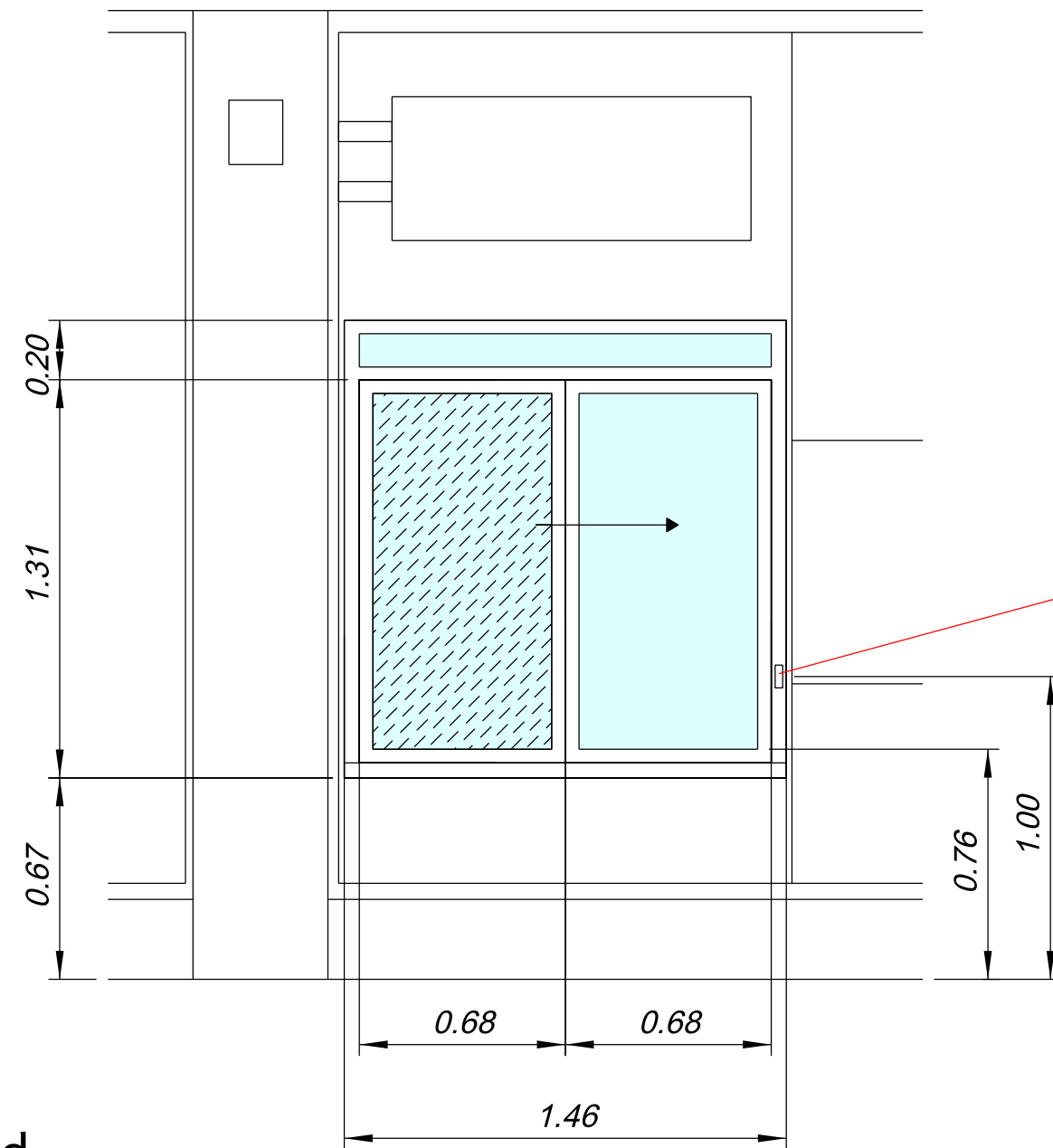


Window hatch
 With Call Bell
 One fixed pane
 One sliding pane
 Width 1.46m
 Height 1.20m

Materials
 Frame Extruded Aluminum to match existing frames
 Colour to match existing frames
 Glass 24.4mm Double glazed toughened glass to match existing



Call bell
 Brass finish

All dimensions in m unless stated

PROJECT	2568
DESCRIPTION	GOODGE STREET METRO
DESCRIPTION	PROPOSED WINDOW HATCH DETAILS
DRAWING NO.	Drawing6A
ISSUE	
SCALE	DATE
NTS	01.12.2014
COMPANY	i2c Ltd
DRAWN	Ashton Miles
 TESCO STORE PLANNING	
TESCO STORES LIMITED STORE PLANNING DEPARTMENT PROPERTY SERVICES P.O. BOX 400, CIRRUS BUILDING, SHIRE PARK WELWYN GARDEN CITY, HERTS. AL7 1GA TELEPHONE : 01707 395150 <small>THE COPYRIGHT AND ALL OTHER RIGHTS IN AND RELATING TO THIS PUBLICATION BELONG TO AND ARE THE SOLE PROPERTY OF TESCO STORES LIMITED. ALL RIGHTS ARE RESERVED. NEITHER THE WHOLE NOR ANY PART OF THIS PUBLICATION MAY BE REPRODUCED OR TRANSMITTED IN ANY FORM OR BY ANY ELECTRONIC OR MECHANICAL MEANS INCLUDING PHOTOCOPYING AND RECORDING OR FROM ANY RETRIEVAL SYSTEM WITHOUT THE PRIOR WRITTEN LICENCE FROM THE OWNER. © 1997 TESCO STORES LIMITED</small>	