

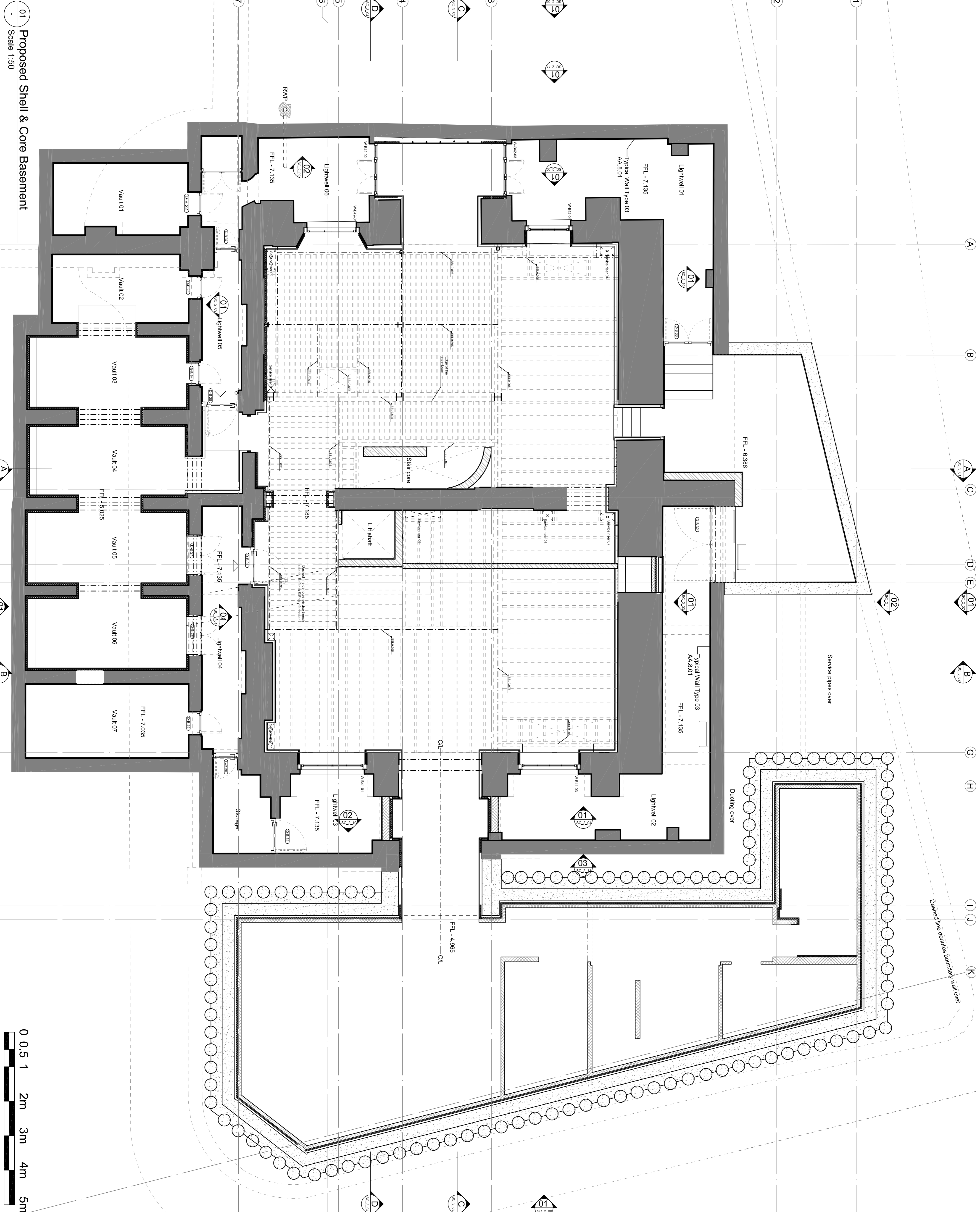
General Notes:

1. No dimensions are to be scaled from this drawing. All dimensions are to be taken from the dimension lines.
2. All dimensions are to be checked on site prior to fabrication & construction.
3. All dimensions are to be checked on site prior to fabrication & construction.

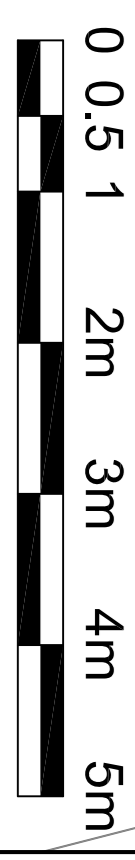
Drawings are to be read in conjunction with all planning and listed building consents, the Crown Estate Guidelines and Standard Specification, Basement Guidelines and Crown Licence agreement.

The new steel work, timber joists and concrete floor will be revised once information co-ordinated with SE and the final position, TBC

Drainage not shown. To be added once information co-ordinated with SE and MIE



01 Proposed Shell & Core Basement
Scale 1:50



Revision	Date	Comment
A	28/10/14	For construction
B	03/11/14	For information
C	14/11/14	For construction

MMM architects Ltd

The Bankers Hall, 24 Meade Vale, London, W9 1RS
E post@mmarchitects.com, www.mmarchitects.com

Construction

address: 41-42 CHESTER TERRACE 421
job no.:

title: PROPOSED SHELL & CORE BASEMENT
scale: 1:50@A1

dwg no.: SC_1_01
revision: C

Outer Circle

Cumberland Place

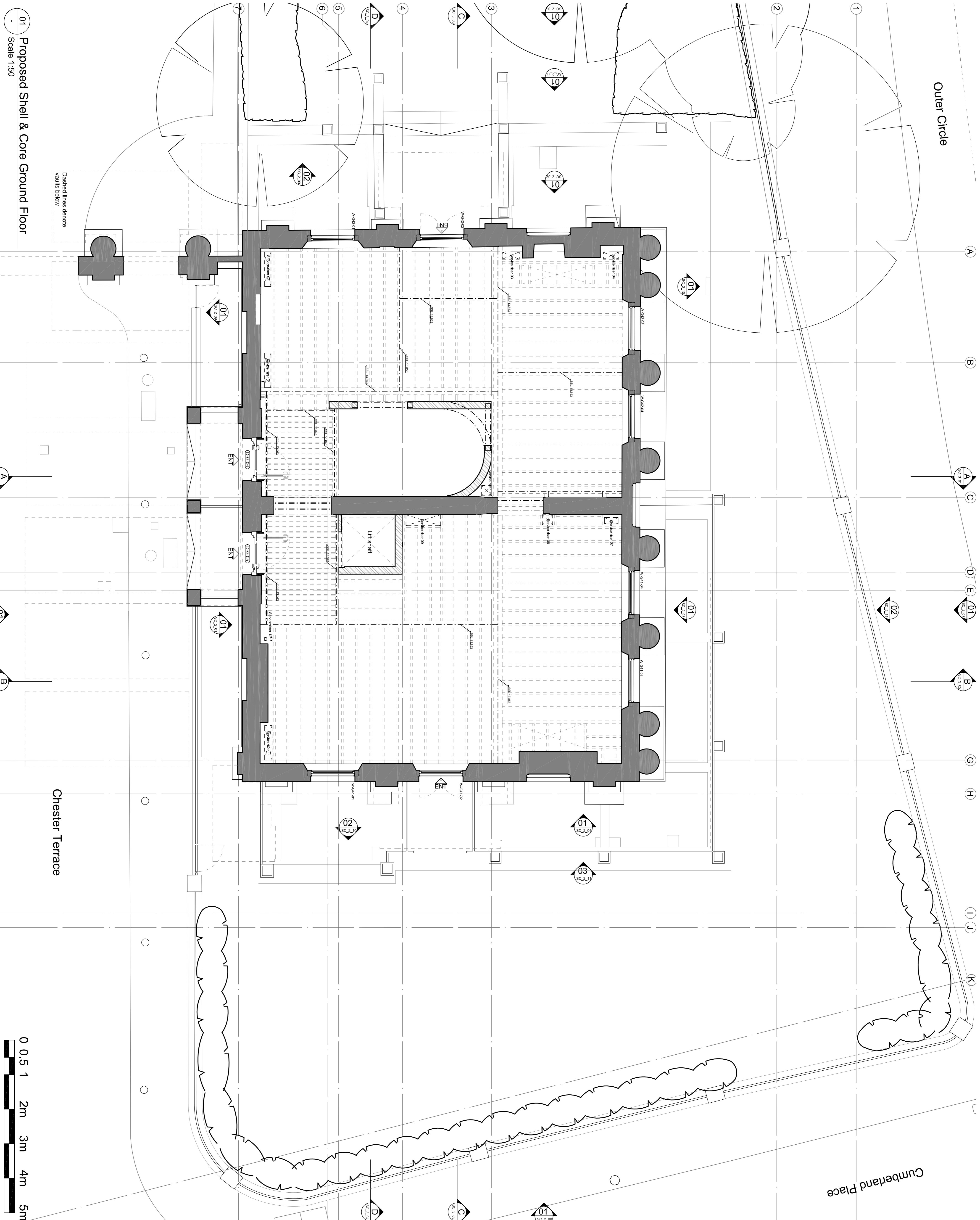
General Notes:

1. No dimensions are to be scaled from this drawing. All dimensions are to be reported to Architect immediately.
2. All dimensions are to be checked on site prior to fabrication & construction.
3. All dimensions are to be checked on site prior to design in specialist's contract only. Detail & fabrication design in specialist's contract. Refer to design portion & specification.

Drawings are to be read in conjunction with all planning and listed building consents, the Crown Estate Guidelines and Standard Specification, Basement Guidelines and Crown Licence agreement.

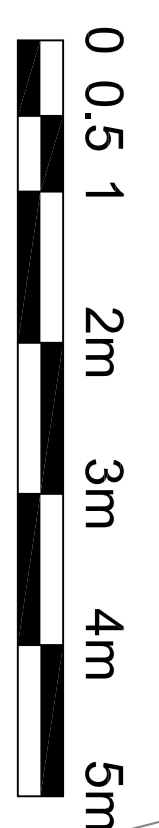
The new steel work, timber joists and concrete floor will be revised once information co-ordinated with SE and the final position TBC

Drainage not shown. To be coordinated with SE and ME



01 Proposed Shell & Core Ground Floor
Scale 1:50

Chester Terrace



Revision	Date	Comment
A	23/10/14	For construction
B	03/11/14	For information
C	14/11/14	For construction

MMM architects Ltd

The Bankers Hall, 24 Meade Vale, London, W9 1RS
E post@mmarchitects.com, www.mmarchitects.com

Construction

address: 41-42 CHESTER TERRACE
job no.:
title: PROPOSED SHELL & CORE GROUND FLOOR
scale: 1:50@A1

dwg no.: SC_1_02
revision: C

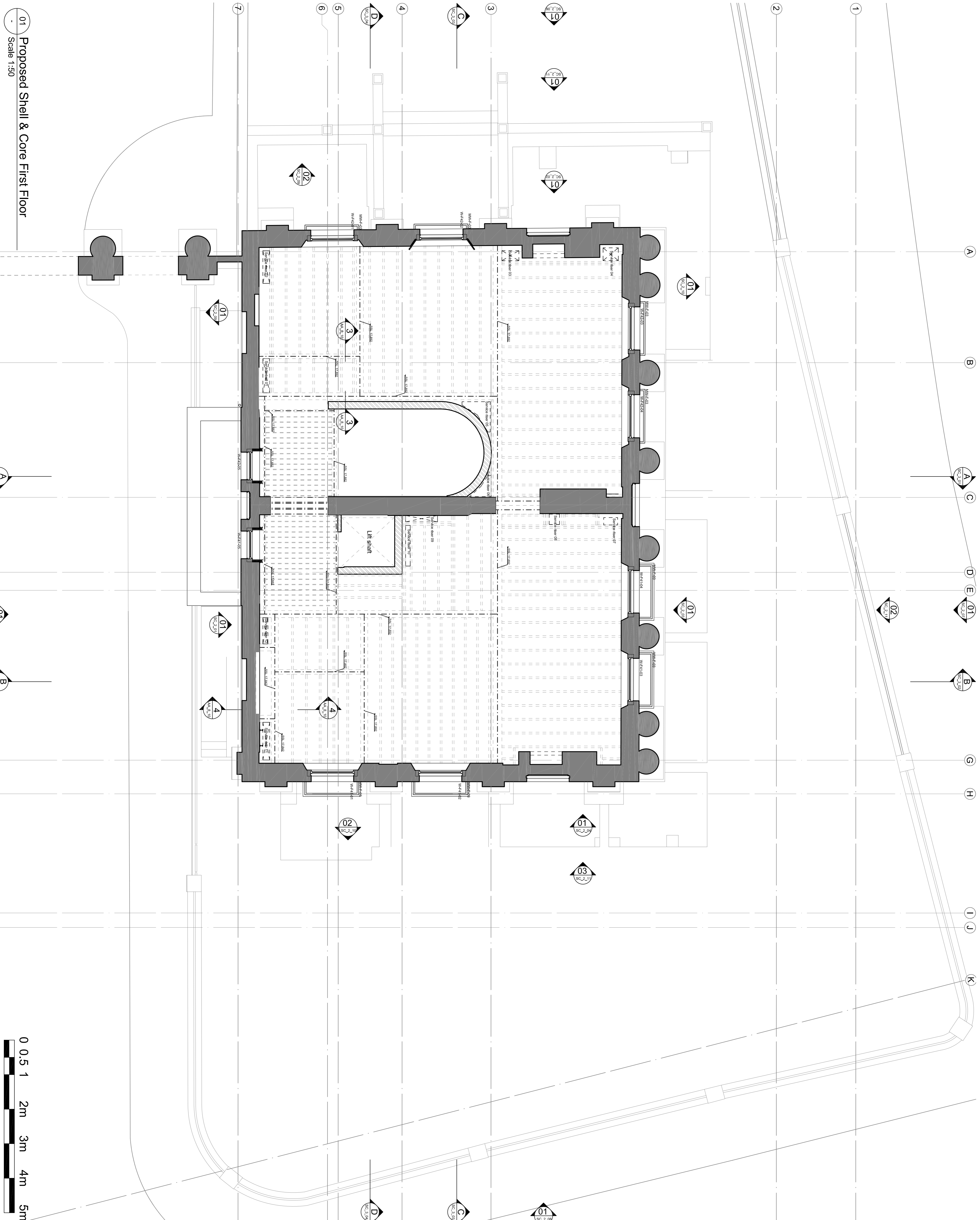
General Notes:

1. No dimensions are to be scaled from this drawing.
2. All dimensions are to be reported to Architect immediately.
3. All dimensions are to be checked on site prior to fabrication & construction.
4. All dimensions are to be checked on site prior to fabrication & construction.
5. All dimensions are to be checked on site prior to fabrication & construction.
6. All dimensions are to be checked on site prior to fabrication & construction.
7. All dimensions are to be checked on site prior to fabrication & construction.
8. All dimensions are to be checked on site prior to fabrication & construction.
9. All dimensions are to be checked on site prior to fabrication & construction.
10. All dimensions are to be checked on site prior to fabrication & construction.

Drawings are to be read in conjunction with all planning and listed building consents, the Crown Estate Guidelines and Standard Specification, Basement Guidelines and Crown Licence agreement.

The new steel work, timber joists and concrete floor will be installed in accordance with the information on SE and the final position TBC

Drainage not shown. To be added once information co-ordinated with SE and MIE



A B C D E F G H I J K

1

2

3

4

5

6

7

01

02

03

04

05

06

07

08

09

10

11

12

13

14

15

16

17

18

19

20

21

22

23

24

25

26

27

28

29

30

31

32

33

34

35

36

37

38

39

40

41

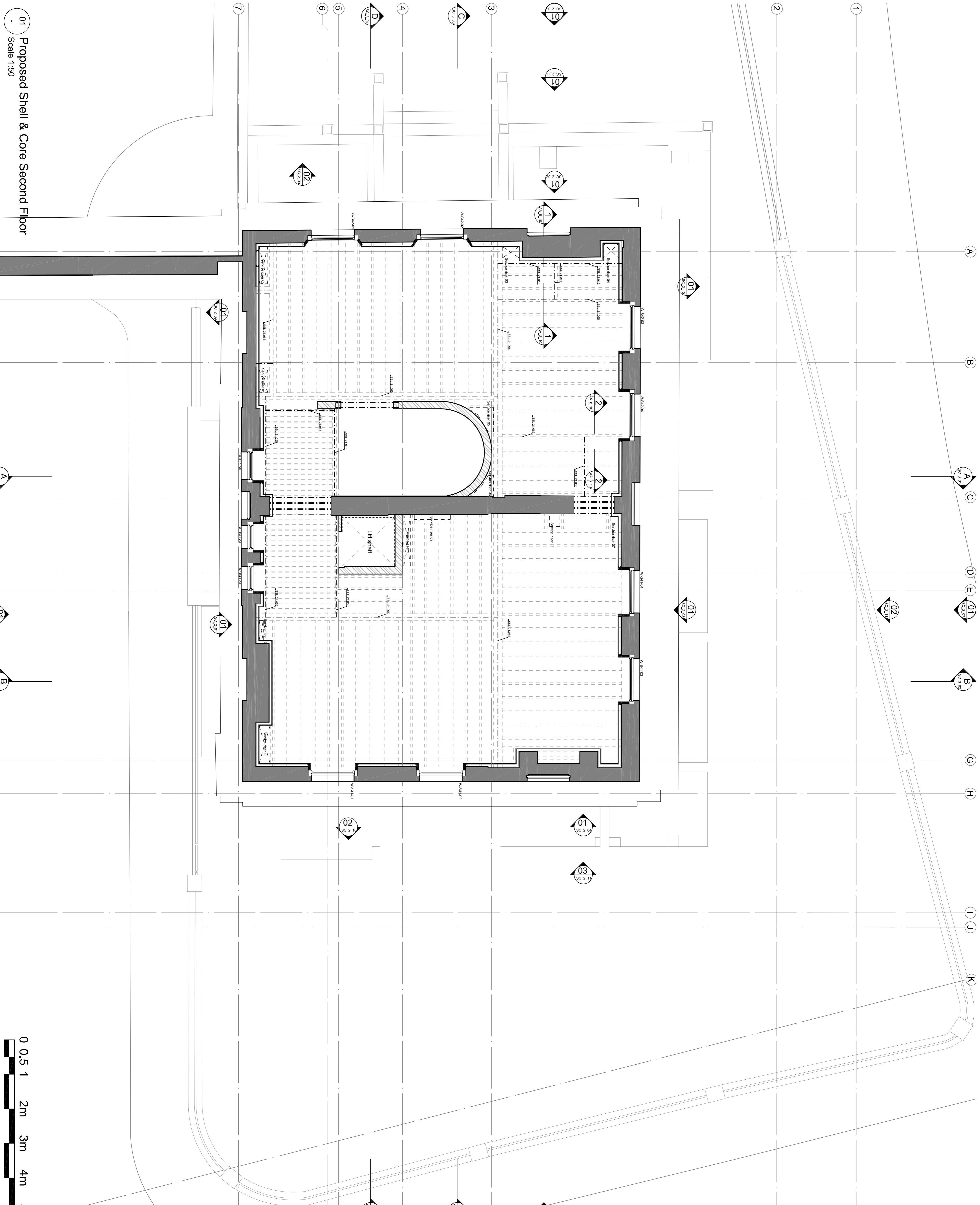
42

General Notes:
 1. No dimensions are to be scaled from this drawing.
 2. All dimensions are to be checked on site prior to fabrication & construction.
 3. All dimensions are to be checked on site prior to fabrication & construction.
 4. All dimensions are to be checked on site prior to fabrication & construction.
 5. All dimensions are to be checked on site prior to fabrication & construction.
 6. All dimensions are to be checked on site prior to fabrication & construction.
 7. All dimensions are to be checked on site prior to fabrication & construction.
 8. All dimensions are to be checked on site prior to fabrication & construction.
 9. All dimensions are to be checked on site prior to fabrication & construction.
 10. All dimensions are to be checked on site prior to fabrication & construction.
 11. All dimensions are to be checked on site prior to fabrication & construction.
 12. All dimensions are to be checked on site prior to fabrication & construction.
 13. All dimensions are to be checked on site prior to fabrication & construction.
 14. All dimensions are to be checked on site prior to fabrication & construction.
 15. All dimensions are to be checked on site prior to fabrication & construction.
 16. All dimensions are to be checked on site prior to fabrication & construction.
 17. All dimensions are to be checked on site prior to fabrication & construction.
 18. All dimensions are to be checked on site prior to fabrication & construction.
 19. All dimensions are to be checked on site prior to fabrication & construction.
 20. All dimensions are to be checked on site prior to fabrication & construction.
 21. All dimensions are to be checked on site prior to fabrication & construction.
 22. All dimensions are to be checked on site prior to fabrication & construction.
 23. All dimensions are to be checked on site prior to fabrication & construction.
 24. All dimensions are to be checked on site prior to fabrication & construction.
 25. All dimensions are to be checked on site prior to fabrication & construction.
 26. All dimensions are to be checked on site prior to fabrication & construction.
 27. All dimensions are to be checked on site prior to fabrication & construction.
 28. All dimensions are to be checked on site prior to fabrication & construction.
 29. All dimensions are to be checked on site prior to fabrication & construction.
 30. All dimensions are to be checked on site prior to fabrication & construction.
 31. All dimensions are to be checked on site prior to fabrication & construction.
 32. All dimensions are to be checked on site prior to fabrication & construction.
 33. All dimensions are to be checked on site prior to fabrication & construction.
 34. All dimensions are to be checked on site prior to fabrication & construction.
 35. All dimensions are to be checked on site prior to fabrication & construction.
 36. All dimensions are to be checked on site prior to fabrication & construction.
 37. All dimensions are to be checked on site prior to fabrication & construction.
 38. All dimensions are to be checked on site prior to fabrication & construction.
 39. All dimensions are to be checked on site prior to fabrication & construction.
 40. All dimensions are to be checked on site prior to fabrication & construction.
 41. All dimensions are to be checked on site prior to fabrication & construction.
 42. All dimensions are to be checked on site prior to fabrication & construction.

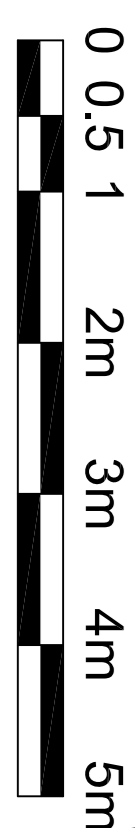
Drawings are to be read in conjunction with all planning and listed building consents, the Crown Estate Guidelines and Standard Specification, Basement Guidelines and Crown Licence agreement.

The new steel work, timber joists and concrete floor will be installed once the ground has been excavated to the final position. TBC

Drainage not shown. To be added once information co-ordinated with SE and ME



01 Proposed Shell & Core Second Floor
 Scale 1:50



Revision	Date	Comment
A	28/10/14	For construction
B	03/11/14	For information
C	14/11/14	For construction

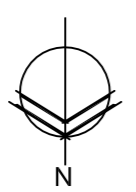
MMM architects Ltd

The Bankers Hall, 24 Meade Vale, London, W9 1RS
 E post@mmarchitects.com, www.mmarchitects.com

Construction

address: 41-42 CHESTER TERRACE
 job no.:
 title: PROPOSED SHELL & CORE SECOND FLOOR
 scale: 1:50
 revision: C

dwg no.: SC_1_04
 revision: C



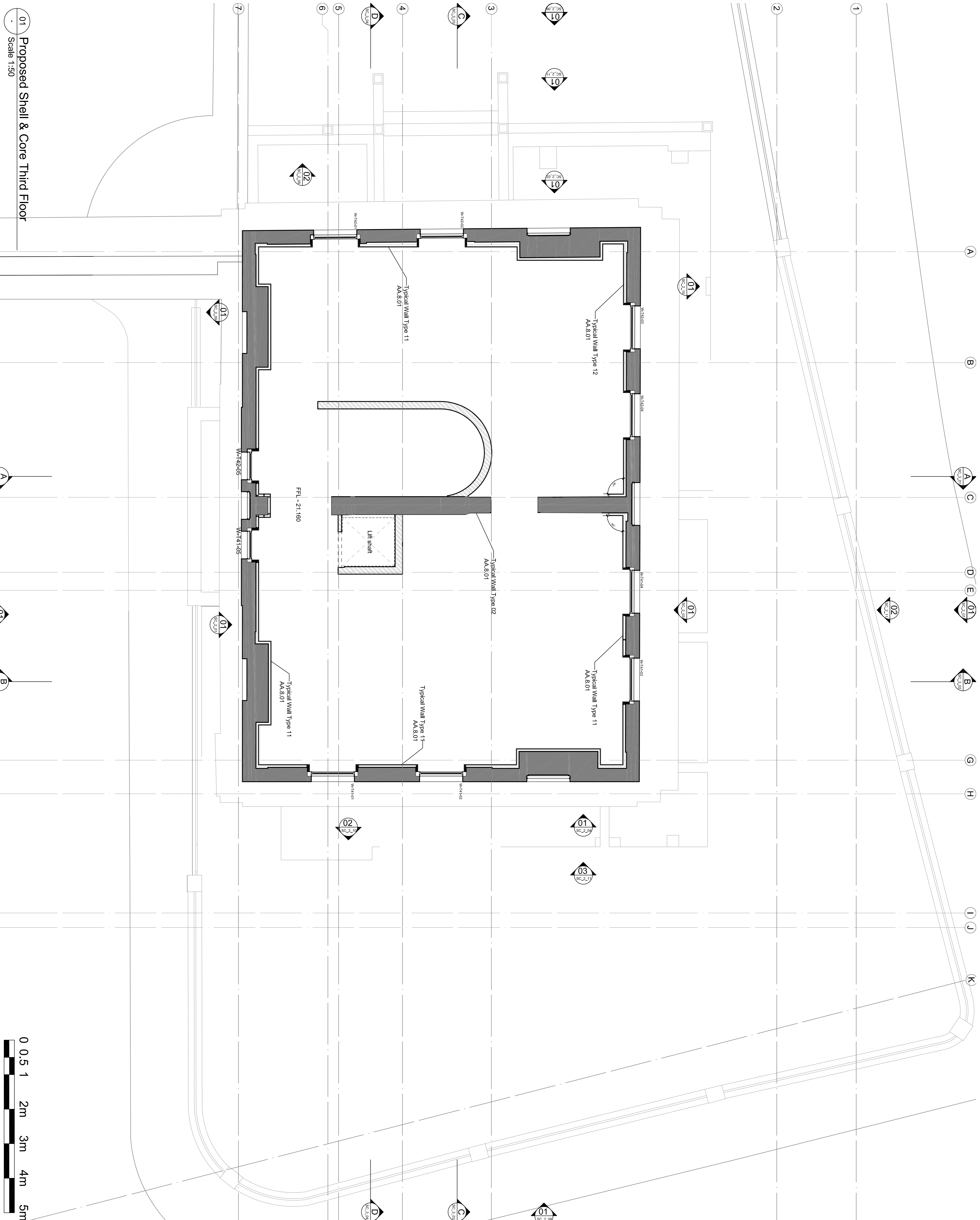
General Notes:

1. No dimensions are to be scaled from this drawing.
2. All dimensions are to be checked on site prior to fabrication & construction.
3. All dimensions are to be checked on site prior to fabrication & construction.

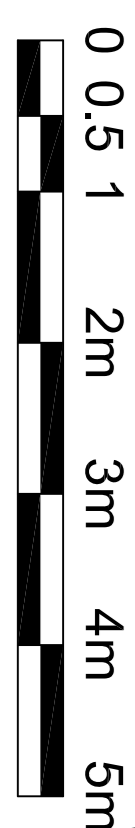
Drawings are to be read in conjunction with all planning and listed building consents, the Crown Estate Guidelines and Standard Specification, Basement Guidelines and Crown Licence agreement.

The new steel work, timber joists and concrete floor will be erected and information co-ordinated with SE and the final position TBC

Drainage not shown.
To be added once information co-ordinated with SE and MIE



01 Proposed Shell & Core Third Floor
Scale 1:50



Revision	Date	Comment
A	28/10/14	For construction
B	03/11/14	For information
C	14/11/14	For construction

MMM architects Ltd

The Bankers Hall, 24 Meade Vale, London, W9 1RS
E post@mmmarchitects.com, www.mmmarchitects.com

Construction

address: 41-42 CHESTER TERRACE
job no.: 421

title: PROPOSED SHELL & CORE THIRD FLOOR PLAN
dwg no.: SC_1_05
scale: 1:50@A1
revision: C