

EXISTING SITE
GROSS EXTERNAL AREA
708 sq.m

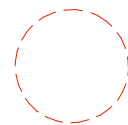


COMMERCIAL DEVELOPMENT

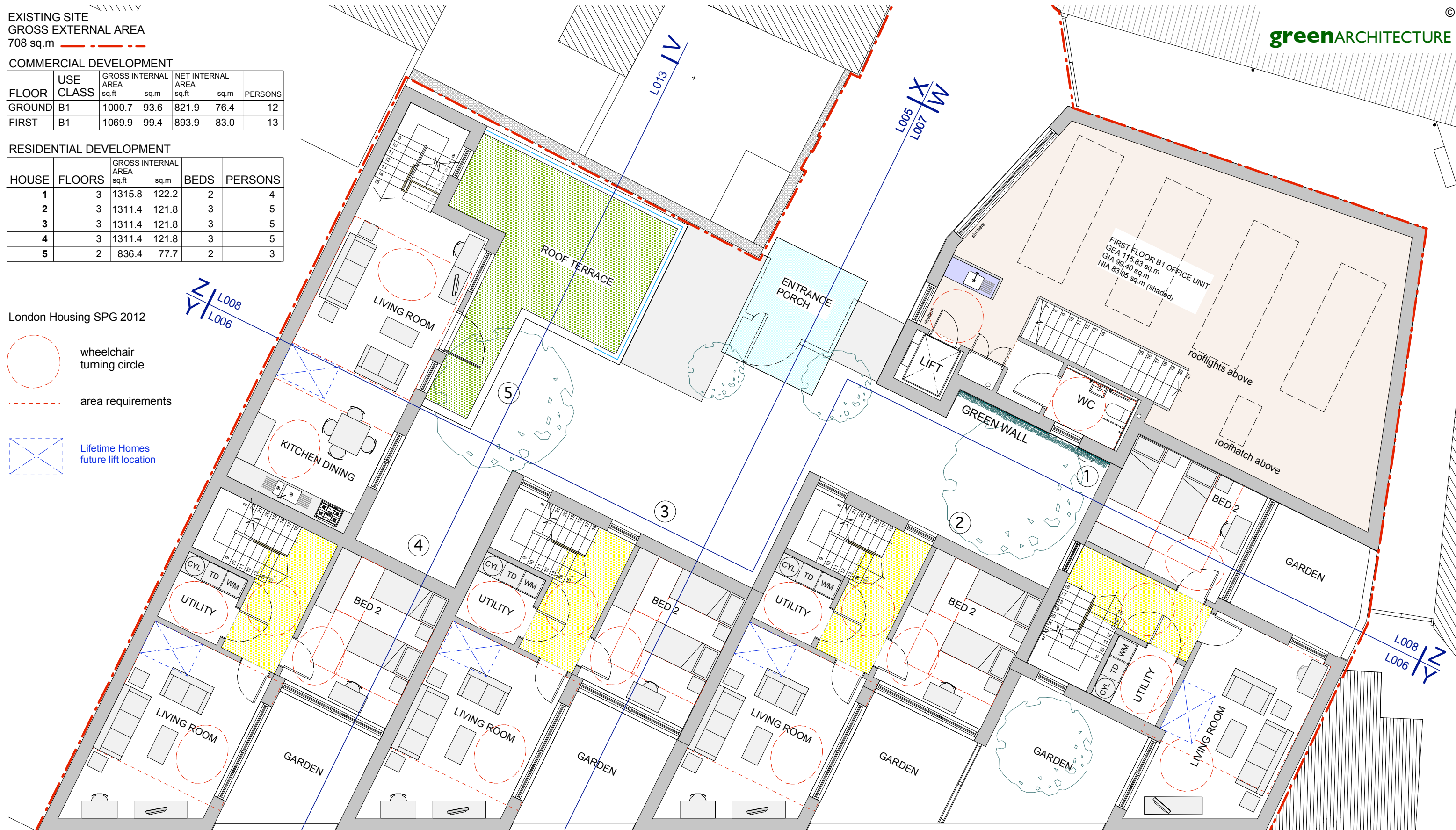
FLOOR	USE CLASS	GROSS INTERNAL AREA		NET INTERNAL AREA		PERSONS
		sq.ft	sq.m	sq.ft	sq.m	
GROUND	B1	1000.7	93.6	821.9	76.4	12
FIRST	B1	1069.9	99.4	893.9	83.0	13

RESIDENTIAL DEVELOPMENT

HOUSE	FLOORS	GROSS INTERNAL AREA		BEDS	PERSONS
		sq.ft	sq.m		
1	3	1315.8	122.2	2	4
2	3	1311.4	121.8	3	5
3	3	1311.4	121.8	3	5
4	3	1311.4	121.8	3	5
5	2	836.4	77.7	2	3

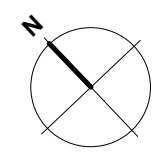
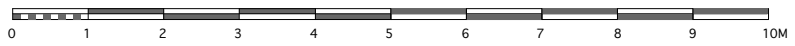
London Housing SPG 2012

-  wheelchair turning circle
-  area requirements
-  Lifetime Homes future lift location



FIRST FLOOR B1 OFFICE UNIT
GEA 115.83 sq.m
GIA 99.40 sq.m
NIA 83.05 sq.m (shaded)

Issue A4: Area schedule revised [19 12 14]
Issue A3: Area schedule revised [13 08 14]
Issue A2: Section line V-V added [06 06 14]



DO NOT SCALE DRAWINGS
VERIFY ALL DIMENSIONS BEFORE COMMENCING WORK
REPORT SUSPECTED DISCREPANCIES OR OMISSIONS

CLIENT JAQUES SAMUEL PIANOS	DRAWN SY	STATUS APPROVALS
JOB 1A HIGHGATE ROAD, LONDON NW5 1JY	DATE 24 02 14	SCALE 1:100 @ A3
DRAWING PROPOSED PLAN: FIRST FLOOR	JOB N° 849	DRAWING N° L002
		ISSUE A4