

EXISTING SITE  
GROSS EXTERNAL AREA  
708 sq.m



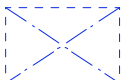
COMMERCIAL DEVELOPMENT

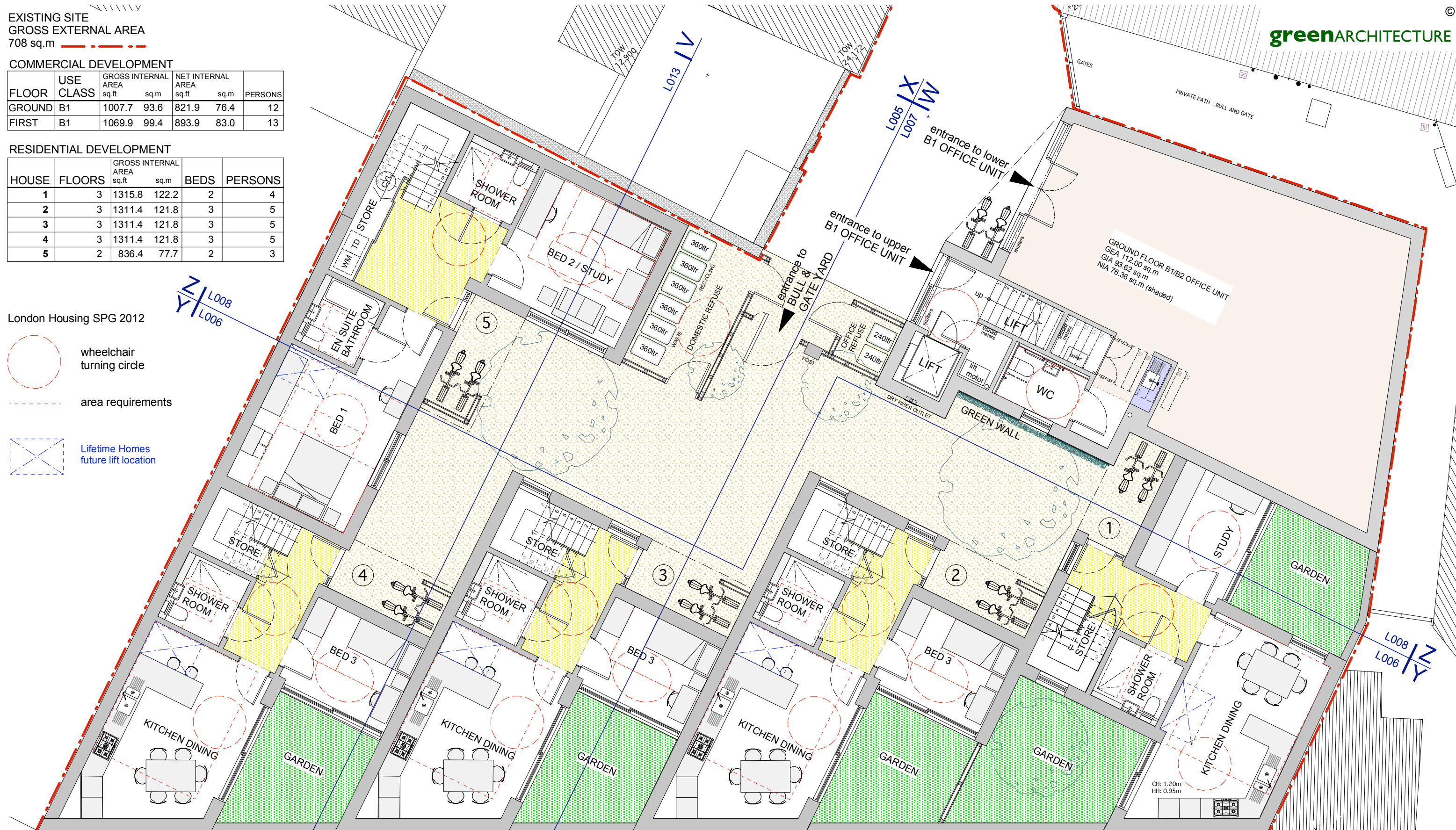
FLOOR	USE CLASS	GROSS INTERNAL AREA sq.ft	GROSS INTERNAL AREA sq.m	NET INTERNAL AREA sq.ft	NET INTERNAL AREA sq.m	PERSONS
GROUND	B1	1007.7	93.6	821.9	76.4	12
FIRST	B1	1069.9	99.4	893.9	83.0	13

RESIDENTIAL DEVELOPMENT

HOUSE	FLOORS	GROSS INTERNAL AREA sq.ft	GROSS INTERNAL AREA sq.m	BEDS	PERSONS
1	3	1315.8	122.2	2	4
2	3	1311.4	121.8	3	5
3	3	1311.4	121.8	3	5
4	3	1311.4	121.8	3	5
5	2	836.4	77.7	2	3

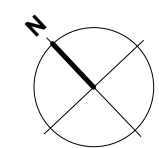
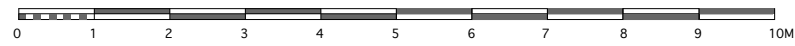
London Housing SPG 2012

-  wheelchair turning circle
-  area requirements
-  Lifetime Homes future lift location



GROUND FLOOR B1/B2 OFFICE UNIT  
GEA 112.00 sq.m  
GIA 93.62 sq.m  
NIA 76.36 sq.m (shaded)

CH: 1.20m  
HH: 0.95m



Issue A4: Area schedule revised [19 12 14]  
Issue A3: Area schedule revised [13 08 14]  
Issue A2: Section line V-V added [06 06 14]

CLIENT JAQUES SAMUEL PIANOS	DRAWN SY	STATUS APPROVALS
JOB 1A HIGHGATE ROAD, LONDON NW5 1JY	DATE 24 02 14	SCALE 1:100 @ A3
DRAWING <b>PROPOSED PLAN: GROUND FLOOR</b>	JOB N° <b>849</b>	DRAWING N° <b>L001</b>
		ISSUE <b>A4</b>

METAL RAILINGS AND FENCE  
TREES (OUTSIDE DEVELOPMENT SITE)  
DO NOT SCALE DRAWINGS  
VERIFY ALL DIMENSIONS BEFORE COMMENCING WORK  
REPORT SUSPECTED DISCREPANCIES OR OMISSIONS