

- 1) Drawing and design Copyright.
- 2) Figured dimensions only are to be used.
- 3) All dimensions to be checked on site, differences between drawings and specification or bills of quantities to be referred to OPTIMA B.E.S. Ltd.

ELECTRICAL SERVICES NOTES
 E1) This drawing indicate the extent of the services to be relocated on the existing front facade & gable walls. The objective is to achieve a distribution solution to remove the Mechanical & Electrical services from the facade of Building B, front & rear. The contractors shall sequence the works to limit the disruption to the retail units. Drawing AP297-E-200-T, indicates the proposed containment system & locations of landlords distribution cupboards. These shall be installed before the existing services are isolated and relocated.

RELATED DRAWINGS & SPECIFICATIONS SCHEDULE (AT TIME OF ISSUE)

OPTIMA	AP297-E-50-T	BLOCK A-ELECTRICAL SERVICES SCHEMATIC
OPTIMA	AP297-E-100-T	BLOCK A-EXISTING SERVICES FRONT ELEVATION
OPTIMA	AP297-E-200-T	BLOCK A-SERVICES ELECTRICAL GROUND, FIRST & SECOND
OPTIMA	AP297-M-201-T	BLOCK A-SERVICES MECHANICAL GROUND, FIRST & SECOND
OPTIMA	AP297-E-300-T	BLOCK A-SERVICES FRONT & REAR ELEVATION
OPTIMA	AP297-JULY 2014	BLOCK A-MECHANICAL & ELECTRICAL SPECIFICATION

SATELLITE DISH & LIGHT AND CCTV TO BE REMOVED IN AGREEMENT WITH THE ARCHITECTS APPROVAL



ARMORED CABLE FROM BLOCK C TO BLOCK A TO BE RELOCATED UNDER BUILDING C WORKS



LV AND ELV CABLE RUN TO HIGH LEVEL



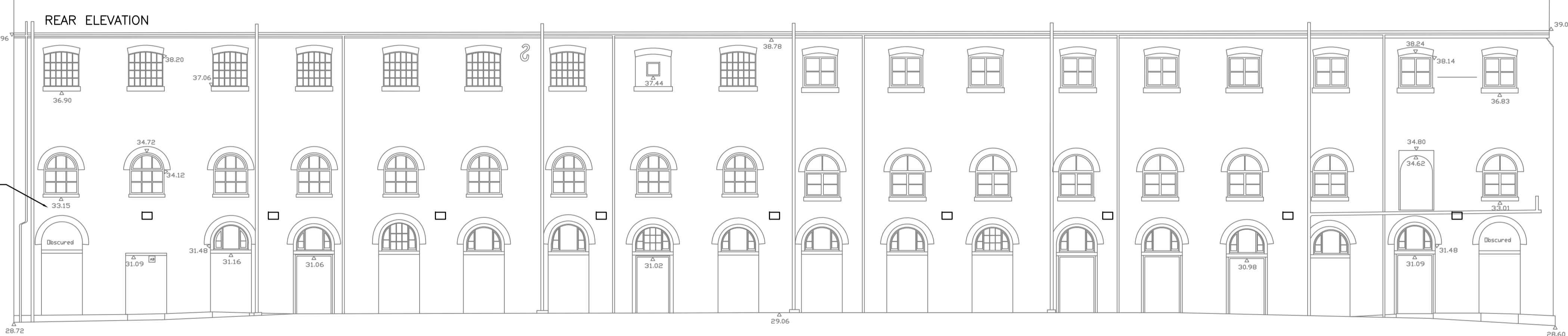
CLIENTS OWN CCTV



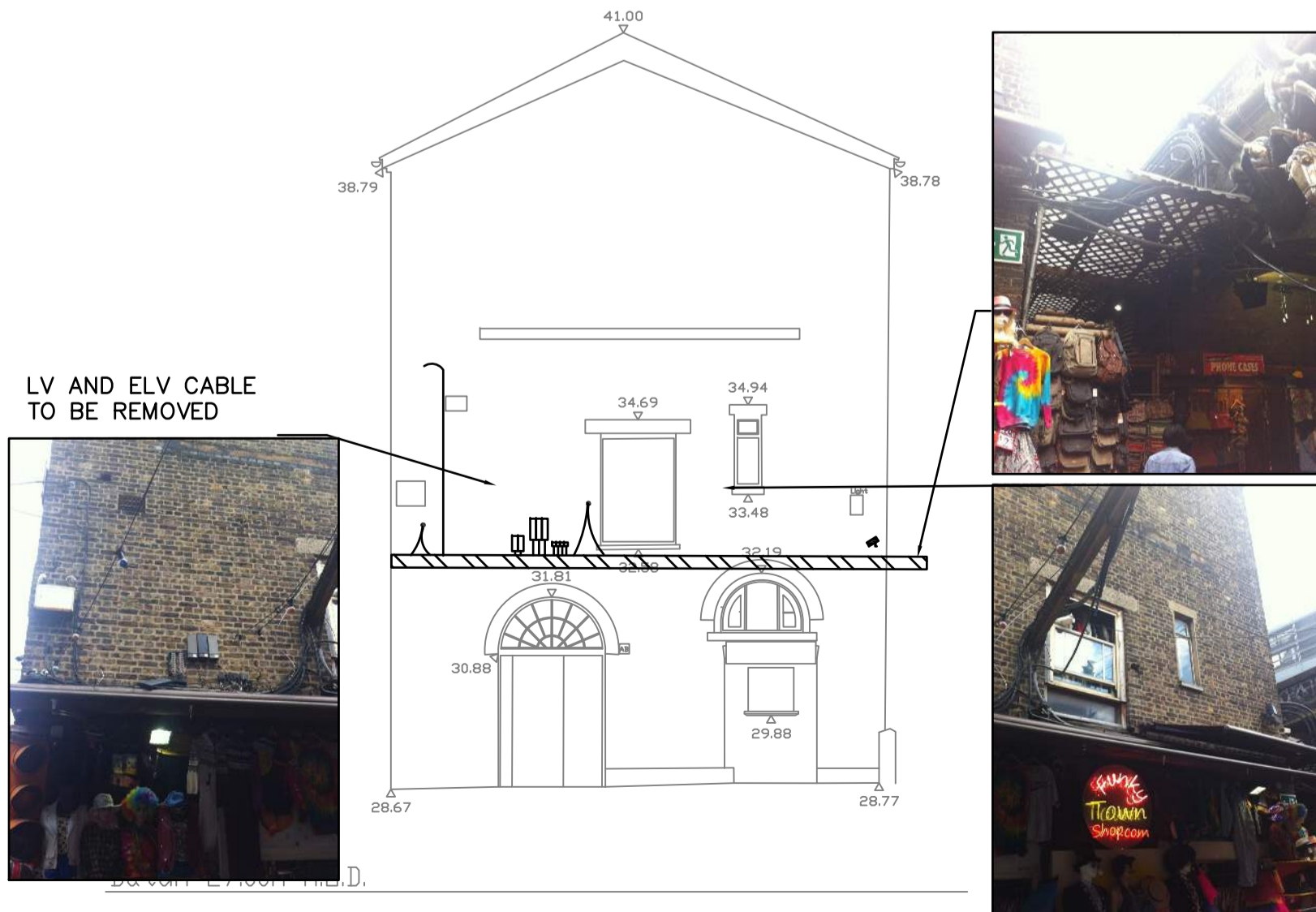
LV AND ELV CABLE TO BE REMOVED | LV AND ELV CABLE & UNDER CANOPY LIGHTS TO BE REMOVED | LV AND ELV CABLE & UNDER CANOPY LIGHTS TO BE REMOVED | LV AND ELV CABLE & UNDER CANOPY LIGHTS TO BE REMOVED | LV AND ELV CABLE & UNDER CANOPY LIGHTS TO BE REMOVED | LV AND ELV CABLE & UNDER CANOPY LIGHTS TO BE REMOVED | LV AND ELV CABLE & UNDER CANOPY LIGHTS TO BE REMOVED | LV AND ELV CABLE TO BE REMOVED | EXISTING SOCKET OUTLET EXACT QUANTITY TBC ON SITE TO BE REMOVED



REAR ELEVATION: LV AND ELV CABLE & UNDER CANOPY LIGHTS ON THE COMPLETE LENGTH OF THE FACADE TO BE REMOVED



T	11-08-14	TENDER PROVISIONAL ISSUE
Rev	Date	Details
Client		
STANLEY SIDINGS		
Project		
CAMDEN STABLES MARKET LONDON		
Drawing		
BUILDING B FRONT AND REAR ELEVATION EXISTING SERVICES SURVEY		
Scale	Date	Drawn
1:100	July 2014	TA
Checked		
DB		
<p>OPTIMA B.E.S. LTD Building Environmental Solutions HIGHCLERE, 34 ABBOTS ROAD ABBOTS LANGLEY, HERTS, WD5 0AZ TEL: 01923 267107 FAX: 01923 270223 E-mail: OptimaBES@aol.com</p>		
Job No.	Drawing No.	Revision
AP297	E100	T



LV AND ELV CABLE TO BE REMOVED

LV' ELV AND WATER FROM BLOCK B BLOCK B TO RAILWAY ARCHES



EXISTING LV AND ELV SERVICES ON BRIDGE TO BE INSTALLED ON CALBE BASKET AS PART OF BLOCK D WORKS

WATER PIPES ON ARCHES LINKS TO BLOCK B

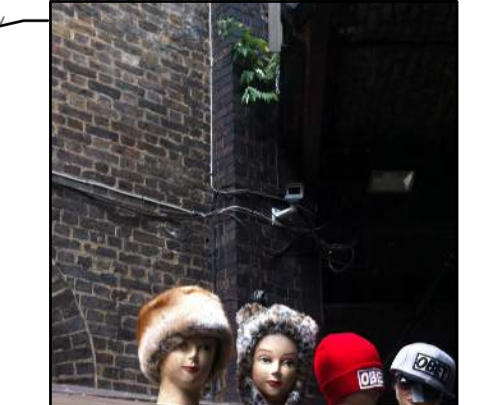
LV AND ELV CABLE TO BE REMOVED



LV & ELV CABLE TO BE REMOVED AND SATELLITE DISH POSITION TBC WITH ARCHITECT



Datum 27.00m A.D.D.



LV & ELV CABLE AND CCTV TO BE REMOVED