

STREET FRONT ELEVATION

REVISIONS  
 REVISION NO. | DATE | DESCRIPTION  
 1 | 03.02.15 | AMENDED FOLLOWING PLANNER'S COMMENTS  
 2 | 19.11.14 | AMENDED FOLLOWING PRE-APPLICATION ADVICE

PROJECT: 400 - 14 HATTON WALL, LONDON, EC1N 8JN  
 DWG. TITLE: STREET FRONT ELEVATION - PROPOSED  
 DWG. NO.: 400\_201B  
 SCALE: 1:200 @A3  
 DATE: 25.07.12  
 ISSUE: INFORMATION

400

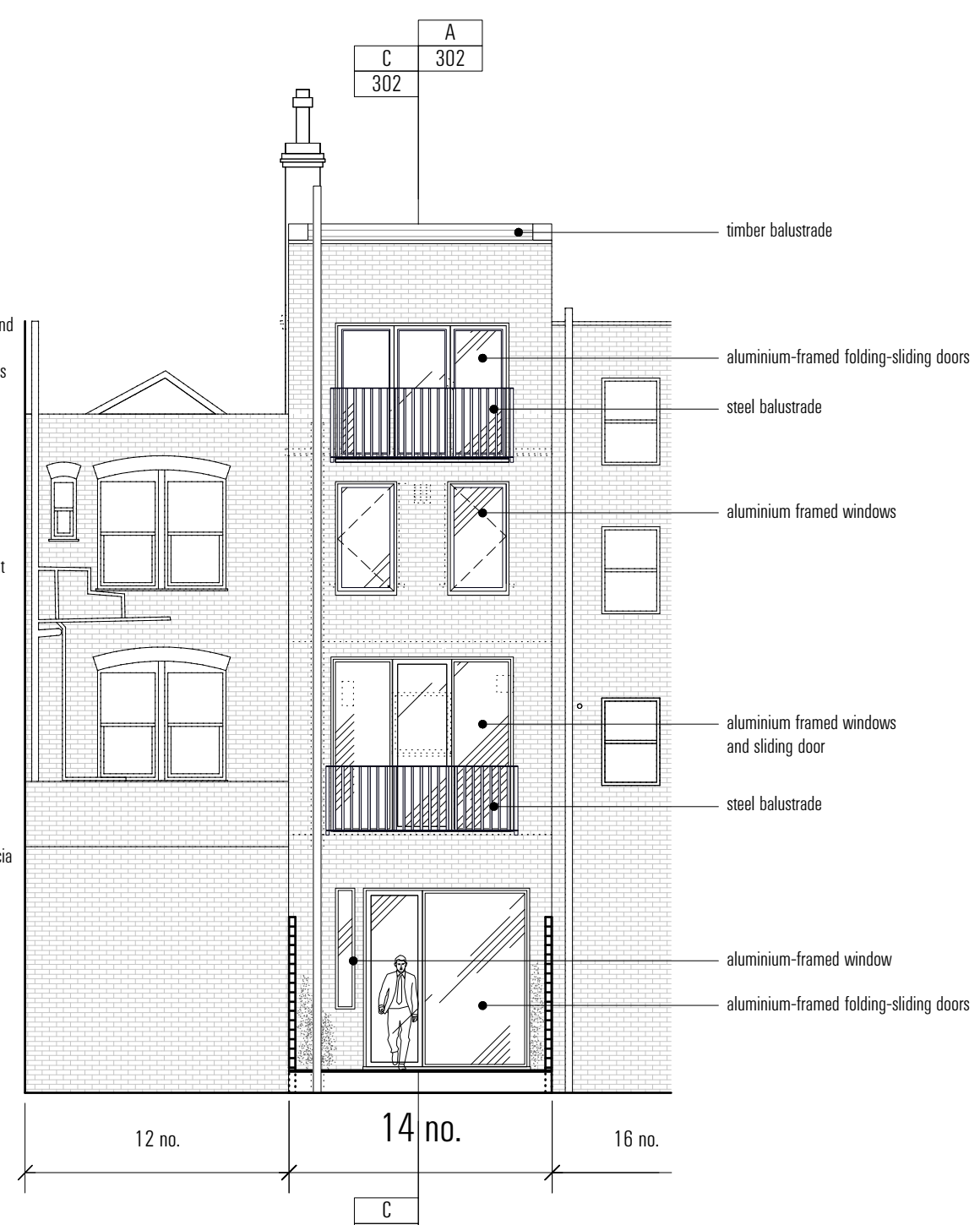
PROPOSED

STREET FRONT ELEVATION

EMULSION  
 6 BAKER'S YARD LONDON EC1R 3DD  
 T: 020 8127 1015 F: 020 8127 1016 E: CONTACT@EMULSIONARCHITECTURE.COM  
 DO NOT SCALE: ALL DIMENSIONS TO BE CHECKED ON SITE. DO NOT REPRODUCE DRAWING: COPYRIGHT EMULSION LTD.



FRONT ELEVATION



REAR ELEVATION

A  
302 C  
302

C  
302 A  
302

REVISIONS  
 REVISION 1: REV B - 03.02.15 AMENDED FOLLOWING PLANNER'S COMMENTS  
 REVISION 2: REV A - 19.11.14 AMENDED FOLLOWING PRE-APPLICATION ADVICE

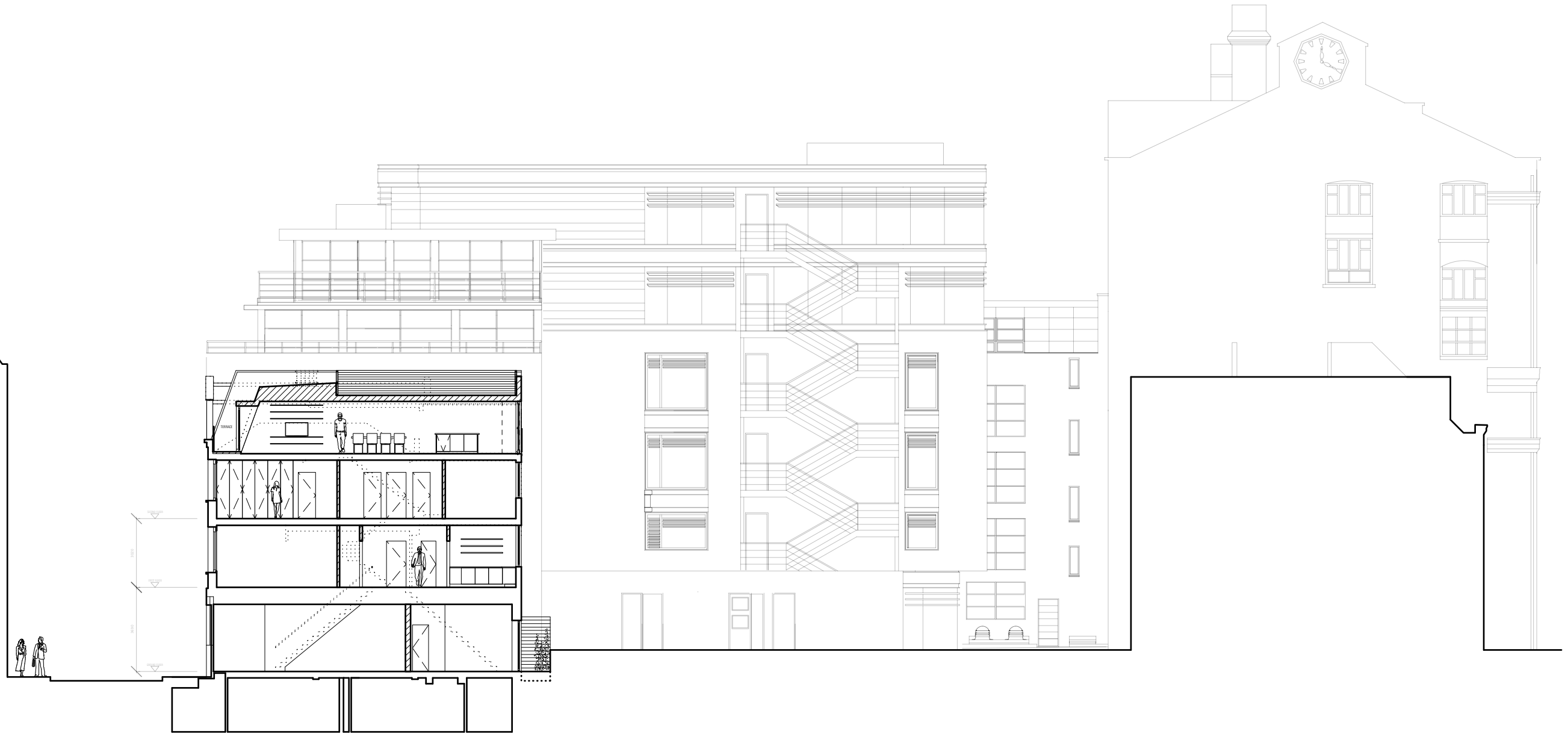
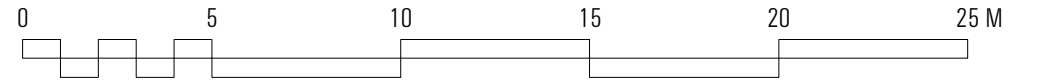
PROJECT: 400 - 14 HATTON WALL, LONDON, EC1N 8JN  
 DWG. TITLE: FRONT AND REAR ELEVATIONS - PROPOSED  
 DWG. NO.: 400\_202B  
 SCALE: 1:100 @A3  
 DATE: 25.07.12  
 ISSUE: INFORMATION

400

PROPOSED

FRONT AND REAR ELEVATIONS

EMULSION  
 6 BAKER'S YARD LONDON EC1R 3DD  
 T: 020 8127 1015 F: 020 8127 1016 E: CONTACT@EMULSIONARCHITECTURE.COM  
 DO NOT SCALE: ALL DIMENSIONS TO BE CHECKED ON SITE. DO NOT REPRODUCE DRAWING: COPYRIGHT EMULSION LTD.



STREET SECTION AA

REVISIONS  
 REVISION 03.02.15 AMENDED FOLLOWING PLANNER'S COMMENTS  
 REVISION 19.11.14 AMENDED FOLLOWING PRE-APPLICATION ADVICE

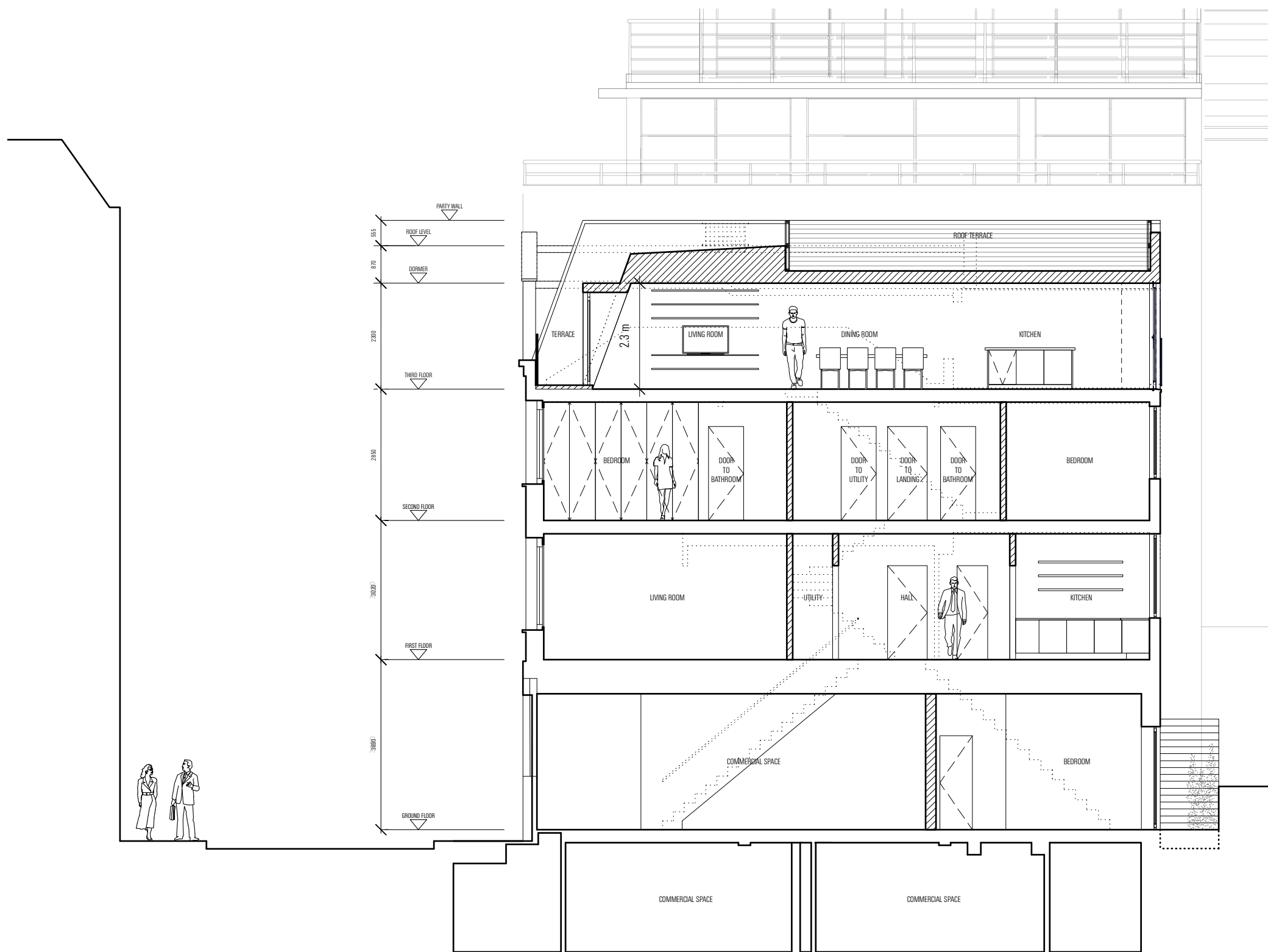
PROJECT: 400 - 14 HATTON WALL, LONDON, EC1N 8JN  
 DWG. TITLE: STREET SECTION AA - PROPOSED  
 DWG. NO.: 400\_301B  
 SCALE: 1:200 @A3  
 DATE: 19.07.12  
 ISSUE: INFORMATION

400

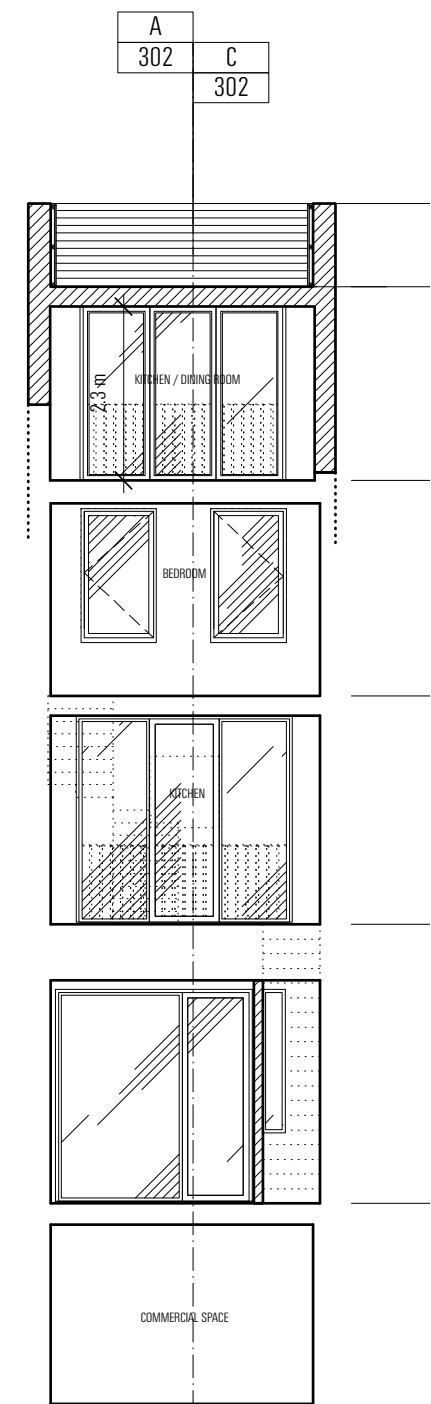
PROPOSED

STREET SECTIONS AA

EMULSION  
 6 BAKER'S YARD LONDON EC1R 3DD  
 T: 020 8127 1015 F: 020 8127 1016 E: CONTACT@EMULSIONARCHITECTURE.COM  
 DO NOT SCALE. ALL DIMENSIONS TO BE CHECKED ON SITE. DO NOT REPRODUCE DRAWING. COPYRIGHT EMULSION LTD.



SECTION AA



SECTION BB

REVISIONS  
 REV B - 03.02.15 AMENDED FOLLOWING PLANNER'S COMMENTS  
 REV A - 19.11.14 AMENDED FOLLOWING PRE-APPLICATION ADVICE

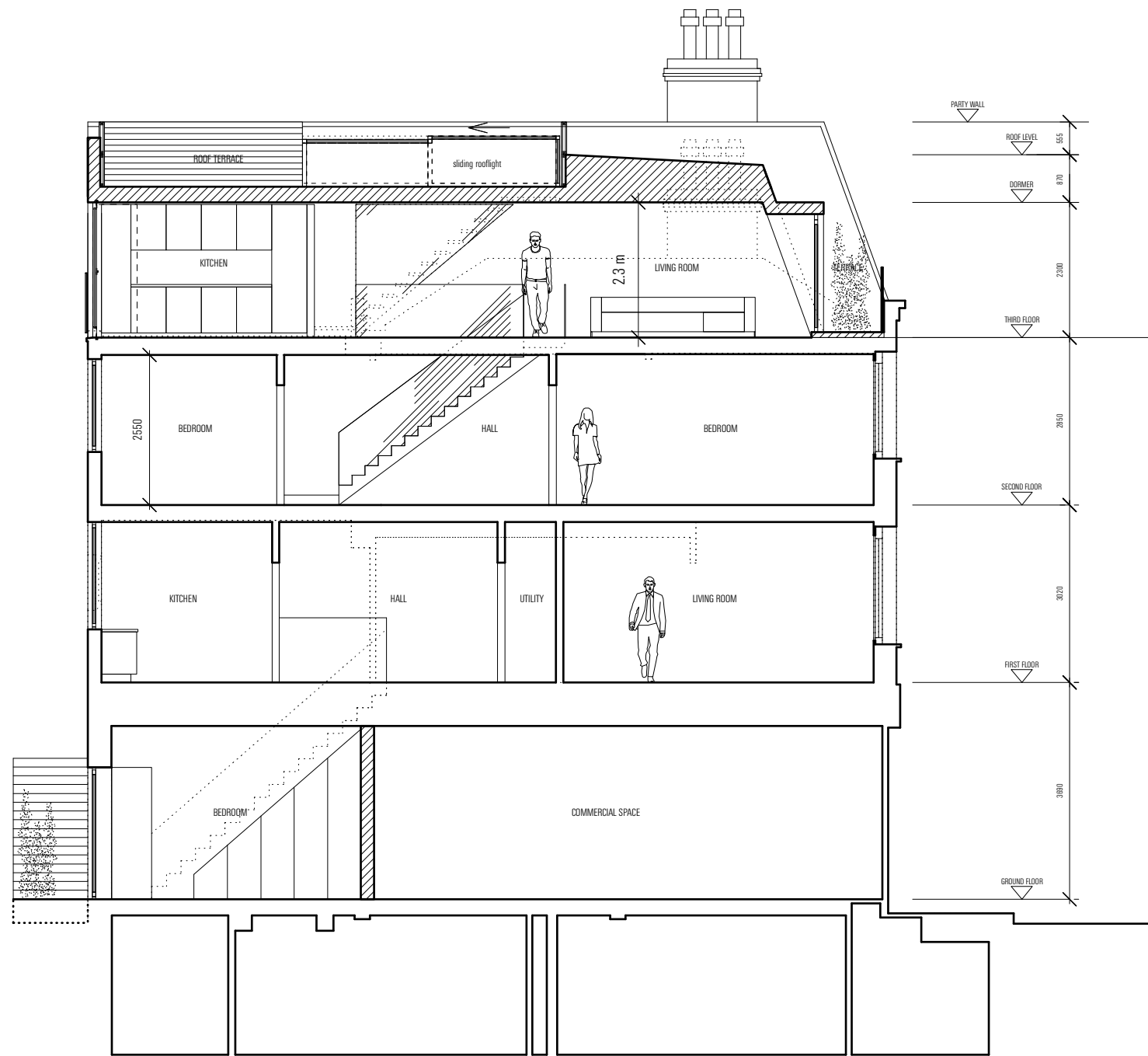
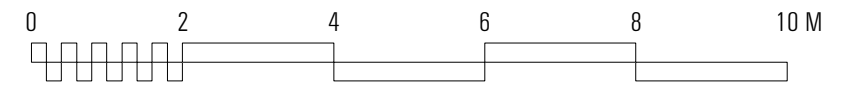
PROJECT: 400 - 14 HATTON WALL, LONDON, EC1N 8JN  
 DWG. TITLE: SECTIONS AA & BB - PROPOSED  
 DWG. NO.: 400\_302B  
 SCALE: 1:100 @A3  
 DATE: 19.07.12  
 ISSUE: INFORMATION

400

PROPOSED

SECTIONS AA & BB

EMULSION  
 6 BAKER'S YARD LONDON EC1R 3DD  
 T: 020 8127 1015 F: 020 8127 1016 E: CONTACT@EMULSIONARCHITECTURE.COM  
 DO NOT SCALE: ALL DIMENSIONS TO BE CHECKED ON SITE. DO NOT REPRODUCE DRAWING: COPYRIGHT EMULSION LTD.



SECTION CC

REVISIONS  
 REV B - 03.02.15 AMENDED FOLLOWING PLANNER'S COMMENTS  
 REV A - 19.11.14 AMENDED FOLLOWING PRE-APPLICATION ADVICE

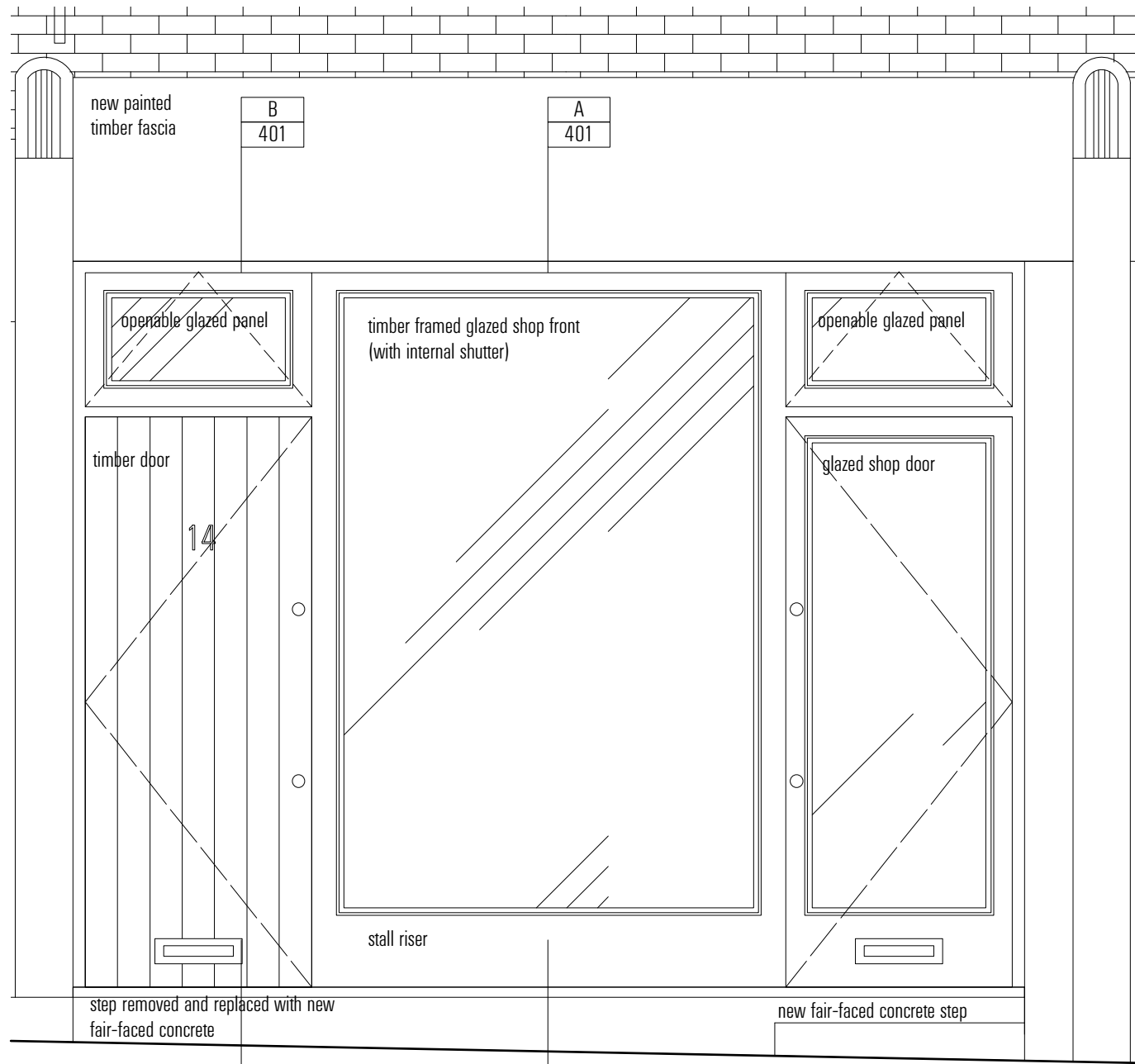
PROJECT: 400 - 14 HATTON WALL, LONDON, EC1N 8JN  
 DWG. TITLE: SECTIONS CC - PROPOSED  
 DWG. NO.: 400\_303B  
 SCALE: 1:100 @A3  
 DATE: 19.07.12  
 ISSUE: INFORMATION

400

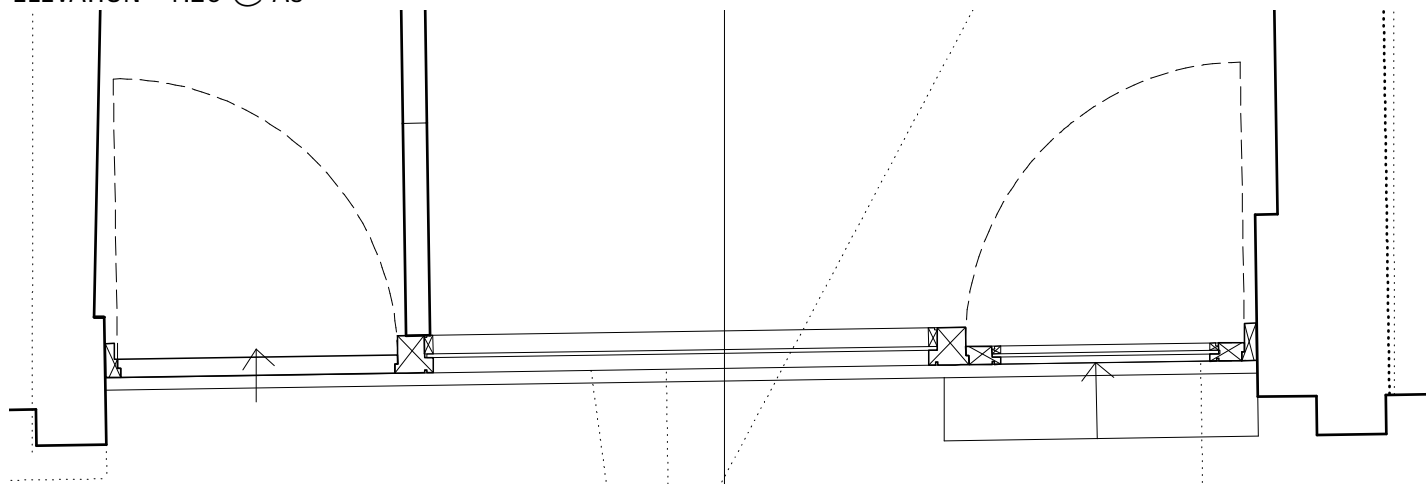
PROPOSED

SECTIONS CC

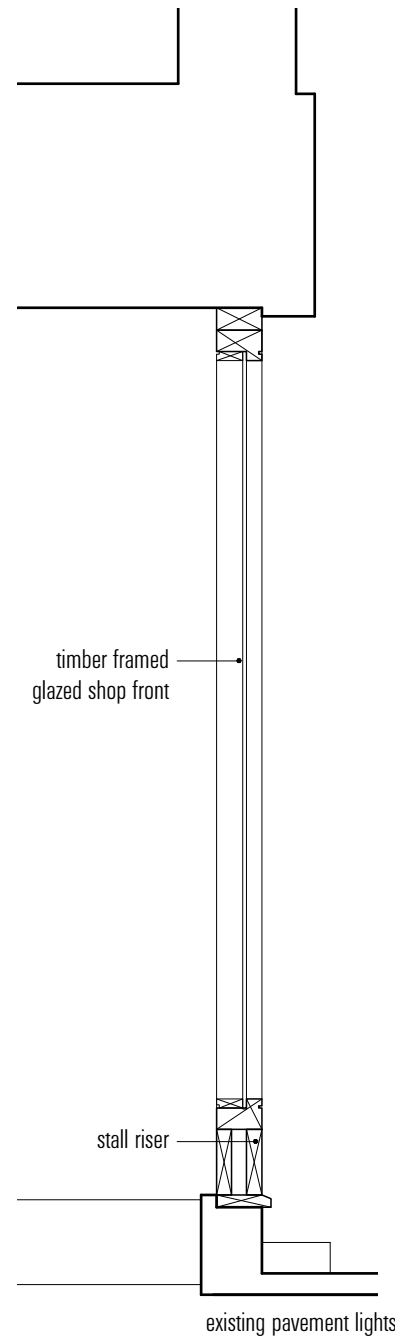
EMULSION  
 6 BAKER'S YARD LONDON EC1R 3DD  
 T: 020 8127 1015 F: 020 8127 1016 E: CONTACT@EMULSIONARCHITECTURE.COM  
 DO NOT SCALE: ALL DIMENSIONS TO BE CHECKED ON SITE. DO NOT REPRODUCE DRAWING: COPYRIGHT EMULSION LTD.



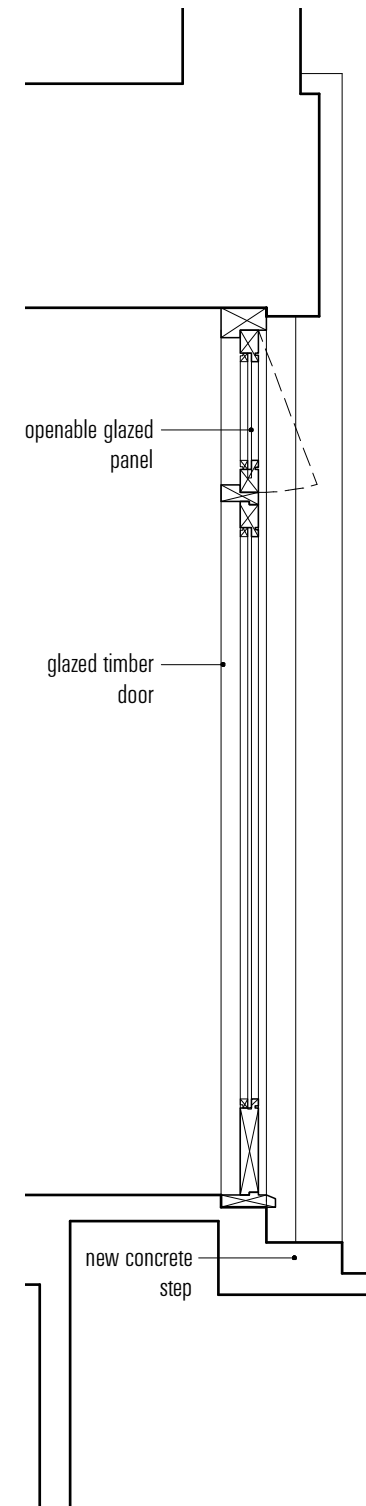
PROPOSED FRONT ELEVATION 1:25 @ A3



PROPOSED ENTRANCE PLAN 1:25 @ A3



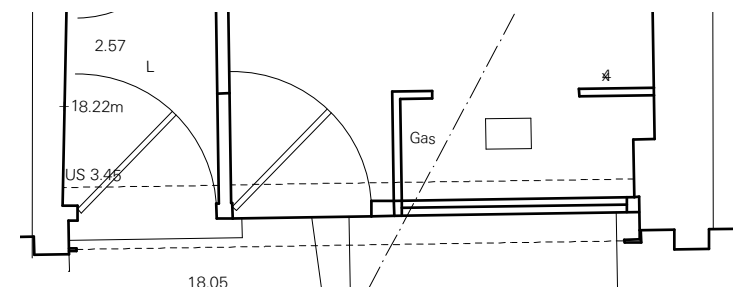
PROPOSED SECTION A 1:25 @ A3



PROPOSED SECTION B 1:25 @ A3



EXISTING FRONT ELEVATION 1:25 @ A3



EXISTING ENTRANCE PLAN 1:50 @ A3

REVISIONS  
 REV A - 03.02.15 AMENDED FOLLOWING PLANNER'S COMMENTS

PROJECT: 400 - 14 HATTON WALL, LONDON, EC1N 8JN  
 DWG. TITLE: SHOPFRONT ELEVATION - EXISTING + PROPOSED  
 DWG. NO.: 400\_401A  
 SCALE: 1:25 / 1:50 @A3  
 DATE: 19.11.14  
 ISSUE: INFORMATION

400

PROPOSED

EMULSION  
 6 BAKER'S YARD LONDON EC1R 3DD  
 T: 020 8127 1015 F: 020 8127 1016 E: CONTACT@EMULSIONARCHITECTURE.COM  
 DO NOT SCALE: ALL DIMENSIONS TO BE CHECKED ON SITE. DO NOT REPRODUCE DRAWING: COPYRIGHT EMULSION LTD.