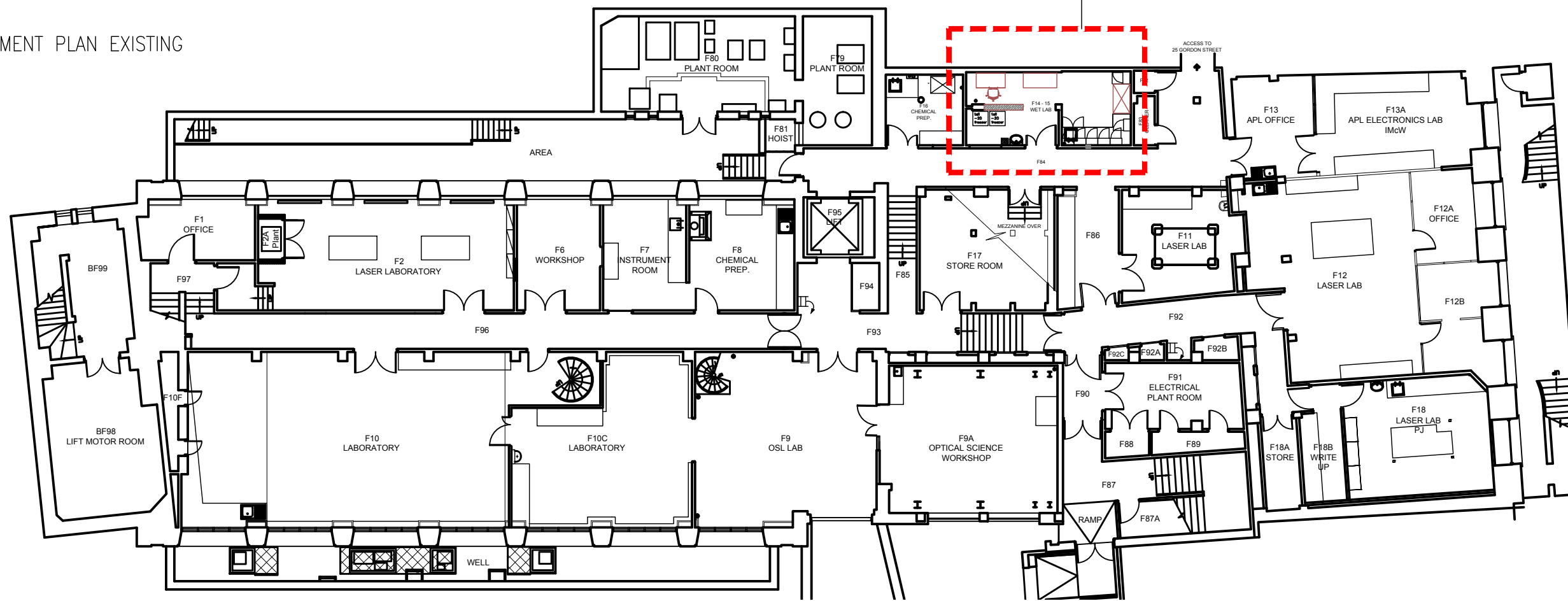


BASEMENT PLAN EXISTING

See drawing L(1-)02 and 03 for details



KEY:



General Area of works confined to this zone



demolition & strip-out
Refer also to Architectural NBS specification C20

WILSON MASON

Wilson Mason LLP - Chartered Architects - www.wilsonmason.co.uk
3 Chandos Street, Cavendish Square, London W1G 9JU T 020 7637 1501

This drawing is to be read in conjunction with all relevant consultants' and specialists' drawings.
Notify the Contract Administrator of any discrepancies before proceeding.
Do not scale from this drawing. All dimensions are to be checked on site. This drawing is subject to copyright.

client	project
University College London	Physics Refurbishment

drawing Existing Basement Floor Plan

1:200 at A3

rev

Stage A/B 5923 - TP-L(1-)01

-