

7 Cambridge Gate
Design Documents to Support Discharge of Condition 05
Issue Date: 11.02.2015

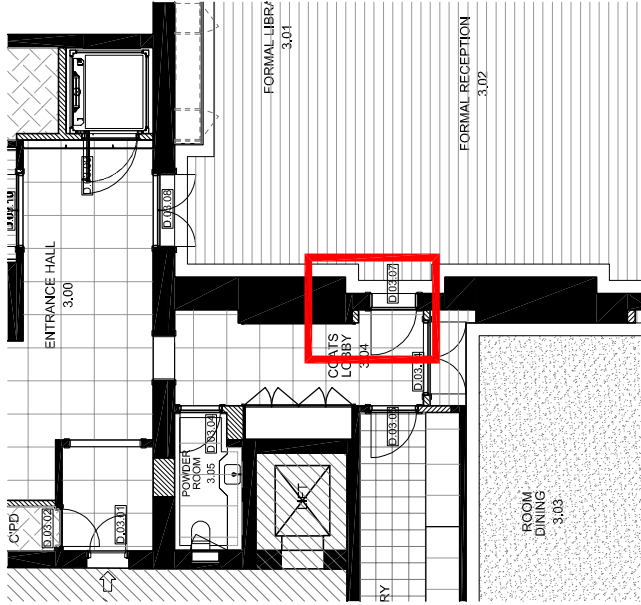
7 Cambridge Gate
Design Documents for Condition 05 a)
Issue Date: 11.02.2015

NEW DOORWAY TO RECEPTION

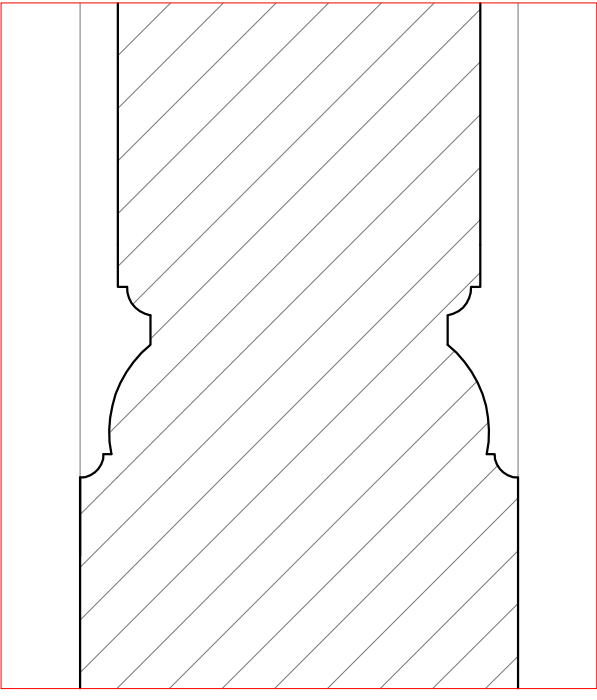
REV	BY	DATE	DESCRIPTION

PROJECT CODE:
PROJECT TITLE:
Flat 4, 7 Cambridge Gate

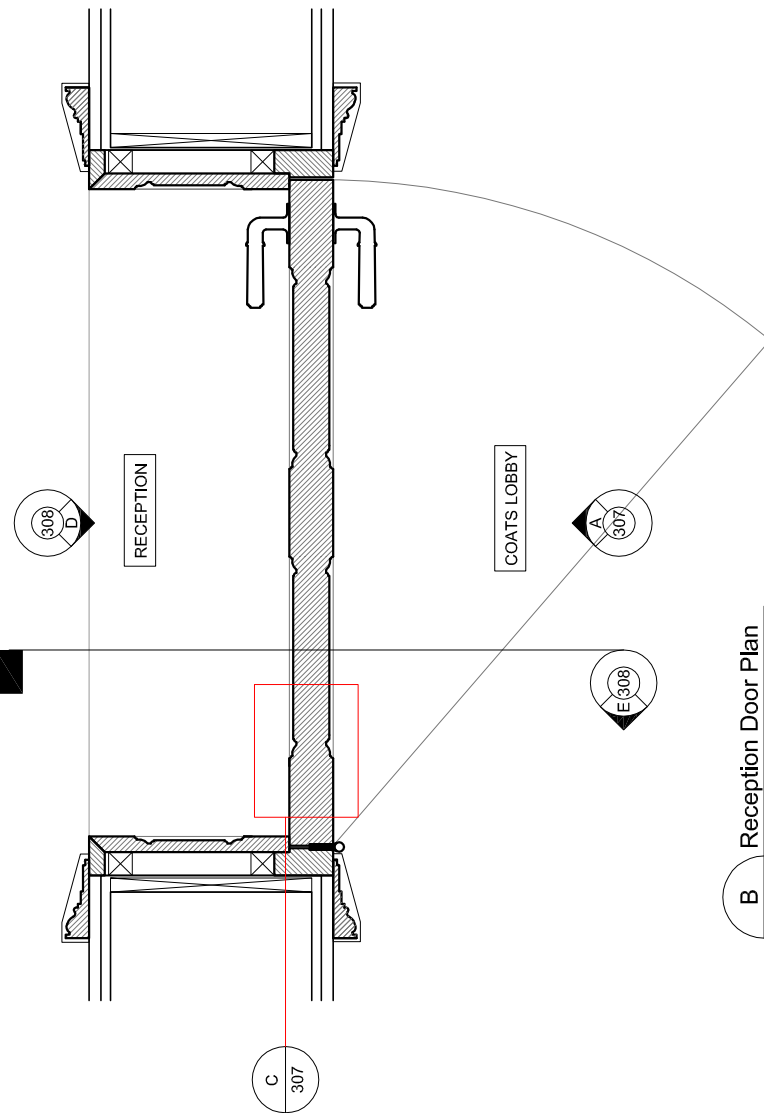
DRAWING TITLE:	
Reception Door Elevations & Details	
DRAWN BY:	CW
CHECKED BY:	SP
ISSUED FOR:	Planning
SCALE:	A3
DATE:	19/01/15
DRAWING NO.:	PL 307
REVISION:	-



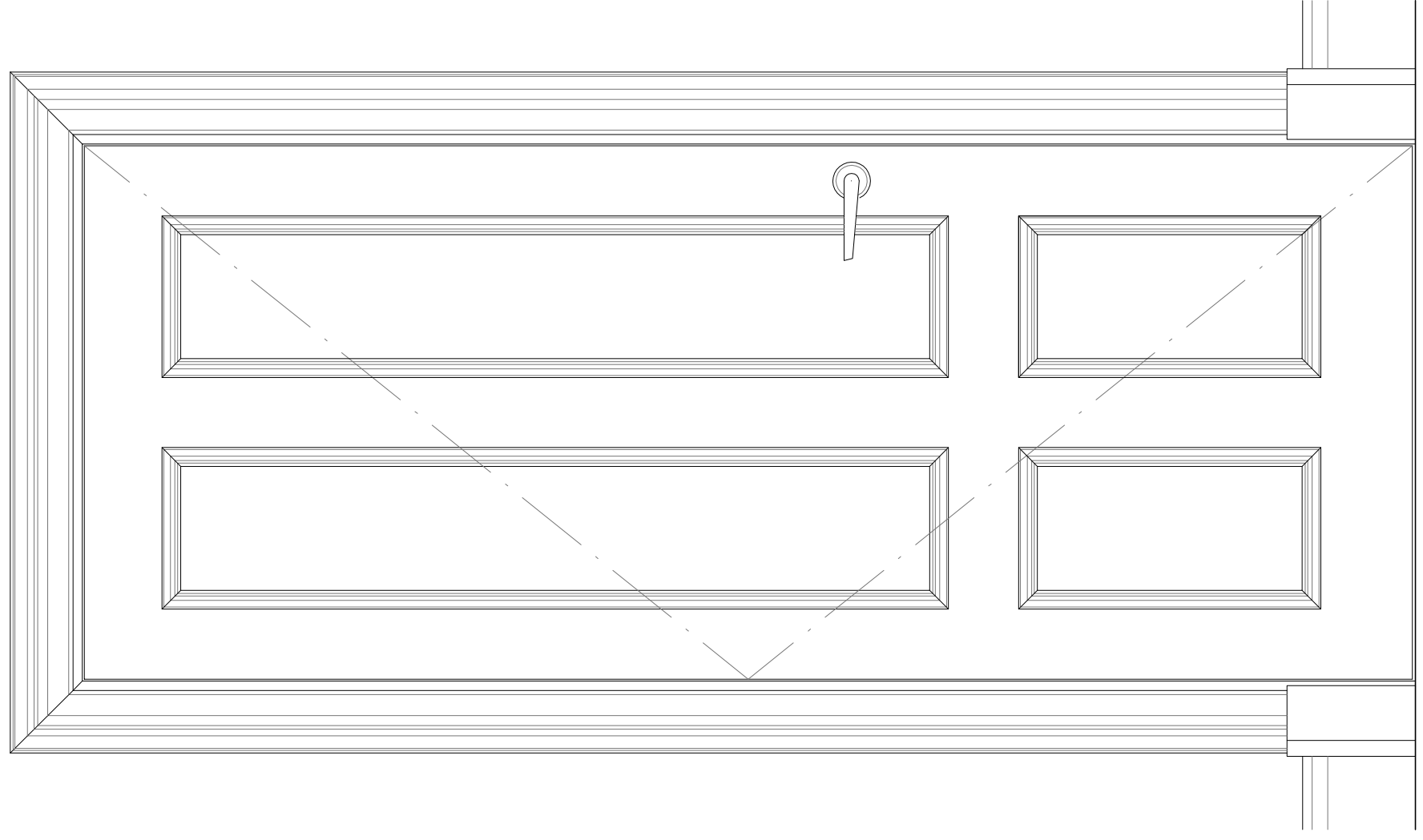
KP
PL307
Reception Door Key Plan
1 : 150



C
PL307
Reception Door Moulding Detail
1 : 1



B
PL307
Reception Door Plan
1 : 10



A
PL307
Reception Door Elevation (Lobby side)
1 : 10

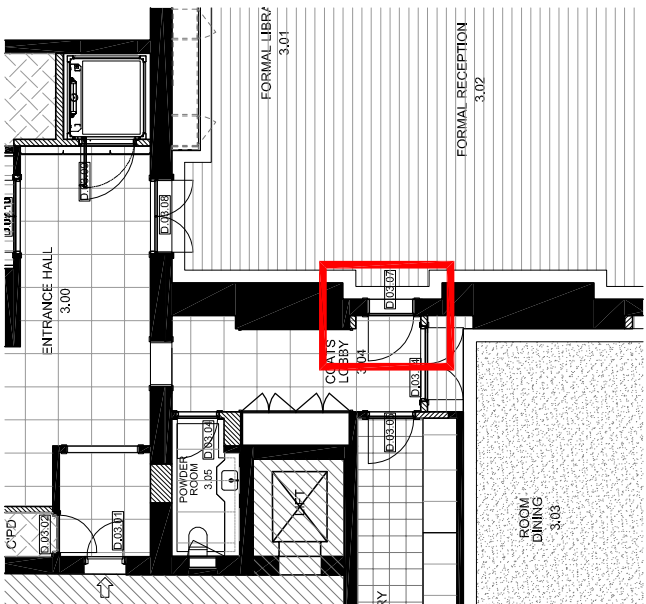


CANDY & CANDY
LONDON

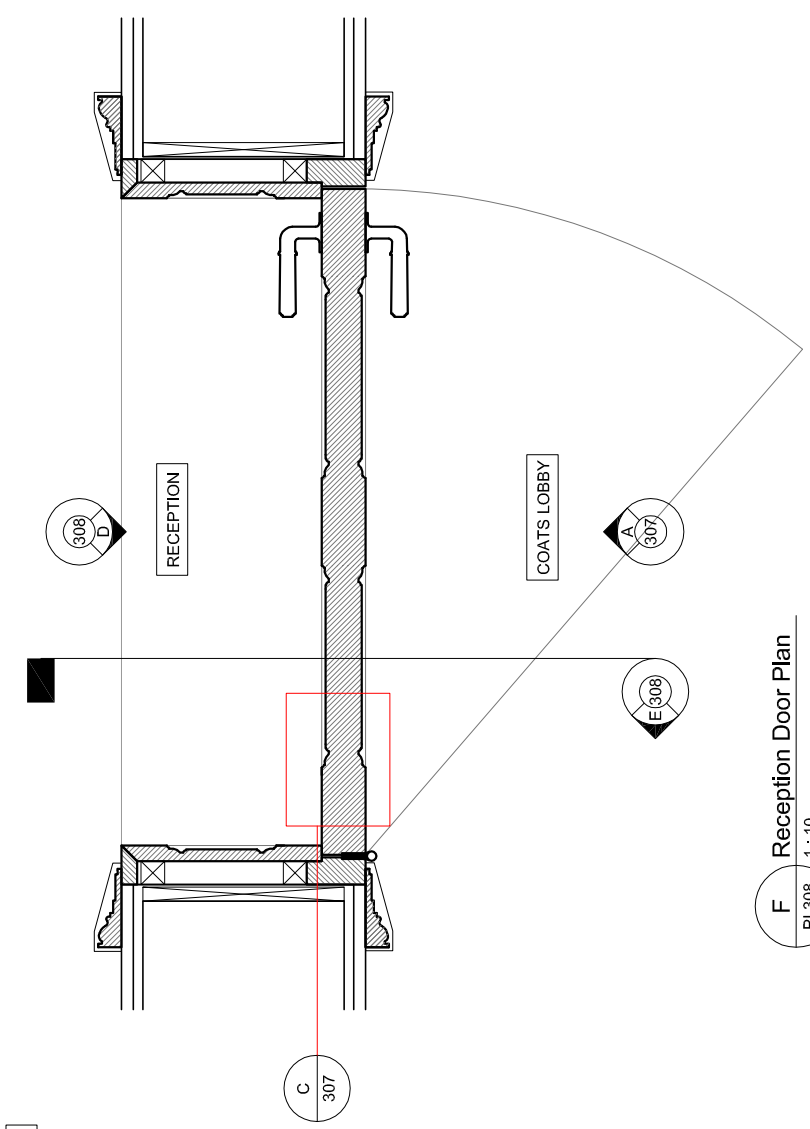
Candy and Candy Ltd
Rutland House
London SW7 1BX
Tel: +44 (0)20 7590 1900
Fax: +44 (0)20 7590 1901
Web: www.candyandcandy.com
E-mail: info@candyandcandy.com

DISCLAIMER:
In accordance with our duties under the
Misrepresentation Act 1967 and the
Consumer Protection Act 1987, these details have been
prepared for you as a guide only and do not constitute
part of a contract or create any contractual
relationship. No description or specification of
materials, workmanship or construction is intended
to be taken as a guarantee of quality or standard.
Candy and Candy, its Agents, whether written or verbal,
are not responsible for any information or statement
contained in these Particulars or elsewhere
which may be relied upon as a statement
of fact. Candy and Candy, its Agents, whether written or
& Candy for its Agents have any authority to
make any representation or warranty and
without responsibility on the part of Candy &
Candy, its Agents or the seller. Any plans, photos,
drawings or specifications are for information only
and do not constitute a contract. Any products and materials
shown or indicated are indicative only and may be
subject to variations or change. It is not possible
to guarantee the accuracy of any information or
alterations to or use of any part of the property is
not a statement that any necessary planning,
regulatory or other approvals have been obtained. These matters must be verified by any
buyer/lessee. Any buyer/lessee must satisfy
himself as to the accuracy of any information given.
© All rights reserved to Candy & Candy.

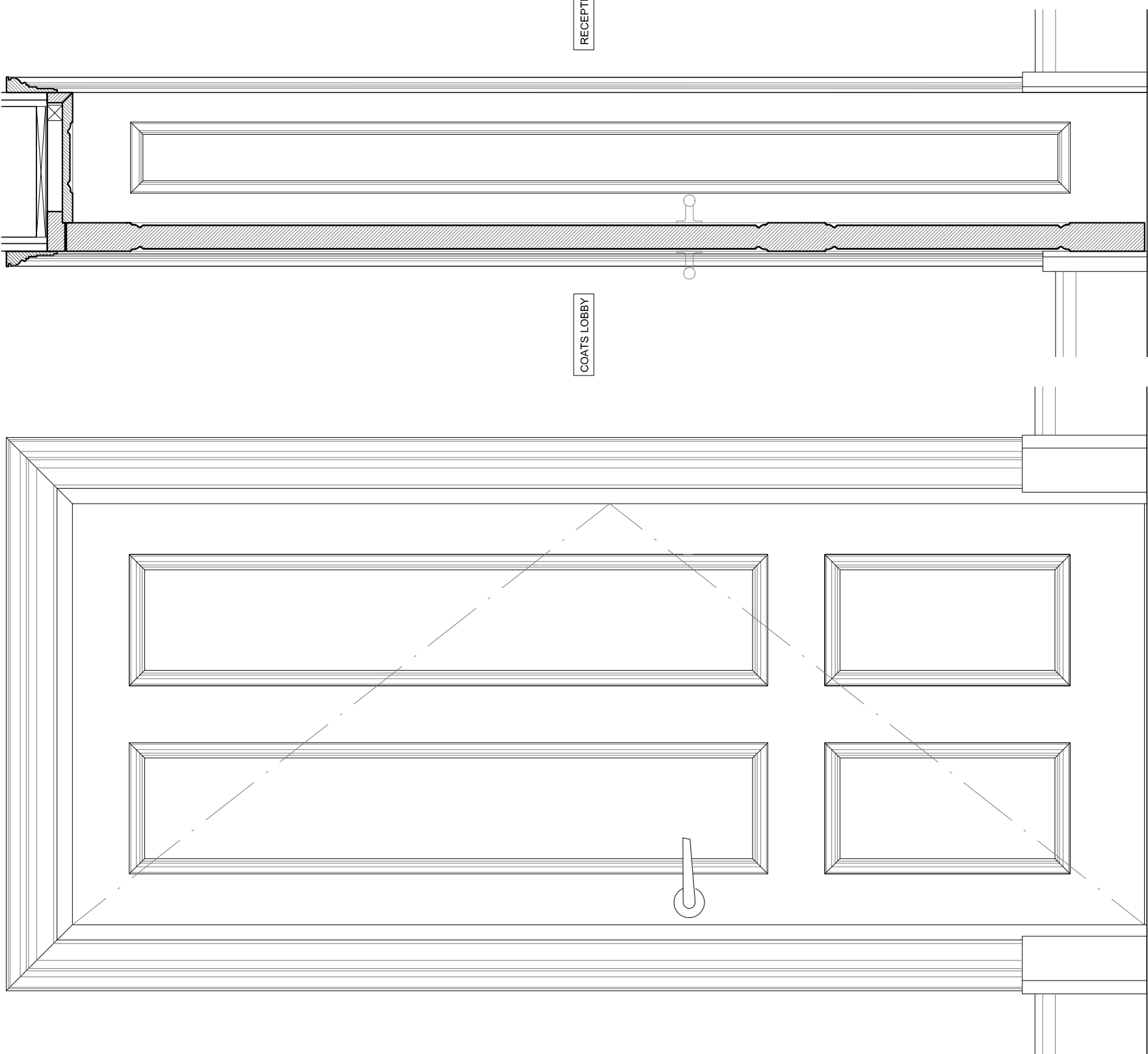
NOTE:



KP Reception Door Key Plan
PL307 1 : 150



F Reception Door Plan
PL308 1 : 10



D Reception Door Elevation (Reception side)
PL308 1 : 10

E Reception Door Reveal Detail
PL308 1 : 10

REV	BY	DATE	DESCRIPTION

PRODUCT CODE:

PROJECT TITLE:
Flat 4, 7 Cambridge Gate

DRAWING TITLE:
Reception Door Elevations & Details

DRAWN BY:	CW	CHECKED BY:	SP
ISSUED FOR:	Planning		
SCALE:	A3	DATE:	19/01/15
DRAWING NO.	PL 308	REVISION:	-

7 Cambridge Gate
Design Documents for Condition 05 b)
Issue Date: 11.02.2015

ARCHITECTURAL PROFILES

7 Cambridge Gate Design Document: Architectural Profiles

Revision A (P)10.02.2015

7 Cambridge Gate Design Document: Architectural Profiles

Revision A (P)10.02.2015

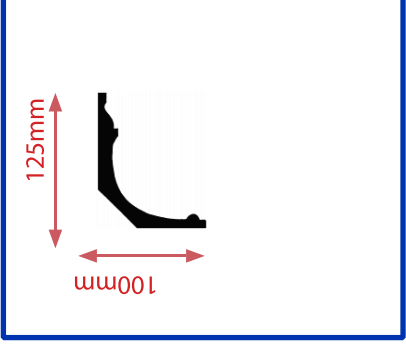
Cornices



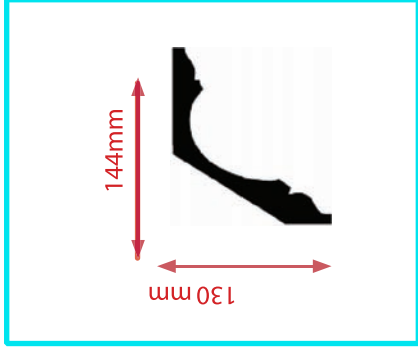
Type 1



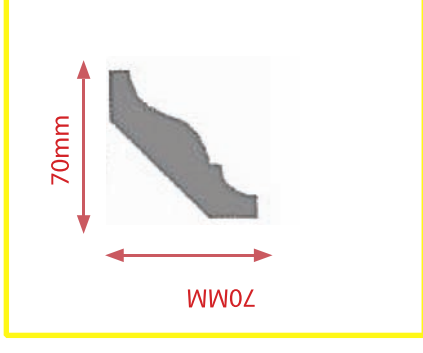
Type 2



Type 3



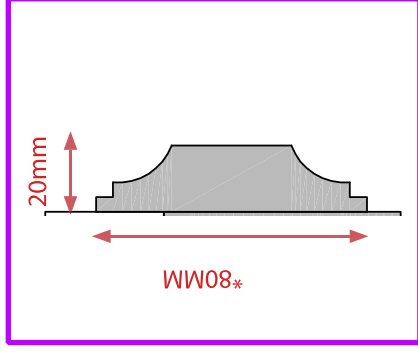
Type 4



Type 5

Moulding detail shown in C&C
DET.03 DRG 401-2

*Dims subject to bulkhead
size



7 Cambridge Gate Design Document: Architectural Profiles

Revision A (P)10.02.2015

Ceiling Profiles:

TYPE 6

Ceiling Rose

3rd Floor

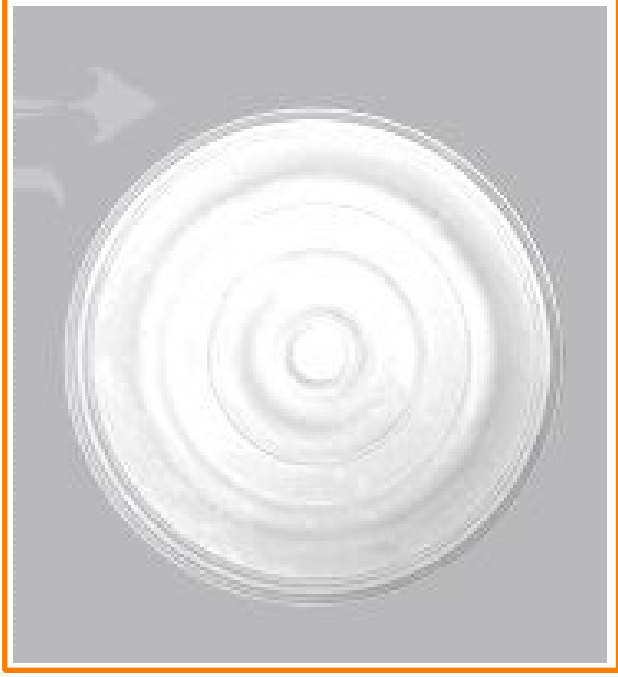
Formal Reception, Formal Library &

Dining Room

Miles & Wilde

MWCR6

Diametre 905mm



TYPE 7

Ceiling Moulding

3rd Floor

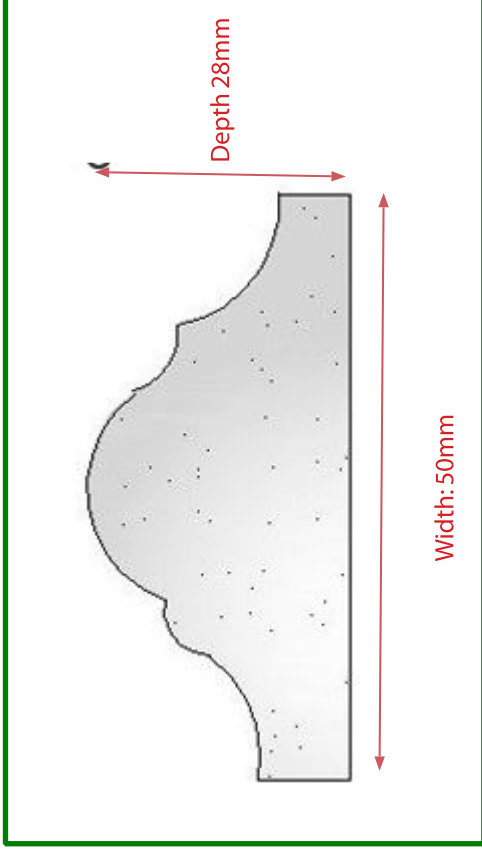
Formal Reception, Formal Library &

Dining Room

ukplaster.com

Panel Mould Small Palin Runn P11

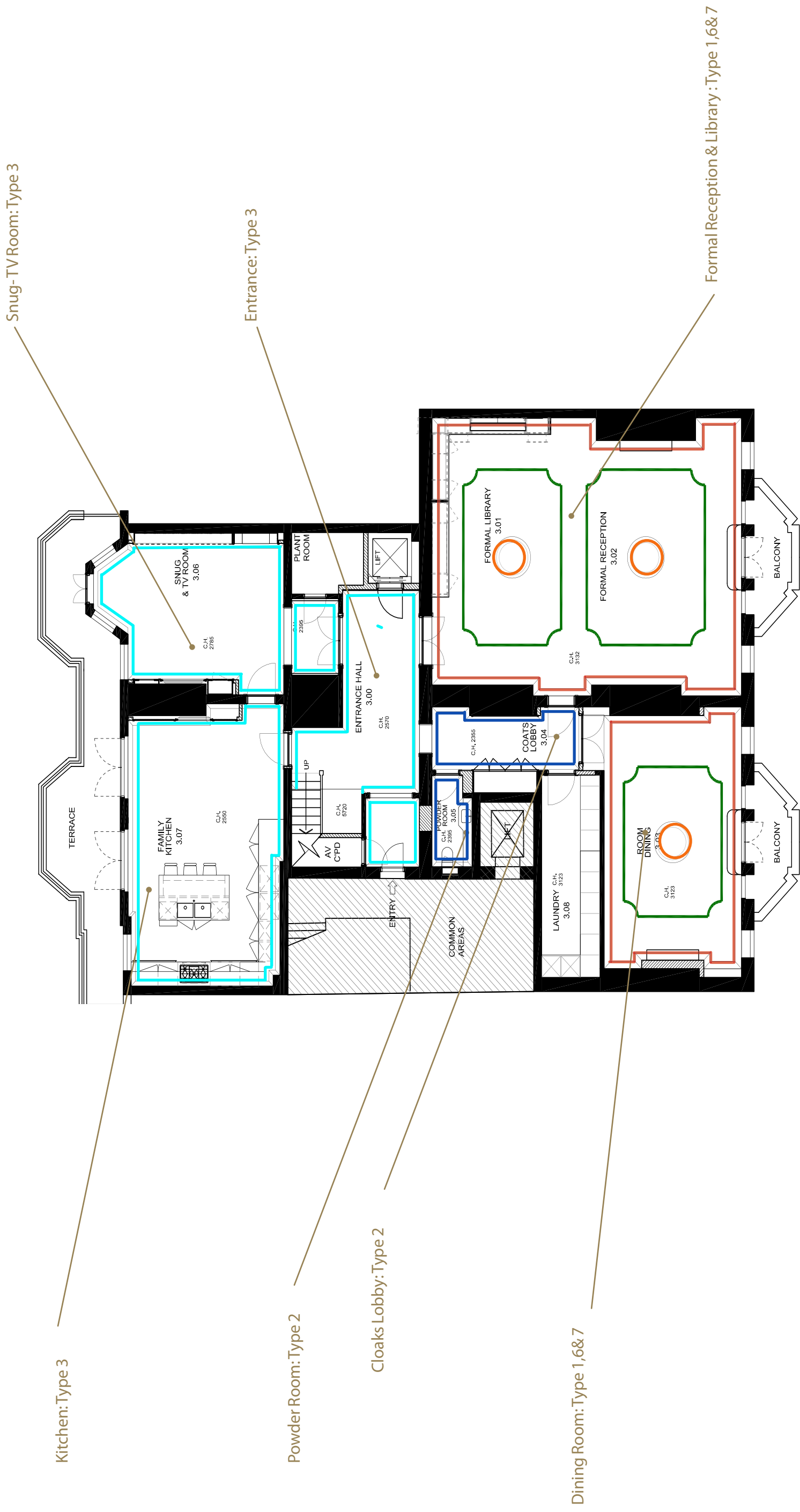
NB: Bespoke Dims



7 Cambridge Gate Design Document: Architectural Profiles

Revision A (P)10.02.2015

Cornices: First Floor



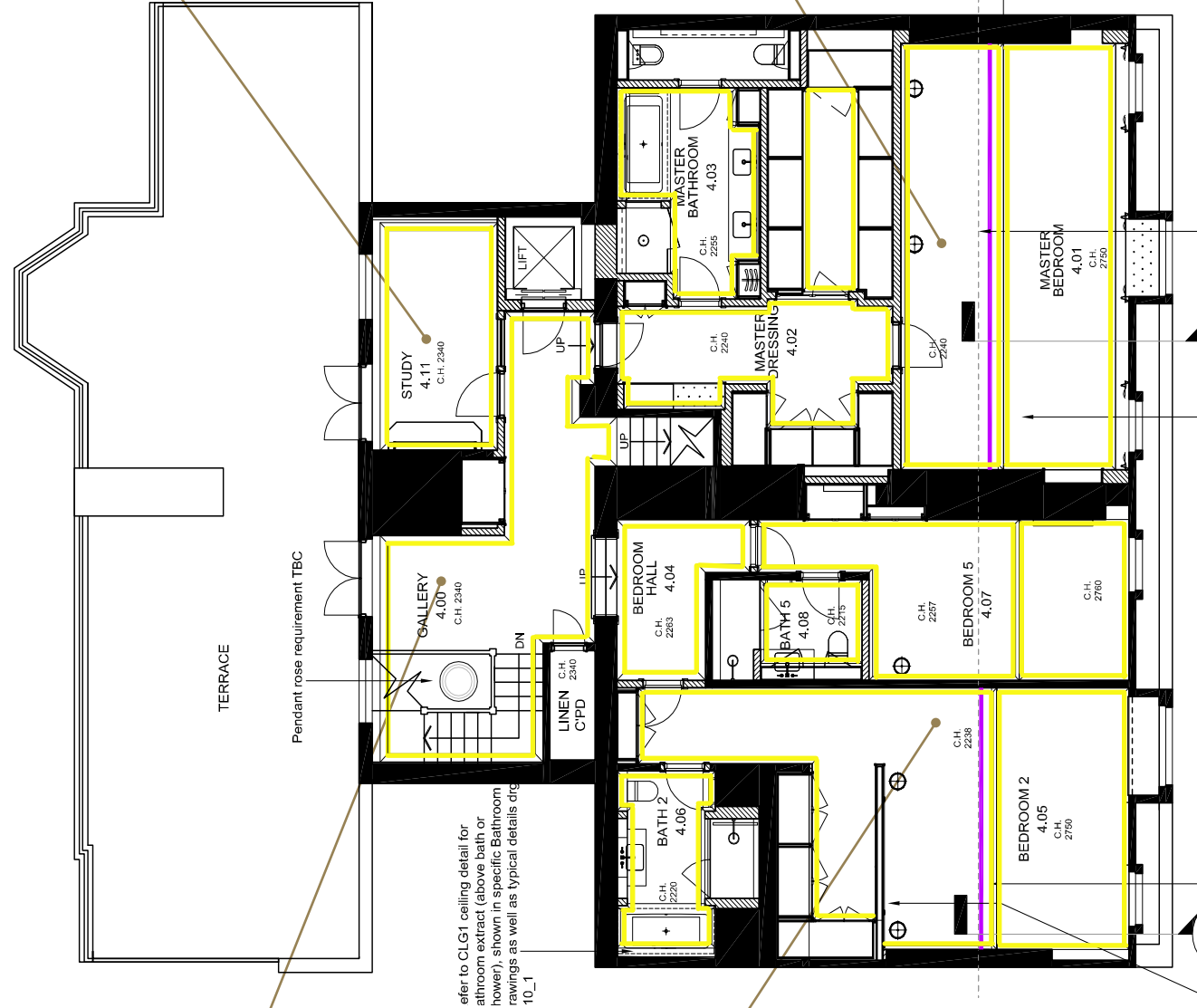
7 Cambridge Gate Design Document: Architectural Profiles

Revision A (P)10.02.2015

Cornices: 2nd Floor

Hallway: TYPE 4

Study: TYPE 4



Guest Bedrooms & Guest Bathrooms: TYPE 4 & 5

Master Bathroom & Master Bedroom: TYPE 4 & 5

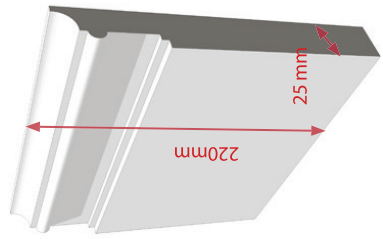
*SAMPLES TO ALL ROOMS TO BE ISSUED FOR C&C APPROVAL

*ALL DIMENSIONS TO BE TEMPLATED ON SITE BY SUPPLIER

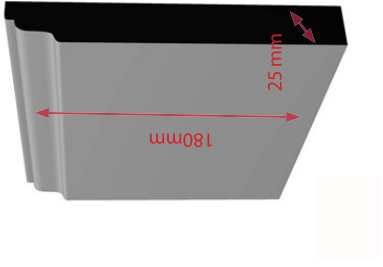
7 Cambridge Gate Design Document: Architectural Profiles

Revision A (P)10.02.2015

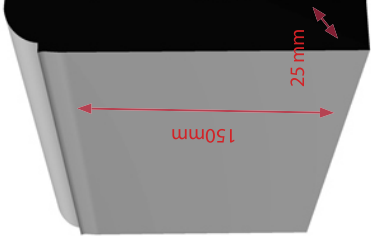
Skirting & Architrave Profiles:



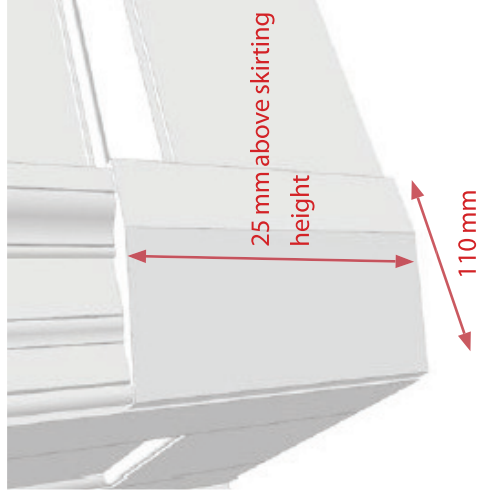
Skirting Type 1
3rd Floor
Formal Reception & Dining Room,
Hallway



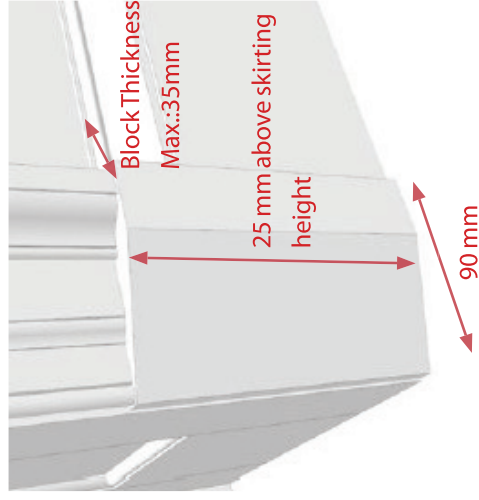
Skirting Type 2
3rd Floor : Entrance Hall, Staircase, Snug,



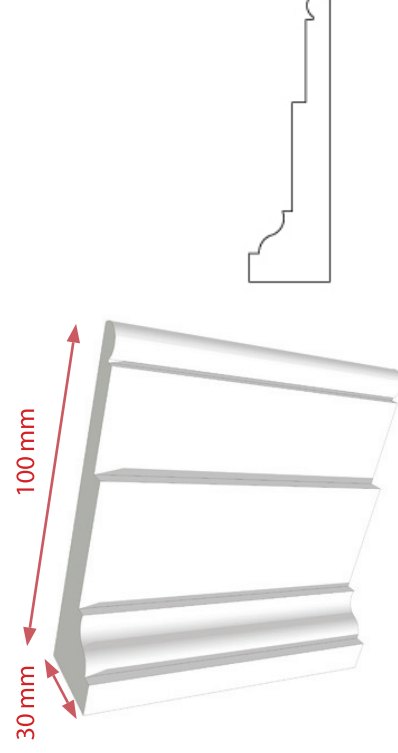
Skirting Type 3
4th Floor & 5th Floor :
Master Bedroom, Guest Bedroom,
Bedroom 3 & 4



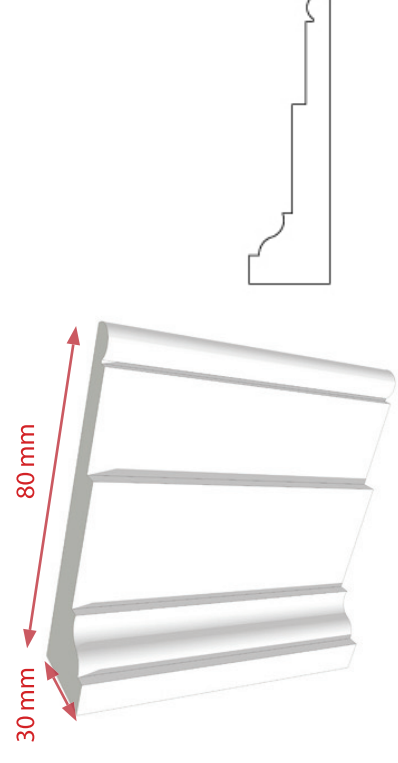
Plinth Block
3rd Floor : All doors



Plinth Block
4th & 5th Floors : All door



Door Architrave
3rd Floor : All Doors
NB: please square off edges to door frame for paint to look clean & sharp



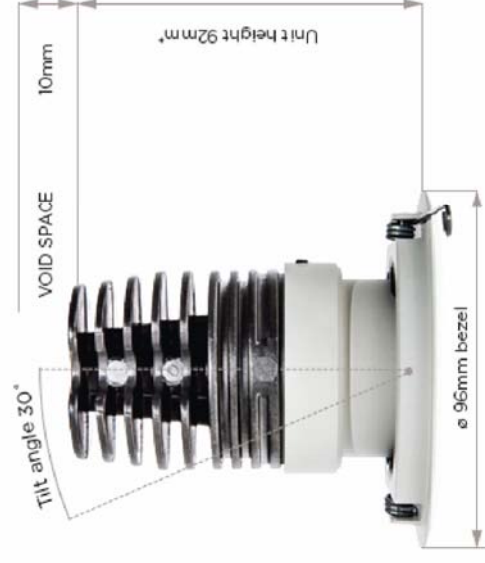
Door Architrave
4th & 5th Floors : All doors
NB: please square off edges to door frame for paint to look clean & sharp

7 Cambridge Gate
Design Documents for Condition 05 d)
Issue Date: 11.02.2015

Details of new lights and light
switches



Downlight bezel is white, light textured powder coated

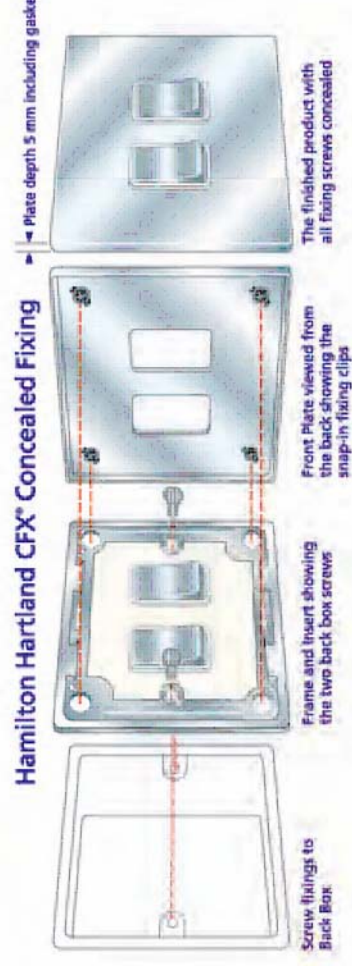


*Low void option available to give a unit height of 78mm. ø 83mm cut out.

A Proposed Downlight Details
306 NTS



Hamilton Hartland CFX (antique brass range)



B Proposed Light Switch Details
306 NTS

Disclaimer

Disclaimer: These drawings, images, plans, photos and/or computer generated images have been prepared by Candy and its subcontractors as a statement of fact and not representation, warranty or undertaking, express or implied, made by Candy & Partners Limited to any person in relation to the drawings, images, plans, photos and/or computer generated images or agents as to any of the contents of these drawings, images, plans, photos and/or computer generated images. Candy & Partners Limited does not accept any liability for any reliance on any drawings, images, plans, photos and/or computer generated images, or any part thereof, made by Candy & Partners Limited or its subcontractors, or any agents, in any circumstances, including any quantities, calculations, areas, measurements or dimensions, or any part thereof, shown on any drawings and not to scale. The contents of this document cannot be guaranteed to represent complete information or to be correct, and the user is advised to verify all information to or use of any part of the project is not a statement or change without notice. Any reference to alterations or other consent has been obtained. These drawings must be read in conjunction with the project specifications, in compliance with any applicable laws, regulations, codes, standards, specifications, or any other documents, in these drawings, images, plans, photos and/or computer generated images. The copyright in these drawings, images, plans, photos and/or computer generated images belongs to Candy and its subcontractors. All rights are reserved. No part of this document may be reproduced, stored, distributed or in any way used or exploited other than in whole or in part.

Notes

Rev	Date	Name	Revision Notes

Project Title
7 CAMBRIDGE GATE

Drawing Description
**Details and Specification
Light Switch and Downlights**

Drawing Number
PL306

Scale
A3

Date Drawn
15/01/15

Drawn By
CW

Checked By
SP

Purpose Of Issue	Revision
Planning	

Global Headquarters
Candy & Candy Limited
Rutland House
Rutland Gardens
London SW7 1BX
Tel: +44 (0)20 7590 1900
Fax: +44 (0)20 7590 1901
Web: www.candyandcandy.com
E-mail: info@candyandcandy.com

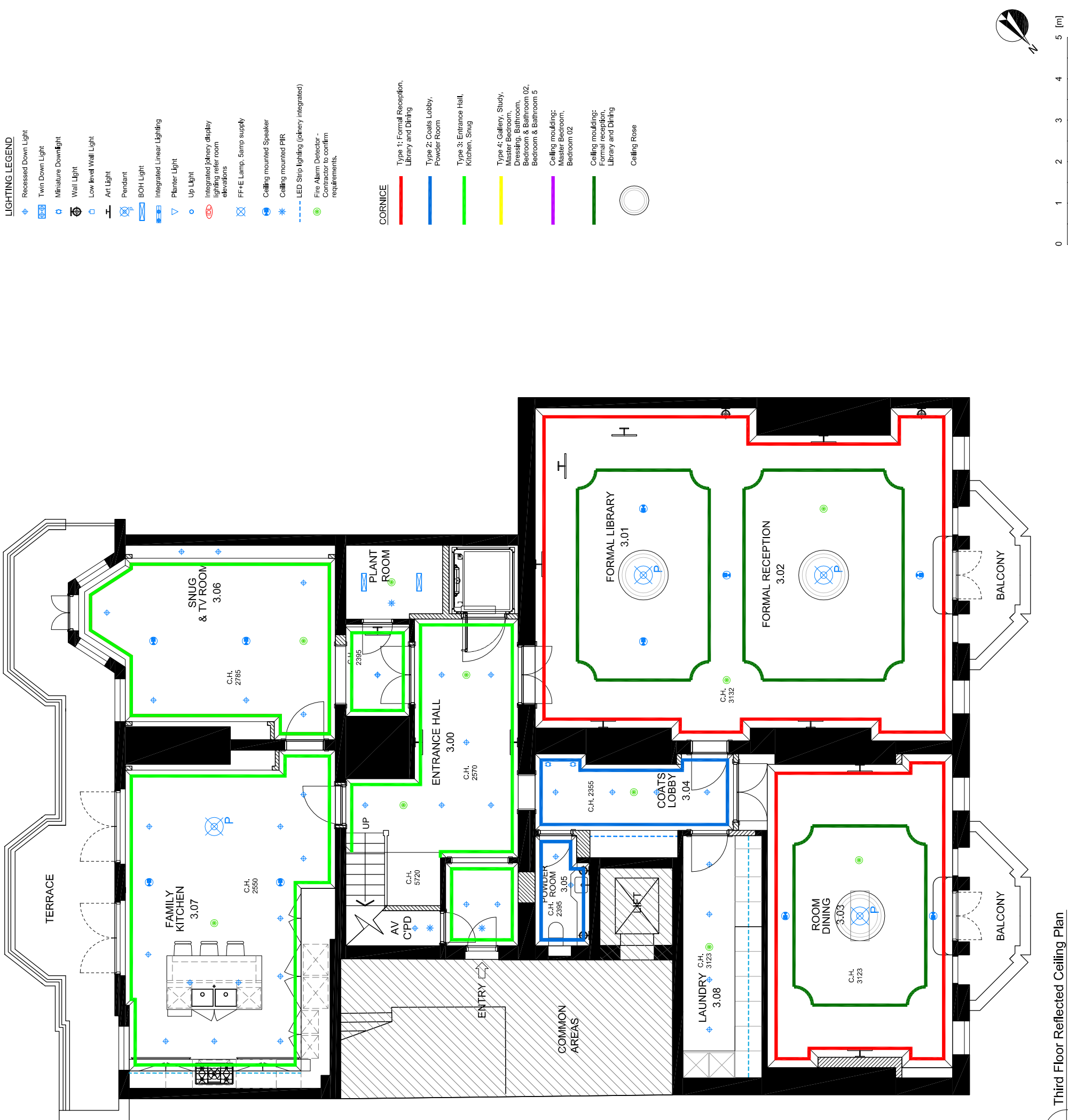


Disclaimer: These drawings, images, plans, photos and/or computer generated images have been prepared by Candy & Candy Limited as a statement of fact and not representation, warranty or undertaking, express or implied, is made by Candy & Candy Limited or its directors, officers, employees or agents as to any of the contents of these drawings, images, plans, photos and/or computer generated images. No liability is accepted by Candy & Candy Limited or its directors, officers, employees or agents for any loss or damage, howsoever caused, in any way arising from the use of these drawings, images, plans, photos and/or computer generated images. The contents of these drawings, images, plans, photos and/or computer generated images are for the use of the recipient and not to be used for any other purpose without the prior written consent of Candy & Candy Limited. The contents of these drawings, images, plans, photos and/or computer generated images are not to be used for any other purpose without the prior written consent of Candy & Candy Limited. The contents of these drawings, images, plans, photos and/or computer generated images are not to be used for any other purpose without the prior written consent of Candy & Candy Limited. The contents of these drawings, images, plans, photos and/or computer generated images are not to be used for any other purpose without the prior written consent of Candy & Candy Limited.

Rev	Date	Name	Revision Notes

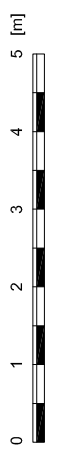
Project Title	7 CAMBRIDGE GATE
Drawing Description	Reflected Ceiling Plan Third Floor
Drawing Number	PL341
Scale	A3
Date Drawn	15/01/15
Drawn By	CW
Checked By	SP
Purpose Of Issue	Planning
Revision	

Global Headquarters
 Candy & Candy Limited
 Rutland House
 Rutland Gardens
 London SW7 1BX
 Tel: +44 (0)20 7590 1900
 Fax: +44 (0)20 7590 1901
 Web: www.candyandcandy.com
 E-mail: info@candyandcandy.com



- LIGHTING LEGEND**
- Recessed Down Light
 - Twin Down Light
 - Miniature Downlight
 - Wall Light
 - Low level Wall Light
 - Art Light
 - Pendant
 - BOH Light
 - Integrated Linear Lighting
 - Planter Light
 - Up Light
 - Integrated linear display lighting refer room elevations
 - FF+E Lamp, Lamp supply
 - Ceiling mounted Speaker
 - Ceiling mounted PIR
 - LED Strip Lighting (joinery integrated)
 - Fire Alarm Detector - Connector to confirm requirements.

- CORNICE**
- Type 1: Formal Reception, Library and Dining
 - Type 2: Coats Lobby, Powder Room
 - Type 3: Entrance Hall, Kitchen, Snug
 - Type 4: Gallery, Study, Master Bedroom, Dressing, Bathroom, Bedroom & Bathroom 02, Bedroom & Bathroom 5
 - Ceiling moulding: Master Bedroom, Bedroom 02
 - Ceiling moulding: Formal reception, Library and Dining
 - Ceiling Rose



Third Floor Reflected Ceiling Plan
 341 1 : 100

Disclaimer: These drawings, images, plans, photos and/or computer generated images have been prepared by Candy & Candy Limited as a statement of fact and not representation, warranty or undertaking, express or implied, is made by Candy & Candy Limited or its directors, officers, employees or agents, as to any of the contents of these drawings, images, plans, photos and/or computer generated images. Candy & Candy Limited, its directors, officers, employees or agents, shall not be liable for any reliance on any information or data contained in these drawings, images, plans, photos and/or computer generated images, or any part of the project is not a statement or change without notice. Any reference to alterations or other consent has been obtained. These drawings shall be used only for the purposes stated and shall not be used for any other purpose without the written consent of Candy & Candy Limited. The copyright in these drawings, images, plans, photos and/or computer generated images belongs to Candy & Candy Limited and shall remain the property of Candy & Candy Limited. No part of these drawings, images, plans, photos and/or computer generated images may be copied, altered, published, transmitted, sold, distributed or in any way used or exploited other than in whole or in part.

Rev	Date	Name	Revision Notes

Project Title	7 CAMBRIDGE GATE
Drawing Description	Reflected Ceiling Plan Fifth Floor
Drawing Number	PL541
Scale	A3
Date Drawn	31/10/14
Drawn By	CW
Checked By	SP
Purpose Of Issue	Revision
Planning	-

Global Headquarters
 Candy & Candy Limited
 Rutland House
 Rutland Gardens
 London SW7 1BX
 Tel: +44 (0)20 7590 1900
 Fax: +44 (0)20 7590 1901
 Web: www.candyandcandy.com
 E-mail: info@candyandcandy.com

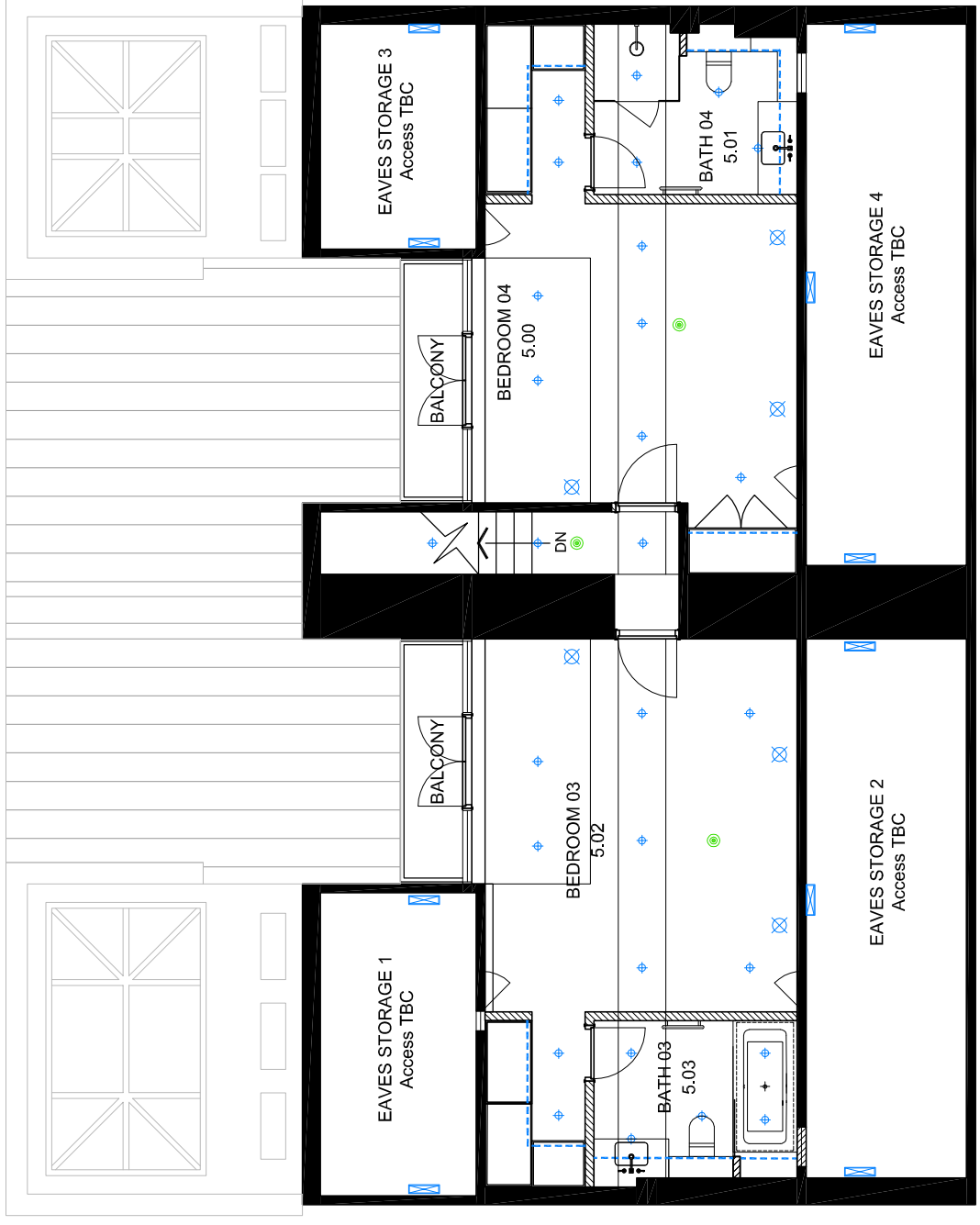


LIGHTING LEGEND

- ◆ Recessed Down Light
- ◆ Twin Down Light
- Miniature Downlight
- Wall Light
- Low level Wall Light
- ⊥ Art Light
- ⊙ Pendant
- ⊙ BOH Light
- ▬ Integrated Linear Lighting
- ▽ Planter Light
- Up Light
- ⊙ Integrated linear display lighting refer room elevations
- ⊙ FF+E Lamp, Samp supply
- ⊙ Ceiling mounted Speaker
- ⊙ Ceiling mounted PIR
- ⊙ LED Strip Lighting (joinery integrated)
- ⊙ Fire Alarm Detector - Connector to confirm requirements.

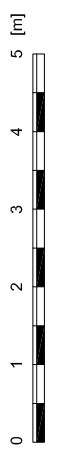
CORNICE

- ▬ Type 1: Formal Reception, Library and Dining
- ▬ Type 2: Entrance Hall, Kitchen, Shug, Coals Lobby, Powder Room, L04 Gallery, Study, Bedrooms Hall
- ▬ Type 3: Master Bedroom, Dressing, Bathroom, Bedroom & Bathroom 02, Bedroom & Bathroom 5
- Ceiling moulding: Formal reception, Library and Dining
- Ceiling Rose



Fifth Floor Reflected Ceiling Plan

541 1 : 100



7 Cambridge Gate
Design Documents for Condition 05 e)
Issue Date: 11.02.2015

Floor Finishes Layouts

Disclaimer: These drawings, images, plans, photos and/or computer generated images have been prepared by Candy & Candy Limited as a statement of fact and not representation, warranty or undertaking, express or implied, in made by Candy & Candy Limited to any third party. Candy & Candy Limited, its directors, employees or agents, as to any of the contents of these drawings, images, plans, photos and/or computer generated images, does not accept any liability for any reliance on any information or data contained in these drawings, images, plans, photos and/or computer generated images, or for any loss or damage, including any consequential loss, arising from the use of any information or data contained in these drawings, images, plans, photos and/or computer generated images. The details contained herein, including any quantities, calculations, areas, measurements or dimensions, are for information only and are not to be used for any purpose whatsoever. The contents of this document cannot be guaranteed to represent complete representations and are not to be used for any purpose whatsoever. Any reliance on any information or data contained in these drawings, images, plans, photos and/or computer generated images belongs to Candy and Candy Limited. Candy & Candy Limited, its directors, employees or agents, in no way warrants, represents, guarantees, or makes any representation, express or implied, in these drawings, images, plans, photos and/or computer generated images. Candy and Candy Limited, its directors, employees or agents, do not accept any liability for any loss or damage, including any consequential loss, arising from the use of any information or data contained in these drawings, images, plans, photos and/or computer generated images in whole or in part.

Rev	Date	Name	Revision Notes

Project Title
7 CAMBRIDGE GATE

Drawing Description	Floor Finishes Plan
Third Floor	

Drawing Number	PL311
Scale	A3

Date Drawn	15/01/15
Drawn By	CW

Checked By	SP
Purpose Of Issue	Revision
Planning	

Global Headquarters
 Candy & Candy Limited
 Rutland House
 Rutland Gardens
 London SW7 1BX
 Tel: +44 (0)20 7590 1900
 Fax: +44 (0)20 7590 1901
 Web: www.candyandcandy.com
 E-mail: info@candyandcandy.com



METAL FLOOR THRESHOLDS

- TH-01 Stone/Timber
- TH-02 Timber/Carpet
- TH-03 Carpet/Stone, Tile
- TH-04 Timber/Vinyl

TILE - Ceramic Tile

SS - Stone Slab

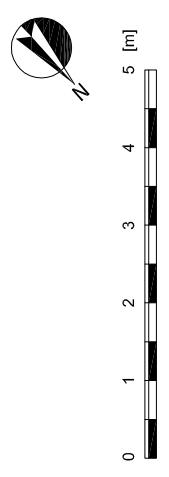
ST - Stone Tile

Floor Paint

CPT - Fitted Carpet
INS - Inset Carpet
RUG - Rug Carpet

TI - Timber

VINYL - Vinyl



All external refurbishment finishes works to match existing

Timber stairs with carpet runner.

New stone hearth to fireplace.

Inset carpet in timber border

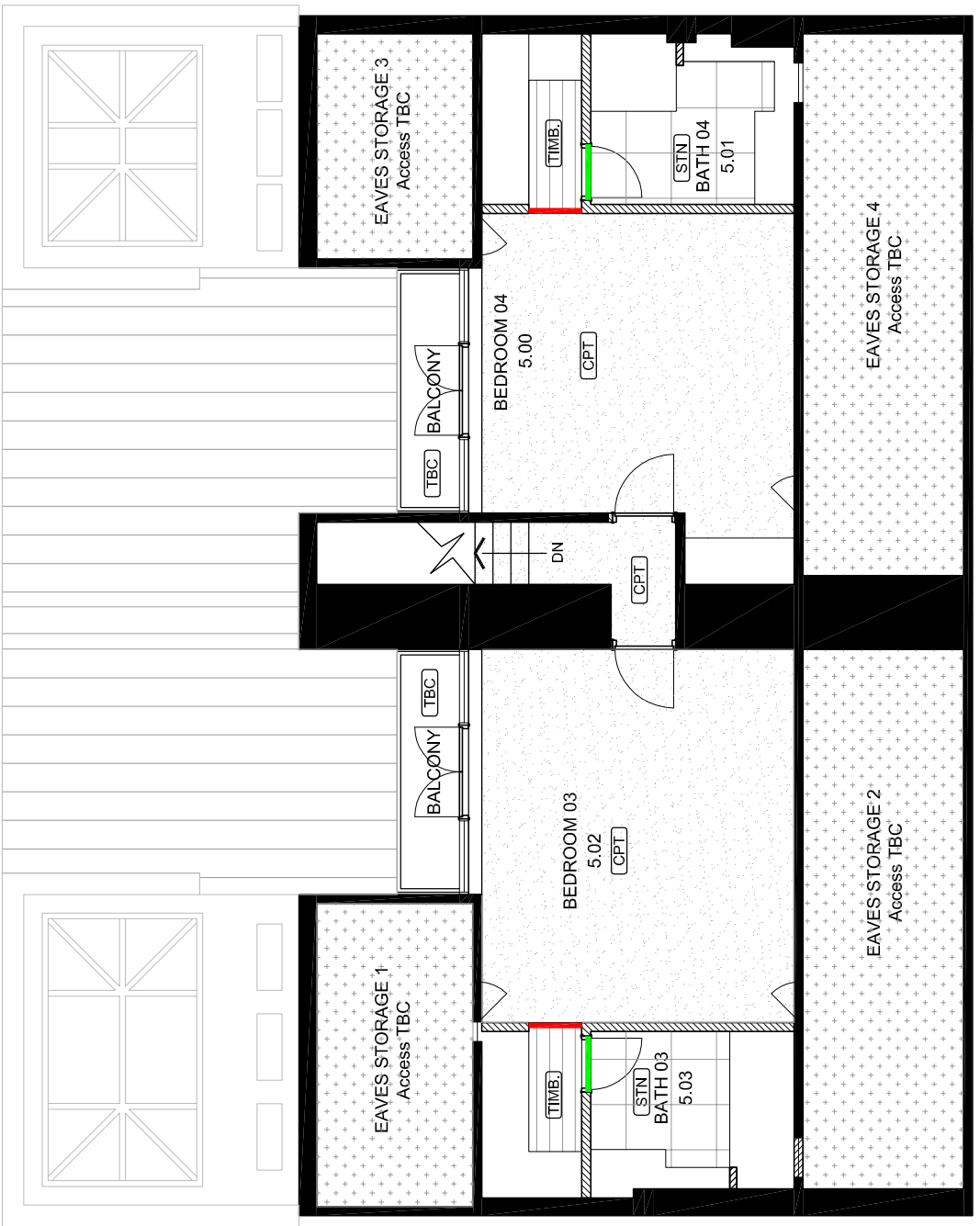
All external refurbishment finishes works to match existing

311 Third Floor Finishes Plan
 1 : 100

Disclaimer: These drawings, images, plans, photos and/or computer generated images have been prepared by Candy & Candy Limited as a statement of fact and not representation, warranty or undertaking, express or implied, is made by Candy & Candy Limited or any of its directors, employees or agents, as to any of the contents of these drawings, images, plans, photos and/or computer generated images. Candy & Candy Limited and its directors, employees or agents do not warrant or represent that the information contained in these drawings, images, plans, photos and/or computer generated images is accurate, complete, correct, up to date or otherwise. They are not intended to constitute any contract, agreement or representation, and no liability is accepted by Candy & Candy Limited or any of its directors, employees or agents in relation to the drawings, images, plans, photos and/or computer generated images, or any part of the project, or any part of the project is not a statement or a representation, warranty or undertaking, express or implied, is made by Candy & Candy Limited or any of its directors, employees or agents, as to any of the contents of these drawings, images, plans, photos and/or computer generated images. The drawings, images, plans, photos and/or computer generated images belong to Candy & Candy Limited and are not to be copied, altered, published, transmitted, sold, distributed or in any way used or exploited other than in whole or in part.

- METAL FLOOR THRESHOLDS**
- TH-01 Stone/Timber
 - TH-02 Timber/Carpet
 - TH-03 Carpet/Stone, Tile
 - TH-04 Timber/Vinyl

- TILE - Ceramic Tile**
- ST - Stone**
- Floor Paint**
- CPT - Fitted Carpet**
INS - Inset Carpet
RUG - Rug Carpet
- TI - Timber**
- VINYL - Vinyl**



511 - Fifth Floor Finishes Plan
1:100

0 1 2 3 4 5 [m]

Notes

-
-
-
-
-
-
-
-
-
-

Rev	Date	Name	Revision Notes

Project Title	7 CAMBRIDGE GATE
Drawing Description	Finishes Plan
Drawing Number	PL511
Scale	A3
Date Drawn	31/10/14
Drawn By	CW
Checked By	SP
Purpose Of Issue	Planning
Revision	

Global Headquarters
Candy & Candy Limited
Rutland House
Rutland Gardens
London SW7 1BX
Tel: +44 (0)20 7590 1900
Fax: +44 (0)20 7590 1901
Web: www.candyandcandy.com
E-mail: info@candyandcandy.com

