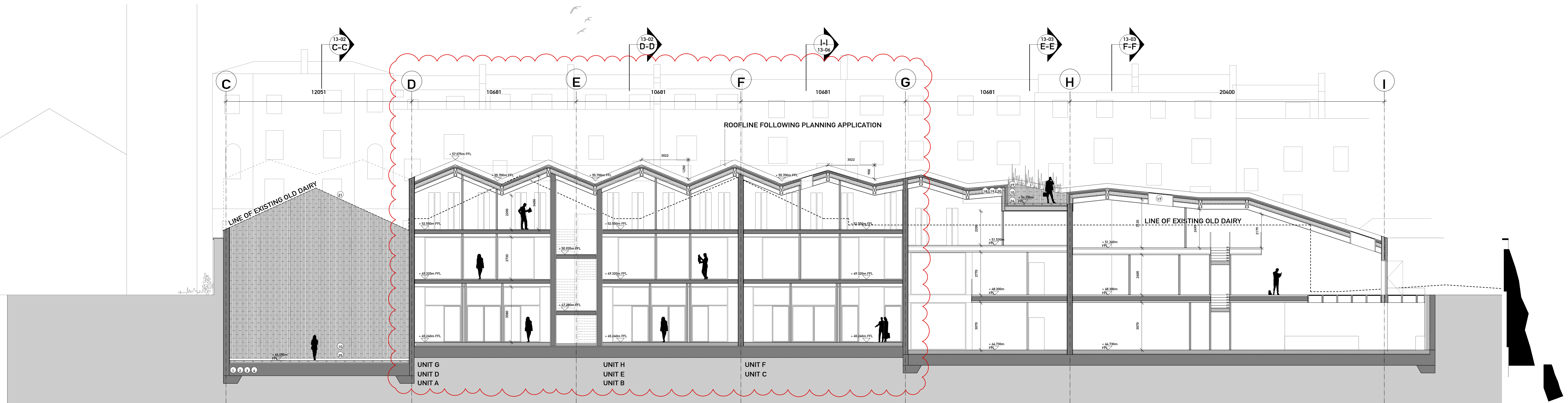
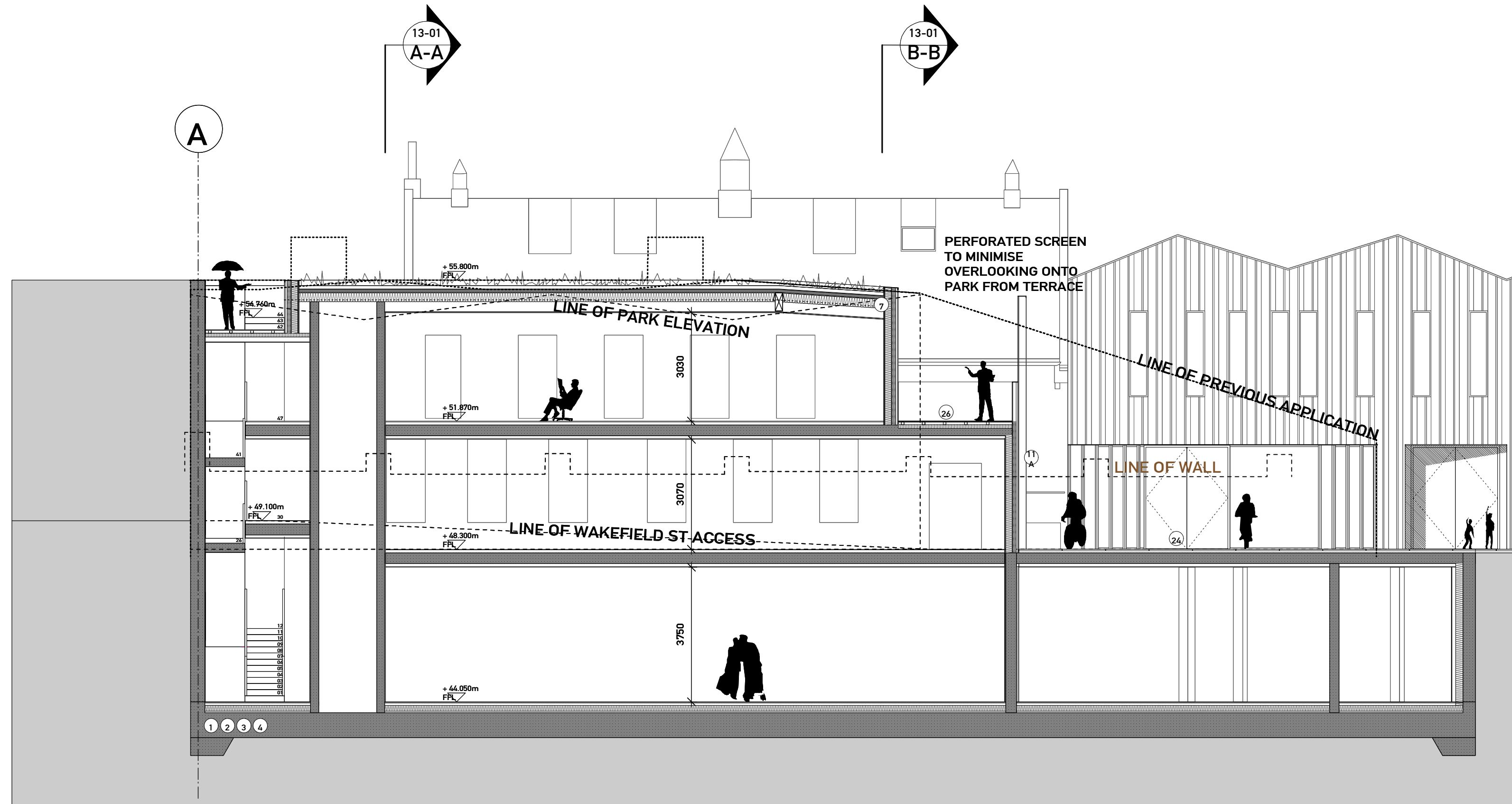


SECTION G-G

SECTION H-H



DRAWING TO BE READ IN CONJUNCTION WITH
THE SPECIFICATION AND ALL RELEVANT
DRAWINGS.
DO NOT SCALE FROM THIS DRAWING.

MATERIAL SPECIFICATION:

WALL CONSTRUCTION:

- 1. Basement to be waterproofed to grade 3 using specialist concrete admixture, waterbars to be used at all joints
- 2. 300mm raft foundation under basement
- 3. 300mm flat concrete slab with 150mm buildup
- 4. 350mm concrete retaining structure to basement perimeter.

underpinning to listed wall according to engineer's method statement

- 5. Cores loadbearing concrete walls 250mm
- 6. 150mm steel columns under flat slab to be 225mm diameter fireproofed with intumescent paint

W2 - Raft & Wall Construction to incorporate continuous insulation in addition to insulation within the structure to achieve a u-value of 0.10 W/m²K

FLOOR CONSTRUCTION:
8. Floating floor on 18mm plywood deck, metal web floor system, W3300 EasiJoist, at 600mm centres
9. Glazed floor sections:
structural laminated glass floor panels, anti-slip surface finish

CERAMIC CLADDING.
10. Glazed bespoke fluted ceramic cladding, 200mm x 500mm and 1000mm, varied tones of white and cream, hung on aluminium sections. Vertical joints lapped, horizontal joints open maximum 9mm. To courtyards, undercroft, roof terraces and garden wall to rear of residential and commercial units as per drawings. Manufacturer NBS ceramics

METAL CLADDING:
11A. Copper-alloy cladding comprising 1.0mm thick TECU® Brass Profiled Elements
Support structure: Eurotox or similar secondary metal support grid
Cladding system: Wetco® Profiled TECU® Brass Cladding System
Cladding panel: Pre-fabricated burnished brass, manufacturer KME
Material: TECU® Brass, CuSn 30, R-250. Thickness: 1.0mm
Finish: Manual oil-burnished finish on outer surfaces to architects approved sample
Contractor design to include adequate measures to prevent bi-metallic or chemical corrosion of adjacent materials to the brass
11B. Copper-alloy profiled cladding, TECU® Brass or similar approved
11C. Copper-alloy cladding, TECU® Brass or similar approved

GLAZING:

- 2. Ground – lower ground floor facade, glazing to incorporate slides and openings, aluminium frame, polyester powder coated to match metal cladding.
- 3. Manufacturer Catalogue or similar
- 4. Upper Ground floor lower position to be mechanically adjusted for increased privacy
- 5. 1st floor hand-crank timber sliding windows behind metal fins. Fixed fins 130mm x 2200mm set flush with facade at regular spacings, sliding fins 400mm x 2300mm set back from facade. Internal glazed
- 6. 15. Inward opening aluminium windows, 560mm x 2400mm/2 x 350mm x 2400mm, recessed in profiled metal to mitigate overlooking/recess finish around window to maximise reflectance
- 7. 16. 1st floor upward on 75mm x 400mm concrete fins at approx 1m centres
- 7. 17. Rooflights, frameless, steel, flush with standing seam roof, manufacturer: The Rooflight Company range New (or similar)

Note: All louvers and window frames to match TCLA profiled metal.

Note: All glazing to be Ball-Bear Glass.

Note: All glass specification to comply with consultation requirements.

ROOF FINISHES:
18. Standing seam copper-alloy to match profiled metal cladding, TECU or similar
19. All gutters and downpipes to be concealed
20. Parapet capping to match profiled metal cladding, TECU or similar
21. Brown roof over Unit 1 to increase biodiversity

BRICK CLADDING:
22. Petersen's bricks (228mm x 108mm x 54mm), warm red, header band with alternate bricks omitted in sections, within expressed steel frame
23. Windows to sit behind fixed brick facade. Stagger bond setting out to have mission bricks as shown on elevation

EXTERNAL FLOOR FINISHES:
24. Forecourt - reinforced limestone external paving, flamed finish
Manufacturer: Hardscape
25. Basement courtyards - limestone external paving, flamed finish
Manufacturer: Hardscape
26. Unit 1 Terrace + Roof Terraces - Cedar decking with rough planed finish

OTHER:
27. Bespoke Glazed roof access hatch to private terraces.
Note: Roof terraces to be fitted with beacon alarm system for fire safety purposes. Final solution to be approved by building control officer
28. Forecourt balustrade - to match profiled metal cladding, TECU or similar

29. Roof Terrace planter - to match profiled metal cladding, TECU or similar

30. Glazed Terrace Balustrade

LANDSCAPE SPECIFICATION:
FLOOR FINISHES (outside Unit 01)
Reclaimed and reuse existing granite sets, flat topped and smooth la
Pavement width 1.8m, precast concrete panels with circular glass
pavement lights. Manufacturer: Luxcrete or similar

SHAPED SURFACE (outside unit U2, U3 + U4)
Robust large format limestone paving suitable for heavy duty access
by emergency and servicing vehicles
Manufacturer Hardscape

FOOTPATH, FORECOURT + COURTYARDS
Limestone pavers, varied smooth and rough split texture. 100mm x 500mm
Tree pits with limestone edging and tree grilles
Manufacturer: Hardscape

LIGHTING

Recessed flush into soffits of building overhangs
Manufacturer: Louis Poulsen

CYCLE PARKING
Shelford stands of stainless steel flats, with concealed fixings, set in areas of limestone gravel

PLANTING
Native species planted in zone along listed wall

Project:
1250

Old Dairy

Drawing Title:
Section G-G + H-H

Stage:
Planning

Drawing no:

1250-13-004-PA01

Date: 06.02.2015

Scale: 1:100

Format: A1++

Status: INFORMATION

Drawn by: AMc

Revision: -

30 Cowcross
London EC1M 6EJ
Tel: +44 (0) 20 7308 7020
Fax: +44 (0) 20 7308 7020

info@e300.org
www.e300.org