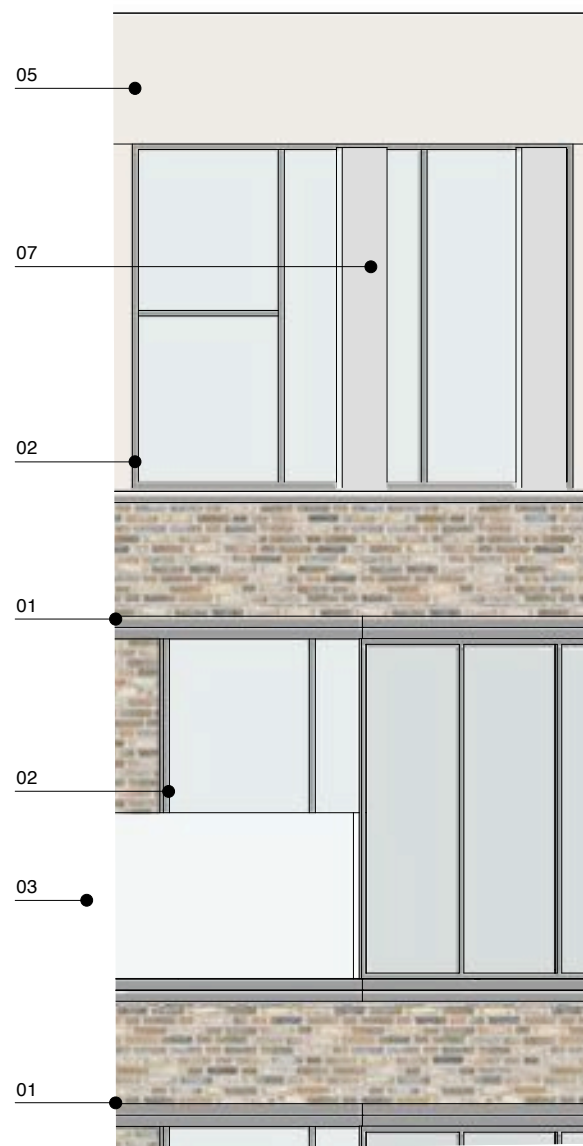


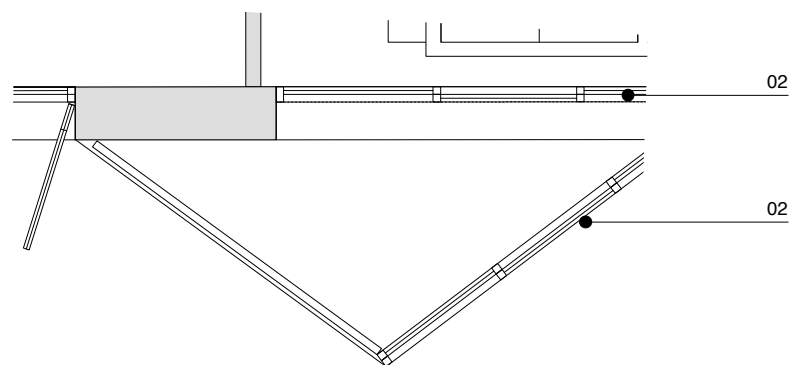
Bay Study 02 - Part Section



Bay Study 02 - Part Elevation



Bay Study 02 - Indicative Section



Bay Study 02 - Part Plan

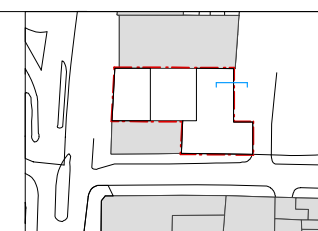
NOTES

- 01 STEEL SECTION BEAM, POWDER COATED TO RAL 7021 (BLACK GREY) OR SIMILAR
- 02 ALUMINIUM COMPOSITE WINDOWS WITH MINIMAL FRAMING, POWDER COATED TO RAL 7021 (BLACK GREY) OR SIMILAR
- 03 CANTILEVERED GLASS BALUSTRADE
- 04 METAL COPING - RAL 7021 (BLACK GREY) OR SIMILAR
- 05 RAINSCREEN CLADDING PANELS ON CARRIER RAIL SYSTEM - RAL 1015 (LIGHT IVORY / CHAMPAGNE) OR SIMILAR
- 06 FULL ALUMINIUM REVEAL TO ALL WINDOW AND DOOR OPENINGS, POWDER COATED TO RAL 7021 (BLACK GREY) OR SIMILAR

- 07 VERTICAL OPAQUE LOUVER FIN FIXED TO FRAME
- 08 LEVEL THRESHOLD TO ALL BALCONIES
- 09 NARROW STRIP TIMBER DECKING TO ALL BALCONIES. SCOTTISH LARCH OR SIMILAR HARDWOOD TBC
- 10 AIR BRICKS FOR WHOLE HOUSE VENTILATION INTAKE / EXTRACT TO MATCH BRICKWORK
- 11 PILE FOUNDATION TO BASEMENT LEVEL
- 12 ALUMINIUM PANEL TEXT SIGNAGE

Revisions		
A	15/01/15	Submitted For Planning Application

Information contained within this drawing is the sole copyright of 21st Architecture Ltd. and is not to be reproduced without express permission. No implied licence exists. This drawing not to be used for land transfer or valuation purposes. Do not scale from this drawing. All dimensions & levels are to be checked on site by the contractor. Issued for purposes indicated only. Drawing errors and omissions to be reported to the architect.



Client
SRE Haverstock Hill Ltd
Project
Marine Ices
Haverstock Hill, London, NW3 2BL

21st Architecture Ltd.
214 Goswell Road,
London,
EC1V 7AF
Tel: +44(0)20 7962 0262
www.21starchitecture.com

Drawing Title
Detailed Section and Elevation

Status
Planning

Scale
1:25@A1_1:50@A3

Drawn
IS

Checked
TJS

Date
Dec 2014

Revision
A

Drwg. No.
177_BS_02