

Image 1
Indicative location of lateral connection



Image 2
Indicative location of lateral connection

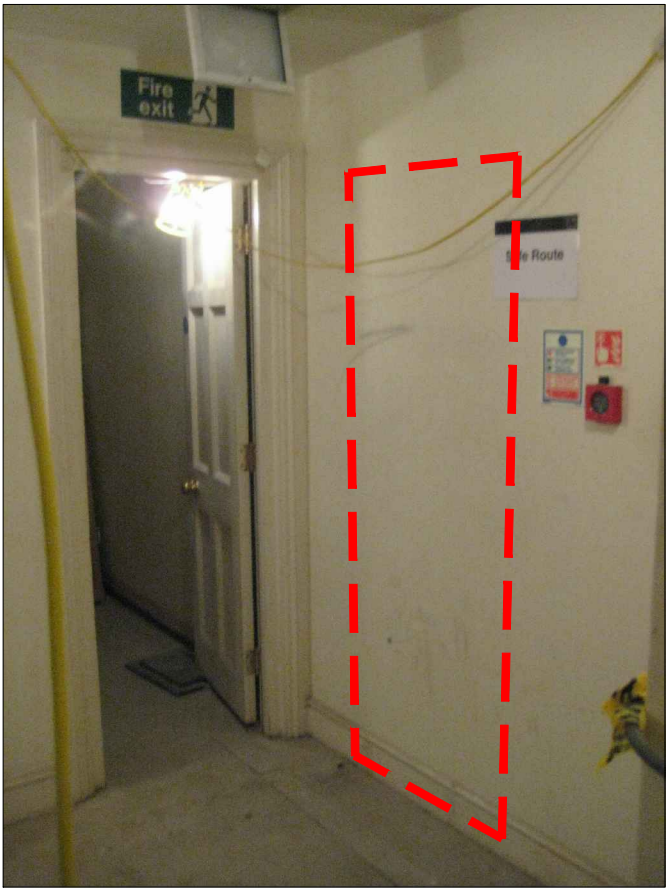
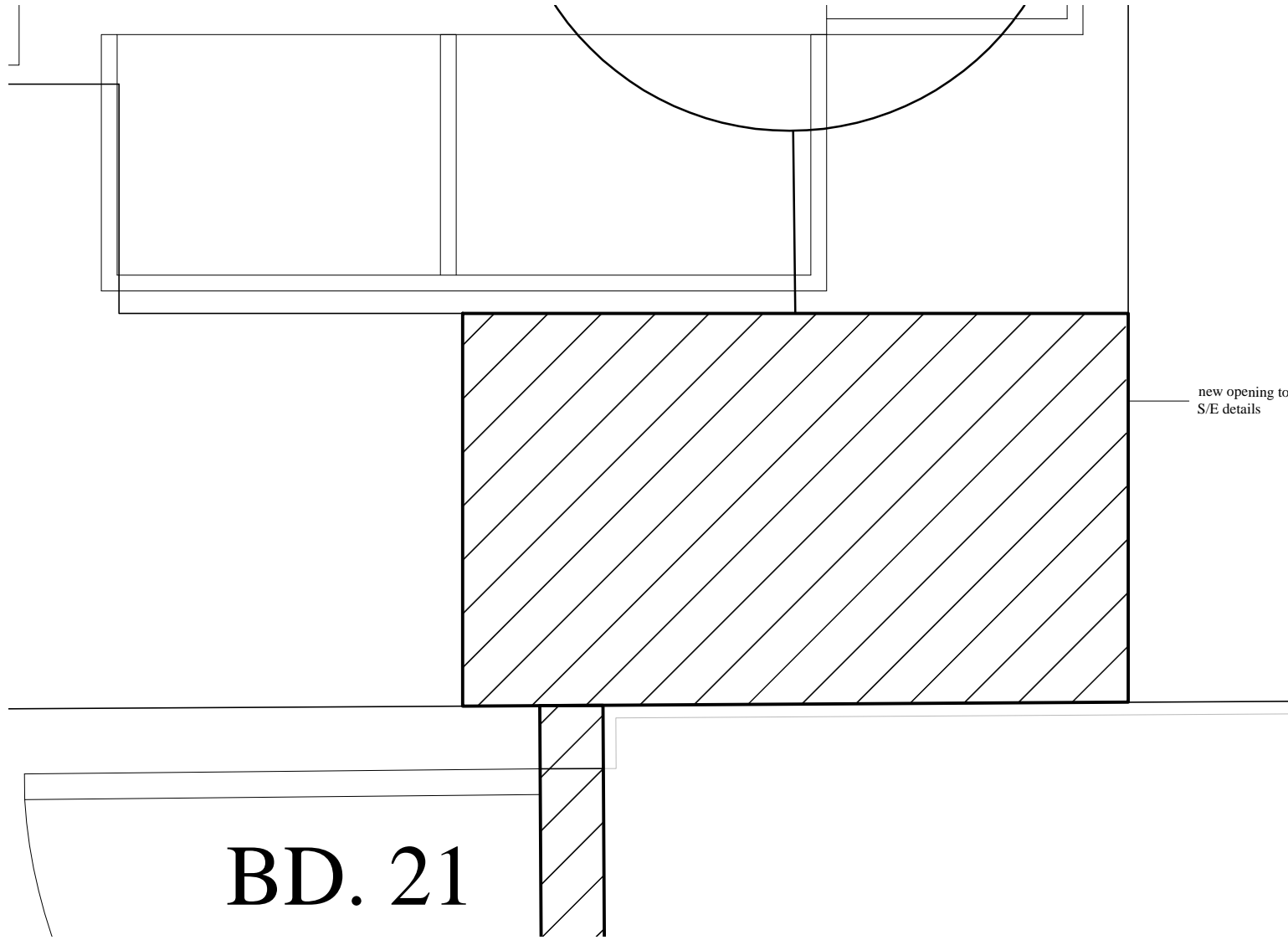
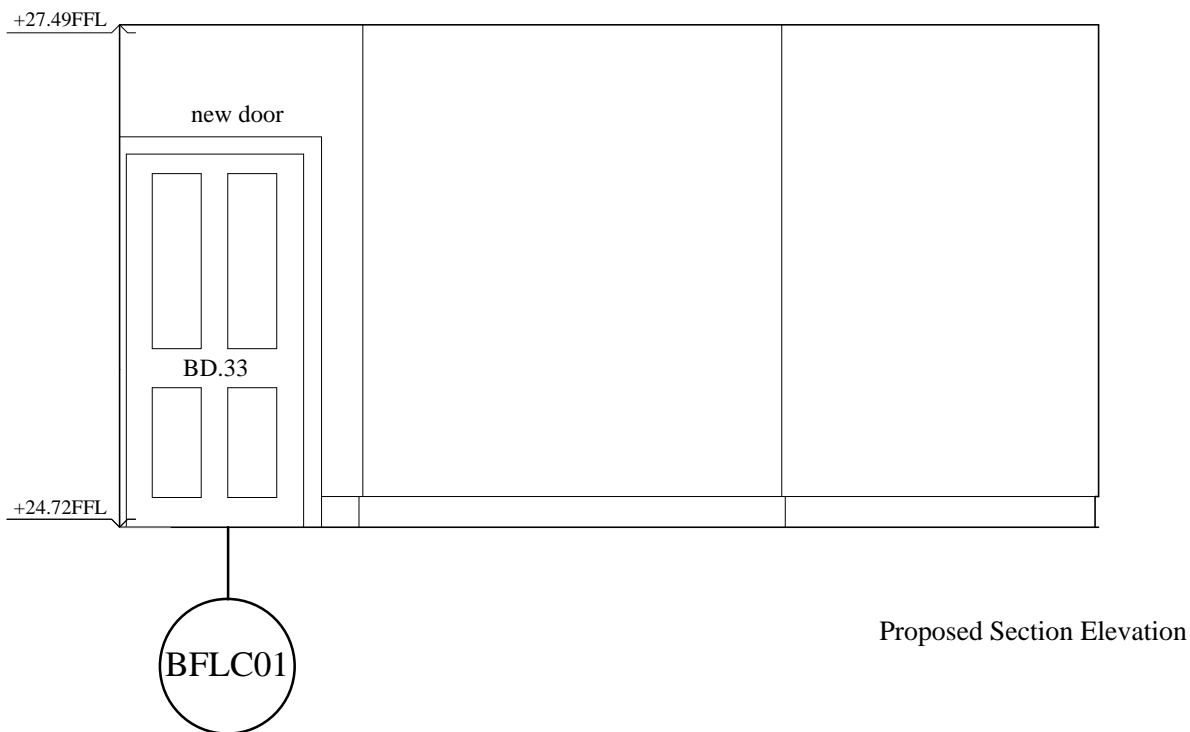
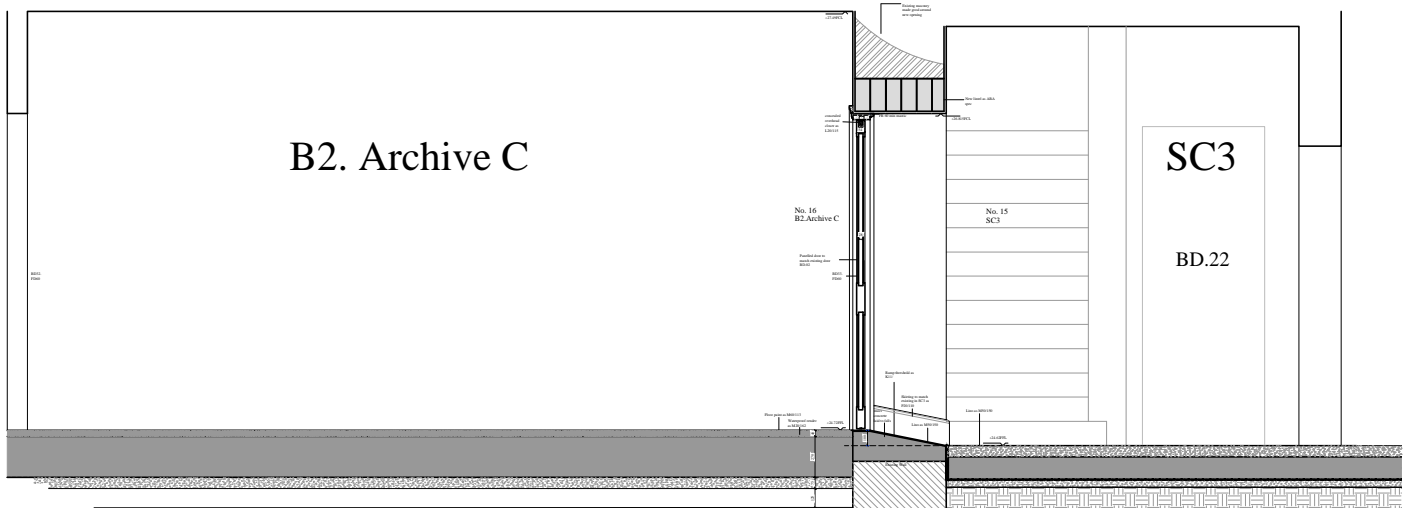
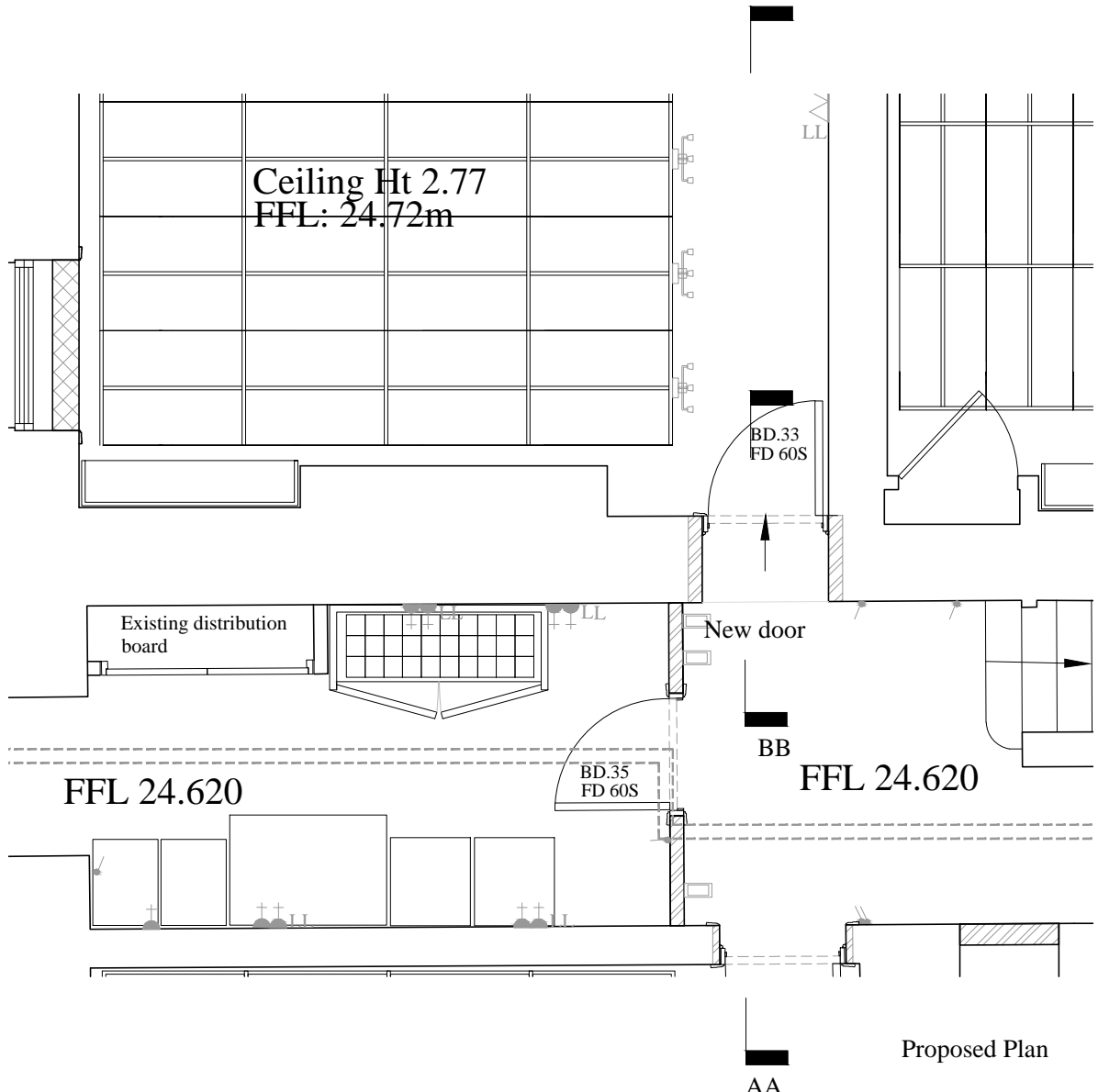
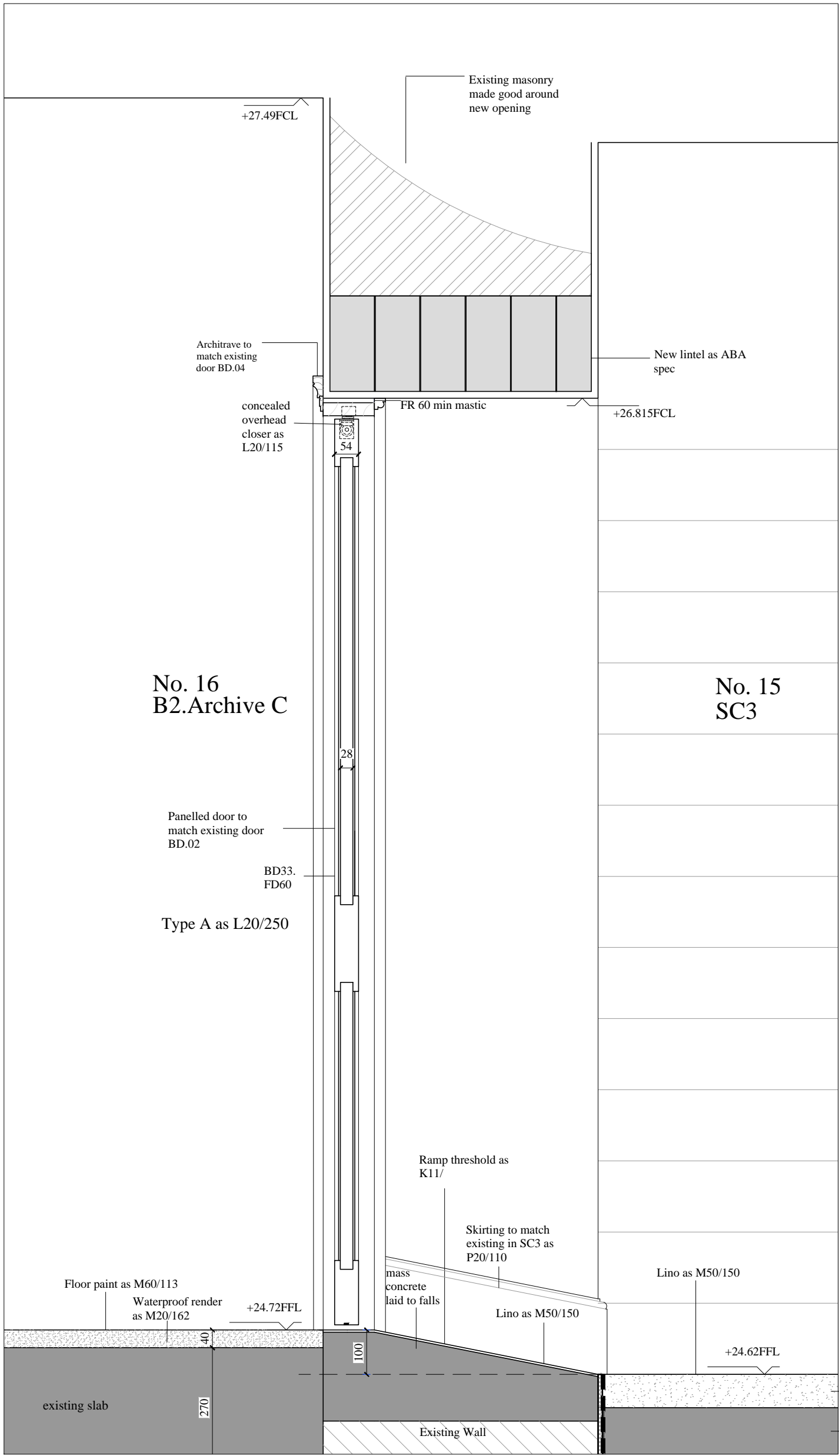


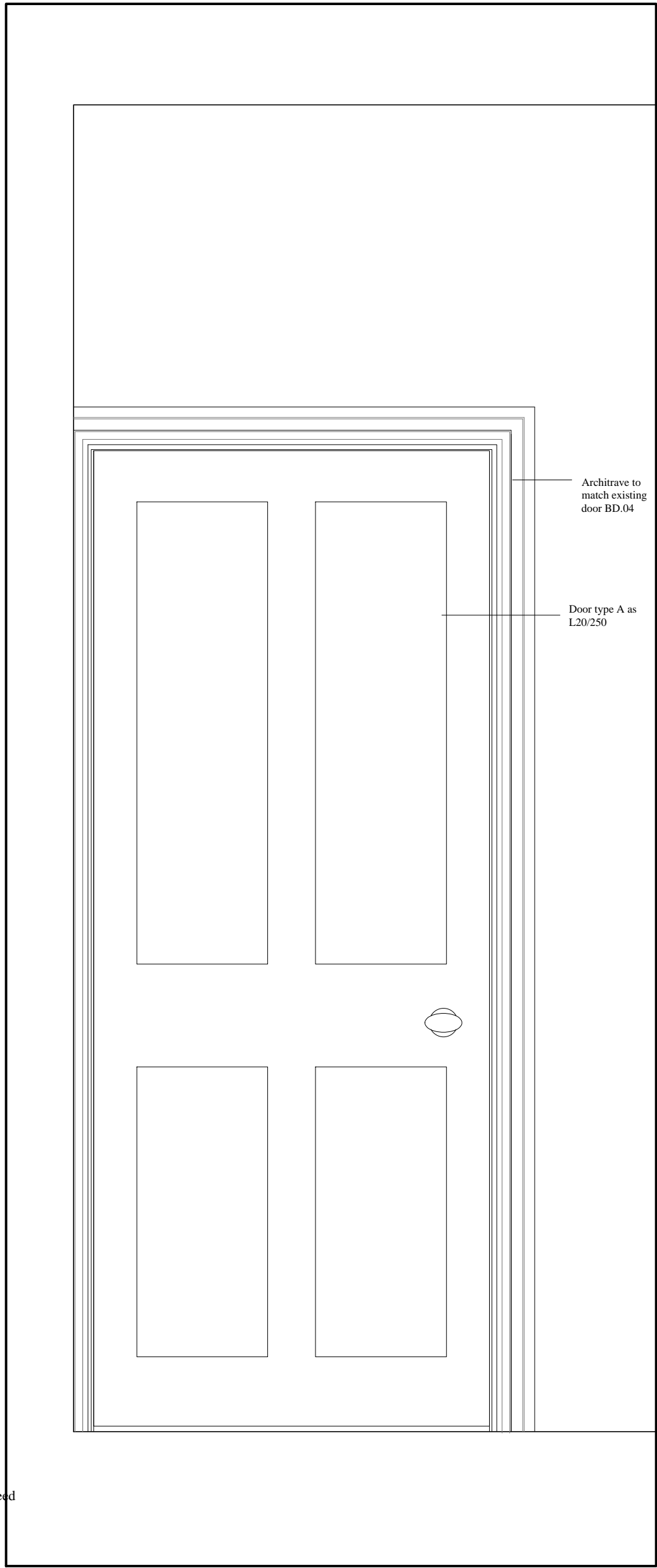
Image 3
Indicative location of lateral connection



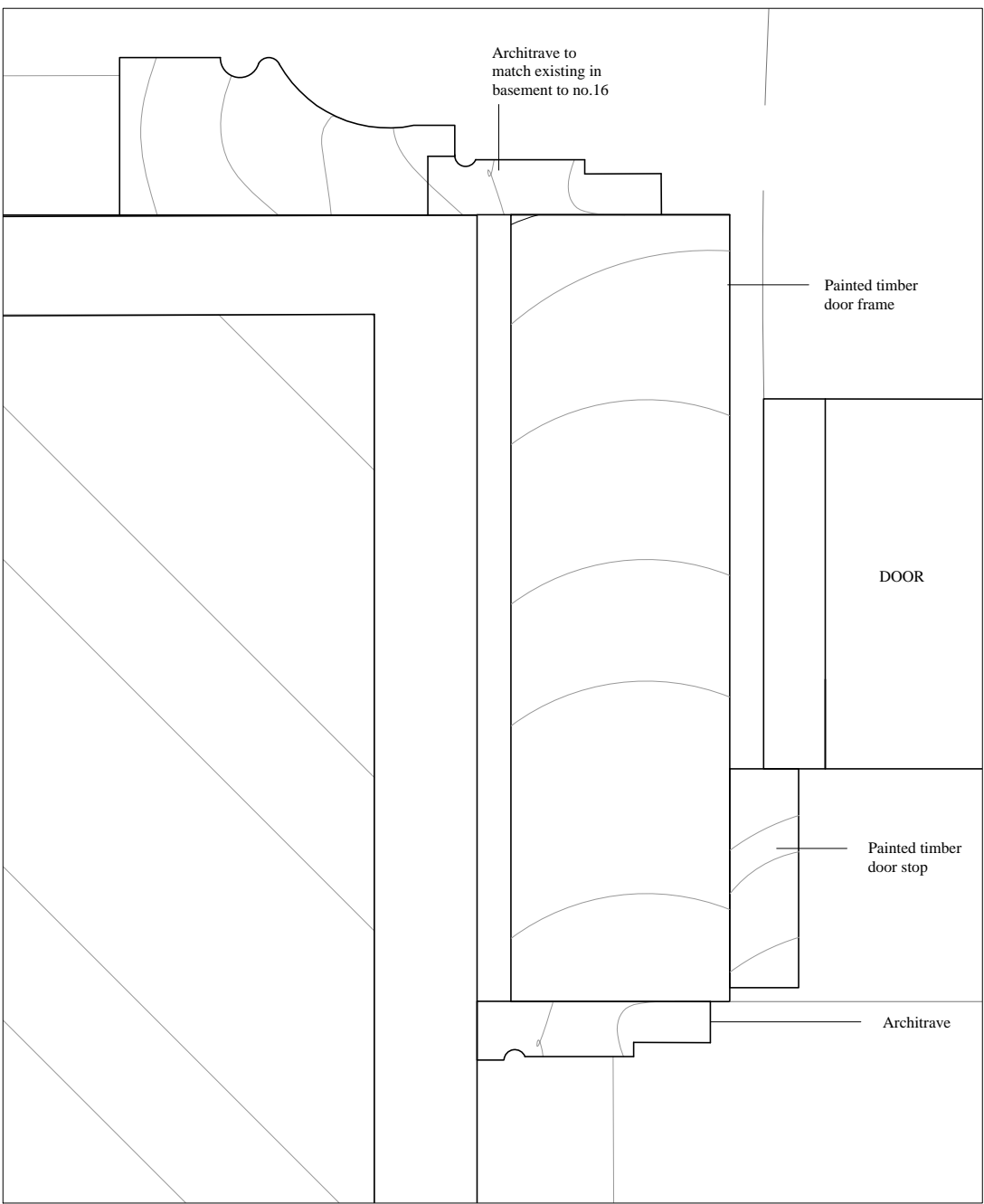
Demolition BFLC01



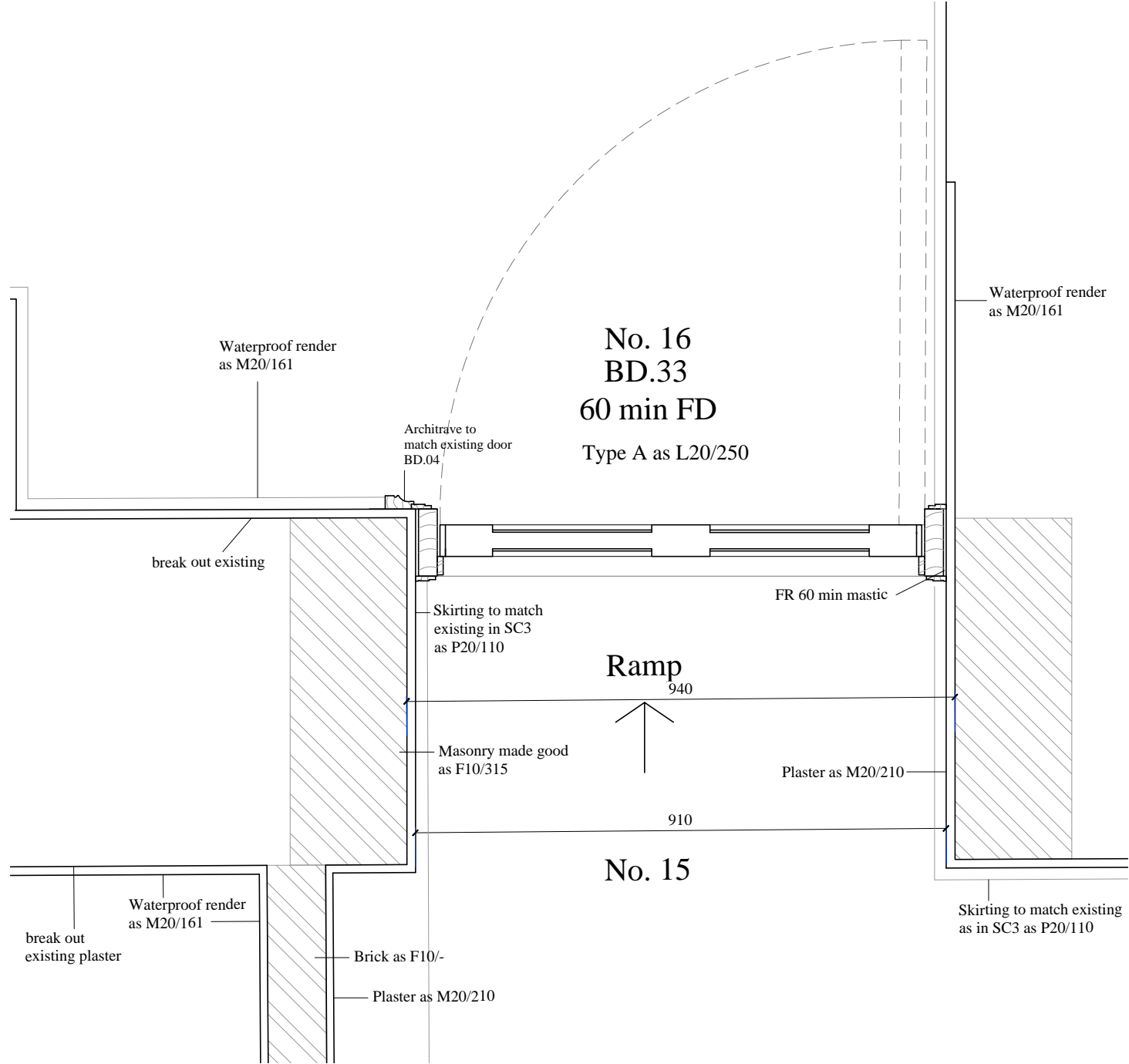
Proposed Section B-B



Proposed Elevation [No.16]



Proposed 1-1 architrave detail



Proposed BFLC01

NOTES:

REVISIONS:
- 28.08.14 Coordination
A. 26.11.14 Tender
B. 21.01.15 Planning Conditions

THE PAUL MELLON CENTRE

LATERAL CONNECTION DETAIL
BASEMENT FLOOR

DRAWING NO:

730B

SCALE:
1.50 @ A1

DATE:
21.01.15

WRIGHT & WRIGHT ARCHITECTS

89/91 Bayham Street
London NW1 0AG
TEL 020 7428 9393
FAX 020 7428 9394
www.wrightandwright.co.uk