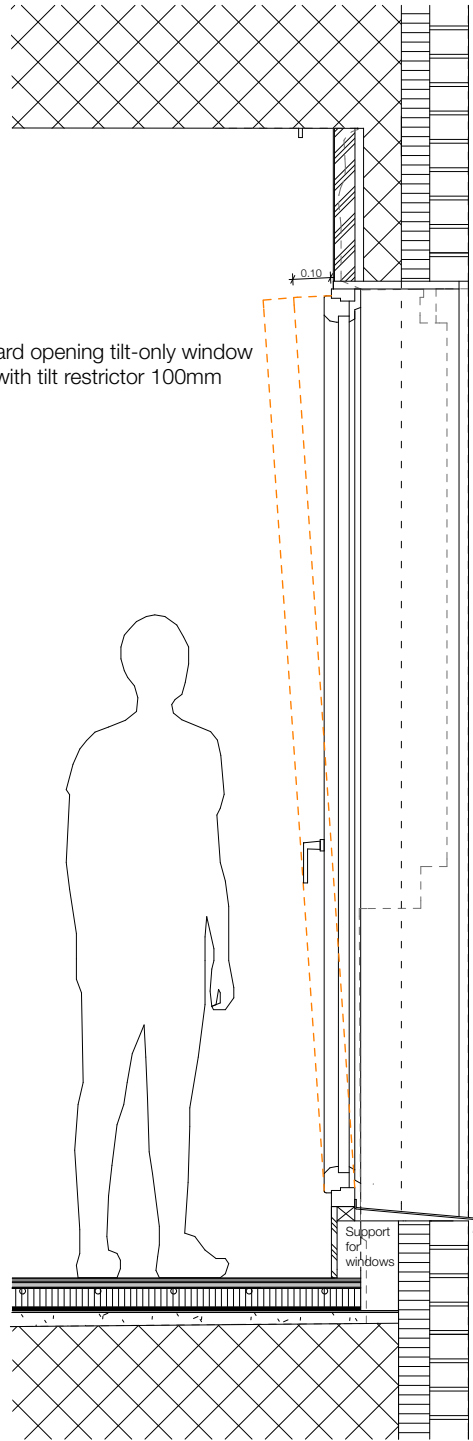


Inward opening tilt-only window  
with tilt restrictor 100mm

Section A through tilt-only window at  
outer face of wall

South elevation



Inward opening tilt-only window  
with tilt restrictor 100mm

Section B through tilt-only window at  
inner face of wall

South elevation

<p><b>EMILY GREEVES ARCHITECTS</b></p>	<p>180 Albany Street</p>	Drawing Name		
		Section tilt-only window - South elevation		
		Drawing Number		Date
A31/11		1:20 @ A4		
Drawing Status		Date	Revision	
Planning		04.02.15	/	