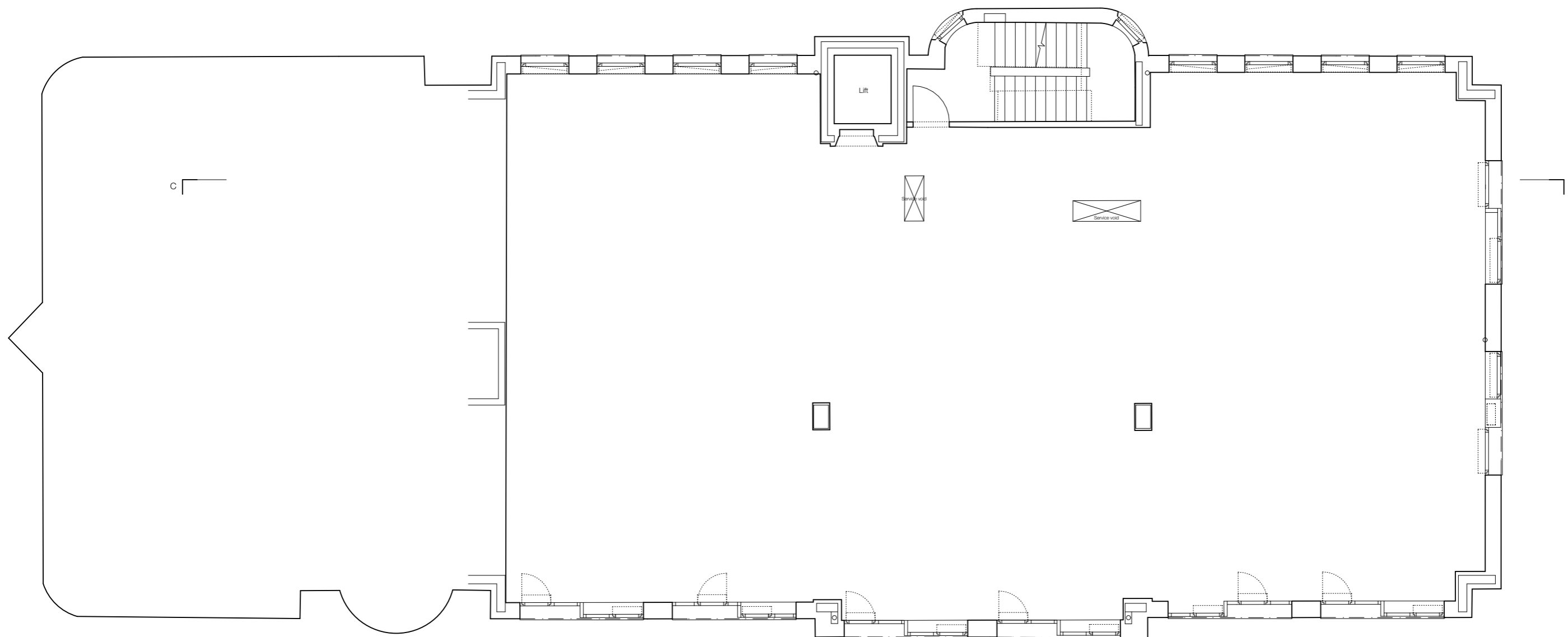


18275.00DW



**EMILY  
GREEVES  
ARCHITECTS**

Emily Greeves Architects  
101-103 Heath Street  
London NW3 6SS  
  
www.emilygreeves.com  
mail@emilygreeves.com  
+44 (0)7830 342388

Please note:  
1. All dimensions to be checked on site before fabrication.  
2. Contractor to refer to engineer's drawings before construction.  
3. Samples to be provided by contractor for EGA approval.  
4. All finishes to EGA satisfaction.  
5. All drawings to be approved by EGA before construction.  
6. All drawings and designs are covered by Design Right (Intellectual Property) and may not be distributed, copied or issued without written permission of EGA.  
7. All design concepts are the sole property of EGA and no adaptations, reproductions or copies may be made without written permission of EGA.

Revisions

180 Albany Street

Drawing Name		
Proposed Second Floor Plan		
Drawing Number		1:100 @ A3
L12/03_Rev A		
Drawing Status	Date	Revision
Planning	04.02.15	A