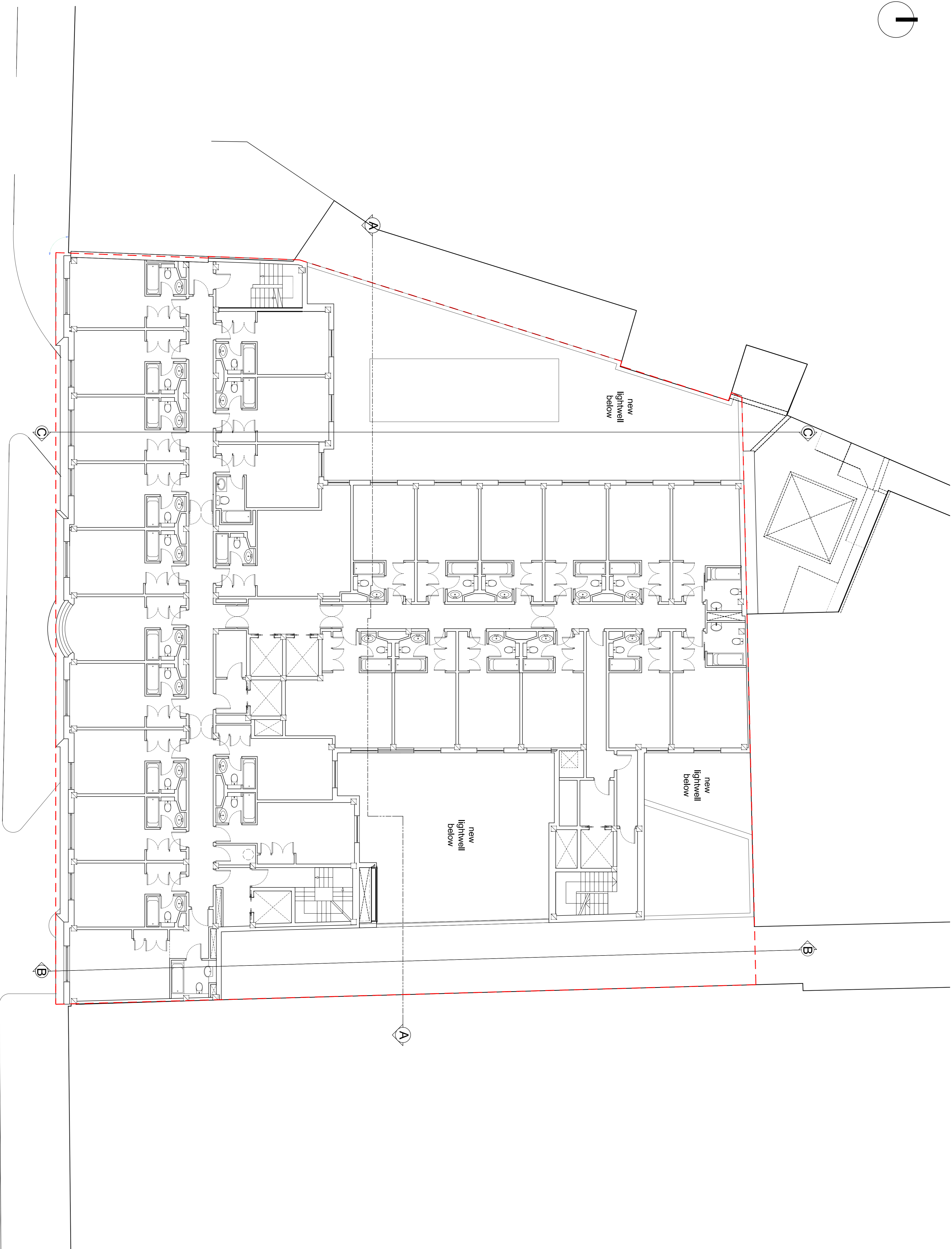


Copyright: All Rights reserved. This drawing must not be reproduced without permission. Only the original drawings should be relied upon. Contractors, subcontractors and suppliers must verify all dimensions on site before commencing any work or making any other drawings. All drawings to be submitted to the architect must be designed for common paper to facilitate printing. This drawing is to be used in conjunction with the architect's tender conditions of sale, bill of quantities, schedule of materials, structural, mechanical & electrical drawings and other drawings with which it is related. The architect's tender conditions of sale apply to this drawing. Dimensions are in millimetres unless otherwise stated. Do not scale from this drawing. Dimensions are in millimetres unless otherwise stated.

NOTES

--- Site Boundary



Second floor as Proposed
Scale 1:100



rev	amendments	date	by
P1	Issued for Planning	28.01.15	PW

dexter associates
architects
57/4 jamstown road
london nw1 7db
uk
t: 020 7267 4440
f: 020 7267 0944
www.dexterassociates.com
info@dexterassociates.com

project
Kingsway Hall Hotel

client
Kingsway Hall Hotel

drawing title
Second Floor as Proposed

drawing status
PLANNING

scale	date	drawn by	checked by
1:100 @ A1	13.01.15	PW	WV
1:200 @ A3			
job no.	drawing no.	revision	
1146	A 100 005	P1	