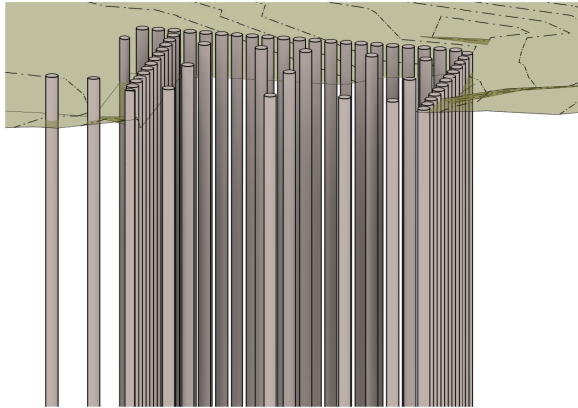


This drawing is to be read in conjunction with all relevant architects, engineers and specialists drawings and specifications.

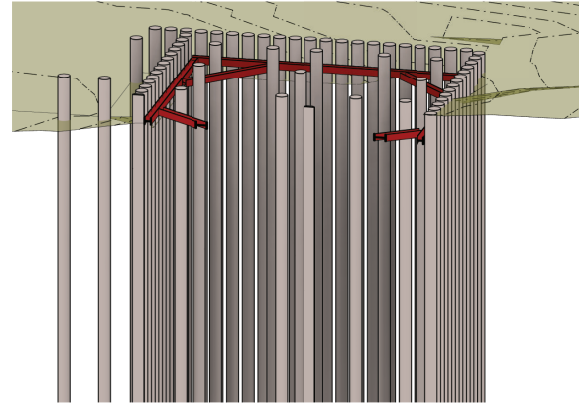
Do not scale from this drawing.

NOT ALL INTERNAL COLUMNS AND WALLS SHOWN FOR CLARITY



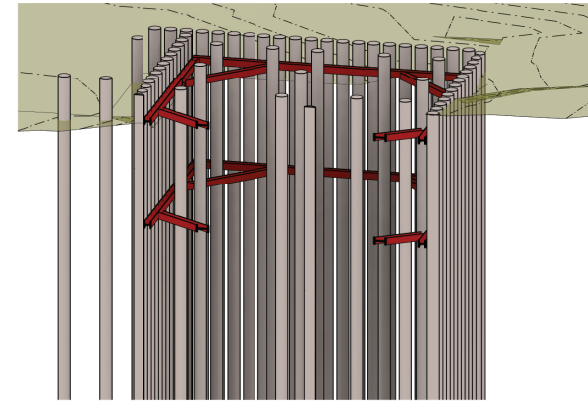
VIEW 2 - PHASE 1

- DEMOLISH EXISTING BUILDING
- INSTALL CONTIGUOUS PILES AND PILES TO SUPPORT VERTICAL LOAD FROM GROUND LEVEL



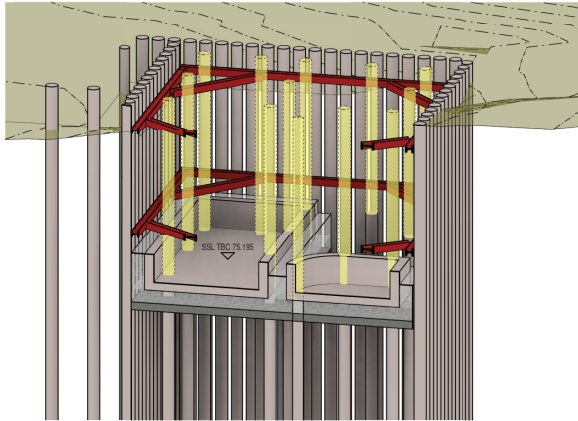
VIEW 2 - PHASE 2

- EXCAVATE TO APPROX LEVEL 80.520 (MAX 2m DEEP EXCAVATION)
- INSTALL WALING BEAM APPROX LEVEL 81.128
- EXCAVATE TEMPORARY SUMPS WITHIN EXCAVATION AND PROVIDE SUBMERSIBLE PUMPS



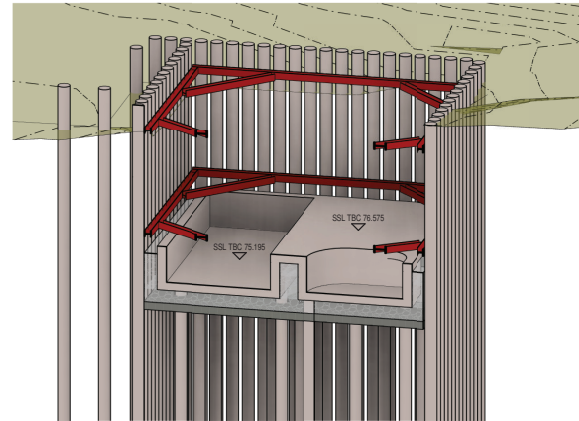
VIEW 2 - PHASE 3

- EXCAVATE TO APPROX 76.900
- INSTALL WALING BEAM APPROX LEVEL 77.100
- EXCAVATE TEMPORARY SUMPS WITHIN EXCAVATION AND PROVIDE SUBMERSIBLE PUMPS



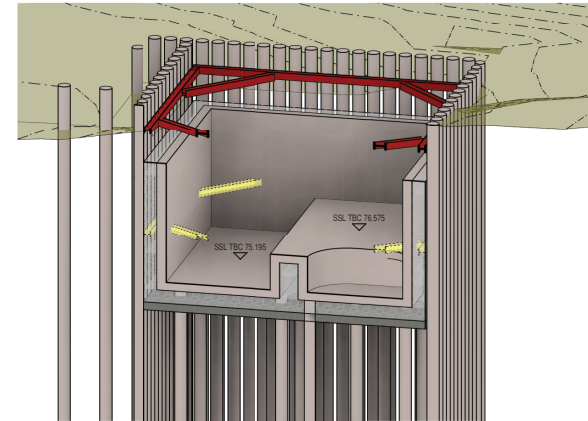
VIEW 2 - PHASE 4

- EXCAVATE TO BASEMENT / POOL / LIFT PIT FORMATION LEVEL
- CUT DOWN PILE TO REQUIRED LEVELS
- RAKE BACK GROUND LOCALLY TO ALLOW FOR LOWER BASEMENT LEVEL EXCAVATION
- INSTALL CELLCORE AND FREE DRAINING MATERIAL UNDER POOL, SPA AND LIFT PIT
- CAST LOWER LEVEL BASEMENT SLABS AND UPSTANDS FOR THE ABOVE
- INSTALL FREE DRAINAGE MATERIAL IN BETWEEN CONTIGUOUS PILED WALL AND UPSTAND WALLS



VIEW 2 - PHASE 5

- INSTALL CELLCORE AND FREE DRAINING MATERIAL UNDER MAIN BASEMENT AREA
- CAST MAIN BASEMENT SLAB



VIEW 2 - PHASE 6

- REMOVE LOW LEVEL WALING BEAM ONCE BASEMENT SLABS AND LOWER LEVEL WALLS HAVE GAINED SUFFICIENT STRENGTH
- CAST BASEMENT WALLS UP TO LOWER GROUND FLOOR LEVEL
- INSTALL FREE DRAINAGE MATERIAL IN BETWEEN CONTIGUOUS PILED WALL AND BASEMENT WALLS

PD	08.12.14	BMC	GP	Issued for Planning
P1	25.11.14	BMC	GP	Issued for Planning
rev	date	by	chk	description

elliottwood

Elliott Wood Partnership LLP, 241 The Broadway, London SW19 1SD  
 Consulting Structural and Civil Engineers, www.elliottwood.co.uk  
 tel: 020 8544 0033, fax: 020 8544 0066, info@elliottwood.co.uk

project  
 53 Fitzroy Park

drawing title  
 Construction Sequence - 3D -  
 Sheet 1

scale (s)	date	drawn
NTS	Oct 2014	BMC

project no. 213513		drawing status. Preliminary			
originator	zone	level	role	dig no.	revision
EW	00	ZZZ	S	4100	P2