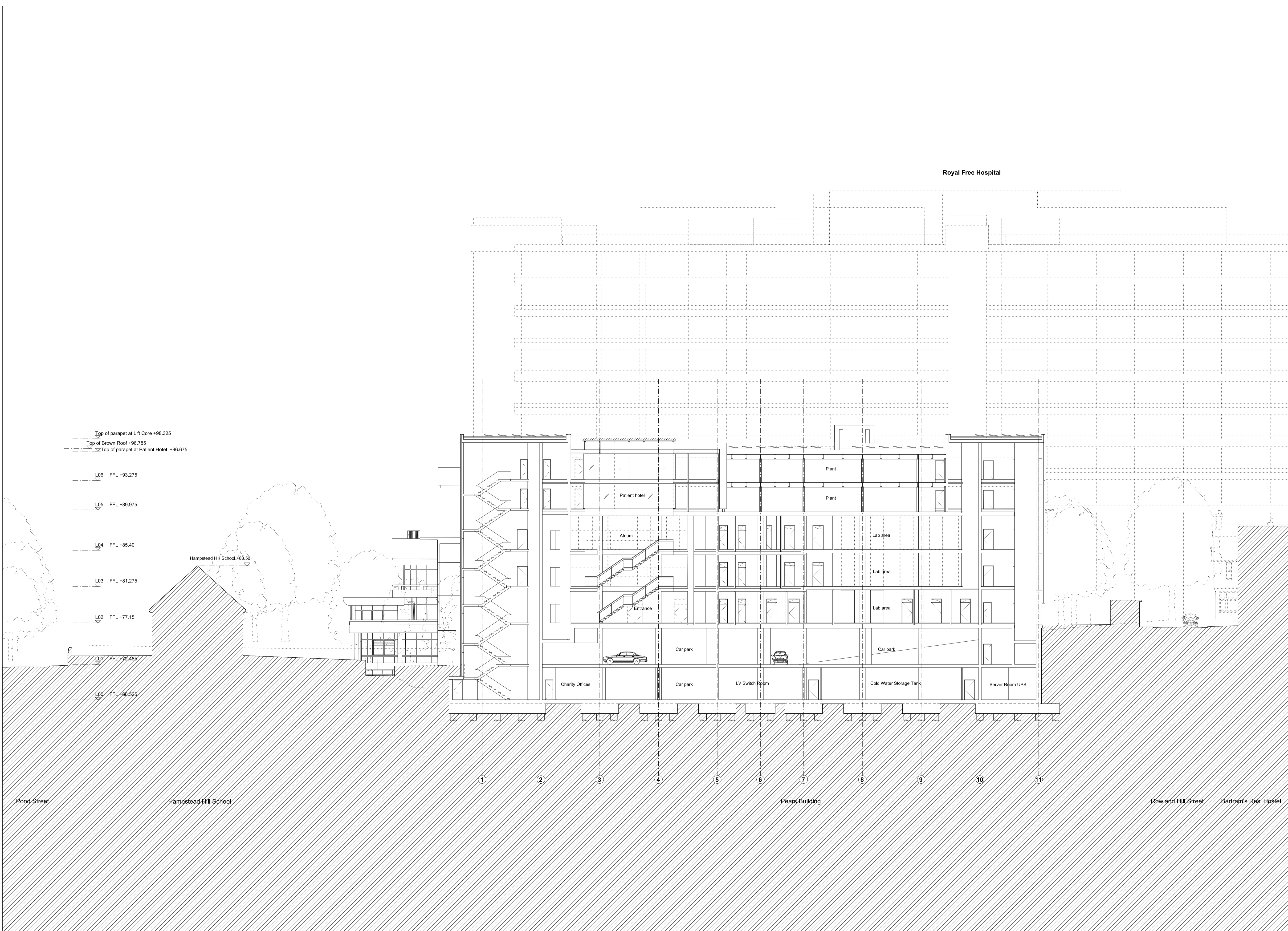
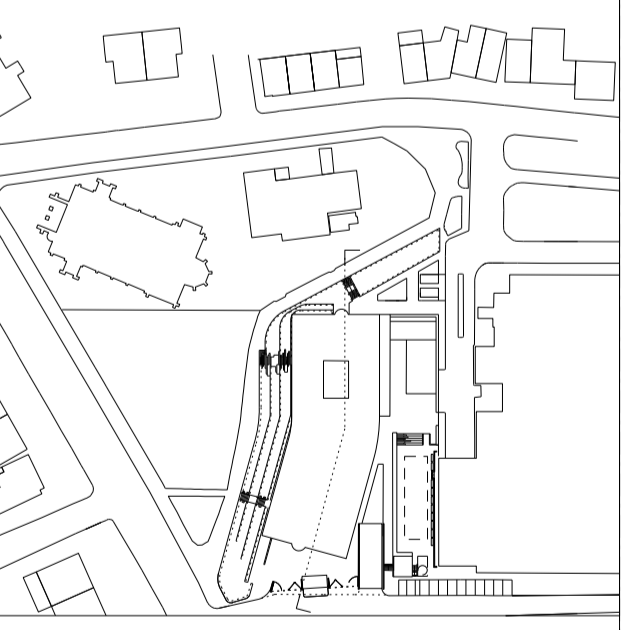


Royal Free Hospital

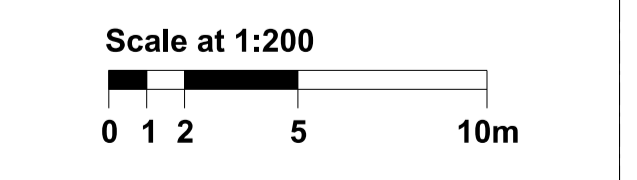


- Top of parapet at Lift Core +98.325
- Top of Brown Roof +96.785
- Top of parapet at Patient Hotel +96.875
- L06 FFL +93.275
- L05 FFL +89.975
- L04 FFL +85.40
- L03 FFL +81.275
- L02 FFL +77.15
- L01 FFL +72.485
- L00 FFL +68.525

- General Notes:**
- G0 Site Address: Royal Free Hospital, Pond Street, NW3 2QG
 - G1 For Site and Grid setting out refer to HAP Setting Out drawing Dwg No tbc.
 - G2 All dimensions to be checked on site.
 - G3 Any discrepancies between drawings to be reported to the Architect immediately.
 - G4 All Levels are above ordnance datum (AOD)
New Levels are shown thus: +20.345
Existing Levels are shown thus: EX+20.345
Retained Existing Levels: EX+20.345
 - G5 Use figured dimensions only. Do not scale from drawings. IF IN DOUBT, ASK.
 - G6 Refer to Structural Engineers drawings for all structural and services information.
 - G7 Refer to Abell Nepp drawings and specifications for setting out and details of equipment and furniture layouts, including locations and sizes of all sinks, wash-hand basins and risers.
 - G8 Refer to relevant specialist consultants for design relating to Access, Fire, Acoustics, Lighting, BREEM, Equipment and Commissioning
 - G9 Refer to Landscape Architects drawings and specifications for landscaping information.
 - G10 For tolerances see the Design Drawings and Specifications
 - G11 This drawing is indicative of the visual & performance requirements only. The Contractor is responsible for the detailed design and co-ordination of the installation within the parameters defined in the specification, design drawings, contract terms and contract documents.
 - G12 Room numbers are shown thus: 115
 - G13 Door(D) & Window (W) References are shown thus: D1
 - G14 Clear height is shown thus (finished floor to finished soffit) 2750
 - G15 System Reference Sheet (SRS) Codes show thus BWS-01
 - G16 Finishes are shown thus: FIN
 - G17 Setting Out Points shown thus: SCP
 - G18 Refer to A. RFMR 9800 for SRS Codes and Architectural Specification



Section Key Plan



Work Package	Cost Check	Info/Briefing	Tender	Contract	Construction

Date	Rev.	Description	Approved By

Date	Rev.	Description	Approved By
03.10.2014	A	For Planning Application Client Sign-Off	EF
23.10.2014	B	Submitted for Planning	EF
04.02.2015	C	Amendments to roof apparatus	EF

Project	Pears Building
Subject	Long Section Section A-A
Architects	Hopkins Architects Partnership LLP 27 Broadley Terrace, London, NW1 6LG T: 020 7724 1751 E: mail@hopkins.co.uk

Sort Code	Drawing Number	Rev.
A/RFMR	2200	C
Date	03.10.2014	Scale 1:200 at A1