

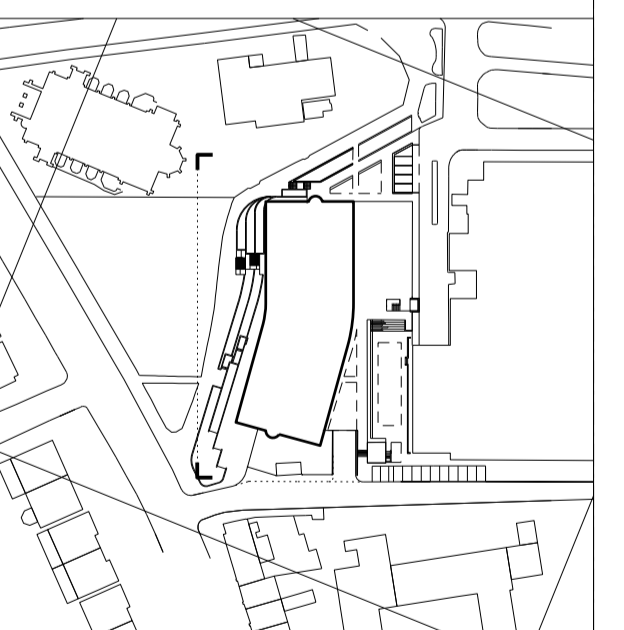
Royal Free Hospital

General Notes:

- G0 Site Address: Royal Free Hospital, Pond Street, NW3 2QG
- G1 For Site and Grid setting out refer to HAP Setting Out drawing Dwg No tbc.
- G2 All dimensions to be checked on site.
- G3 Any discrepancies between drawings to be reported to the Architect immediately.
- G4 All Levels are above ordnance datum (AOD)
New Levels are shown thus: +20.345
Existing Levels are shown thus: EX+20.345
Retained Existing Levels: EX+20.345
- G5 Use figured dimensions only. Do not scale from drawings. IF IN DOUBT, ASK.
- G6 Refer to Structural Engineers drawings for all structural and services information.
- G7 Refer to Abell Napp drawings and specifications for setting out and details of equipment and furniture layouts, including locations and sizes of all sinks, wash-hand basins and risers.
- G8 Refer to relevant specialist consultants for design relating to Access, Fire, Acoustics, Lighting, BREEM, Equipment and Commissioning.
- G9 Refer to Landscape Architects drawings and specifications for landscaping information.
- G10 For tolerances see the Design Drawings and Specifications.
- G11 This drawing is indicative of the visual & performance requirements only. The Contractor is responsible for the detailed design and co-ordination of the installation within the parameters defined in the specification, design drawings, contract terms and contract documents.
- G12 Room numbers are shown thus: 115
- G13 Door(D) & Window (W) References are shown thus: D1 W1
- G14 Clear height is shown thus: 2750 (finished floor to finished soffit)
- G15 System Reference Sheet (SRS) Codes shown thus: BWS-01
- G16 Finishes are shown thus: FIN
- G17 Setting Out Points shown thus: SCP
- G18 Refer to A. RFMR 9800 for SRS Codes and Architectural Specification.

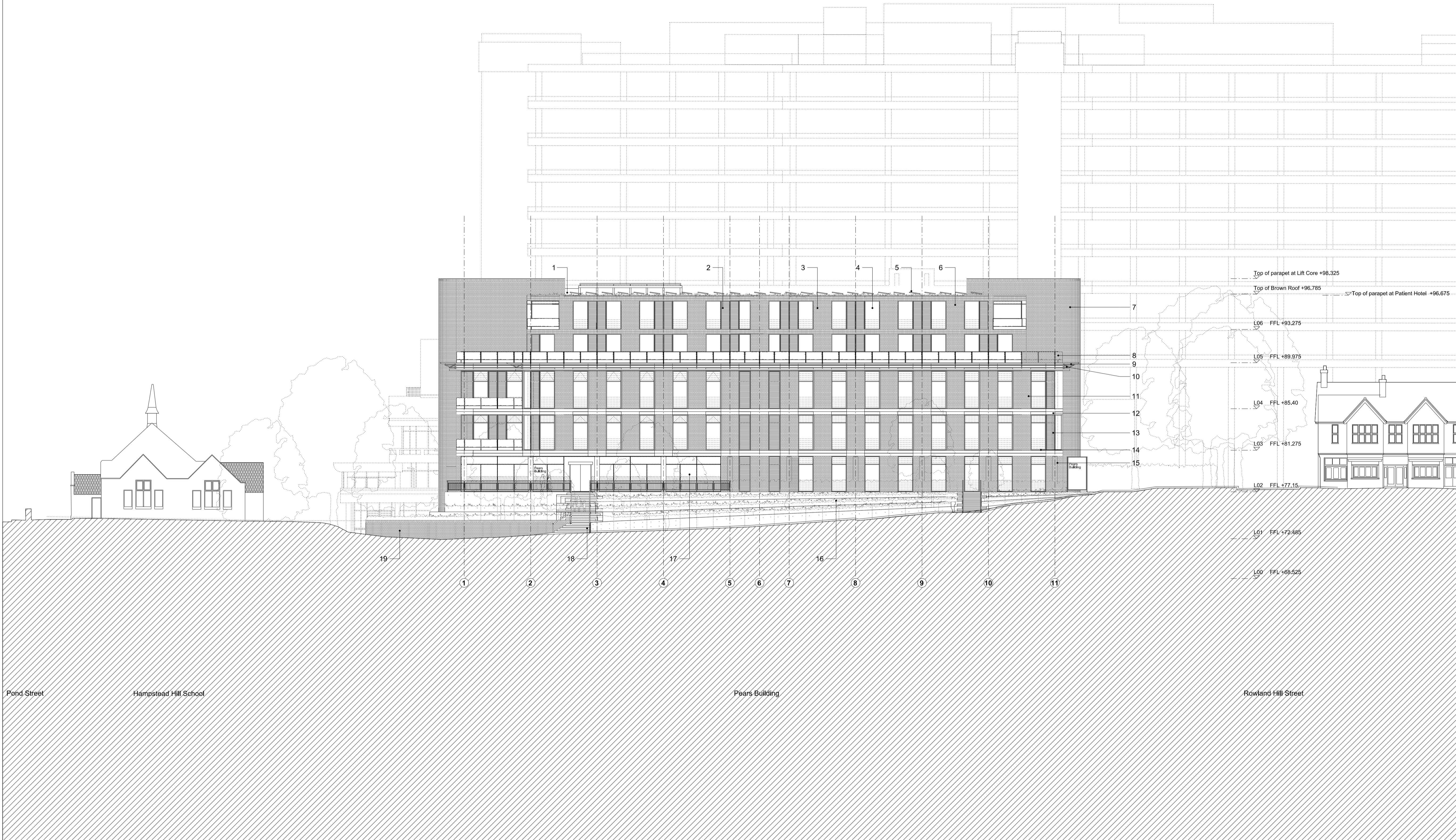
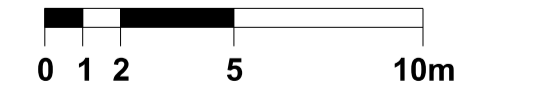
KEY

- 1 Brown Roof
- 2 Timber louvres over glazing
- 3 Brickwork panel
- 4 Fritted glazed panel
- 5 PV panels
- 6 Painted metal rwp
- 7 Brickwork to staircase/ lift enclosure
- 8 Hedge in planter
- 9 Horizontal timber louvres
- 10 Facade Monorail
- 11 Brickwork panel
- 12 Precast concrete panel
- 13 Vertical timber louvres over glazing
- 14 Fritted glazed panel
- 15 Fairfaced RC column
- 16 Fairfaced RC retaining wall
- 17 Glazing to Cafe area
- 18 Stairs to entrance
- 19 Brick wall
- 20 PPC Metal Weather Louvres to Car Park
- 21 Louvered Screen to Roof Top Plant
- 22 Glazing to Seminar Room
- 23 Timber Fencing to Loading Bay
- 24 Glazing to Charity Offices



Elevation Key Plan

Scale at 1:200



Work Package	Cost Check	Info/Briefing	Tender	Contract	Construction

Date	Rev.	Description	Approved By

Date	Rev.	Description	Approved By
03.10.2014	A	For Planning Application Client Sign-Off	EF
17.10.2014	B	Update for Planning Application Client Sign-Off	EF
27.10.2014	C	Submitted for Planning	EF
08.12.2014	D	Issued for Information	EF
22.12.2014	E	Minor Design Development	EF
04.02.2015	F	Amendments to roof apparatus	EF

Project	Pears Building
Subject	Proposed West Elevation
Architects	Hopkins Architects Partnership LLP 27 Broadley Terrace, London, NW1 6LG T: 020 7724 1751 E: mail@hopkins.co.uk

Sort Code	Drawing Number	Rev.
A/RFMR	2101	F
Date	03.10.2014	Scale 1:200 at A1