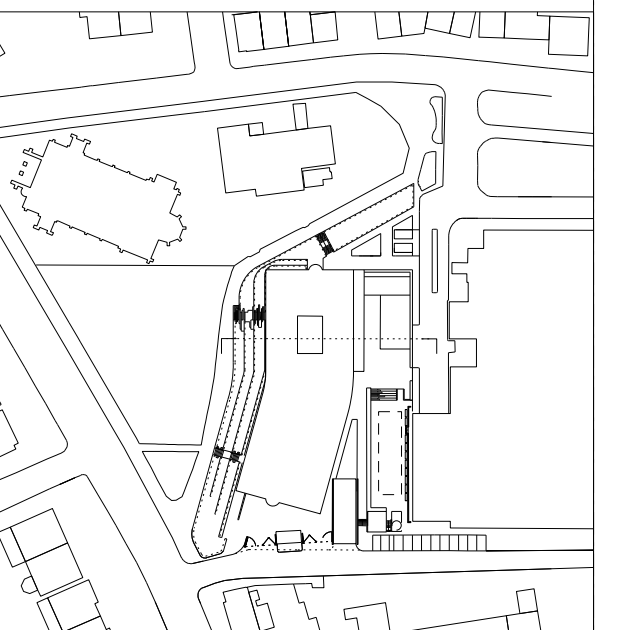
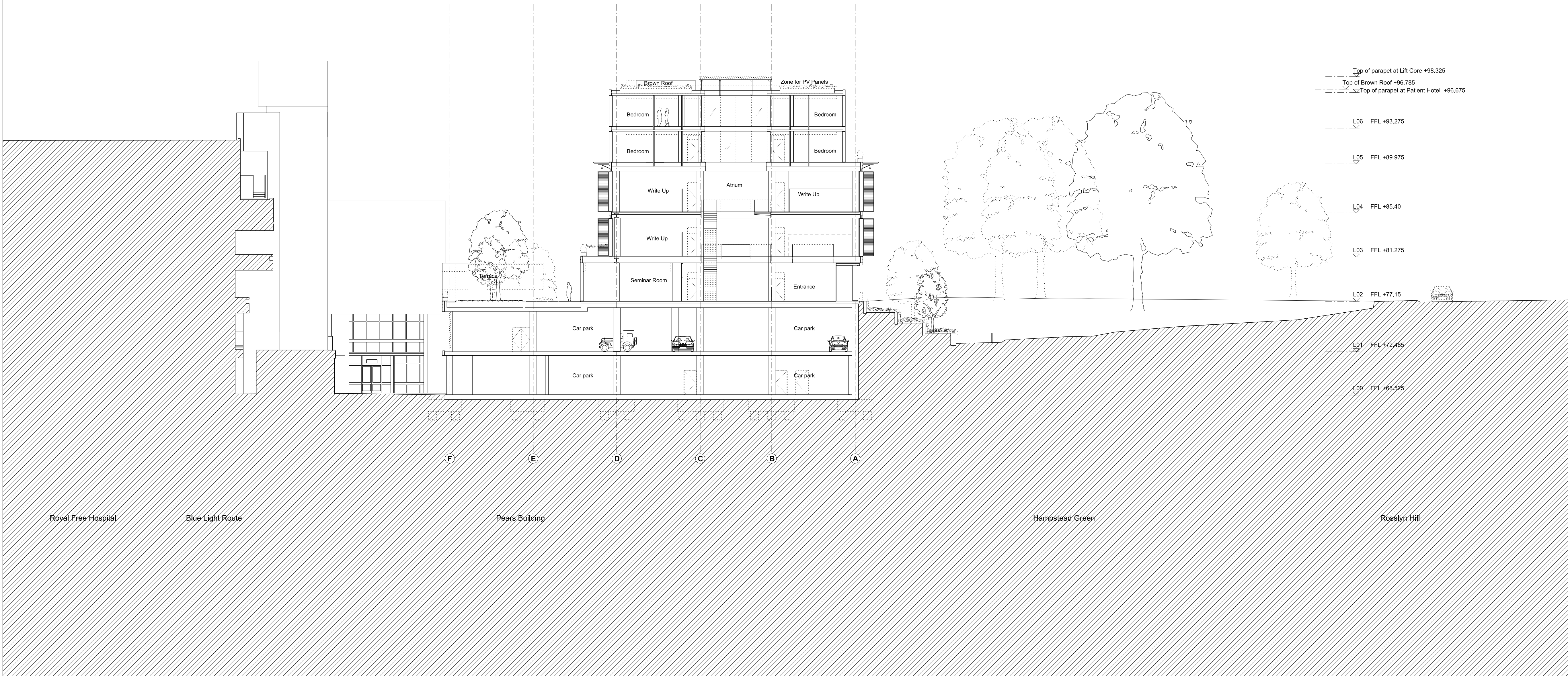
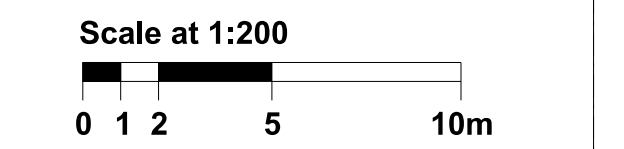


General Notes:

- G0 Site Address: Royal Free Hospital, Pond Street, NW3 2QG
- G1 For Site and Grid setting out refer to HAP Setting Out drawing Dwg No tbc.
- G2 All dimensions to be checked on site.
- G3 Any discrepancies between drawings to be reported to the Architect immediately.
- G4 All Levels are above ordnance datum (AOD)
New Levels are shown thus: +20.345
Existing Levels are shown thus: EX+20.345
Retained Existing Levels: EX+20.345
- G5 Use figured dimensions only. Do not scale from drawings. IF IN DOUBT, ASK.
- G6 Refer to Structural Engineers drawings for all structural and services information.
- G7 Refer to Abell Nepp drawings and specifications for setting out and details of equipment and furniture layouts, including locations and sizes of all sinks, wash-hand basins and risers.
- G8 Refer to relevant specialist consultants for design relating to Access, Fire, Acoustics, Lighting, BREEAM, Equipment and Commissioning.
- G9 Refer to Landscape Architects drawings and specifications for landscaping information.
- G10 For tolerances see the Design Drawings and Specifications.
- G11 This drawing is indicative of the visual & performance requirements only. The Contractor is responsible for the detailed design and co-ordination of the installation within the parameters defined in the specification, design drawings, contract terms and contract documents.
- G12 Room numbers are shown thus: 115
- G13 Door(D) & Window (W) References are shown thus: D1 W1
- G14 Clear height is shown thus (finished floor to finished soffit) 2750
- G15 System Reference Sheet (SRS) Codes shown thus: BVS-01
- G16 Finishes are shown thus: FIN
- G17 Setting Out Points shown thus: SOP
- G18 Refer to A. RFMR 9800 for SRS Codes and Architectural Specification



Section Key Plan



| Work Package | Cost Check | Info/Briefing | Tender | Contract | Construction |
|--------------|------------|---------------|--------|----------|--------------|
| | | | | | |
| | | | | | |
| | | | | | |
| | | | | | |
| | | | | | |

| Date | Rev. | Description | Approved By |
|------|------|-------------|-------------|
| | | | |
| | | | |
| | | | |
| | | | |

| Date | Rev. | Description | Approved By |
|------------|------|--|-------------|
| 03.10.2014 | A | For Planning Application Client Sign-Off | EF |
| 27.10.2014 | B | Submitted for Planning | EF |
| 04.02.2015 | C | Amendments to roof apparatus | EF |
| | | | |
| | | | |

| | |
|------------|--|
| Project | Pears Building |
| Subject | Cross Section Section C-C |
| Architects | Hopkins Architects Partnership LLP 27 Broadley Terrace, London, NW1 6LG T: 020 7724 1751 E: mail@hopkins.co.uk |

| | | |
|-----------|----------------|-------------------|
| Sort Code | Drawing Number | Rev. |
| A/RFMR | 2202 | C |
| Date | 03.10.2014 | Scale 1:200 at A1 |