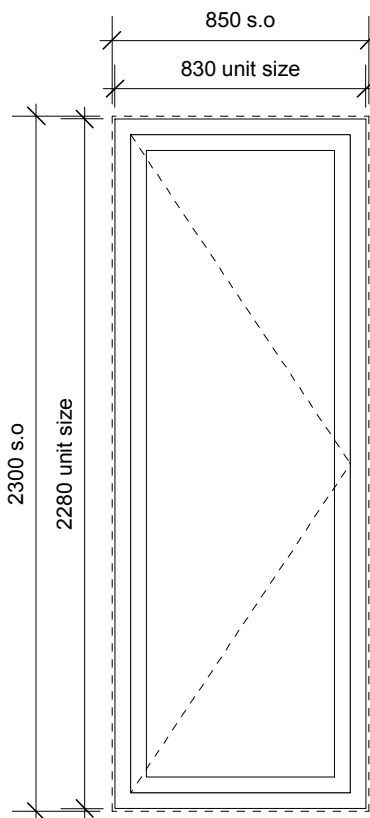


This drawing is the copyright of Axiom Architects.

The contractor is to check all site dimensions and levels before work starts. Do not scale from drawings. Notify the architect of any discrepancies. This drawing must be read with and checked against all structural and other specialist drawings, specification and bills of quantities. Notify the architect of any discrepancies. The contractor is to comply with all current British Standards and Building Regulations whether or not specifically stated on these drawings.



Window Type 01A - Internal Bedroom Window

Frame: Aluminium framed. Polyester Powder coated.
Frame Colour: RAL 9010 Pure White

Opening: Inward Opening Side Hung Casement

Glazing:
Triple glazed, clear toughened glass

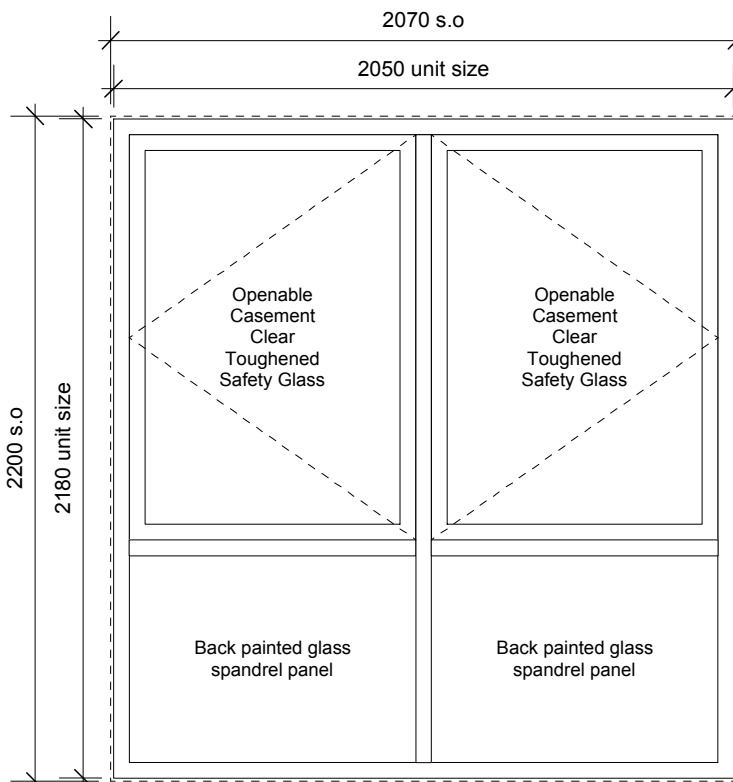
Ironmongery:
Removable handle / Budget Lock.
Opening Restrictor with key override to limit maximum opening to 100mm
Restrictor to be robust, lockable and tamper proof

Acoustic Performance:
Refer to Acoustic Performance Specification

Thermal Performance: 0.9 W/m²K Centre Pane U-Value

Fire Rating: N/A

(View from interior of room)



Window Type 04 - Internal Bedroom Window

Frame: Aluminium framed. Polyester Powder coated.
Frame Colour: RAL 9010 Pure White

Opening: Inward Opening Side Hung Casement

Glazing:
Triple glazed, clear toughened glass to openable casements.
Backpainted glass insulated spandrel panel to fixed lights.

Ironmongery:
Removable handle / Budget Lock.
Opening Restrictor with key override to limit maximum opening to 100mm
Restrictor to be robust, lockable and tamper proof

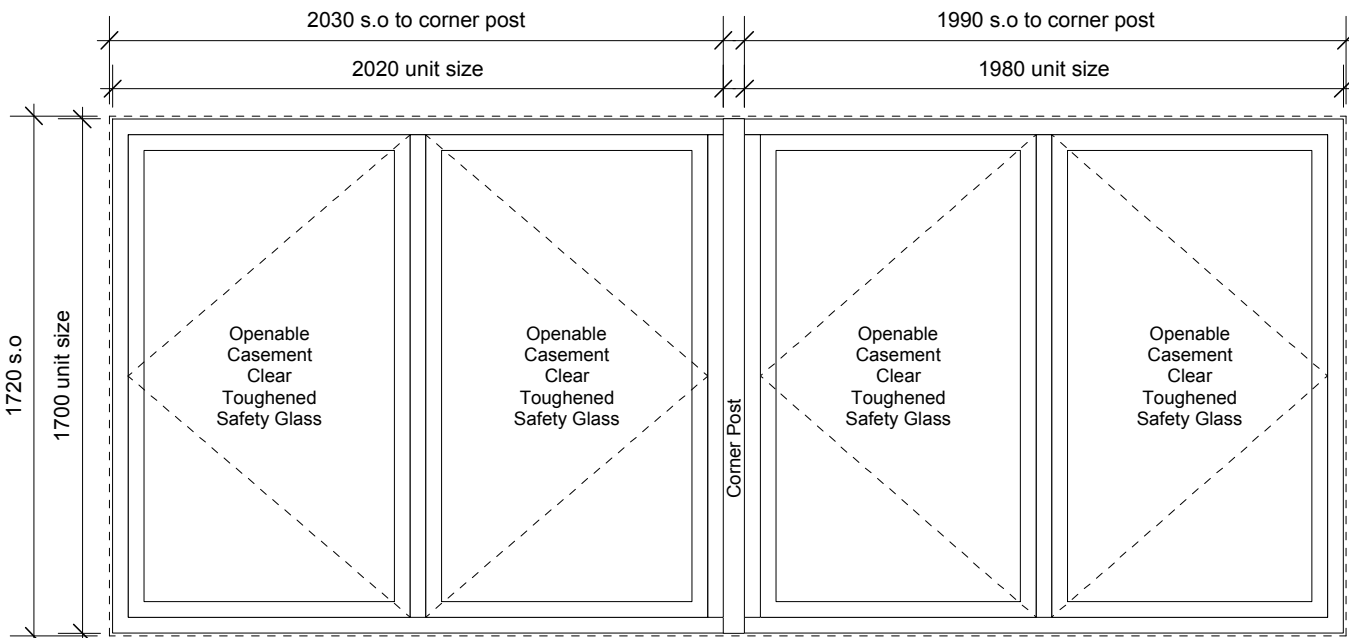
Acoustic Performance:
Refer to Acoustic Performance Specification

Thermal Performance: 0.9 W/m²K Centre Pane U-Value

Fire Rating: N/A

Mullion spacings to align with existing external windows.

(View from exterior)



Window Type 05 - Internal Bedroom Corner Window

Frame: Aluminium framed. Polyester Powder coated.
Frame Colour: RAL 9010 Pure White

Opening: Inward Opening Side Hung Casement

Glazing:
Triple glazed, clear toughened glass

Ironmongery:
Removable handle / Budget Lock.
Opening Restrictor with key override to limit maximum opening to 100mm
Restrictor to be robust, lockable and tamper proof

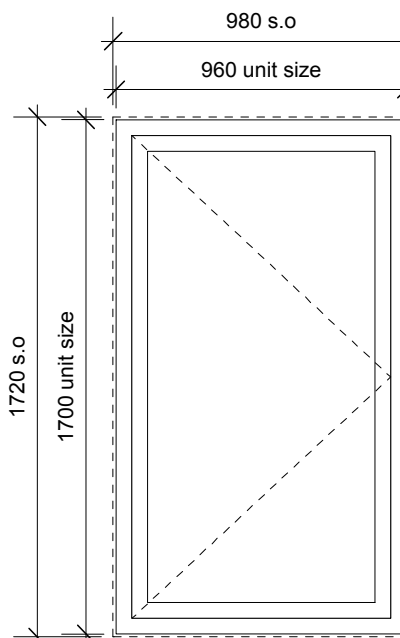
Acoustic Performance:
Refer to Acoustic Performance Specification

Thermal Performance: 0.9 W/m²K Centre Pane U-Value

Fire Rating: N/A

Mullion spacings to align with existing external windows.

(View from exterior)



Window Type 09A - Internal Bedroom Window

Frame: Aluminium framed. Polyester Powder coated.
Frame Colour: RAL 9010 Pure White

Opening: Inward Opening Side Hung Casement

Glazing:
Triple glazed, clear toughened glass

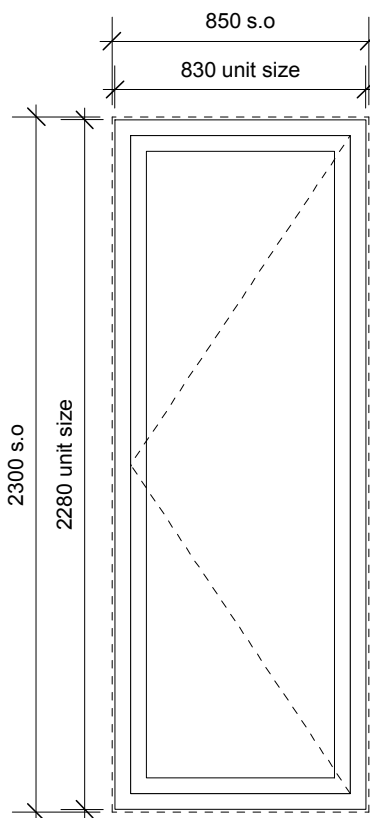
Ironmongery:
Removable handle / Budget Lock.
Opening Restrictor with key override to limit maximum opening to 100mm
Restrictor to be robust, lockable and tamper proof

Acoustic Performance:
Refer to Acoustic Performance Specification

Thermal Performance: 0.9 W/m²K Centre Pane U-Value

Fire Rating: N/A

(View from interior of room)



Window Type 01B - Internal Bedroom Window

Frame: Aluminium framed. Polyester Powder coated.
Frame Colour: RAL 9010 Pure White

Opening: Inward Opening Side Hung Casement

Glazing:
Triple glazed, clear toughened glass

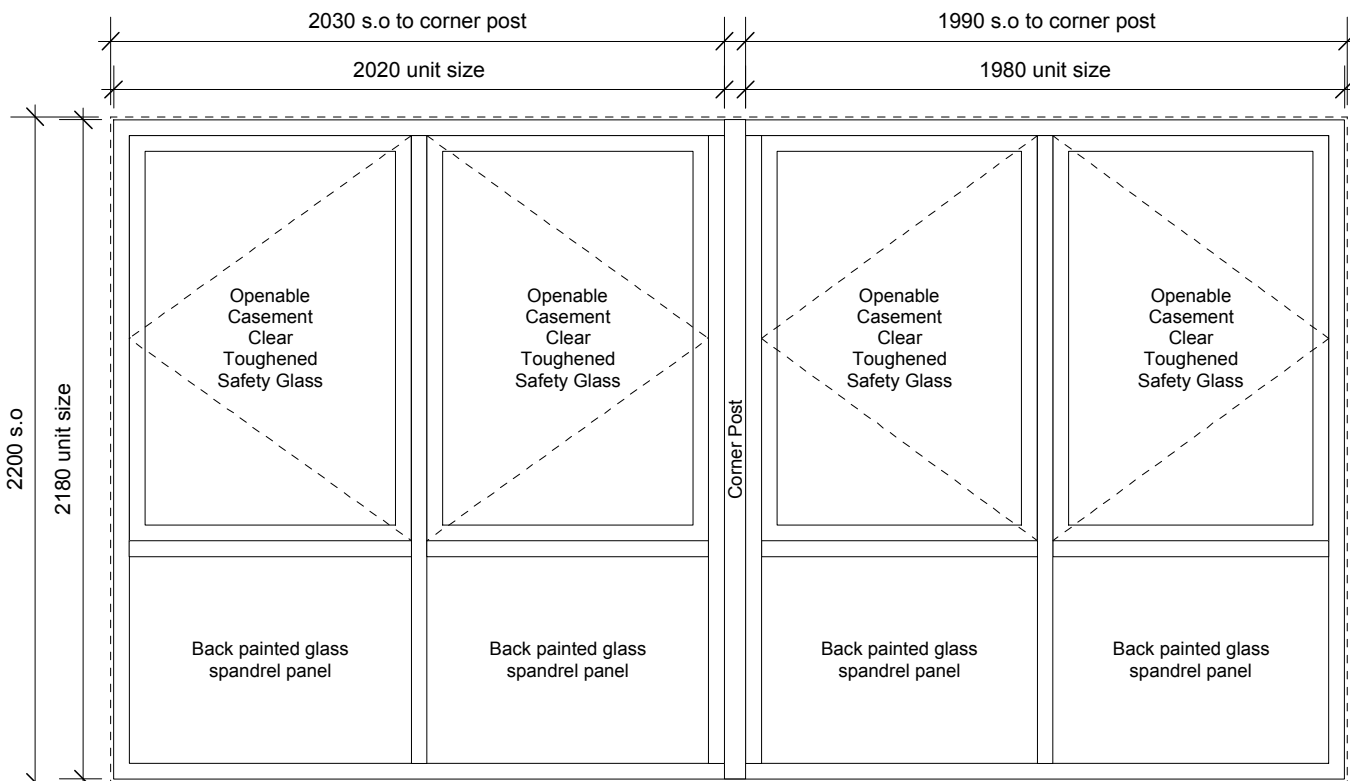
Ironmongery:
Removable handle / Budget Lock.
Opening Restrictor with key override to limit maximum opening to 100mm
Restrictor to be robust, lockable and tamper proof

Acoustic Performance:
Refer to Acoustic Performance Specification

Thermal Performance: 0.9 W/m²K Centre Pane U-Value

Fire Rating: N/A

(View from interior of room)



Window Type 06 - Internal Reception / Restaurant / Staff Window

Frame: Aluminium framed. Polyester Powder coated.
Frame Colour: RAL 9010 Pure White

Opening: Inward Opening Side Hung Casement

Glazing:
Triple glazed, clear toughened glass

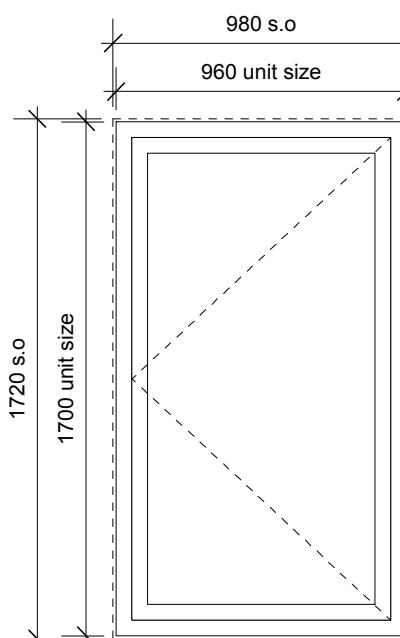
Ironmongery:
Removable handle / Budget Lock.
Opening Restrictor with key override to limit maximum opening to 100mm
Restrictor to be robust, lockable and tamper proof

Acoustic Performance:
Refer to Acoustic Performance Specification

Thermal Performance: 0.9 W/m²K Centre Pane U-Value

Fire Rating: N/A

Mullion spacings to align with existing external windows.



Window Type 09B - Internal Bedroom Window

Frame: Aluminium framed. Polyester Powder coated.
Frame Colour: RAL 9010 Pure White

Opening: Inward Opening Side Hung Casement

Glazing:
Triple glazed, clear toughened glass

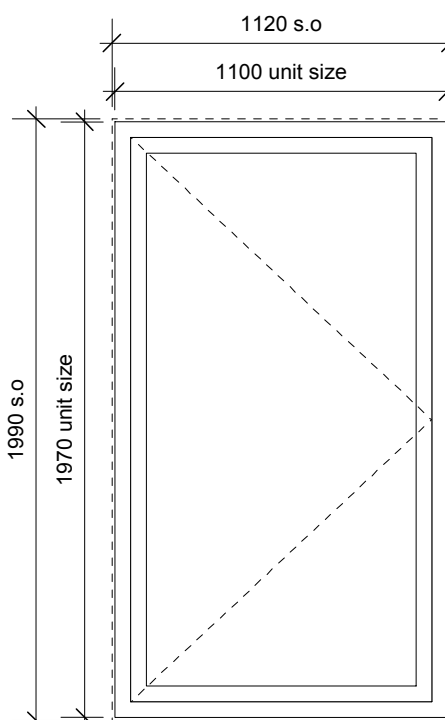
Ironmongery:
Removable handle / Budget Lock.
Opening Restrictor with key override to limit maximum opening to 100mm
Restrictor to be robust, lockable and tamper proof

Acoustic Performance:
Refer to Acoustic Performance Specification

Thermal Performance: 0.9 W/m²K Centre Pane U-Value

Fire Rating: N/A

(View from interior of room)



Window Type 02 - Internal Front & Back of House Window

Frame: Aluminium framed. Polyester Powder coated.
Frame Colour: RAL 9010 Pure White

Opening: Inward Opening Side Hung Casement

Glazing:
Triple glazed, clear toughened glass

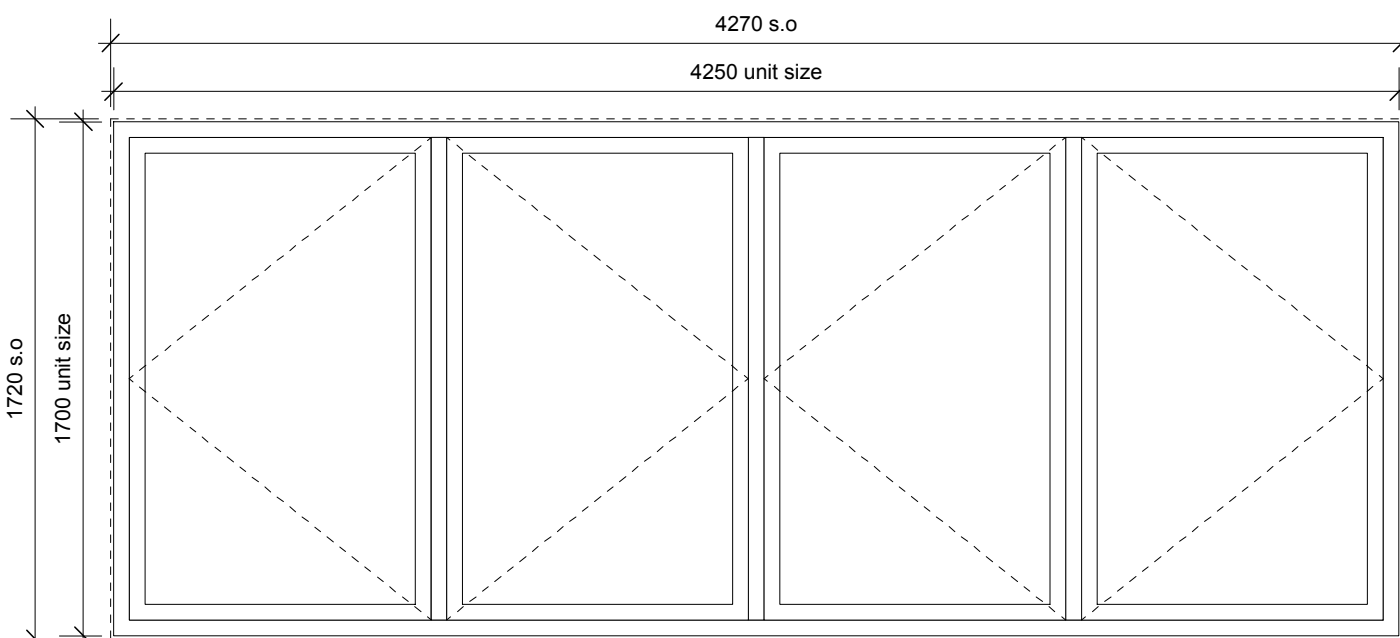
Ironmongery:
Removable handle / Budget Lock.
Opening Restrictor with key override to limit maximum opening to 100mm
Restrictor to be robust, lockable and tamper proof

Acoustic Performance:
Refer to Acoustic Performance Specification

Thermal Performance: 0.9 W/m²K Centre Pane U-Value

Fire Rating: N/A

(View from interior of room)



Window Type 03 - Internal Reception / Restaurant / Staff Window

Frame: Aluminium framed. Polyester Powder coated.
Frame Colour: RAL 9010 Pure White

Opening:
Inward Opening Side Hung Casement

Glazing:
Triple glazed, clear toughened glass to openable casements.
Backpainted glass insulated spandrel panel to fixed lights.

Ironmongery:
Removable handle / Budget Lock.
Opening Restrictor with key override to limit maximum opening to 100mm
Restrictor to be robust, lockable and tamper proof

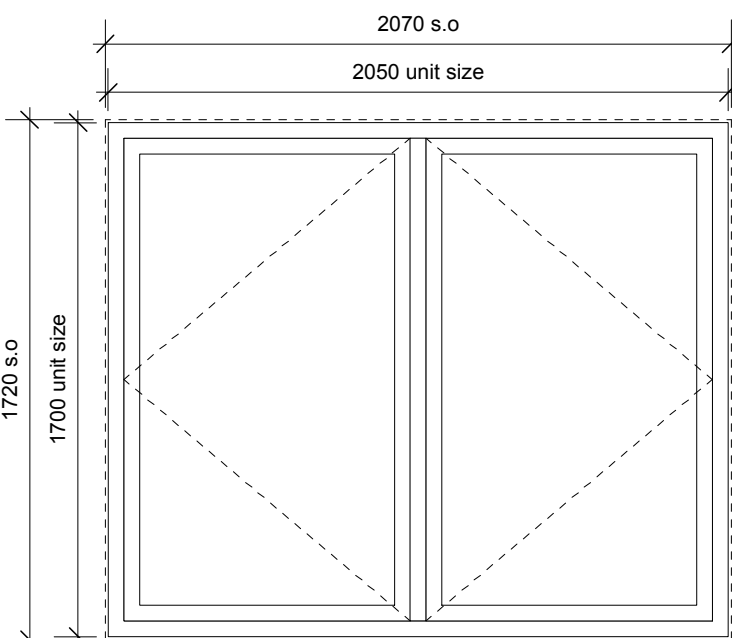
Acoustic Performance:
Refer to Acoustic Performance Specification

Thermal Performance: 0.9 W/m²K Centre Pane U-Value

Fire Rating: N/A

Mullion spacings to align with existing external windows.

(View from exterior)



Window Type 07 - Internal Bedroom Window

Frame: Aluminium framed. Polyester Powder coated.
Frame Colour: RAL 9010 Pure White

Opening:
Inward Opening Side Hung Casement

Glazing:
Triple glazed, clear toughened glass

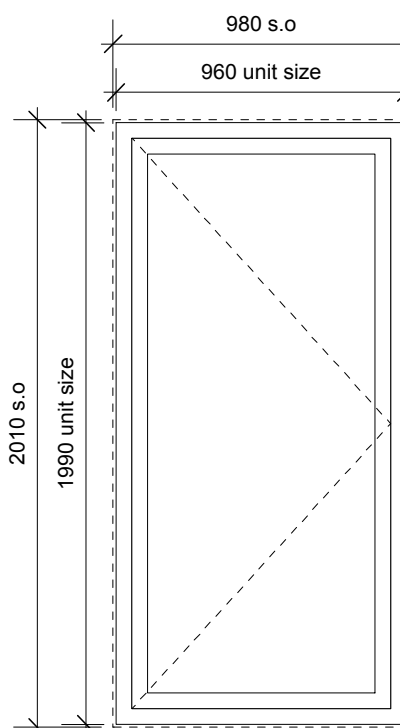
Ironmongery:
Removable handle / Budget Lock.
Opening Restrictor with key override to limit maximum opening to 100mm
Restrictor to be robust, lockable and tamper proof

Acoustic Performance:
Refer to Acoustic Performance Specification

Thermal Performance: 0.9 W/m²K Centre Pane U-Value

Fire Rating: N/A

Mullion spacings to align with existing external windows.



Window Type 10 - Internal Corridor Window

Frame: Aluminium framed. Polyester Powder coated.
Frame Colour: RAL 9010 Pure White

Opening: Inward Opening Side Hung Casement

Glazing:
Triple glazed, clear toughened glass

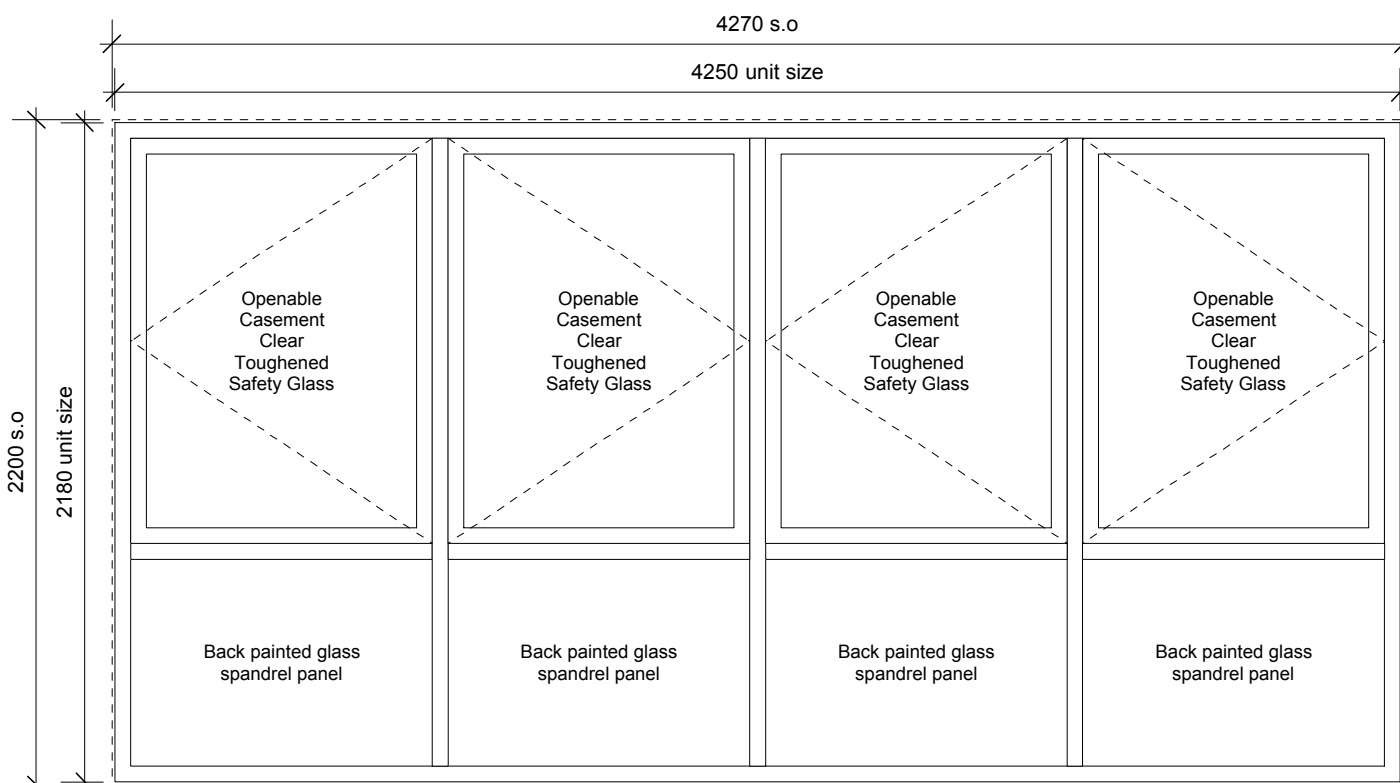
Ironmongery:
Removable handle / Budget Lock.
Opening Restrictor with key override to limit maximum opening to 100mm
Restrictor to be robust, lockable and tamper proof

Acoustic Performance:
Refer to Acoustic Performance Specification

Thermal Performance: 0.9 W/m²K Centre Pane U-Value

Fire Rating: N/A

(View from interior of room)



T1	10/12/14	Tender Issue	LB
Rev	Date	Description	By
		Brooklands Yard Southover High Street Lewes East Sussex BN7 1HU	

Tel. 01273 479269
www.axiomarchitects.co.uk

Client

Torrington Place Ltd

Project

Hub by Premier Inn
Brook House, 2-16 Torrington Place
London

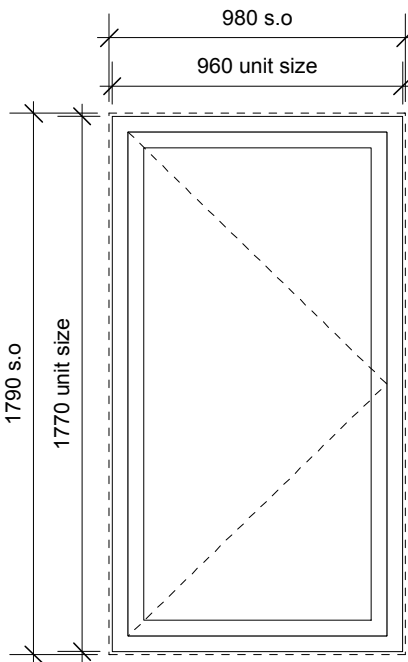
Drawing

Window Types
Sheet 1

Scale	Status	Date	Drawn	Checked
1:25 @ A1	TENDER	10/11/14	LB	

Drawing No.	Revision
-------------	----------

3114/WD/431 T1



Window Type 11 - Internal Bedroom Window

Frame: Aluminium framed. Polyester Powder coated.
Frame Colour: RAL 9010 Pure White

Opening: Inward Opening Side Hung Casement

Glazing:
Triple glazed, clear toughened glass

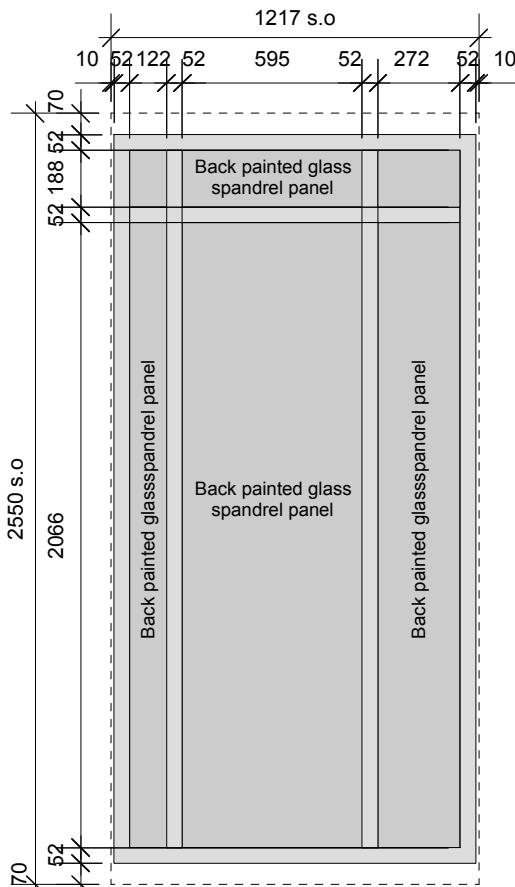
Ironmongery:
Removable handle / Budget Lock.
Opening Restrictor with key override to limit maximum opening to 100mm
Restrictor to be robust, lockable and tamper proof

Acoustic Performance:
Refer to Acoustic Performance Specification

Thermal Performance: 0.9 W/m²K Centre Pane U-Value

Fire Rating: N/A

(View from interior of room)



Window Type 13A - Roof Extension Curtain Wall Unit

Frame: Aluminium framed. Polyester Powder coated, fixed glazed curtain walling.

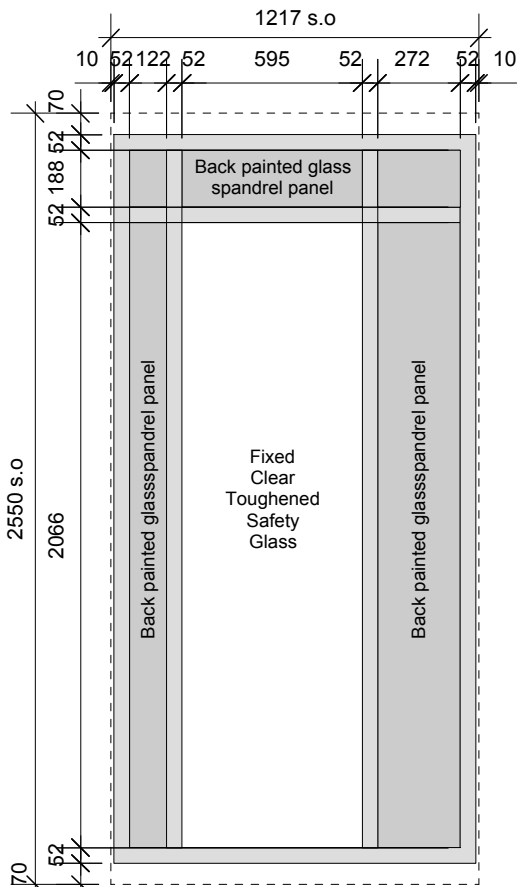
Glazing:
Back painted glass to insulated spandrel panels. Colour TBC.

Acoustic Performance:
Refer to Acoustic Performance Specification

Thermal Performance: 0.9 W/m²K Centre Pane U-Value

Fire Rating: N/A

(70mm zone shown for base fixing, if required.
Structural opening to suit frame size as shown.)



Window Type 14A - Roof Extension Curtain Wall Unit with fixed light

Frame: Aluminium framed. Polyester Powder coated, fixed glazed curtain walling.

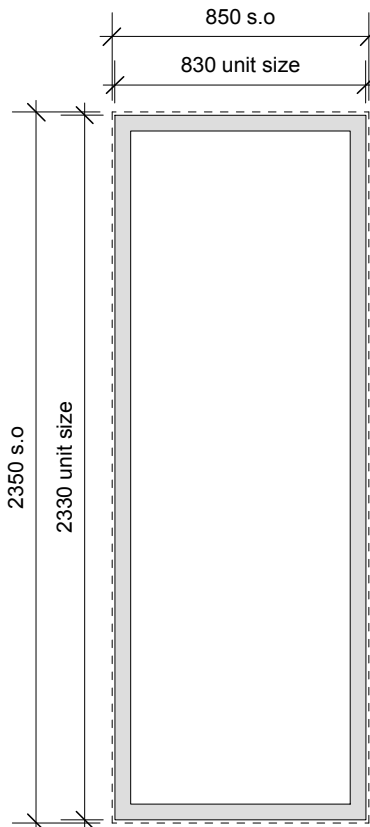
Glazing:
Back painted glass to insulated spandrel panels. Colour TBC.
Triple glazed clear toughened safety glass to fixed light.

Acoustic Performance:
Refer to Acoustic Performance Specification

Thermal Performance: 0.9 W/m²K Centre Pane U-Value

Fire Rating: N/A

(70mm zone shown for base fixing, if required.
Structural opening to suit frame size as shown.)



Window Type 12 - Roof Extension Curtain Wall Unit with fixed light

Frame:
Aluminium framed. Polyester Powder coated, fixed glazed curtain walling.

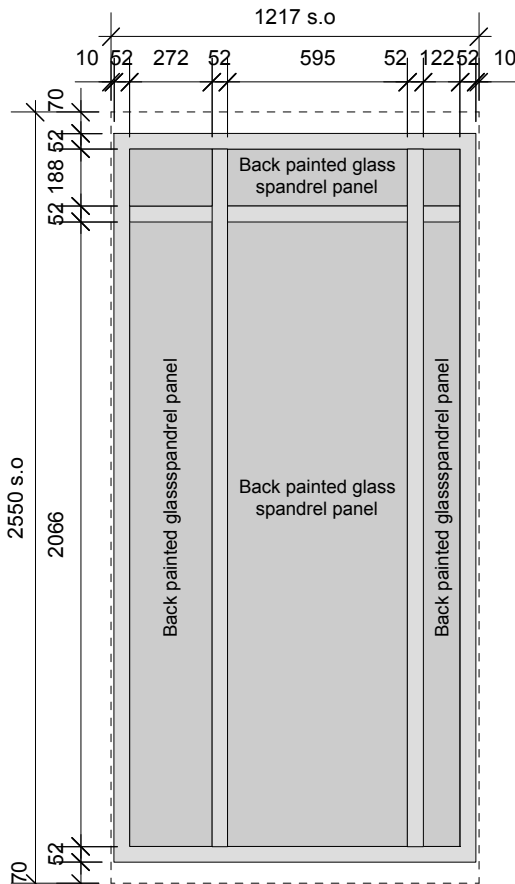
Frame Colour:
RAL 7004 Signal Grey to external faces.
RAL 9010 Pure White to internal faces

Glazing: Triple glazed clear toughened safety glass to fixed light.

Acoustic Performance:
Refer to Acoustic Performance Specification

Thermal Performance: 0.9 W/m²K Centre Pane U-Value

Fire Rating: N/A



Window Type 13B - Roof Extension Curtain Wall Unit

Frame: Aluminium framed. Polyester Powder coated, fixed glazed curtain walling.

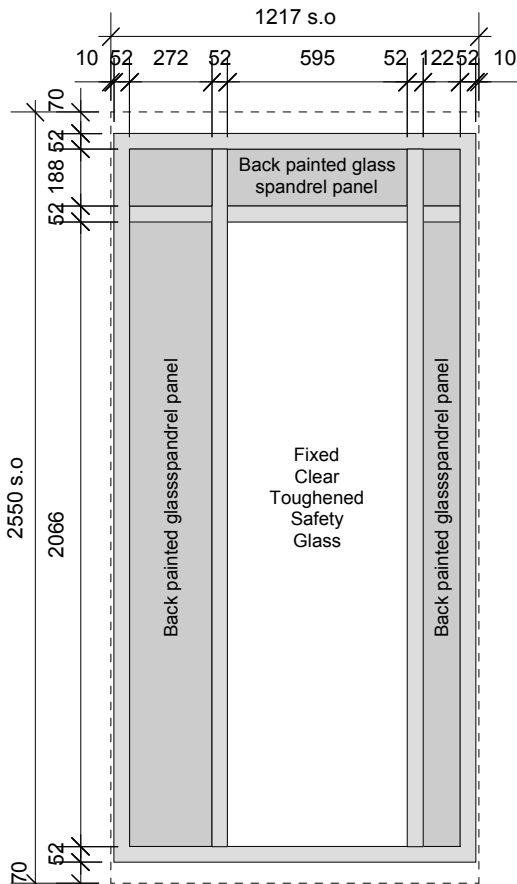
Glazing:
Back painted glass to insulated spandrel panels. Colour TBC.

Acoustic Performance:
Refer to Acoustic Performance Specification

Thermal Performance: 0.9 W/m²K Centre Pane U-Value

Fire Rating: N/A

(70mm zone shown for base fixing, if required.
Structural opening to suit frame size as shown.)



Window Type 14B - Roof Extension Curtain Wall Unit with fixed light

Frame: Aluminium framed. Polyester Powder coated, fixed glazed curtain walling.

Glazing:
Back painted glass to insulated spandrel panels. Colour TBC.
Triple glazed clear toughened safety glass to fixed light.

Acoustic Performance:
Refer to Acoustic Performance Specification

Thermal Performance: 0.9 W/m²K Centre Pane U-Value

Fire Rating: N/A

(70mm zone shown for base fixing, if required.
Structural opening to suit frame size as shown.)

This drawing is the copyright of Axiom Architects.

The contractor is to check all site dimensions and levels before work starts. **Do not scale** from drawings. Notify the architect of any discrepancies. This drawing must be read with and checked against all structural and other specialist drawings, specification and bills of quantities. Notify the architect of any discrepancies. The contractor is to comply with all current British Standards and Building Regulations whether or not specifically stated on these drawings.

SPECIFICATION NOTES:

Internal Window Frames:

Unless otherwise indicated for specific types, all windows are to be Schuco AWS 90SI or similar and approved thermally broken aluminium framed polyester powder coated windows.

Frame colour: As noted on Type description.

Casement windows to be internally beaded.

Refer to window types for opening details.

External Window Frames:

Unless otherwise indicated for specific types, all windows are to be Schuco AWS 90SI or similar and approved thermally broken aluminium framed polyester powder coated windows.

Frame colour: As noted on Type description.

Casement windows to be internally beaded.

External Curtain Walling

Schuco FW50+ or similar and approved Aluminium framed, polyester powde coated Curtain Walling

Frame Colour:
RAL 7004 Signal Grey to external faces.
RAL 9010 Pure White to internal faces.

External curtain wall units to be externally beaded.

T1	10/12/14	Tender Issue	LB
Rev	Date	Description	By
		Brooklands Yard Southover High Street Lewes East Sussex BN7 1HU	

Tel. 01273 479269
www.axiomarchitects.co.uk

AXIOM
ARCHITECTS

Client

Torrington Place Ltd

Project

Hub by Premier Inn
Brook House, 2-16 Torrington Place
London

Drawing

Window Types

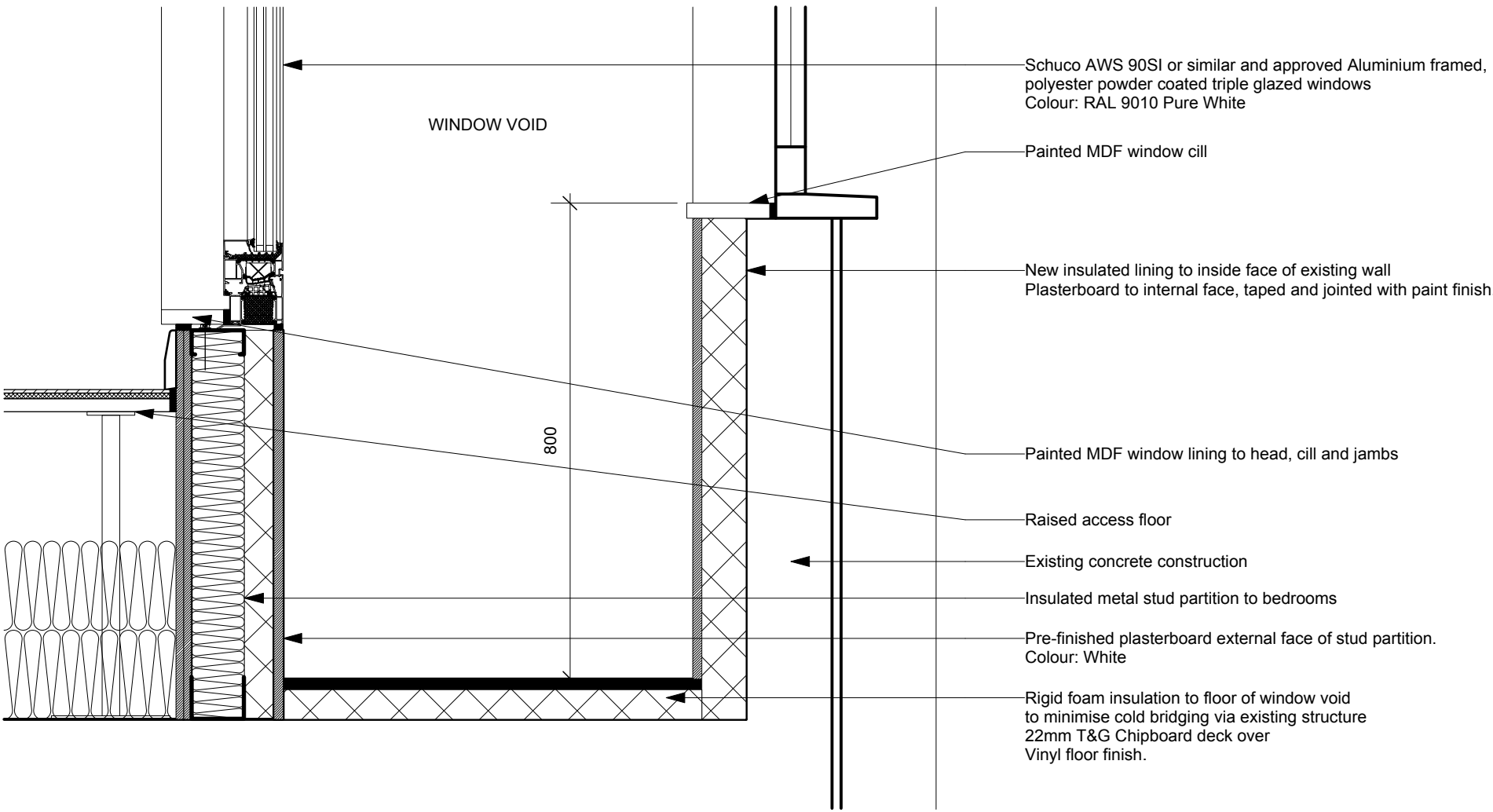
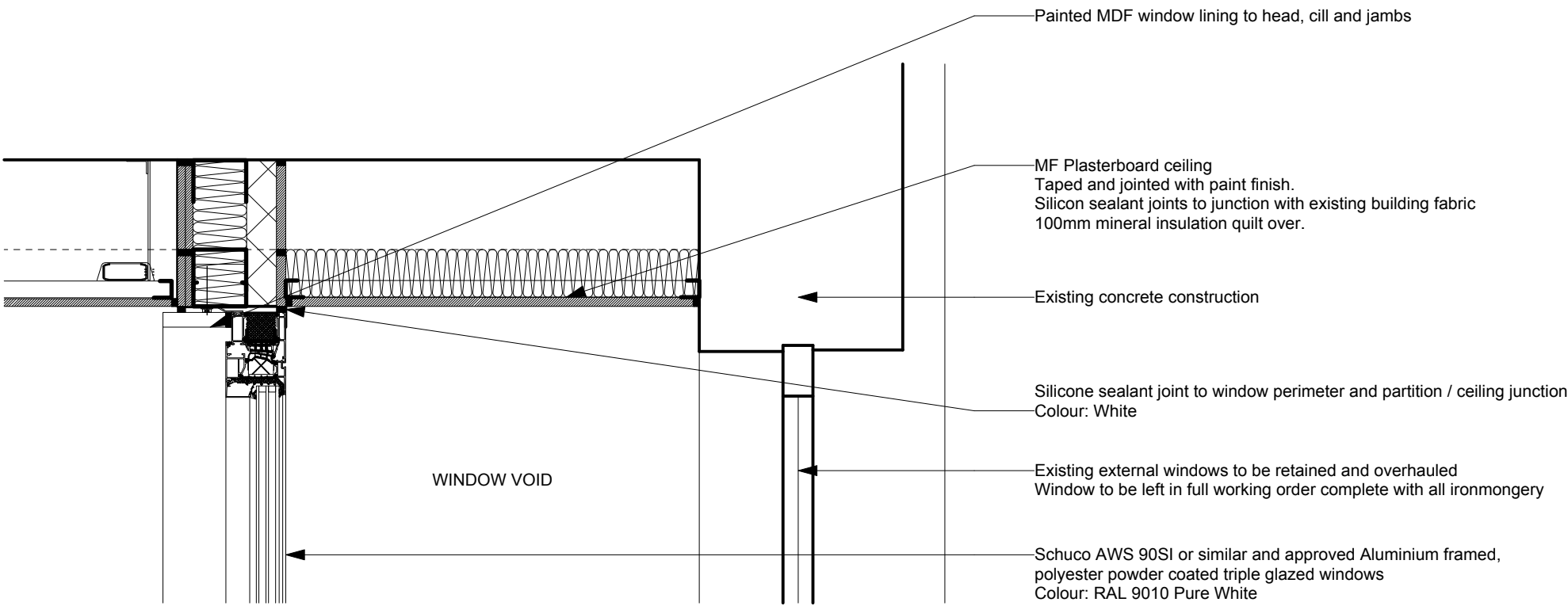
Sheet 2

Scale	Status	Date	Drawn	Checked
1:25 @ A1	TENDER	10/11/14	LB	

Drawing No.	Revision
-------------	----------

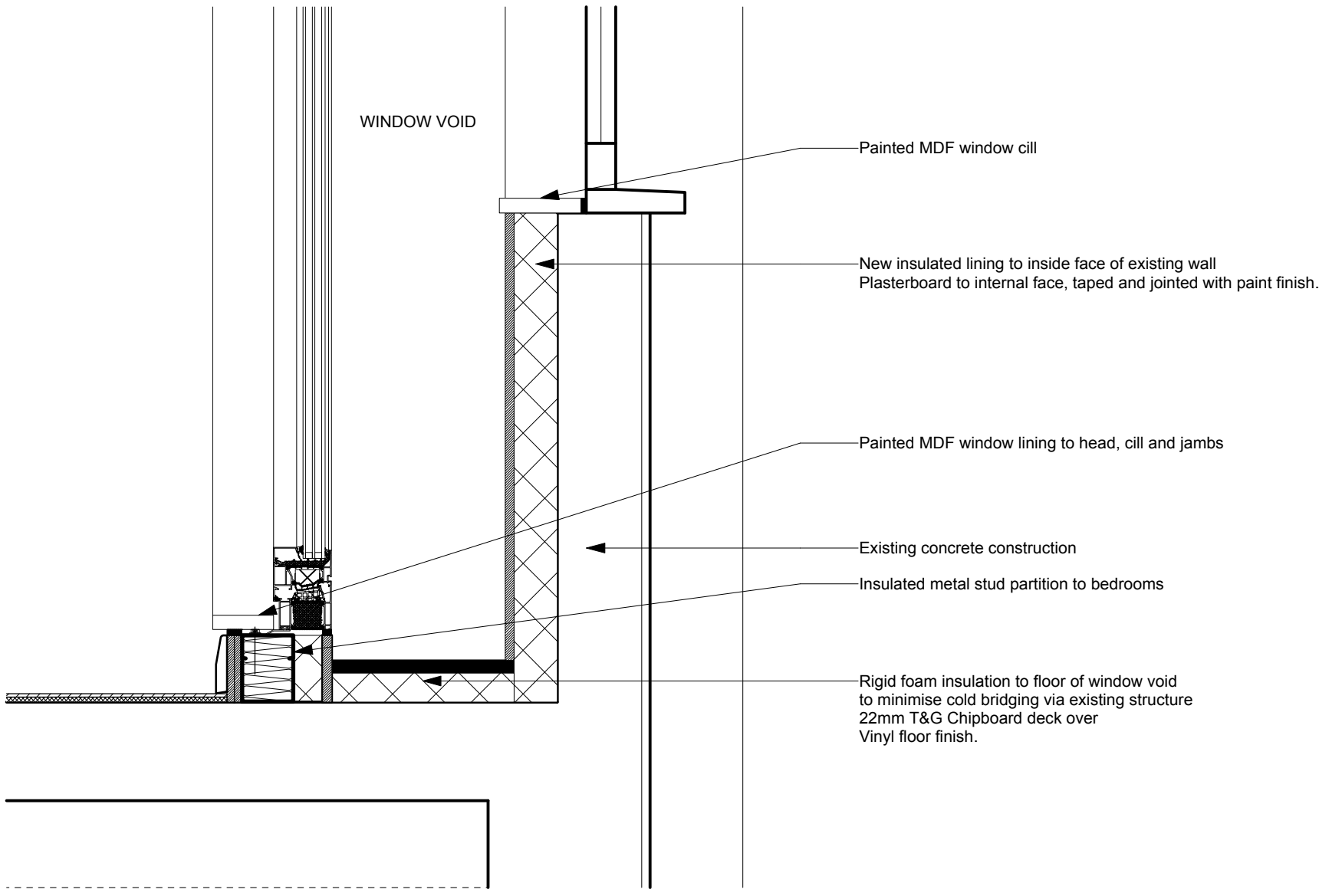
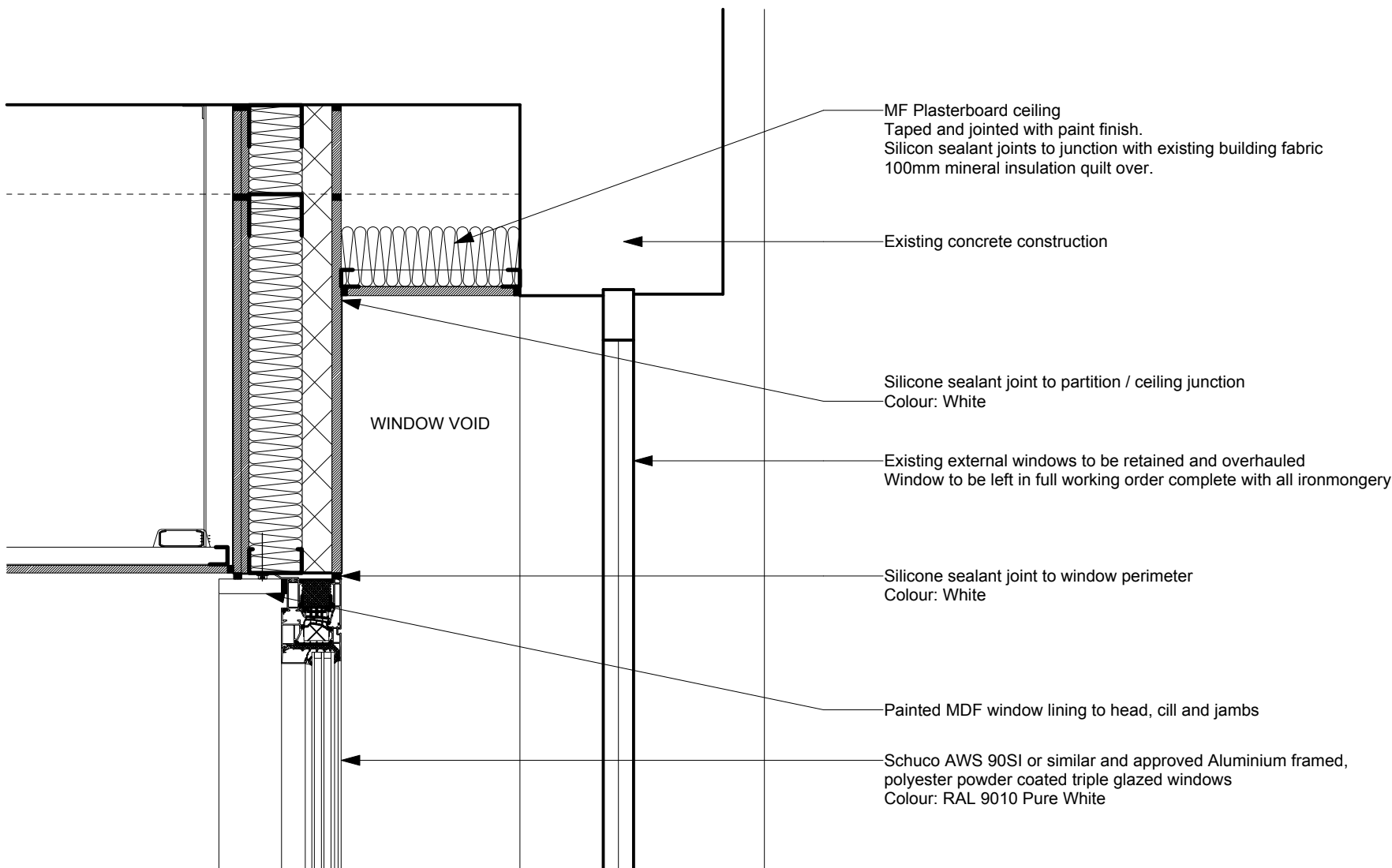
3114/WD/432 **T1**

FIRST FLOOR INTERNAL WINDOW HEAD DETAIL



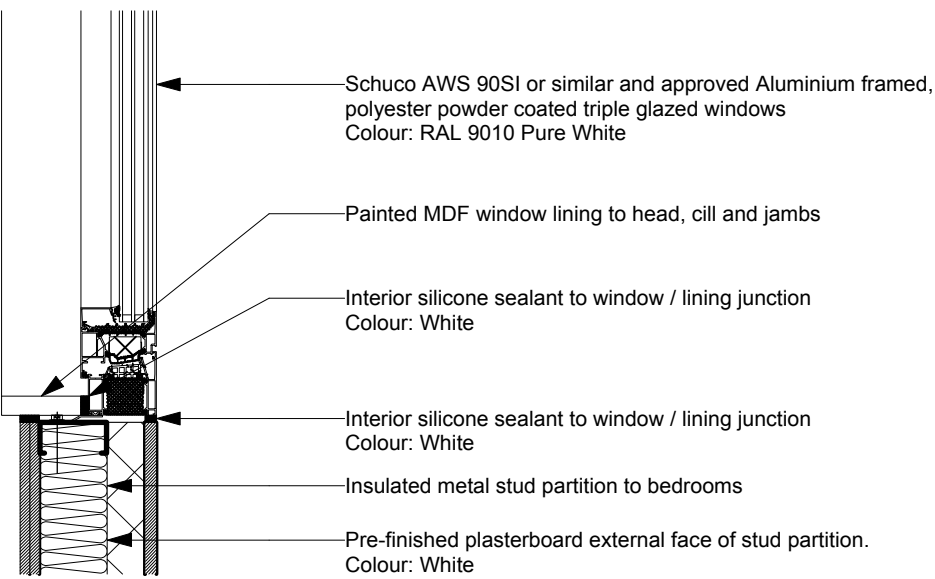
FIRST FLOOR INTERNAL WINDOW CILL DETAIL

TYPICAL INTERNAL WINDOW HEAD DETAIL
SECOND FLOOR AND ABOVE



TYPICAL INTERNAL WINDOW CILL DETAIL
SECOND FLOOR AND ABOVE

TYPICAL INTERNAL WINDOW JAMB DETAIL



This drawing is the copyright of Axiom Architects.

The contractor is to check all site dimensions and levels before work starts. Do not scale from drawings. Notify the architect of any discrepancies. This drawing must be read with and checked against all structural and other specialist drawings, specification and bills of quantities. Notify the architect of any discrepancies. The contractor is to comply with all current British Standards and Building Regulations whether or not specifically stated on these drawings.

T1 16/01/15 Tender Issue

LB

Rev Date Description

By

Brooklands Yard
Southover High Street
Lewes
East Sussex
BN7 1HU

AXIOM
ARCHITECTS

Tel. 01273 479269
www.axiomarchitects.co.uk

Client

Torrington Place Ltd

Project

Hub by Premier Inn
Brook House, 2 - 16 Torrington Place
London

Drawing

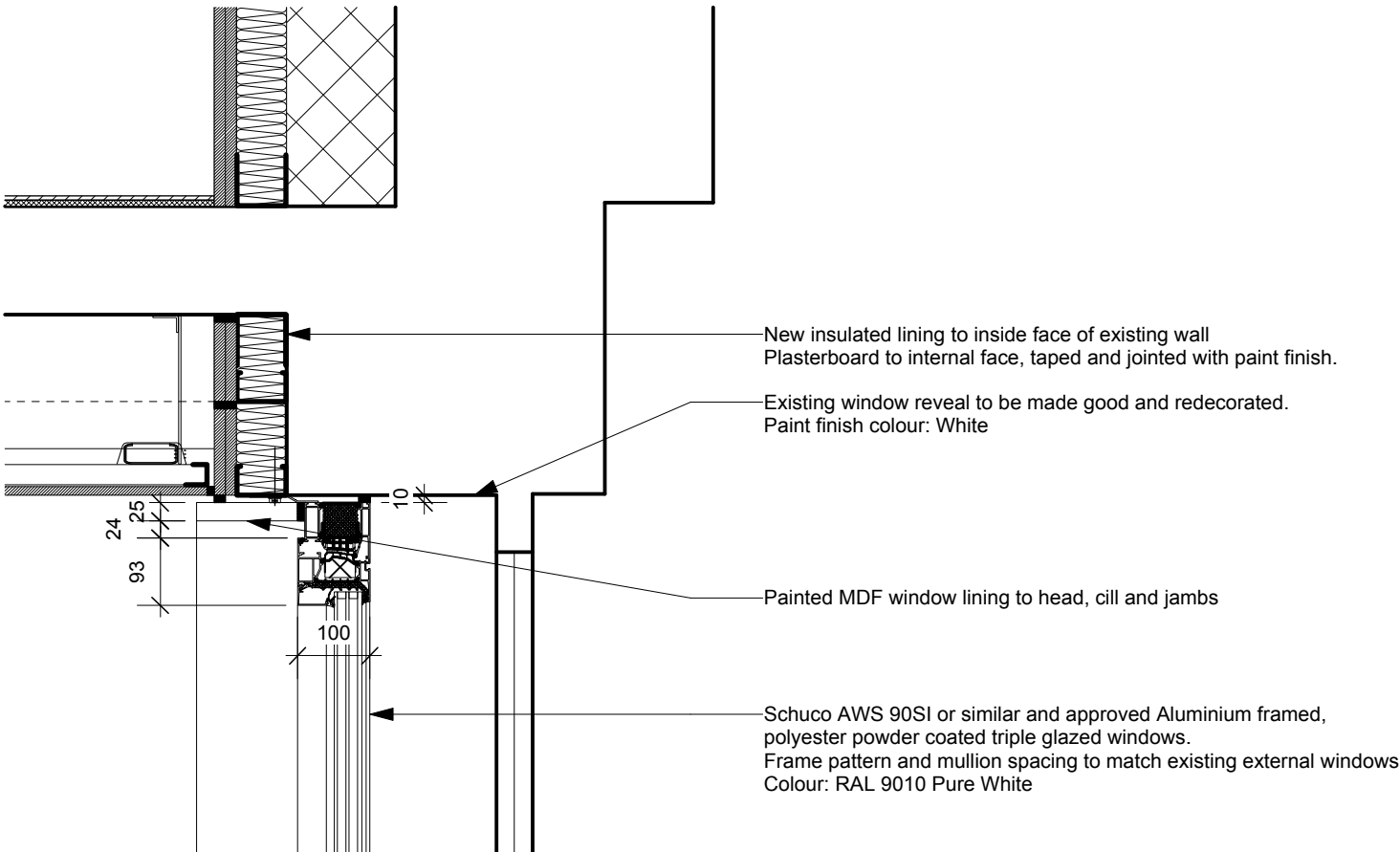
Typical Internal Window Details

Scale 1:10@ A1 Status TENDER Date 16/01/15 Drawn LB Checked

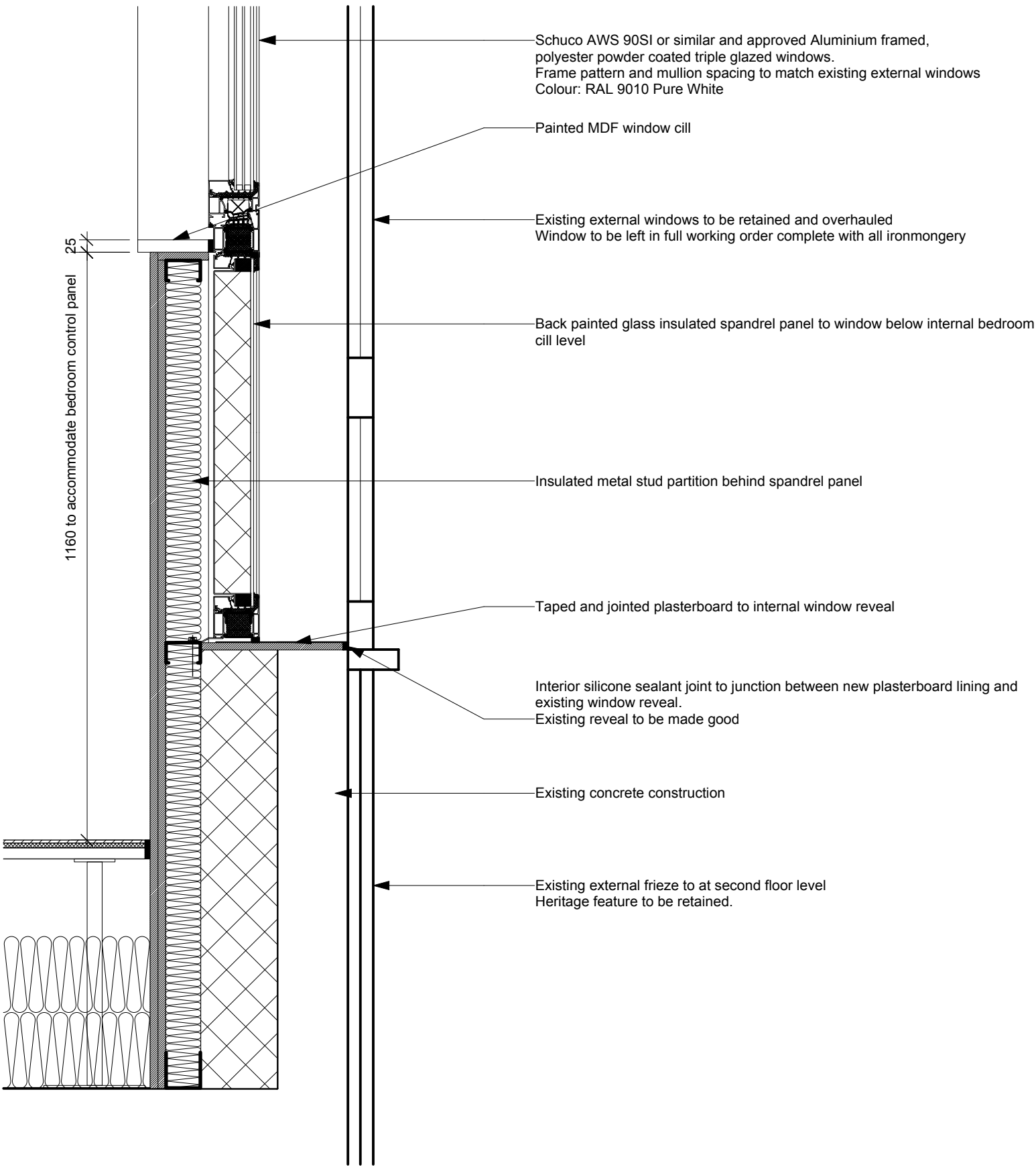
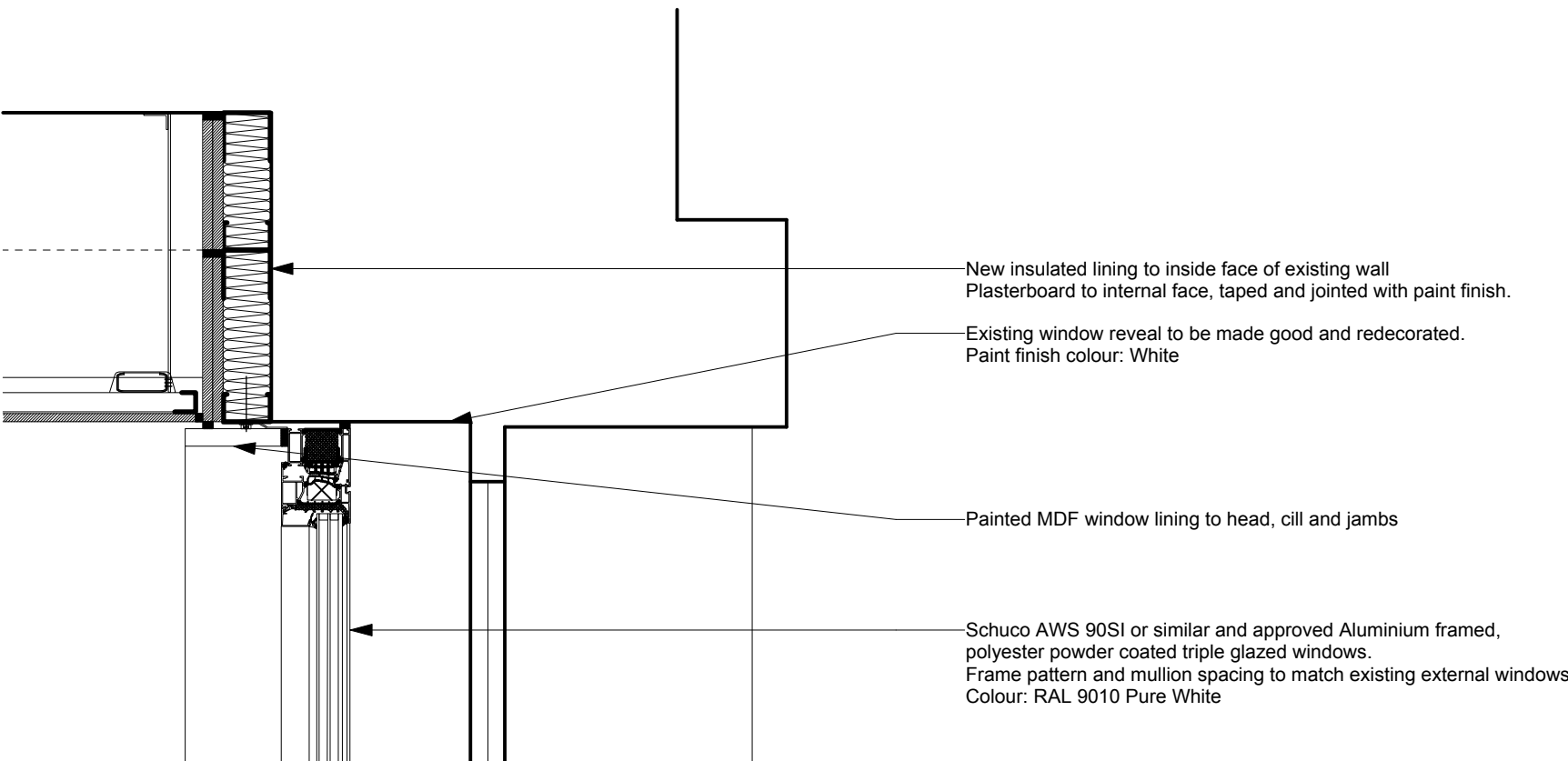
Drawing No. Revision

3114/WD/433 T1

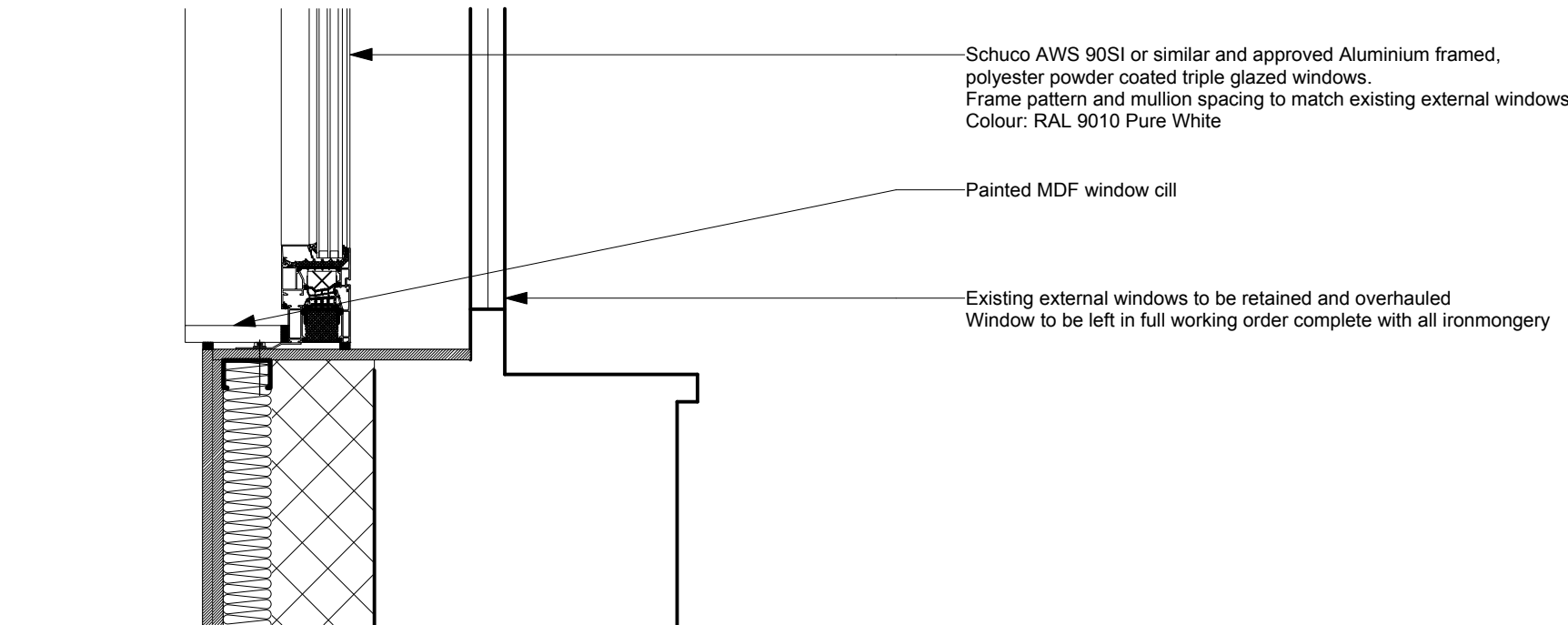
SECOND FLOOR INTERNAL WINDOW HEAD DETAIL - TOTTENHAM COURT ROAD FRONTAGE



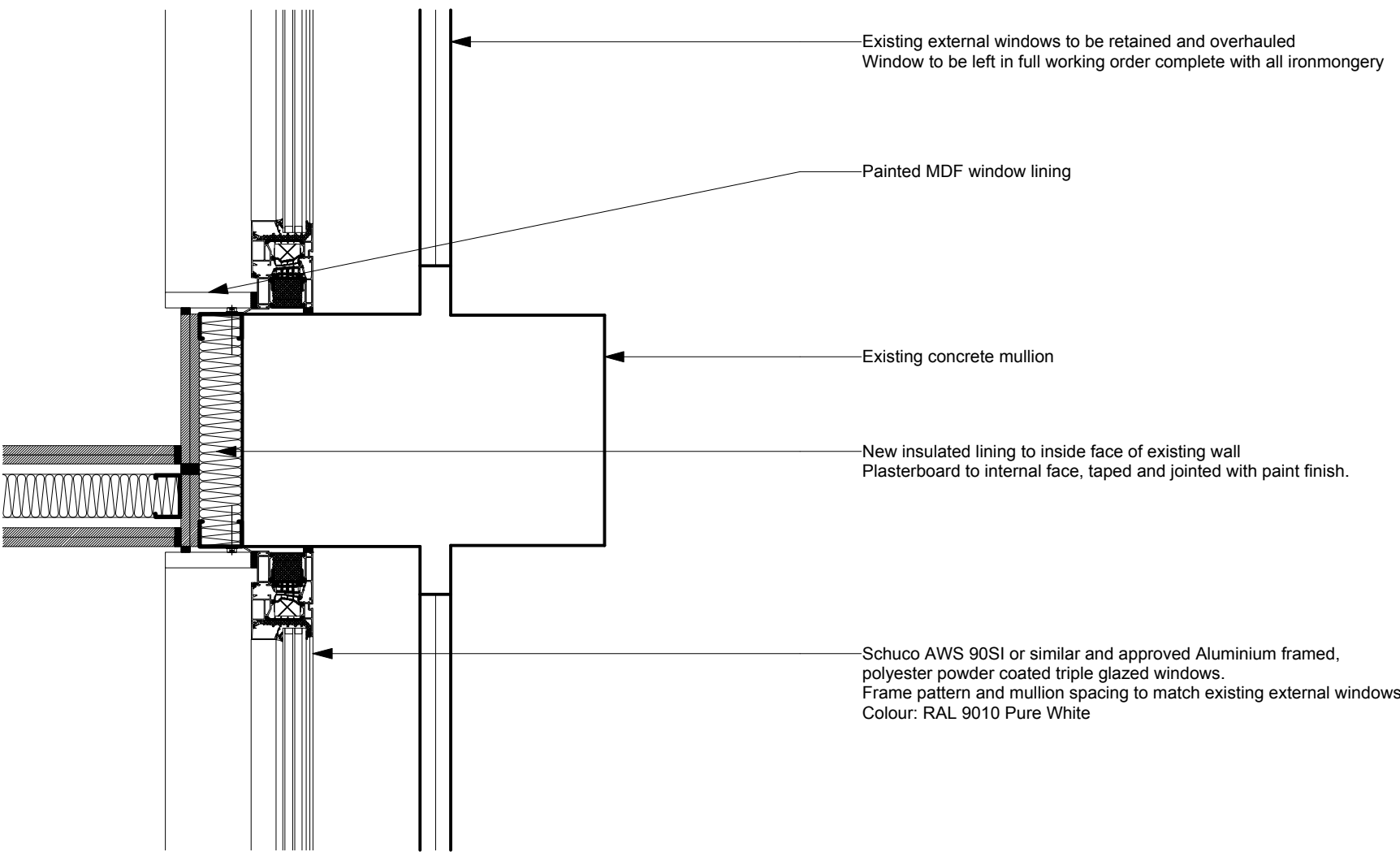
TYPICAL INTERNAL WINDOW HEAD DETAIL - TOTTENHAM COURT ROAD FRONTAGE



SECOND FLOOR INTERNAL WINDOW CILL DETAIL - TOTTENHAM COURT ROAD FRONTAGE



TYPICAL INTERNAL WINDOW CILL DETAIL - TOTTENHAM COURT ROAD FRONTAGE



TYPICAL INTERNAL WINDOW JAMB DETAIL - TOTTENHAM COURT ROAD FRONTAGE

T1	16/01/15	Tender Issue	LB
Rev	Date	Description	By
		Brooklands Yard Southover High Street Lewes East Sussex BN7 1HU	

Tel. 01273 479269
www.axiomarchitects.co.uk

AXIOM
ARCHITECTS

Client
Torrington Place Ltd

Project
Hub by Premier Inn
Brook House, 2 - 16 Torrington Place
London

Drawing
Window Details
Tottenham Court Road Frontage

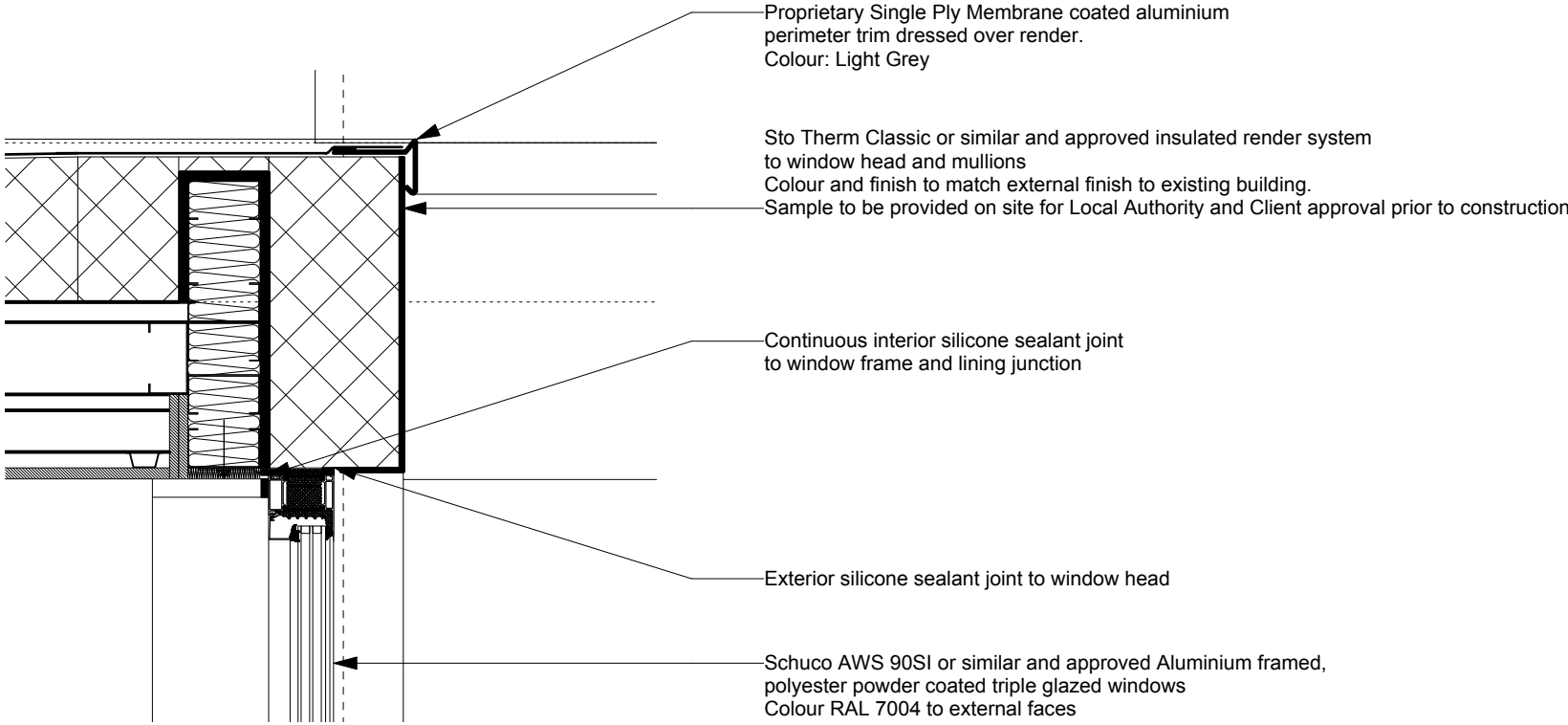
Scale	Status	Date	Drawn	Checked
1:10@ A1	TENDER	16/01/15	LB	

Drawing No.	Revision
-------------	----------

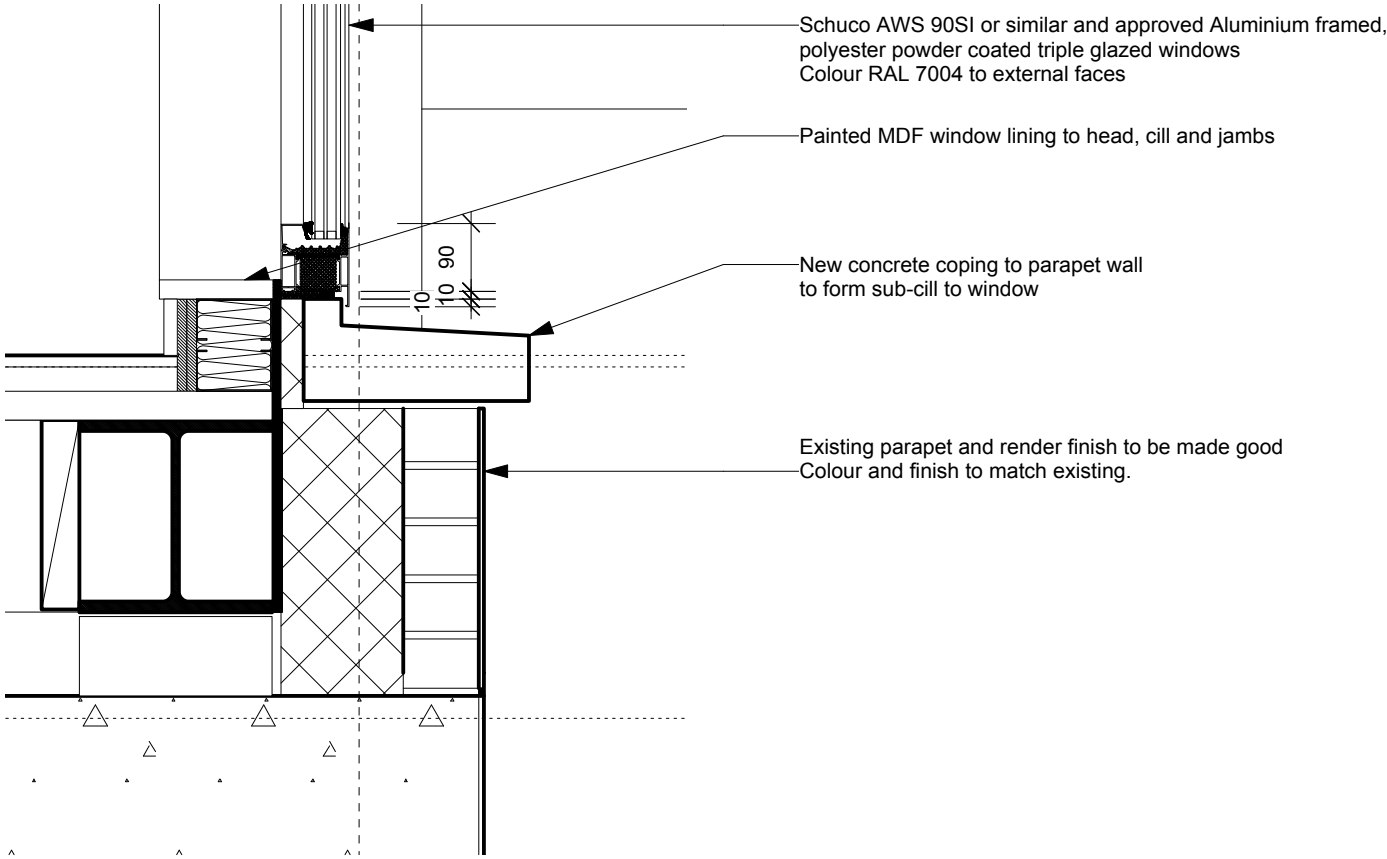
3114/WD/434 T1

This drawing is the copyright of Axiom Architects.

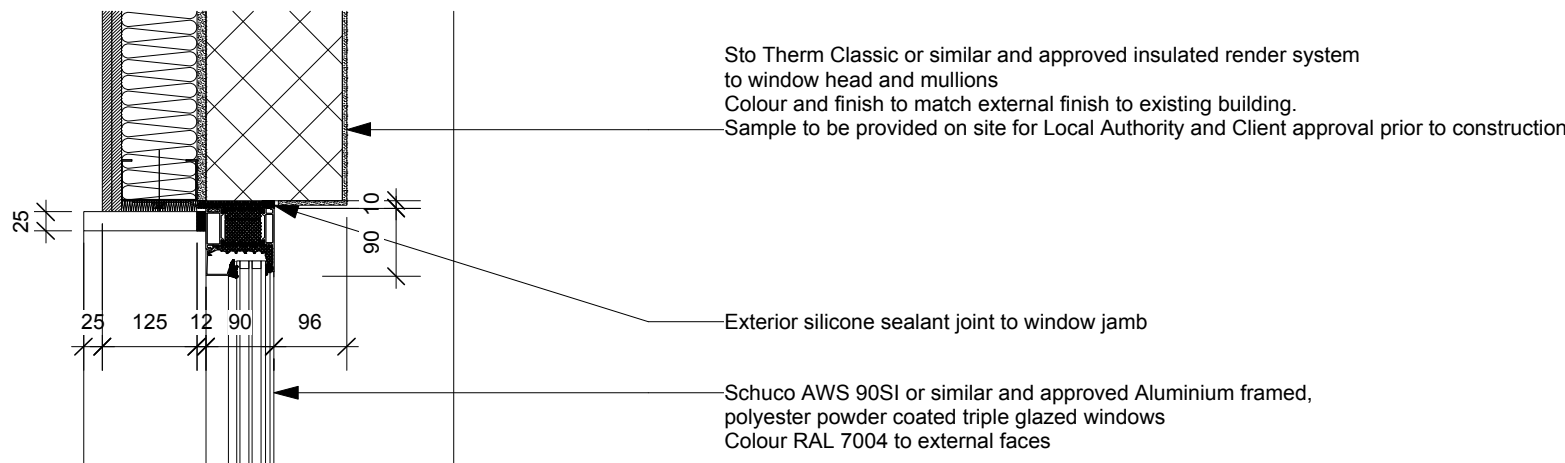
The contractor is to check all site dimensions and levels before work starts. Do not scale from drawings. Notify the architect of any discrepancies. This drawing must be read with and checked against all structural and other specialist drawings, specification and bills of quantities. Notify the architect of any discrepancies. The contractor is to comply with all current British Standards and Building Regulations whether or not specifically stated on these drawings.



6TH FLOOR EXTERNAL WINDOW HEAD DETAIL
SOUTH ELEVATION



6TH FLOOR EXTERNAL WINDOW CILL DETAIL
SOUTH ELEVATION



6TH FLOOR EXTERNAL WINDOW JAMB DETAIL
SOUTH ELEVATION

T1	16/01/15	Tender Issue	LB
Rev	Date	Description	By
		Brooklands Yard Southover High Street Lewes East Sussex BN7 1HU	

Tel. 01273 479269
www.axiomarchitects.co.uk

AXIOM
ARCHITECTS

Client
Torrington Place Ltd

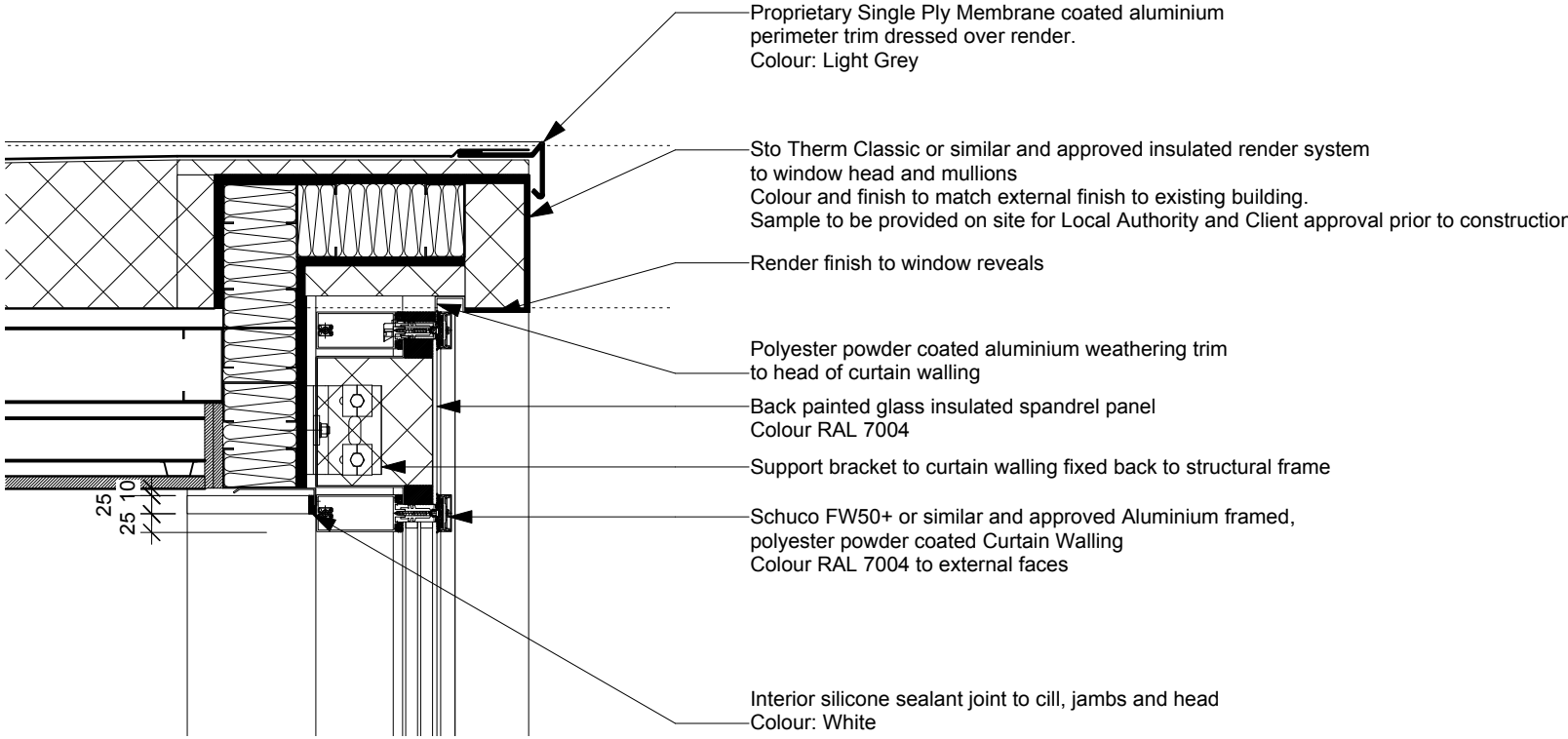
Project
Hub by Premier Inn
Brook House, 2 - 16 Torrington Place
London

Drawing
Roof Extension
Window Details
South Elevation

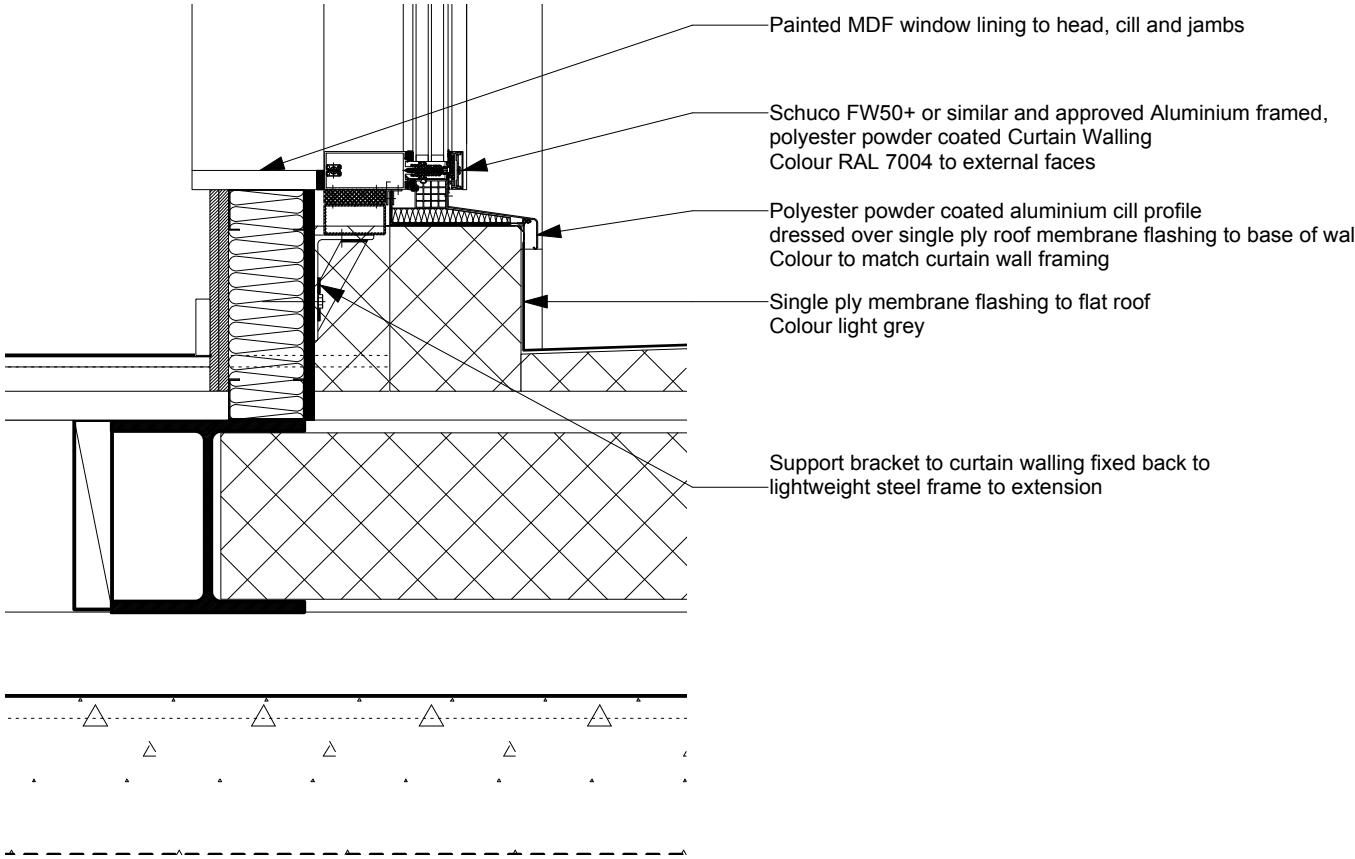
Scale	Status	Date	Drawn	Checked
1:10@ A1	TENDER	16/01/15	LB	

Drawing No.	Revision
-------------	----------

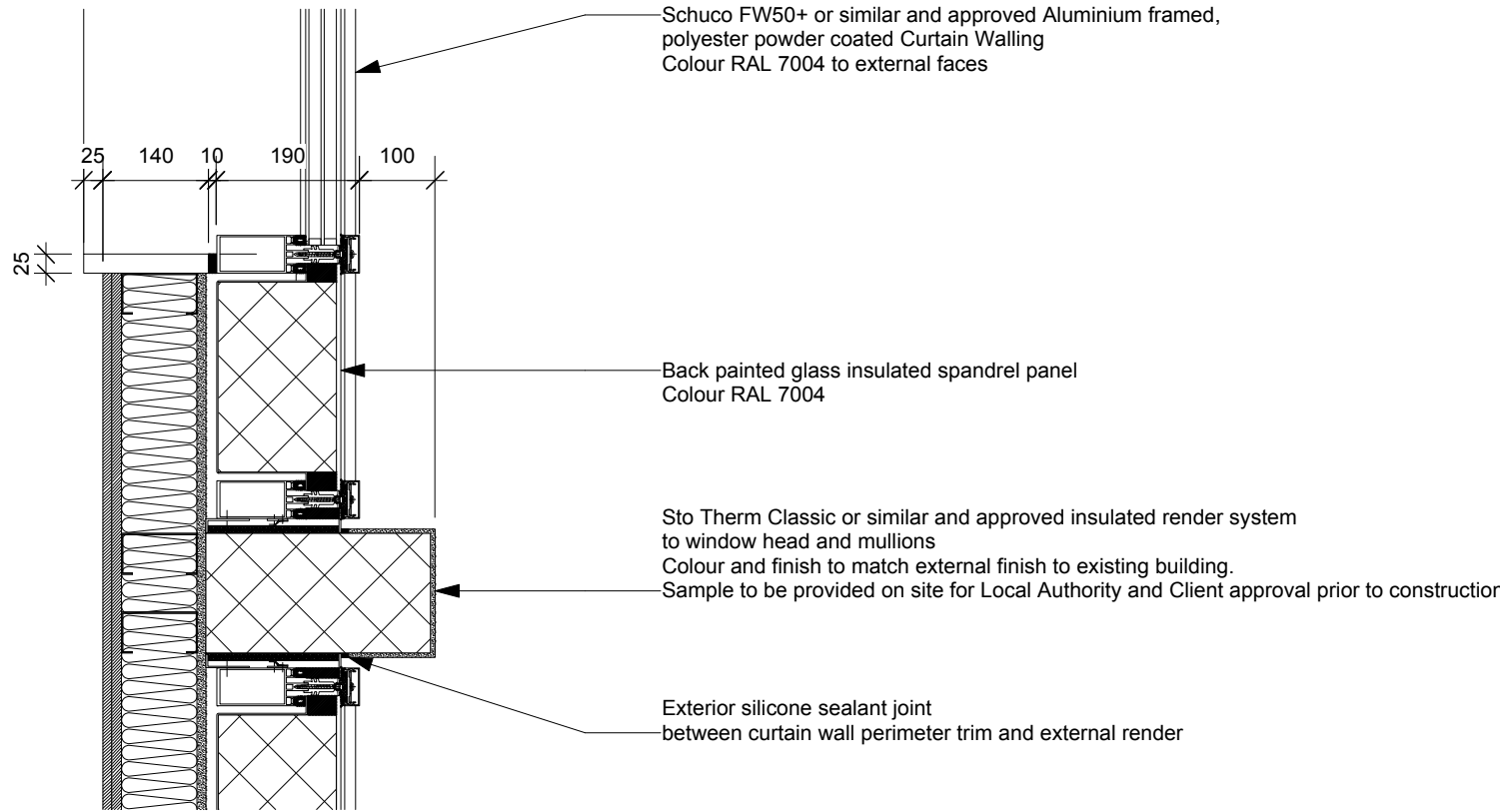
3114/WD/412 T1



6TH FLOOR EXTERNAL WINDOW HEAD DETAIL
NORTH ELEVATION



6TH FLOOR EXTERNAL WINDOW CILL DETAIL
NORTH ELEVATION



6TH FLOOR EXTERNAL WINDOW JAMB DETAIL
NORTH ELEVATION

T1	16/01/15	Tender Issue	LB
Rev	Date	Description	By
		Brooklands Yard Southover High Street Lewes East Sussex BN7 1HU	

Tel. 01273 479269
www.axiomarchitects.co.uk

AXIOM
ARCHITECTS

Client
Torrington Place Ltd

Project
Hub by Premier Inn
Brook House, 2 - 16 Torrington Place
London

Drawing
Roof Extension
Window Details
North Elevation

Scale	Status	Date	Drawn	Checked
1:10@ A1	TENDER	16/01/15	LB	

Drawing No.	Revision
-------------	----------

3114/WD/413 T1