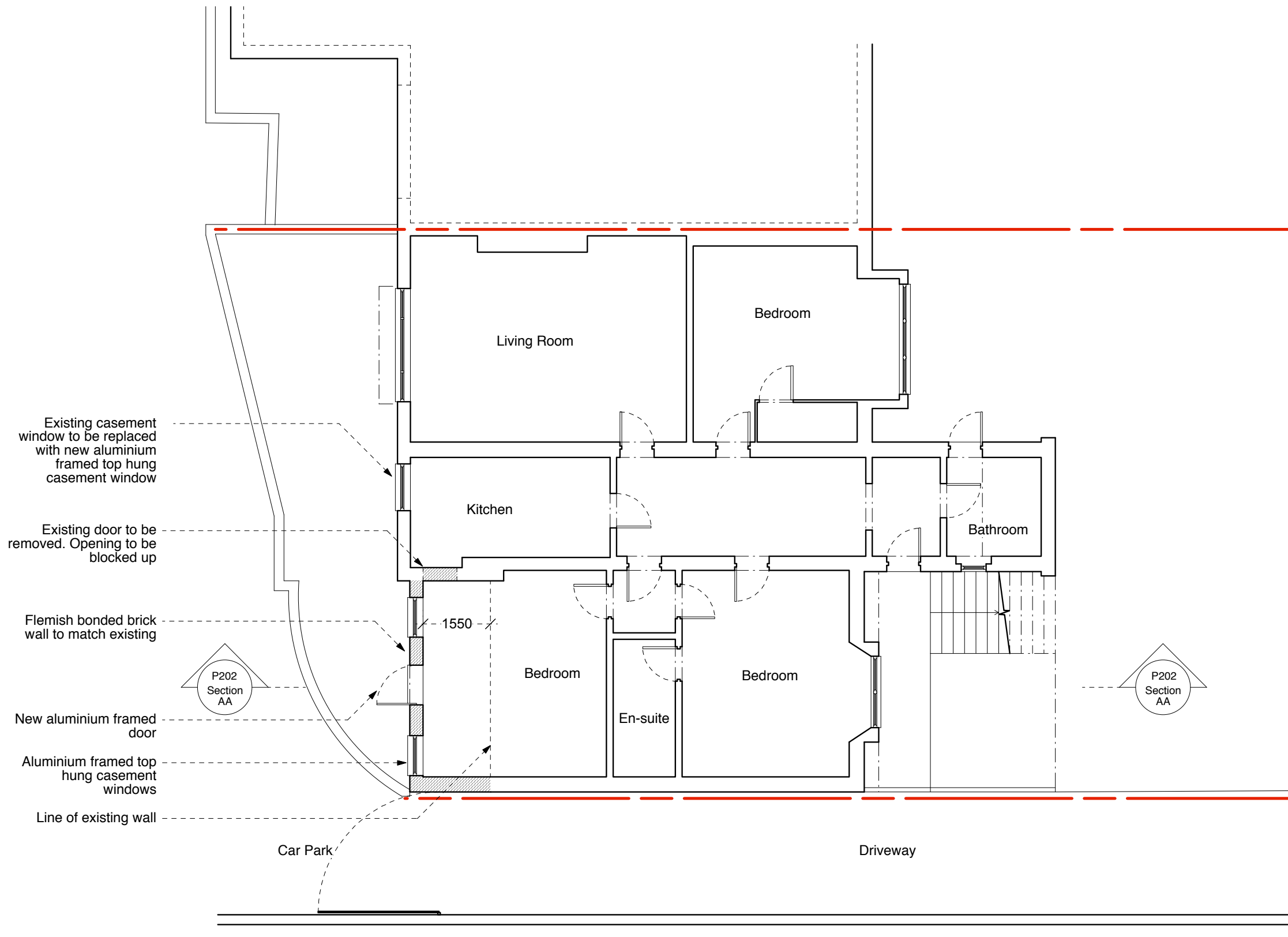
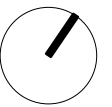


General Notes
 Do not scale from this drawing
 All dimensions to be verified on site
 To be read in conjunction with all relevant documents
 In the event of discrepancy notify the Architect immediately
 This document is copyright of Hugh Cullum Architects Ltd

Issue Status
 SK Information F Feasibility D Design
 P Permissions S Scheme T Tender
 C Construction E Existing Condition



(_) : Issued for Planning (15.01.15/AL)
 Revision: Information (date/drawn by)



Proposed Lower Ground Floor Plan

HUGH CULLUM ARCHITECTS LTD
 Bloomsbury Design
 61b Judd Street
 London WC1H 9QT
 t 020 7383 7647
 f 020 7387 7645
 mail@hughcullum.com

64A Fitzjohn's Avenue
 Planning - Rear Extension
 Lower Ground Floor Plan
 1:100@A3 January 2015
FZA64-P200(_)