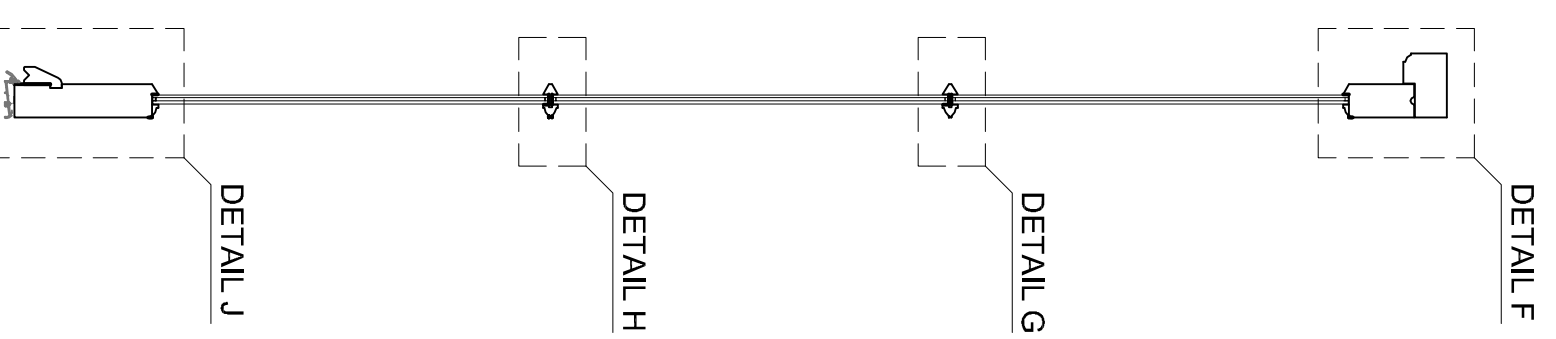
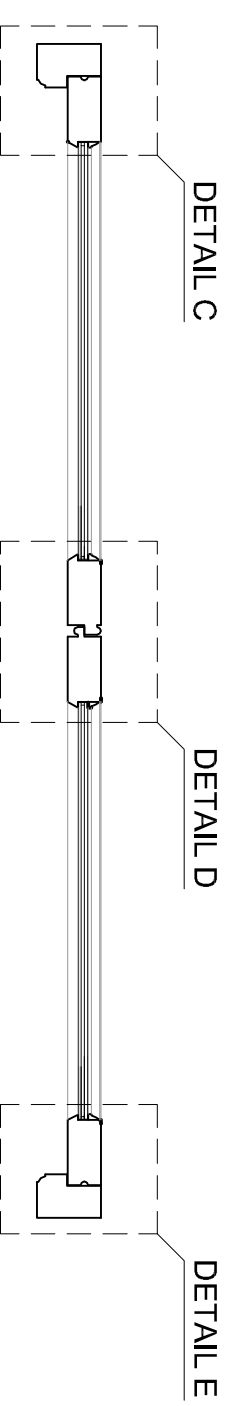


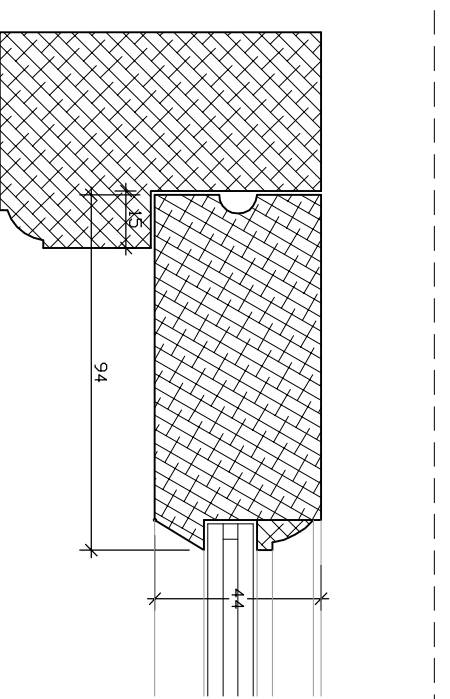
1 ELEVATION OF DOUBLE DOORS  
Scale: 1:10



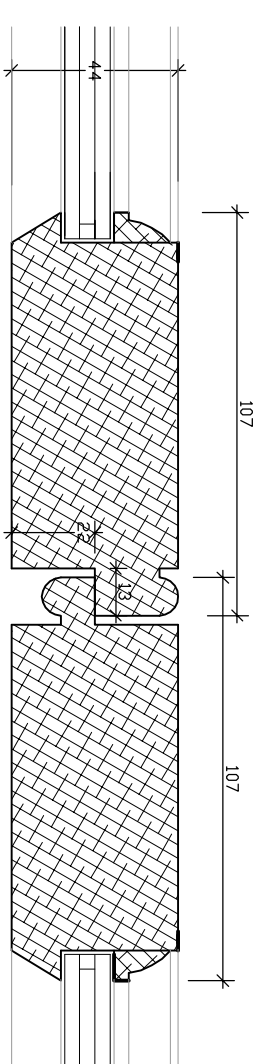
3 SECTION B-B  
Scale: 1:10



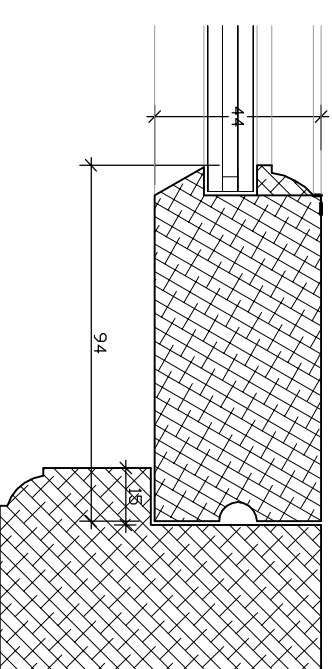
2 SECTION A-A  
Scale: 1:10



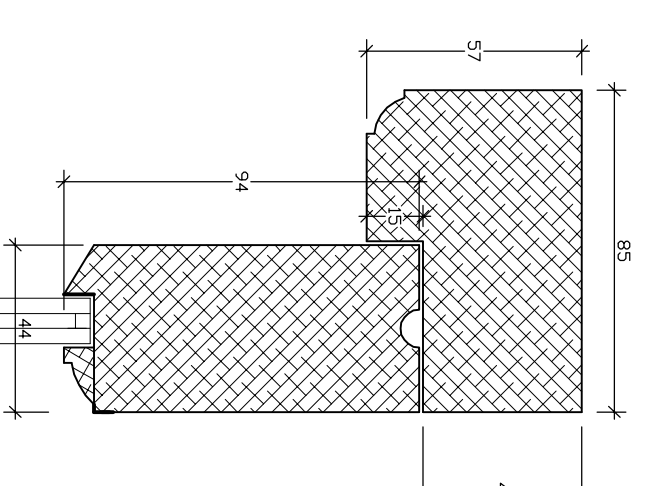
4 DETAIL C  
Scale: 1:2



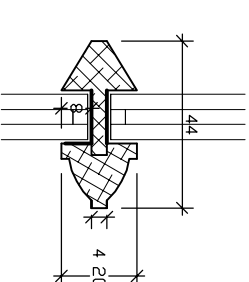
5 DETAIL D  
Scale: 1:2



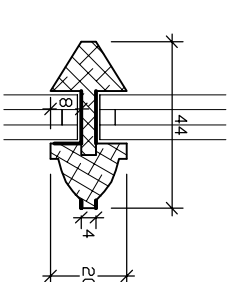
6 DETAIL E  
Scale: 1:2



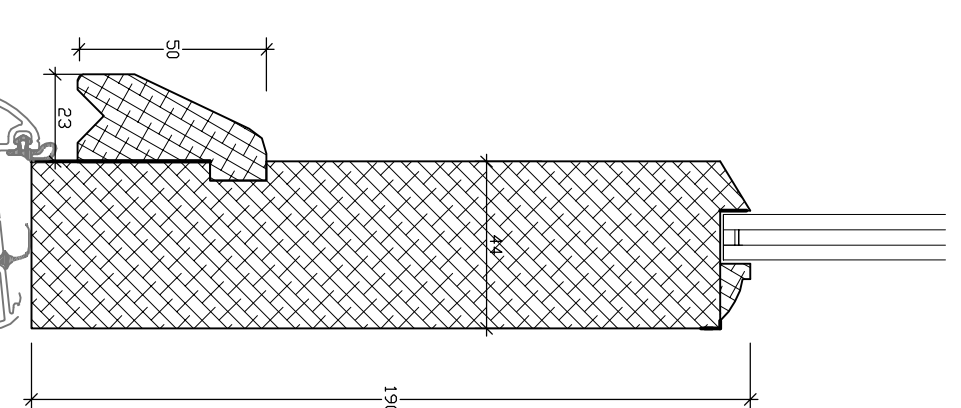
7 DETAIL F  
Scale: 1:2



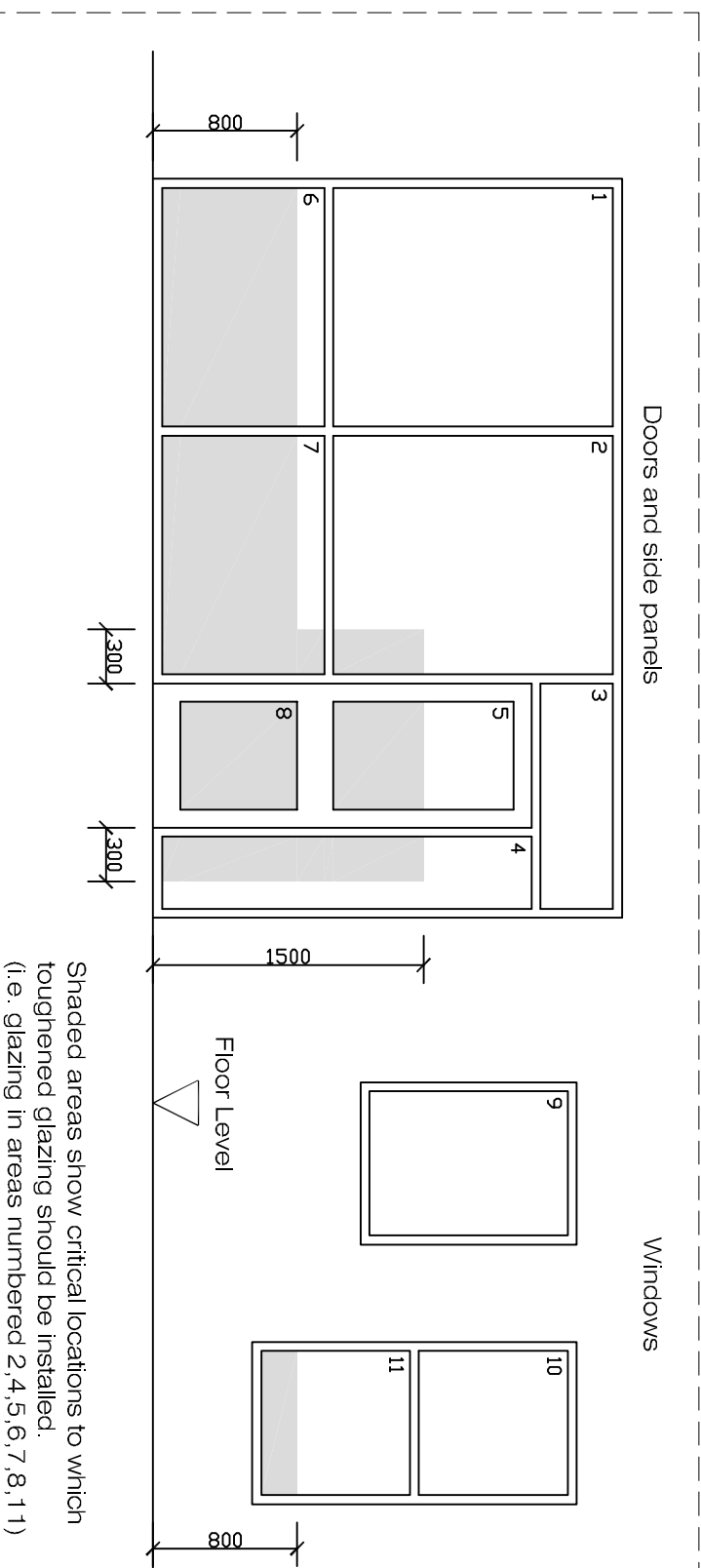
8 DETAIL G  
Scale: 1:2



9 DETAIL H  
Scale: 1:2



10 DETAIL J  
Scale: 1:2



11 CRITICAL LOCATIONS FOR SAFETY GLAZING  
Scale: N.T.S

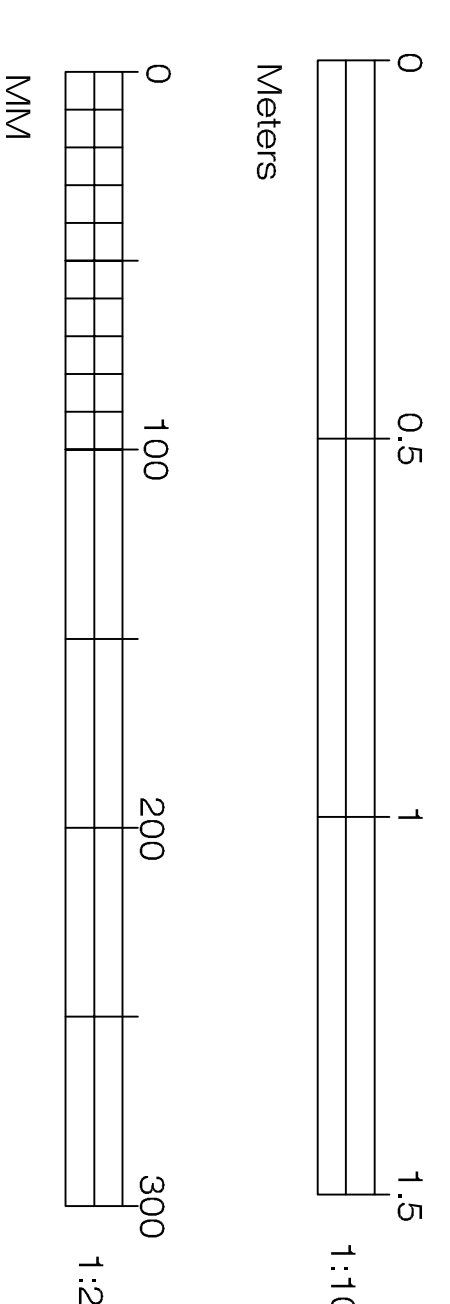
The following locations may be considered 'critical' in terms of safety:

- between finished floor level and 800mm above that level in internal and external walls and partitions.
- between finished floor level and 1500mm above that level in a door or in a side panel, close to outer edge of the door

Shaded areas show critical locations to which toughened glazing should be installed. (i.e. glazing in areas numbered 2,4,5,6,7,8,11)

**GENERAL NOTES:**

- Doors to be manufactured from budget hardwood with a painted finish.
- Glazing to be slimline double glazed units.
- Threshold to main entrance doors to be a slimline mobility easy access threshold door call by Stormguard or similar.
- Ironmongery to be confirmed.
- Joinery manufacturer to check all dimensions on site prior to manufacture.
- Manufacturer to allow for all necessary draught strips.



design

Client TKS DEVELOPMENTS	Drawing title EXTERNAL DOUBLE DOORS	Drawing No. 14_172_TKS.8.02.01
Project THE COACH HOUSE 18 ROSEBROFT AVENUE LONDON NW3 7QB	Drawn By QIB	Scale 1:10 & 1:2
DATE JAN 2015	Check By AN	Notes ALL DIMENSIONS TO FACE UNLESS OTHERWISE SPECIFIED. DIMENSIONS TO FACE UNLESS OTHERWISE SPECIFIED. THIS DRAWING IS UNCONTROLLED.