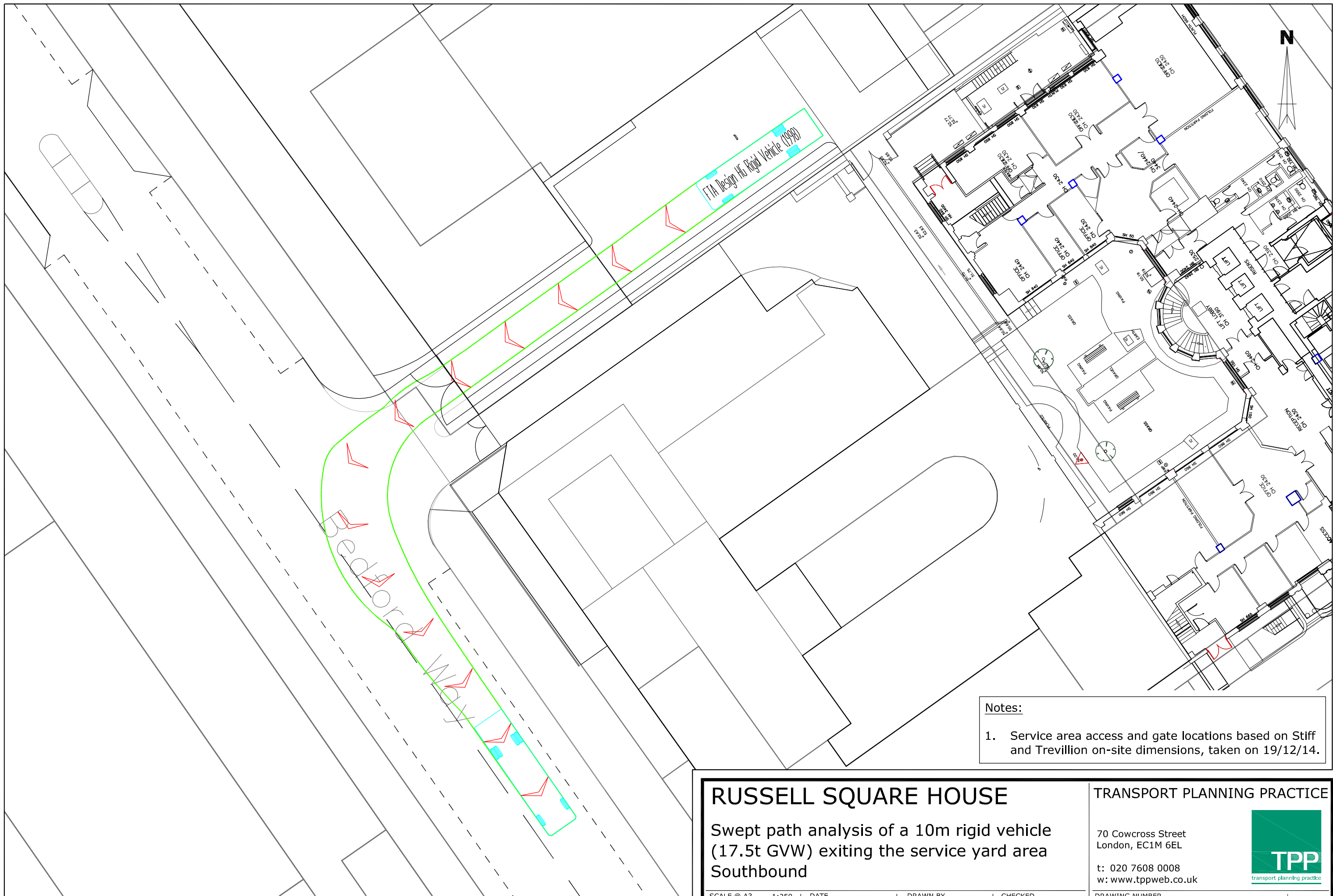


T:\30000_projects\30740 Russell Square House - Construction Access\ACAD\001 - 008.dwg



N

Notes:

1. Service area access and gate locations based on Stiff and Trevillion on-site dimensions, taken on 19/12/14.

This drawing has been prepared for planning purposes and should not be used for construction. It should be read in conjunction with TPP e-mail of 16/01/15.

Based on Stiff + Trevillion Architects layout, drawing number 3396-001. TPP REF - IN_01

RUSSELL SQUARE HOUSE

Swept path analysis of a 10m rigid vehicle (17.5t GVW) exiting the service yard area Southbound

SCALE @ A3	1:250	DATE	DRAWN BY	CHECKED
0 2.5 5m		15/01/15	TC	CW

TRANSPORT PLANNING PRACTICE

70 Cowcross Street
London, EC1M 6EL
t: 020 7608 0008
w: www.tppweb.co.uk



DRAWING NUMBER	REV
30740/AC/004	-