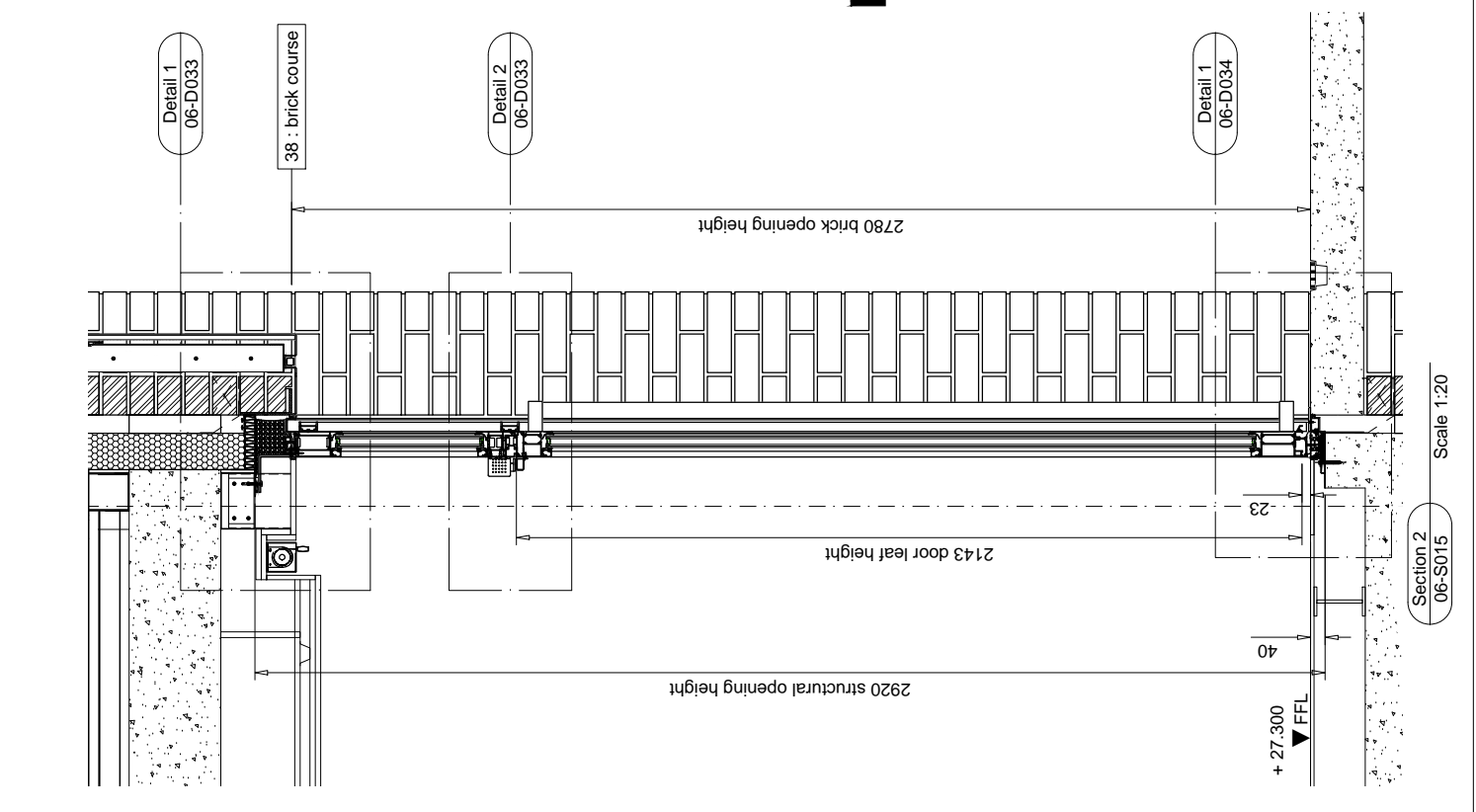
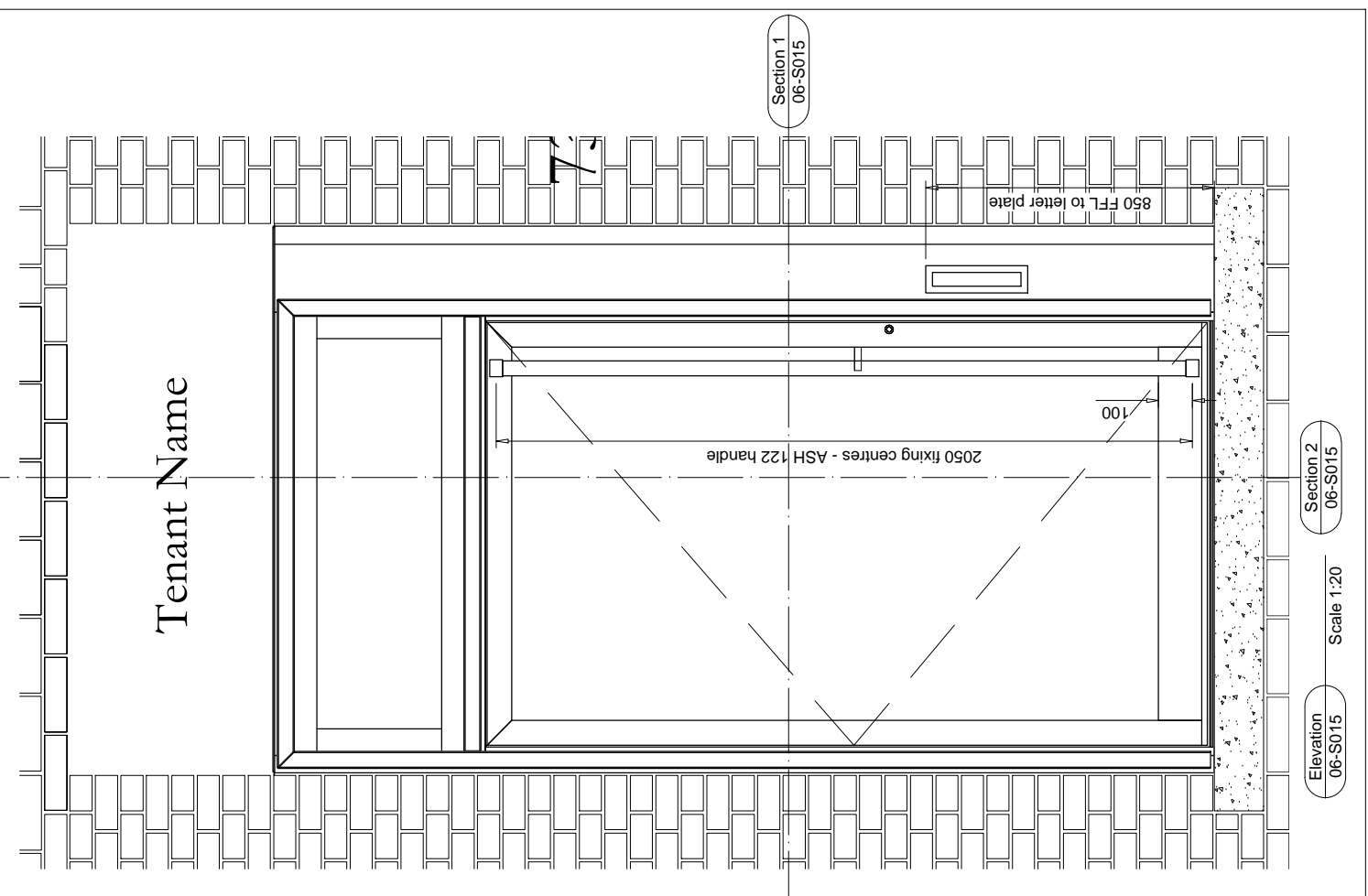
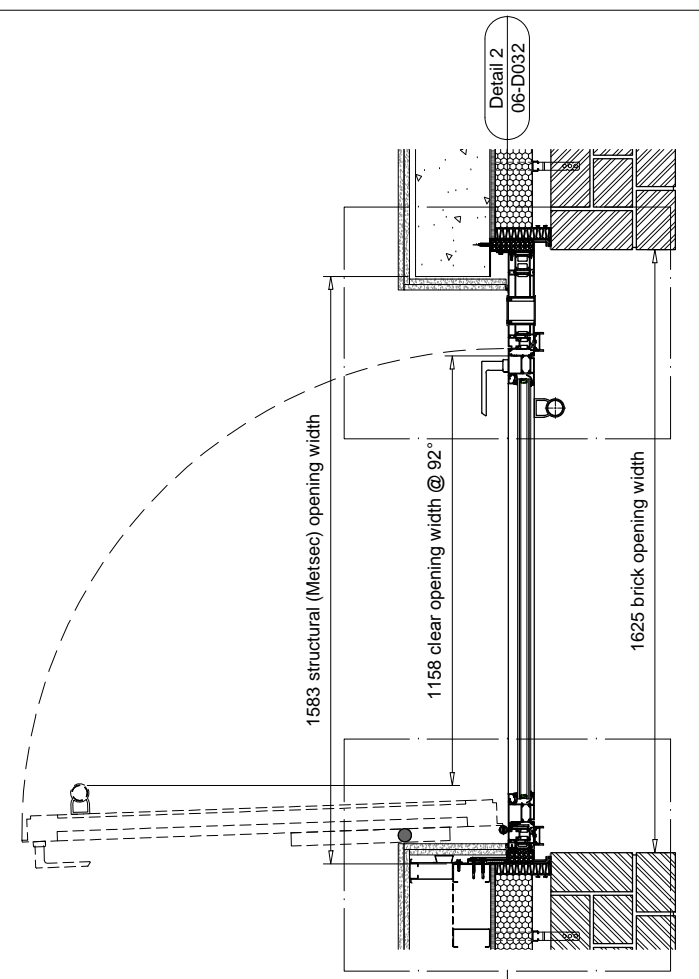


Glazing Specification: Coatings to be in accordance with performance specification.	
Glass spec. (door)	10.8/16/8.8 IGU.
Outer pane	10.8mm clear laminate float glass (arrissed edges) with HP 70/39 neutral coating to face 2.
Cavity	16mm 90% argon filled cavity with black spacer.
Inner pane	8.8mm clear laminate float glass (arrissed edges) with acoustic interlayer.
Unit to achieve: U-value 1.1W/m ² K - Rw Sound reduction 43dB	
Glass spec. (window)	10.8/16/8.8 IGU.
Outer pane	10mm clear heat strengthened glass (arrissed edges) with HP 70/39 neutral coating to face 2.
Cavity	16mm 90% argon filled cavity with black spacer.
Inner pane	8.8mm clear laminate float glass (arrissed edges) with acoustic interlayer.
Unit to achieve: U-value 1.1W/m ² K - Rw Sound reduction 43dB	
Metalwork Specification:	
Aluminium flashings	PPC finish - Interpon D2525 Noir 2100 Sable matt
Brackets	Aluminium or stainless steel as required
General:	
Fixings	All fixings to be austenitic stainless steel unless otherwise noted.
Silicone sealants (frame perimeter)	Black - Dow Corning 791 or similar

Door Reference	Door Specification:
DG.01	Window Type 18
Location: Ground floor (DG.01)	Quantity: 1
Structural (Metsec) opening	Schuco ADS 70 HI thermally broken aluminium door frame. DIN RH open-in door leaf.
Width (mm)	1583
Height (mm)	2780
Cill Level (m)	+ 27.300
Structural (Metsec) opening	Schuco AWS 70 HI thermally broken fixed window.
Width (mm)	1583
Height (mm)	2920
Cill Level (m)	+ 27.260
Door Specification:	PPC finish (inside and outside) - Interpon D2525 Noir 2100 Sable matt.
Location: Ground floor (DG.01)	Ironmongery (door): Standard security (SBD compliant - not certified) Schuco multi-point hook lock - item 241 735. Europrofile cylinder. Electric strike to be linked to door entry system.
Quantity: 1	Schuco lever handle (inside only) - item 240 153. Colour Black - RAL 9005.
	External handle - ASH 122 with 2050mm fixing centres. Colour Noir 2100 Sable matt
	Schuco lock rosettes - round external, oval internal. Colour Black - RAL 9005.
	Dormia TS93 overhead, surface mounted door closer. Colour Black - RAL 9005.
	eisenware vertical letter plate: S5999-VPL. Colour Noir 2100 Sable matt
	Door entry control panel (by Antron Security).
	Ironmongery (window): N/A.
	Nominal value Uw 1.8 W/m ² K (in accordance with EN ISO 10077-1:2006).
	Weathertightness (door): 5A (in accordance with DIN EN 12208).
	Weathertightness (window): 9A (in accordance with DIN EN 12208).



REVISIONS			
C3	12-12-2014	PJC	Feature caps removed from RHS of door panel.
CHKD			
C2	4-12-2014	PJC	Letter plate move down. Control panel removed (to be located in brickwork).
CHKD			
C1	27-11-2014	PJC	Letter plate, control panel and door handle locations added.
CHKD			
A2	17-10-2014	PJC	Updated
CHKD			

NOTES	
1.	NO DIMENSIONS ARE TO BE SCALED FROM THIS DRAWING.
2.	DISCREPANCIES IN SITE DIMENSIONS TO BE REPORTED TO ENGLISH ARCHITECTURAL GLAZING LTD.
3.	ALL DIMENSIONS IN MILLIMETERS.
4.	ALL LEVELS IN METRES.
5.	SYSTEM:
6.	FINISHES - INTERNAL:
	- EXTERNAL:

E.A.G. DRAWINGS ISSUED FOR:
CONSTRUCTION

Client:	Knight Harwood
Project:	73 Charlotte Street
Site:	London, W1T 4RH
Title:	Door/Window Schedule - Ground Floor Type 18 door - Commercial Entrance

Drawn:	PJC
Date:	01-09-2014
Design Check:	
CAD Ref:	Pack 6/EAG-06
Scales:	1:20 @ A3
Project/Drawing No.:	3233/EAG-06-S015
Revision:	C3



THIS DRAWING REMAINS THE PROPERTY OF ENGLISH ARCHITECTURAL GLAZING LIMITED AND MAY NOT BE COPIED, REPRODUCED OR ITS CONTENTS DIVULGED WITHOUT PRIOR WRITTEN CONSENT FROM ENGLISH ARCHITECTURAL GLAZING LIMITED.

ENGLISH ARCHITECTURAL GLAZING LIMITED
Chiswick Avenue
Midsenhall
Suffolk
IP28 7AY
Telephone (01638) 510000
Facsimile (01638) 510400