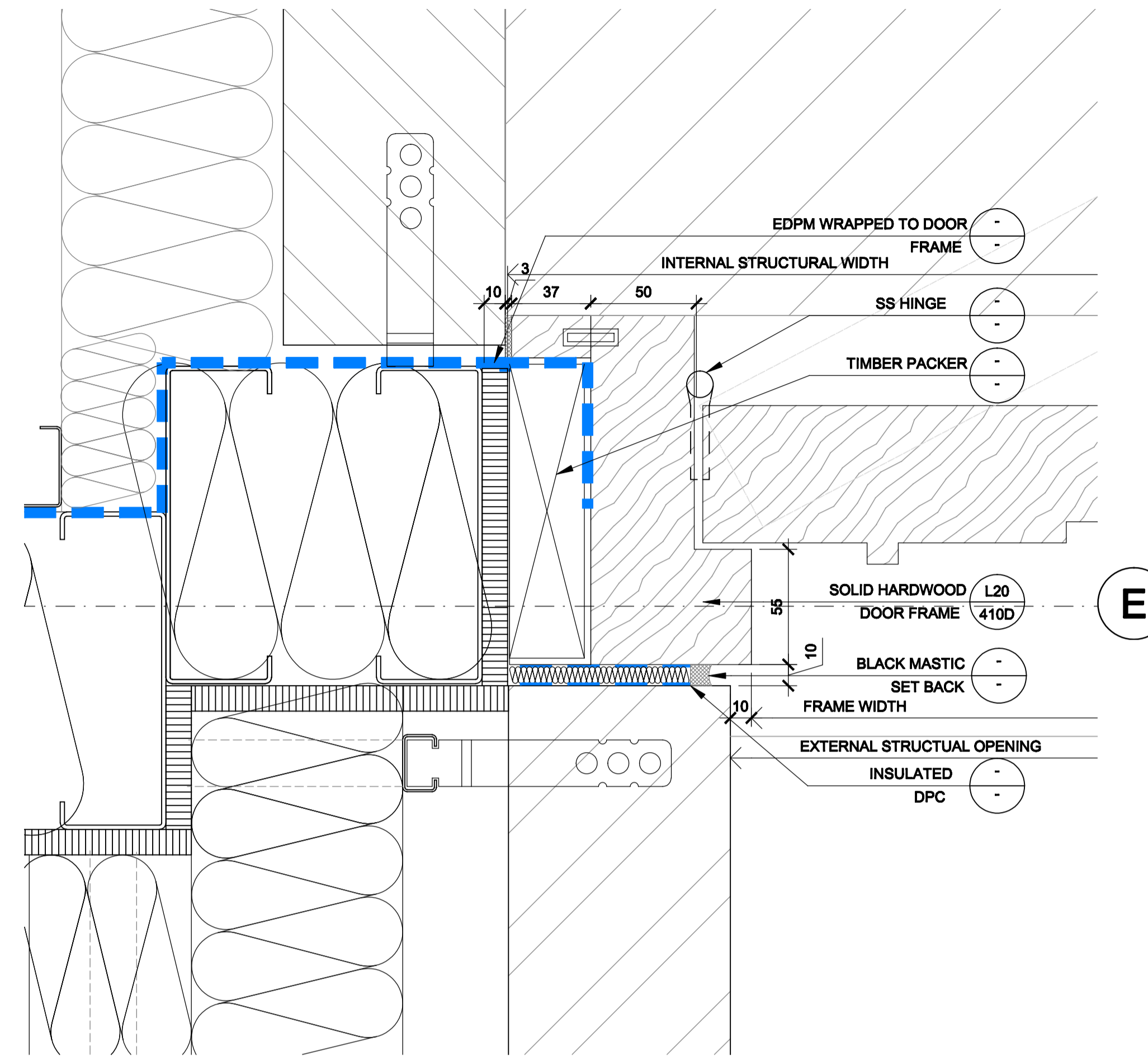
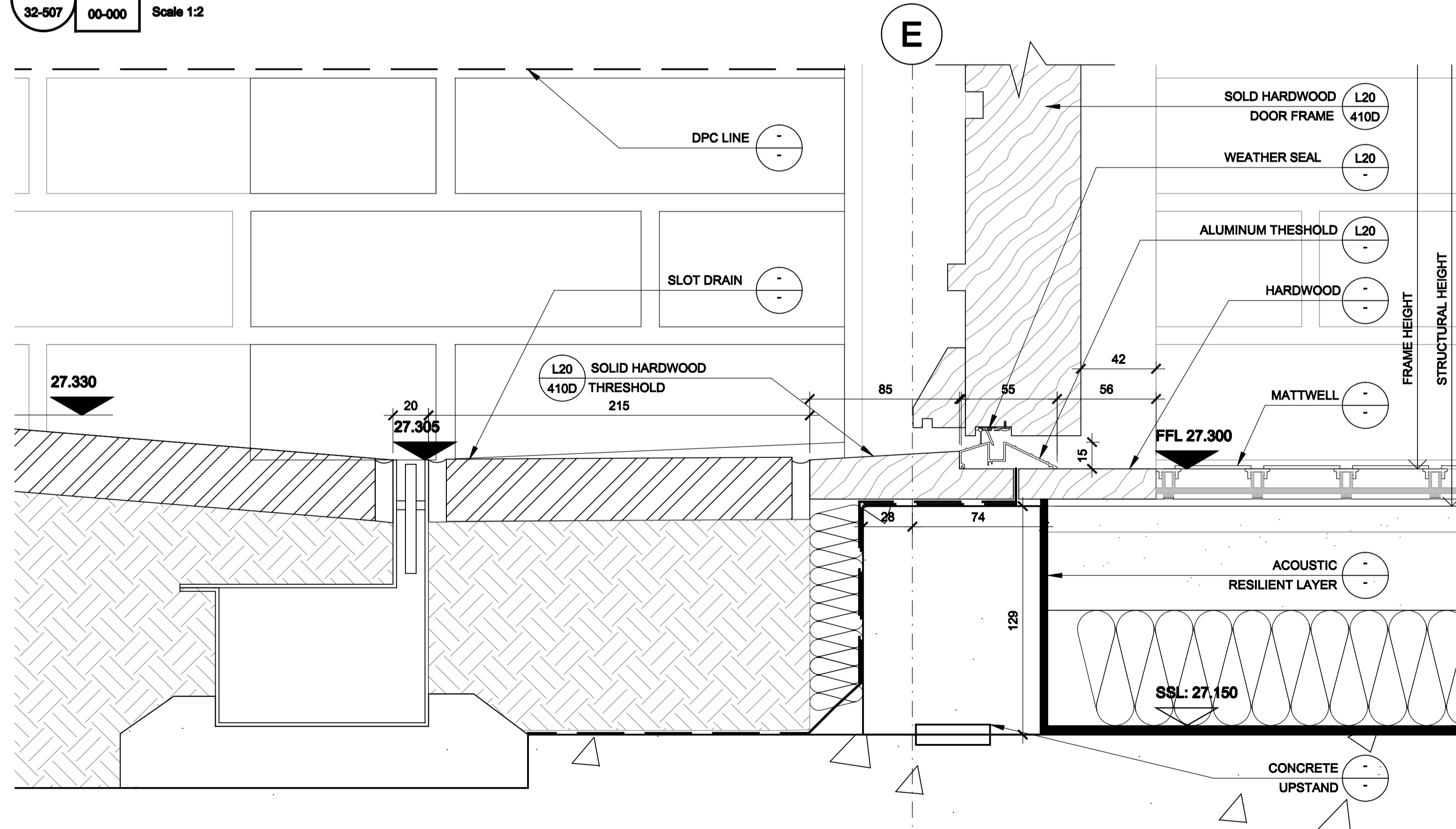


01 00 DOOR DETAIL 01 - SECTION
32-507 00-000 Scale 1:2

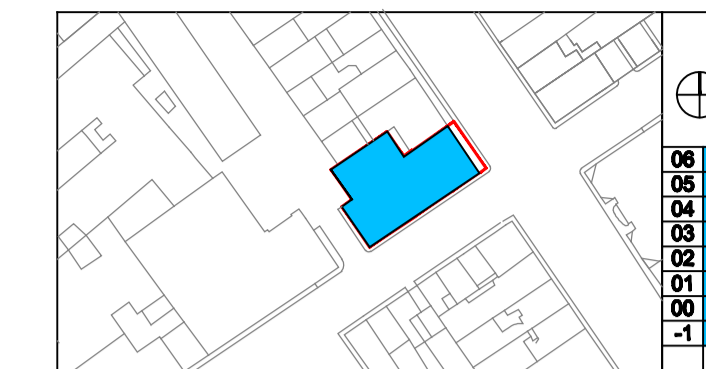


03 00 DOOR DETAIL 03 - PLAN
32-507 00-000 Scale 1:2



02 00 DOOR DETAIL 02 - SECTION
32-507 00-000 Scale 1:2

Veretec



- Notes
1. TO BE READ IN CONJUNCTION WITH GA PLANS, DOOR SPECIFICATION AND VERETEC DOOR SCHEDULE 21164-SD.105
 2. ALL DIMENSIONS TO BE CHECKED ON SITE PRIOR TO FABRICATION

Revisions By Authorised

Veretec

CDM RISKS & HAZARDS			
Specific risk assessments relating to this drawing are:			
203	209	212	310
311	-	-	-

Read in conjunction with the Project Risk Assessment Schedule.

Important note
All dimensions in millimetres. Where dimensions are not given, drawings must not be scaled and the matter referred back to Veretec Limited.
All dimensions and conditions are to be checked on site by the contractor prior to preparing drawings or commencing any work. The contractor is responsible for checking that there is no conflict between site dimensions and drawn dimensions.
In the event of any detail or dimensional conflict between Veretec Limited drawings, the matter must be referred back to Veretec Limited for clarification.

Veretec Limited.
36-40 York Way
London N1 6AS
Tel: +44 (0)20 7843 3199
Fax: +44 (0)20 7843 3001
Email: london@veretec.co.uk
Web: www.veretec.co.uk

Client
KNIGHT HARWOOD

Project
73 CHARLOTTE STREET

Title
COMMUNAL DOOR DETAILS (SHEET 02)

Date	Drawn	Checked	Authorised
JAN 2015	SPF	KM	KM

Scale
1:10@A1

Issue status

CDT REVIEW

Drawing number	Rev
21164-09-AR-32-507	-

Client Drawing number