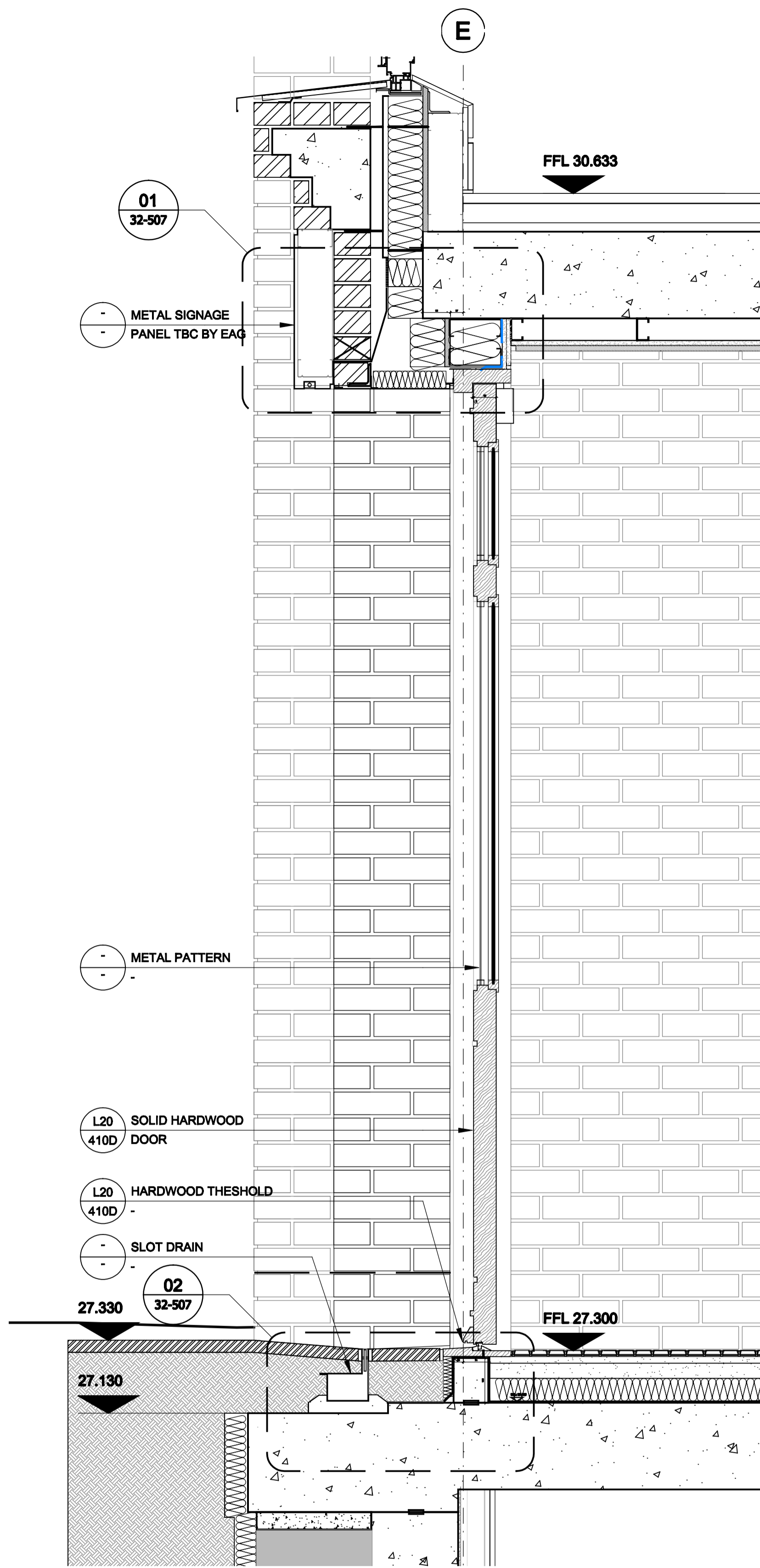
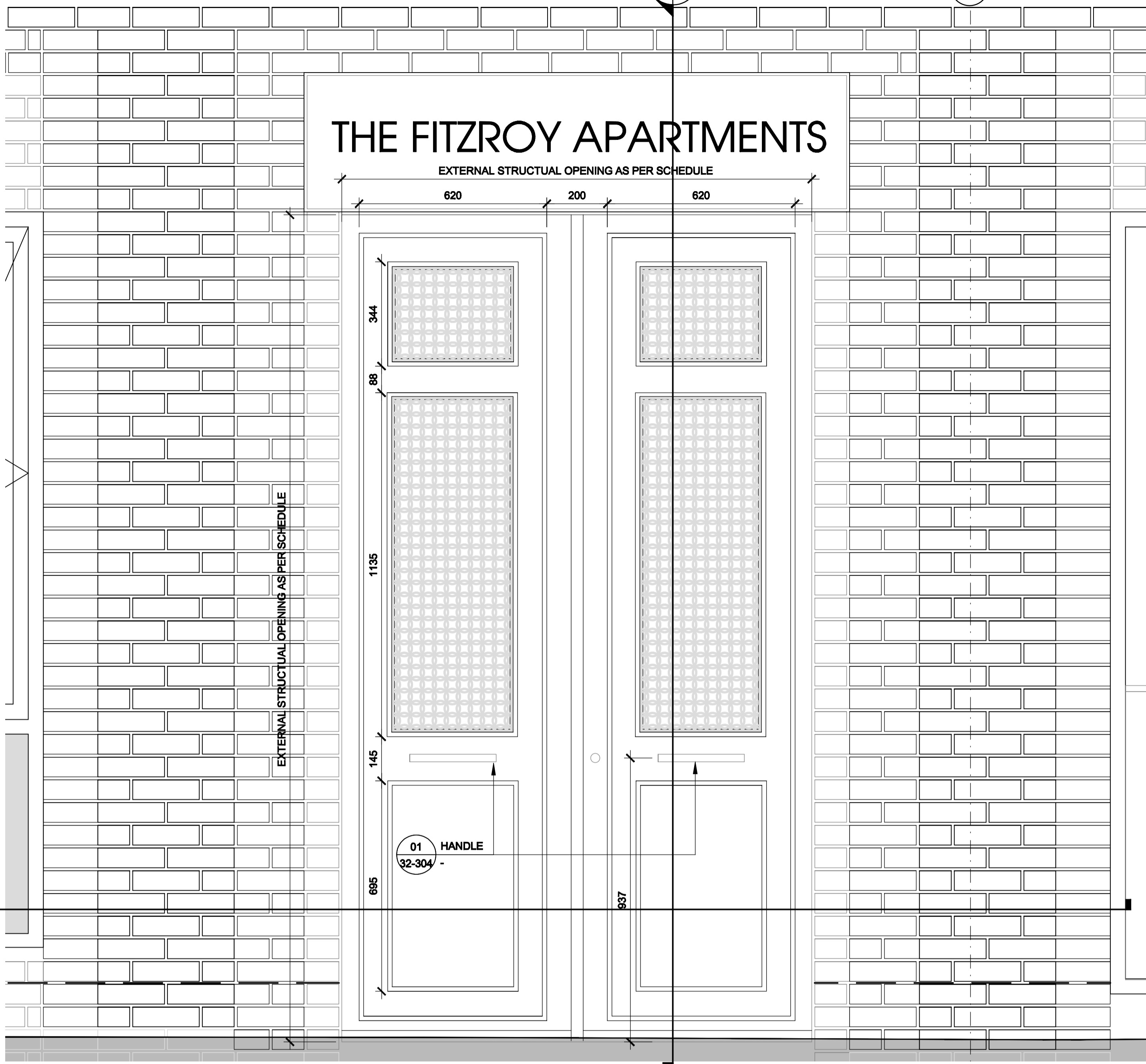


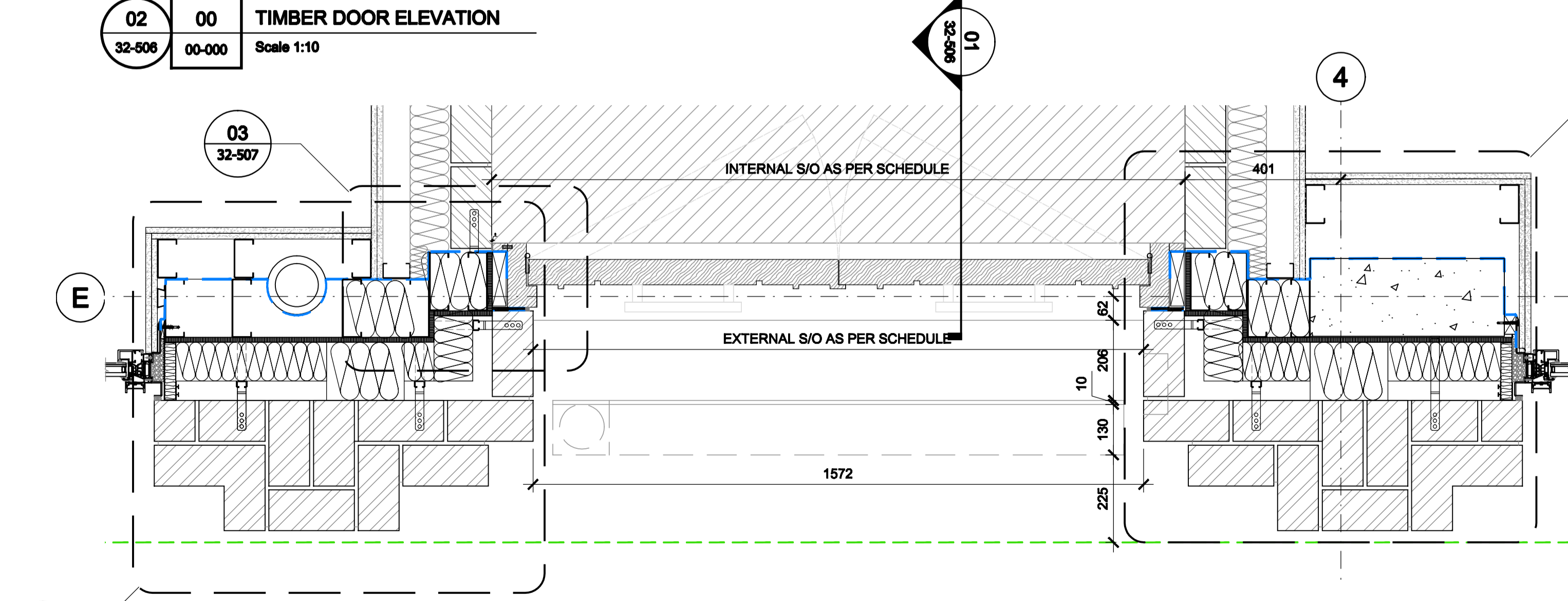
Notes
 1. TO BE READ IN CONJUNCTION WITH GA PLANS, DOOR SPECIFICATION AND VERETEC DOOR SCHEDULE 21164-SD.105
 2. ALL DIMENSIONS TO BE CHECKED ON SITE PRIOR TO FABRICATION



01 00 TIMBER DOOR SECTION
 32-506 00-000 Scale 1:10



02 00 TIMBER DOOR ELEVATION
 32-506 00-000 Scale 1:10



03 00 TIMBER DOOR PLAN
 32-506 00-000 Scale 1:10

Revisions By Authorized

CDM RISKS & HAZARDS			
Specific risk assessments relating to this drawing are:			
203	209	212	310
311	-	-	-

Read in conjunction with the Project Risk Assessment Schedule.

Important note
 All dimensions in millimetres. Where dimensions are not given, drawings must not be scaled and the matter referred back to Veretec Limited.
 All dimensions and conditions are to be checked on site by the contractor prior to preparing drawings or commencing any work. The contractor is responsible for checking that there is no conflict between site dimensions and drawn dimensions.
 In the event of any detail or dimensional conflict between Veretec Limited drawings, the matter must be referred back to Veretec Limited for clarification.

Veretec Limited.
 36-40 York Way
 London N1 9AB
 Tel: +44 (0)20 7843 3199
 Fax: +44 (0)20 7843 3001
 Email: london@veretec.co.uk
 Web: www.veretec.co.uk

Client
 KNIGHT HARWOOD

Project
 73 CHARLOTTE STREET

Title
 COMMUNAL DOOR DETAILS (SHEET 01)

Date	Drawn	Checked	Authorised
JAN 2015	SPF	KM	KM

Scale
 1:10@A1

Issue status

CDT REVIEW

Drawing number
 21164-09-AR-32-506

Client Drawing number