

REFER TO ELECTRICAL SERVICES LAYOUT DRAWINGS FOR LIGHTING SCOPE AND SPECIFICATIONS. QUANTITY OF M&E FIXTURES & CEILING PENETRATIONS TO BE DETERMINED FROM MEP DRGS PENDING FINAL SETTING OUT.

© COPYRIGHT Mace Group  
 NOT TO BE REPRODUCED WITHOUT WRITTEN PERMISSION. BECAUSE OF POSSIBLE SCALING ERRORS IN ELECTRONIC AND HARD COPY REPRODUCTION DO NOT SCALE FOR CONSTRUCTION PURPOSES. ALL DIMENSIONS TO BE CHECKED & VERIFIED ON SITE PRIOR TO CONSTRUCTION.

**Safety first. Second nature.**

Safety, Health and Environment Information

The significant unusual hazards / risks associated with this type of work are noted as:

CONSTRUCTION		
CI	CDM32	FIXING TO HOLLOW POTS
CH		
OPERATION AND MAINTENANCE		
OI		NONE
OII		
DISMANTLING/DEMOLITION		
DI		NONE
DII		

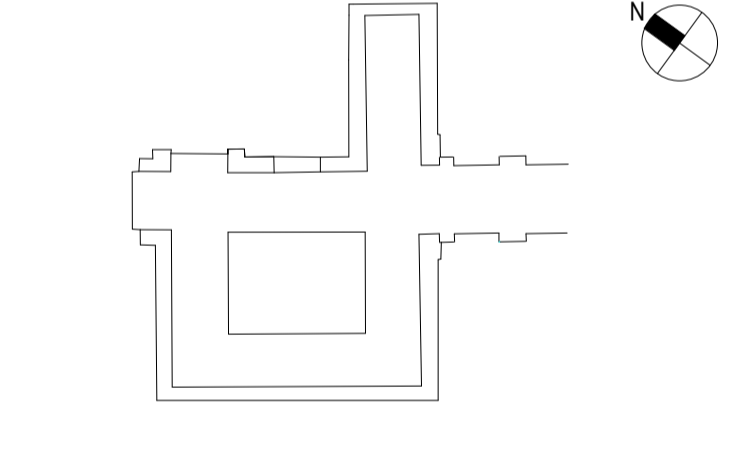
NOTE - TO BE READ IN CONJUNCTION WITH RISK REGISTER

CEILING LEGEND

1	PLASTERBOARD SOFFIT K10/2202C
2	PLASTERBOARD WITH EDGE TRIM DETAIL - K10/220A
3	39MM ACOUSTIC PLASTER ON EXISTING SOFFIT - M22/120A. MAKE GOOD EXISTING EXPOSED MARGIN AS (10).
4	25MM ACOUSTIC PLASTER ON EXISTING SOFFIT - M22/120B. MAKE GOOD EXISTING EXPOSED MARGIN AS (10).
5	METAL PERFORATED SUSPENDED CEILING TILES - K40/115B PLY PATTERESSING WITHIN CEILING TILES WITH CUTS FOR M&E FIXTURES
7	VENTILATED ILLUMINATED CEILING - K40/115A - IN ABEYANCE PENDING CATERING CONSULTANT APPROVAL
8	PLASTERBOARD RAFT - K10/220B
9	PLASTERBOARD K10/220A WITH ACOUSTIC PLASTER M22/120B
10	EXISTING SOFFIT - MAKE GOOD & DECORATE AS FINISHES SCHEDULE
AP	DETAIL 09/762 - ACCESS PANEL 600mm x 600mm - K40/280A
AP	DETAIL 09/762 - ACCESS PANEL 300mm x 300mm - K40/280A
	RISER / SERVICE DUCT
	NEW CORNICE TO MATCH EXISTING (TAKE PROFILES IN EACH LOCATION) REFER ALSO DIA SPECIFICATION

3	19.12.14	NOTES ADDED AS HIGHLIGHTED REGARDING CORNICE RETENTION ETC. RE. LBC SUBMISSION. LEGEND ADDED. LIFT SHAFT ARRANGEMENT UPDATED. ACOUSTIC TREATMENT REDUCED TO ROOM 3.18. LEGEND ADDED	HT	EF/MD
2	21.11.14	CEILING TYPE 10 (EXISTING SOFFIT) INDICATED. RISERS/SERVICE DUCTS INDICATED. REFERENCE TO DETAILED W.C. GA NOTES ADDED. AMENDMENT TO ACCESS PANEL LOCATIONS.	HB	EF/MD
1	15.10.14	CONSTRUCTION ISSUE. 3.38 CEILING ADDED. 3.11 TYPE CHANGED.	HT	EF/LT

REV	DATE	DESCRIPTION	DWN	CHK/APP



PROJECT STATUS: CONSTRUCTION



PROJECT TITLE: SOAS INTO SENATE HOUSE MALET STREET LONDON, WC1E 7HU

DRAWING TITLE: PROPOSED LEVEL 3 REFLECTIVE CEILING PLAN

PROJECT NO.	DRAWN BY	DATE
28731	JB	05.08.13
CHK BY	DATE	
LT	05.08.13	
APPD BY	DATE	
CF	05.08.13	

PROJECT CODE	DISC.	VIEW TYPE	VIEW CAT.	LEVEL	DWG. NO.
SOAS - A	RCP - GEN - 03				275

1 of 1 1:100 @ A1 C 3

UNRESTRICTED

EXISTING CORNICE TREATMENT LEGEND:

- EXISTING CORNICE UNAFFECTED. NEW PARTITION/SCREEN SCRIBED AROUND. SEE DETAIL 01/707
- EXISTING CORNICE CUT AT NEW PARTITION/SCREEN.

CORNICE REMOVED AT NEW RISER FORMATION

ALL NEW ACOUSTIC PLASTER 300MM AWAY FROM EXISTING BEAMS AND WALLS

DRAWINGS LEGEND TO BE READ IN CONJUNCTION WITH ALL CONSULTANTS DRAWINGS

- 190 SERIES - DEMOLITION GA
- 210 SERIES - DEMOLITION GA
- 220 SERIES - GA's
- 250 SERIES - FIRE STRATEGY
- 260 SERIES - FLOOR FINISHES
- 270 SERIES - RCP'S
- 280 SERIES - FIXED FURNITURE
- 290 SERIES - PARTITIONS/DOORS/WINDOWS
- 300 SERIES - EXISTING ELEVATIONS
- 310 SERIES - DEMOLITION ELEVATIONS
- 320 SERIES - PROPOSED ELEVATIONS
- 350 SERIES - EXISTING ELEVATIONS
- 370 SERIES - PROPOSED SECTIONS
- 380 SERIES - PROPOSED COURTYARD SECTIONS
- 390 SERIES - PROPOSED SECTIONS

NEW CEILING TO BE KEPT AS TIGHT AS POSSIBLE TO NEW CONDUITS SUPPLIES TO LIGHTING TBC. APPROX DROP ASSUMED TO BE 60MM. NEW CORNICE TO MATCH EXISTING ARRANGEMENT SUBJECT TO REVIEW OF DETAIL OF LOWERED CEILING AT WINDOW HEAD. SECOND AND THIRD FLOOR EXISTING CORNICE VERTICAL SECTION APPROX. 70MM DEEP AT ABUTMENT TO WALL FEATURES.

GENERAL NOTE: LIGHTING SUPPLIES TO ROOMS, EXCEPT 3.01, 3.02 WILL BE PROVIDED IN CONDUIT WITHIN THE EXISTING SOFFIT FINISH. THE CONDUITS WILL RUN FROM ROOM TO ROOM PASSING THROUGH CORNICE FEATURES. TYPICALLY TWICE PER ROOM. CORNICE FEATURES IN SUCH OCCASIONS TO BE CAREFULLY CUT (TO MINIMAL WIDTH) AND SUBSEQUENTLY MADE GOOD TO MATCH THE EXISTING CORNICE PROFILE.

NEW WALL INTENDED TO BE INSERTED TO SUIT HEAD FIXING INTO EXISTING BEAM. LOCATION TO BE CONFIRMED BY OPENING UP

DETAILED RCP GA TO WCS REFER ALSO DRG 871

DETAILED RCP GA TO WCS REFER ALSO DRG 871

3.40 STAIR 10

3.41 LIFTS 8 & 9

3.43 FEMALE TOILETS

2925 AFFL

2400 AFFL

2963 AFFL

3.38 LOBBY/BREAK-OUT

3515 AFFL

3.44 DATA HUB

3.01 SEMINAR

3.02 SEMINAR

3.03 CORRIDOR

3.04 CORRIDOR

3.05 SEMINAR

3.06 SEMINAR

3.07 SEMINAR

3.08 LIFT LOBBY

3.09 SEMINAR

3.10 BREAK-OUT

3.16 LOBBY

3.15 STAIR 9

3.18 PROFESSIONAL SERVICES

3.13 DATA HUB

3.21 TEAPOINT & PRINT

3.22 ACAD OFFICE

3.23 ACAD OFFICE

3.24 ACAD OFFICE

3.25 ACAD OFFICE

3.26 ACAD OFFICE

3.27 ACAD OFFICE

3.28 ACAD OFFICE

3.29 GTA'S

3.30 ACAD OFFICE

3.31 ACAD OFFICE

3.32 ACAD OFFICE

3.33 ACAD OFFICE

3.34 ACAD OFFICE

3.35 ACAD OFFICE

3.36 ACAD OFFICE

3.37 ACAD OFFICE

3.46 ACAD OFFICE

3.52 STORE

3.54 CORRIDOR