

PLY PATTERNS
 1 - 750 TO 1950mm AFFL
 2 - FFL TO 2450mm AFFL
 PATTERNING HEIGHT / SIZE TO BE CONFIRMED ON SITE

305A
 EXISTING AND RELOCATED DOOR REFER TO SCHEDULE:
 28731-SOAS-A-SHL-GEN-XX-911

305A
 PROPOSED NEW DOOR REFER TO SCHEDULE:
 28731-SOAS-A-SHL-GEN-XX-912

© COPYRIGHT Mace Group
 NOT TO BE REPRODUCED WITHOUT WRITTEN PERMISSION.
 BECAUSE OF POSSIBLE SCALING ERRORS IN ELECTRONIC AND HARD COPY
 REPRODUCTION DO NOT SCALE FOR CONSTRUCTION PURPOSES.
 ALL DIMENSIONS TO BE CHECKED & VERIFIED ON SITE PRIOR TO CONSTRUCTION.

Safety first. Second nature.

Safety, Health and Environment Information

The significant unusual hazards / risks associated with this type of work are noted as:

CONSTRUCTION	
CI	NONE
CII	
OPERATION AND MAINTENANCE	
OI	NONE
OII	
DISMANTLING/DEMOLITION	
DI	NONE
DII	

NOTE - TO BE READ IN CONJUNCTION WITH RISK REGISTER

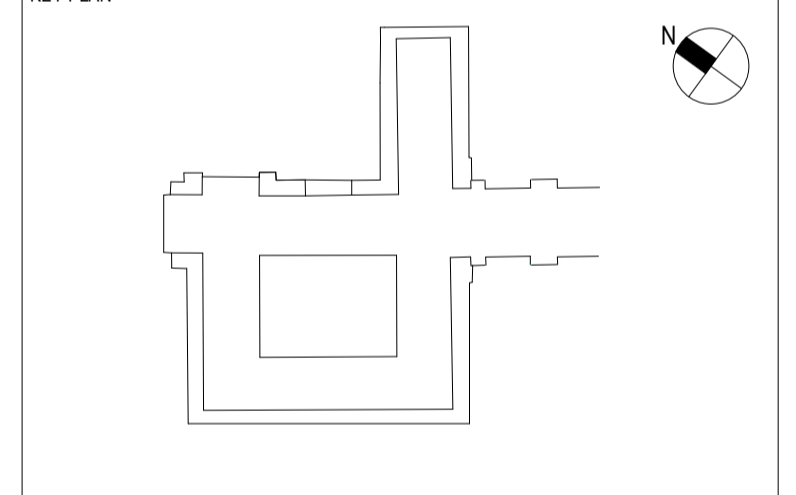
- LEGEND**
- 1 K10125A GYPFWALL CLASSIC (BG type A206186) 60MIN FIRE RATED - 100MM OVERALL. REF DWG 701
 - 2 K10125B GYPFWALL CLASSIC (BG type A206003) 60MIN FIRE RATED - 100MM OVERALL. REF DWG 702
 - 3 K10145A SHAFTWALL (A306030b) 120MIN FIRE RATED - NOMINAL 107MM OVERALL. REF DWG 703
 - 4 K10165A GYPLINER UNIVERSAL (BG type B226008A) - NOMINAL 60MM OVERALL. REF DWG 704
 - 5 K10125C GYPFWALL CLASSIC (BG type A206142) 60MIN FIRE RATED - NOMINAL 122MM OVERALL. REF DWG 705
 - 6 L20045A ACOUSTIC OPERABLE WALL-SEE DRG SOAS-A-DET-GEN-ZZ-756
 - 7 K30130A DOUBLE GLAZED PARTITIONS & DOUBLE GLAZED FLUSH DOORS
 - 8 K30130C SINGLE GLAZED PARTITIONS WITH SLIDING DOORS
 - 9 K10155B GYPLINER IWL (BG type B226003D) 30MIN FIRE RATED - NOMINAL 95MM OVERALL
 - 10 K10165A GYPLINER IWL (BG type B226003A) 30MIN FIRE RATED - NOMINAL 95MM OVERALL
 - 11 K30130A SOLID PANEL
 - 12 F10355B 100MM CONCRETE BLOCKWORK TO LOWER GROUND TOILETS AND INFILL OF INTERNAL OPENINGS UP TO 2.9M
 - 13 F10356A 140 MM CONCRETE BLOCKWORK FOR OPENINGS ABOVE 2.9M HIGH
 - 14 F10355B 75MM CONCRETE BLOCKWORK WHERE REQUIRED
 - 15 F10355C CONCRETE BLOCKWORK
 - 16 L200400 FULL HEIGHT GLAZED CURTAIN WALLING SCREEN
 - 17 K10125E GYPFWALL CLASSIC (BG type A206015) 60MIN FIRE RATED - NOMINAL 122MM OVERALL
 - 18 K10125D GYPFWALL CLASSIC (BG type A206079) 120MIN FIRE RATED - NOMINAL 122MM OVERALL

SKE-? SKIRTING TO MATCH EXISTING FOR SKIRTING TYPES REFER TO DRAWING SOAS-A-DET-GEN-XX-741
 SKN-? NEW SKIRTING PROFILE

SKIRTINGS IN ABEYANCE

SG-LG29-1 LOUVRE/GRILLES TAGS REFER 28731-SOAS-A-SHL-GEN-XX-918
 W-LG12-3 WINDOW TAGS REFER 28731-SOAS-A-SHL-GEN-XX-913/914

REV	DATE	DESCRIPTION	DL	LTGM
1	03.10.14	CONSTRUCTION ISSUE: PARTITIONS UPDATED, SKIRTINGS AND DETAIL REFS SHOWN		
2	14.11.14	LEVELS UPDATED/ LOUVRES & GRILLES REFERENCES ADDED/ WALL TYPE LEGEND SHORTENED & FIRE RATINGS ADDED, SOME WALL AND SKIRTING TYPES CHANGED, PARTITIONS ACOUSTIC & FIRE REQUIREMENTS NOTE ADDED, FIRE & ACOUSTIC BARRIER NOTE ADDED.	GM	LTMD
3	19.12.14	DOOR CHANGES SINCE CONTRACT ISSUE T2 AND NOTES ADDED AS HIGHLIGHTED REGARDING EXISTING SKIRTING ETC. RE: LBC SUBMISSION IN ABEYANCE NOTES ADDED. LIFT SHAFT UPDATED	JU	EFMD



PROJECT STATUS: **CONSTRUCTION**



155 Moorgate, London, EC2M 6XB
 www.macegroup.com

PROJECT TITLE: **SOAS INTO SENATE HOUSE MALET STREET LONDON, WC1E 7HU**

DRAWING TITLE: **LEVEL 2 DOOR/WINDOW/PARTITION KEY PLAN**

PROJECT NO.	DRAWN BY	DATE
28731	DC	25/07/13
	CHK BY	DATE
	LT	25/07/13
	APP'D BY	DATE
		25/07/13

PROJECT CODE	DISC	VIEW TYPE	VIEW CAT	LEVEL	DWG. NO.
SOAS - A	-	PLN	-	02	294
SHEET NO.	SCALE	ORIG. SHEET SIZE	REV.		
1 of 1	As indicated	A1	C 3		

INFORMATION HANDLING CLASSIFICATION: **UNRESTRICTED**

- EXISTING SKIRTING TREATMENT LEGEND:**
- EXISTING TIMBER/PLASTER SKIRTING UNAFFECTED. NEW PARTITION/SCREEN SCRIBED AROUND.
 - EXISTING TIMBER/PLASTER SKIRTING CUT AT NEW PARTITION/SCREEN.
 - EXISTING TERRAZZO SKIRTING. UNAFFECTED. NEW PARTITION/SCREEN SCRIBED AROUND.
 - EXISTING SKIRTING & DADO UNAFFECTED. NEW PARTITION/SCREEN SCRIBED AROUND.

CHANGES BETWEEN T2 AND C3:
 1-NEW DOOR 120MIN FR ADD TO LOCATION: 2.61A. 2- NEW DOOR 120MIN FR CHANGE LOCATION AND SIZE, IN LOCATION: 2.06A. 3-120MIN FR DOOR CHANGE FROM SINGLE LEAF TO DOUBLE IN LOCATION: 2.59A

REFER TO 'SOAS-A-DET-GEN-XX-755' (PROPOSED DRY LINING DETAILS) FOR DETAILS OF FIRE AND ACOUSTIC BARRIERS BELOW SUSPENDED FLOORS AND BELOW HOLLOW POT SOFFITS.

THE ACOUSTIC AND FIRE RATING REQUIREMENT OF THE PARTITIONS MAY BE LESS THAN WHAT IS STATED IN THE SPECIFICATION, DEPENDING ON SPECIFIC LOCATION