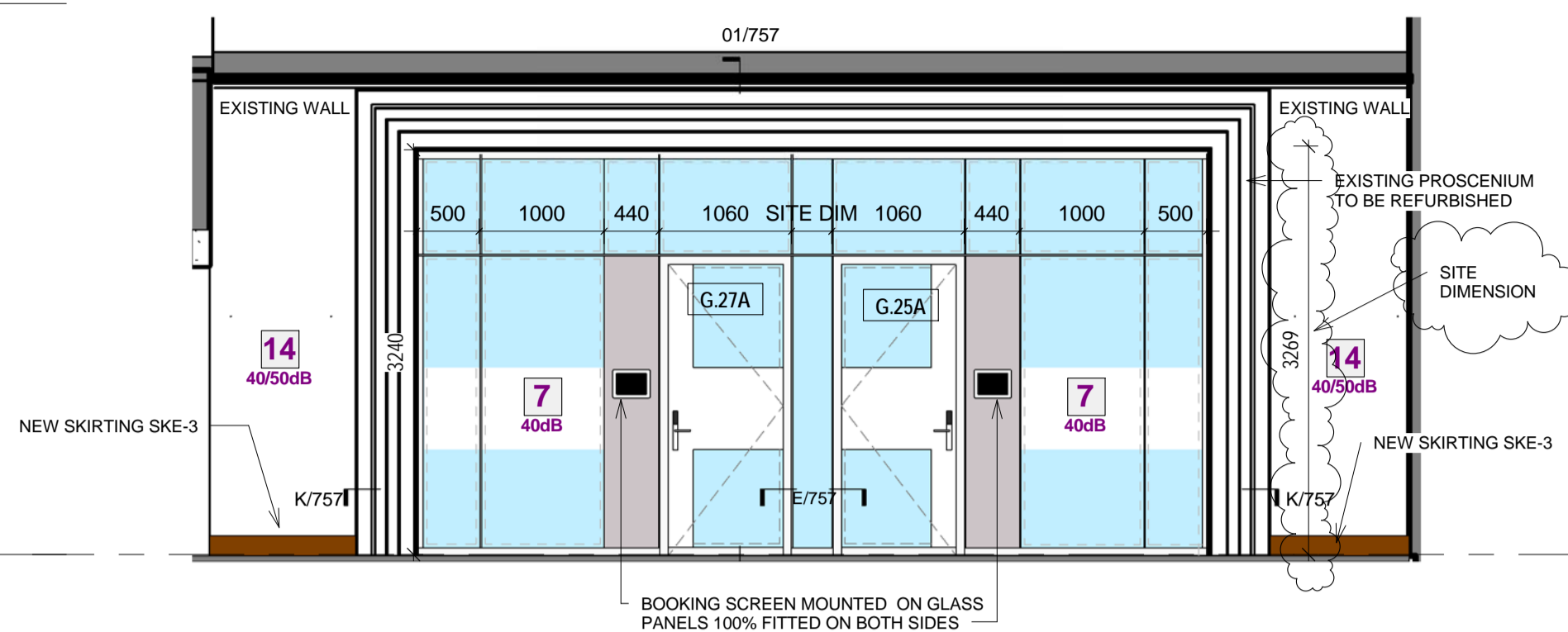
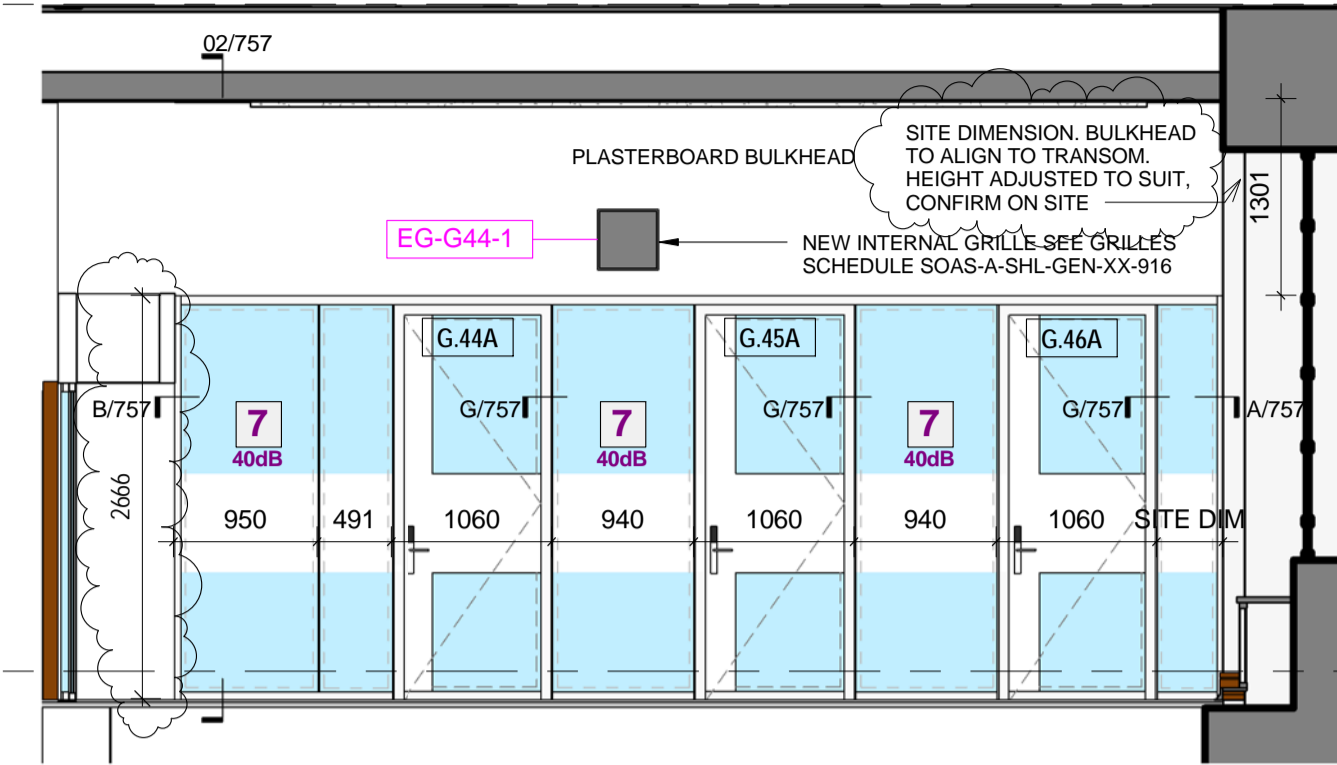


1 G.10
1:50



2 G.25 & G.27
1:50



7 G.44, 45 & 46
1:50

PLY PARTESSES
 1 - FFL TO 1950mm AFFL
 2 - FFL TO 2450mm AFFL
 PATTERNING HEIGHT / SIZE TO BE CONFIRMED ON SITE

EXISTING AND RELOCATED DOOR REFER TO SCHEDULE:
 28731-SOAS-A-SHL-GEN-XX-911

PROPOSED NEW DOOR REFER TO SCHEDULE:
 28731-SOAS-A-SHL-GEN-XX-912

FOR DETAIL REFERENCES REFER TO DRAWING
 28731-SOAS-A-DET-GEN-XX-757

NOTE:
 MINIMUM EFFECTIVE CLEAR WIDTH THROUGH
 SINGLE LEAF DOOR OR ONE LEAF OF A DOUBLE
 LEAF DOOR SHOULD BE 825MM.

GOAL POST STRUCTURE FINAL DETAILS - AS
 DETAIL 04/757 - TO BE CONFIRMED IN SE
 PACKAGE. SUB-CONTRACTOR FOR PACKAGE
 CONCEALING GOAL POST SOLUTION TO
 OBTAIN PREFERRED PARTITION SYSTEM
 SUPPLIERS REVIEW OF ALTERNATIVE
 SOLUTIONS FOR CONCEALED SUPPORT TO
 GLAZED PARTITION SYSTEM FOR REVIEW AS
 ALTERNATIVE TO HR POSTS.

© COPYRIGHT Mace Group
 NOT TO BE REPRODUCED WITHOUT WRITTEN PERMISSION.
 BECAUSE OF POSSIBLE SCALING ERRORS IN ELECTRONIC AND HARD COPY
 REPRODUCTION DO NOT SCALE FOR CONSTRUCTION PURPOSES.
 ALL DIMENSIONS TO BE CHECKED & VERIFIED ON SITE PRIOR TO CONSTRUCTION.

Safety first. Second nature.

Safety, Health and Environment Information

The significant unusual hazards / risks associated with this type of work are noted as:

CONSTRUCTION	
CI	CDM32 FIXING TO HOLLOW POTS
CII	
OPERATION AND MAINTENANCE	
OI	NONE
OII	
DISMANTLING/DEMOLITION	
DI	NONE
DII	

NOTE - TO BE READ IN CONJUNCTION WITH RISK REGISTER

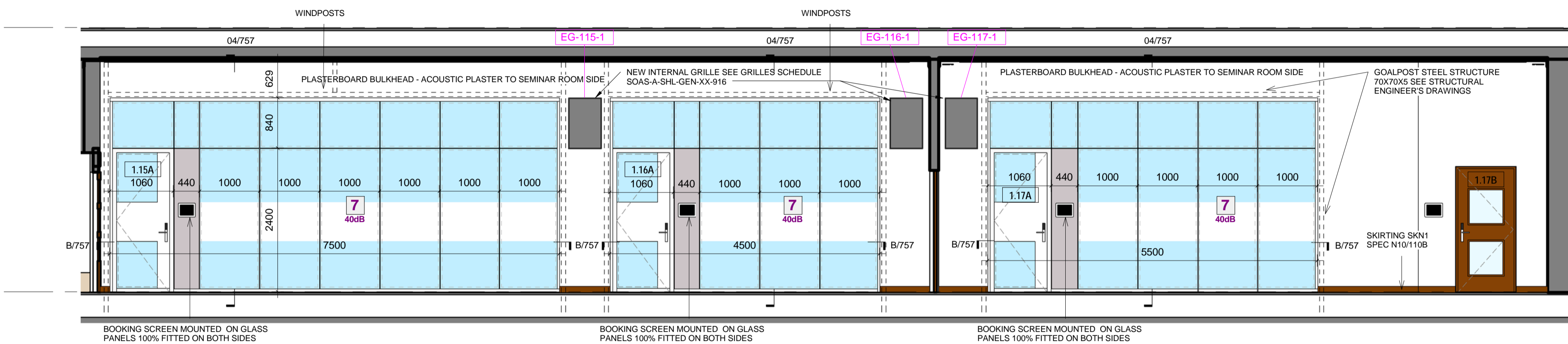
- LEGEND
- 1 K10125A GYP/WALL CLASSIC (BG type A206186) 60MIN FIRE RATED - 100MM OVERALL. REF DWG 701
 - 2 K10125B GYP/WALL CLASSIC (BG type A206003) 60MIN FIRE RATED - 100MM OVERALL. REF DWG 702
 - 3 K10145A SHAFTWALL (A306030b) 120MIN FIRE RATED - NOMINAL 107MM OVERALL. REF DWG 703
 - 4 K10165A GYPLINER UNIVERSAL (BG type B226008A) - NOMINAL 60MM OVERALL. REF DWG 704
 - 5 K10125C GYP/WALL CLASSIC (BG type A206142) 60MIN FIRE RATED - NOMINAL 122MM OVERALL. REF DWG 705
 - 6 L20545A ACOUSTIC OPERABLE WALL-SEE DRG SOAS-A-DET-GEN-ZZ-756
 - 7 K30130A DOUBLE GLAZED PARTITIONS & DOUBLE GLAZED FLUSH DOORS
 - 8 K30130C SINGLE GLAZED PARTITIONS WITH SLIDING DOORS
 - 9 K10155B GYPLINER IWL (BG type B226003D) 30MIN FIRE RATED - NOMINAL 95MM OVERALL
 - 10 K10155A GYPLINER IWL (BG type B226003A) 30MIN FIRE RATED - NOMINAL 95MM OVERALL
 - 13 K30130A SOLID PANEL
 - 14 F10355B 100MM CONCRETE BLOCKWORK TO LOWER GROUND TOILETS AND INFILL OF INTERNAL OPENINGS UP TO 2.9M
 - 15 F10356A 140MM CONCRETE BLOCKWORK FOR OPENINGS ABOVE 2.9M HIGH
 - 16 F10356B 75MM CONCRETE BLOCKWORK WHERE REQUIRED
 - 15 F10355C CONCRETE BLOCKWORK
 - 16 L20490 FULL HEIGHT GLAZED CURTAIN WALLING SCREEN
 - 17 K10125E GYP/WALL CLASSIC (BG type A206015) 60MIN FIRE RATED - NOMINAL 122MM OVERALL
 - 18 K10125D GYP/WALL CLASSIC (BG type A206079) 120MIN FIRE RATED - NOMINAL 122MM OVERALL

SK1-7 SKIRTING TO MATCH EXISTING FOR SKIRTING TYPES REFER TO DRAWING SOAS-A-DET-GEN-XX-741

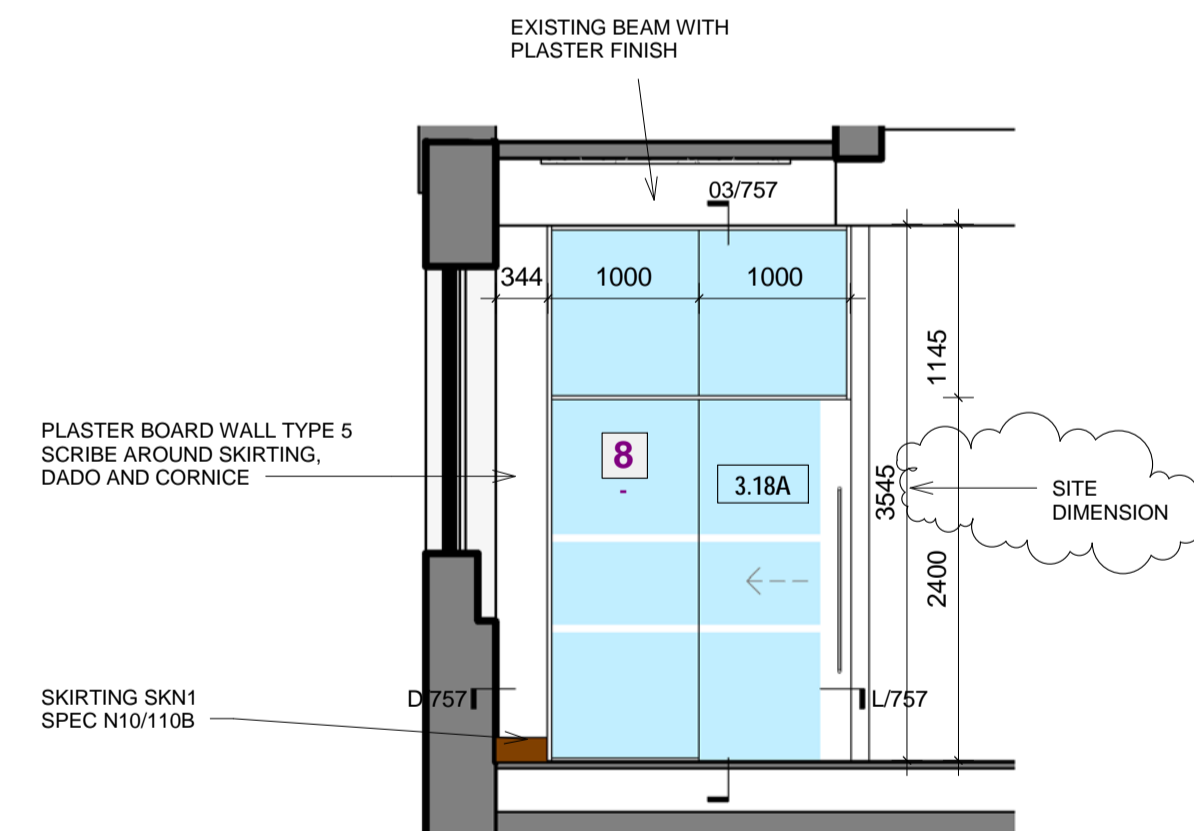
SKN-7 NEW SKIRTING PROFILE

SG-LG29-1 LOUVRE/GRILLES TAGS REFER 28731-SOAS-A-SHL-GEN-XX-918

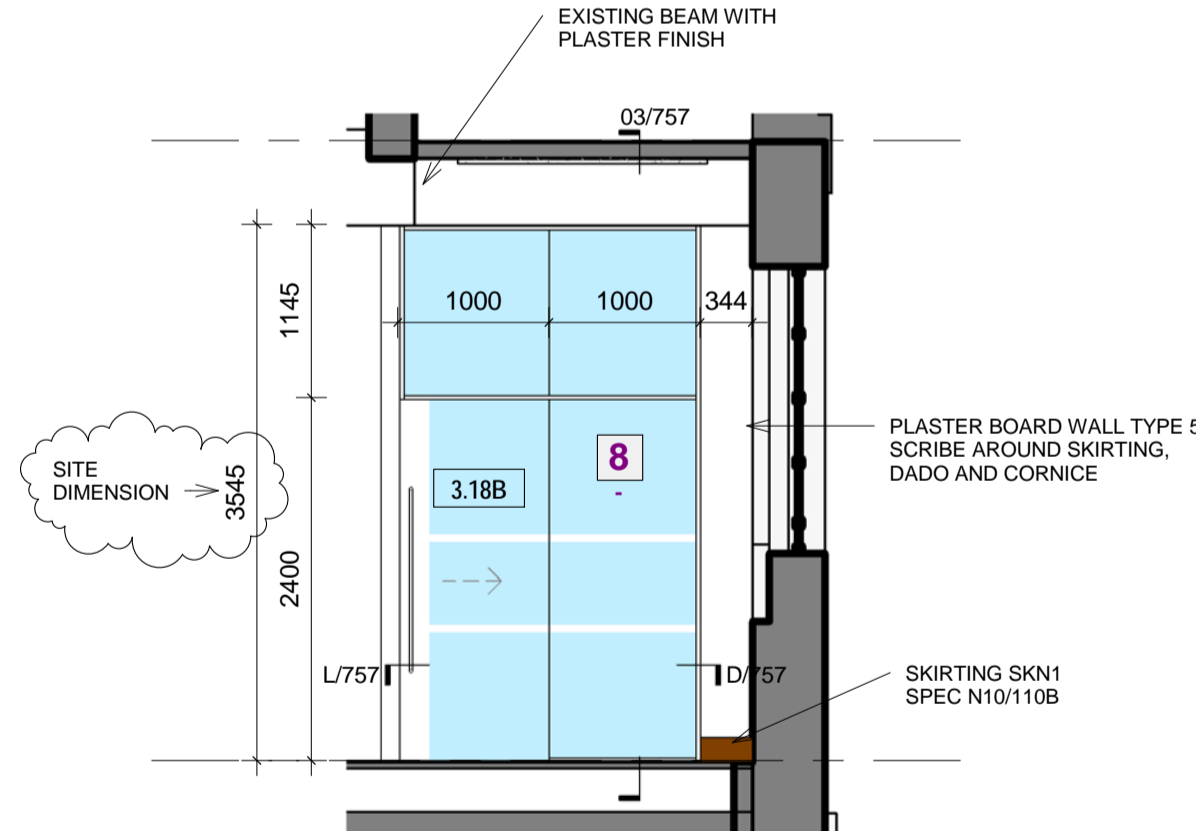
W-LG12-3 WINDOW TAGS REFER 28731-SOAS-A-SHL-GEN-XX-913/914



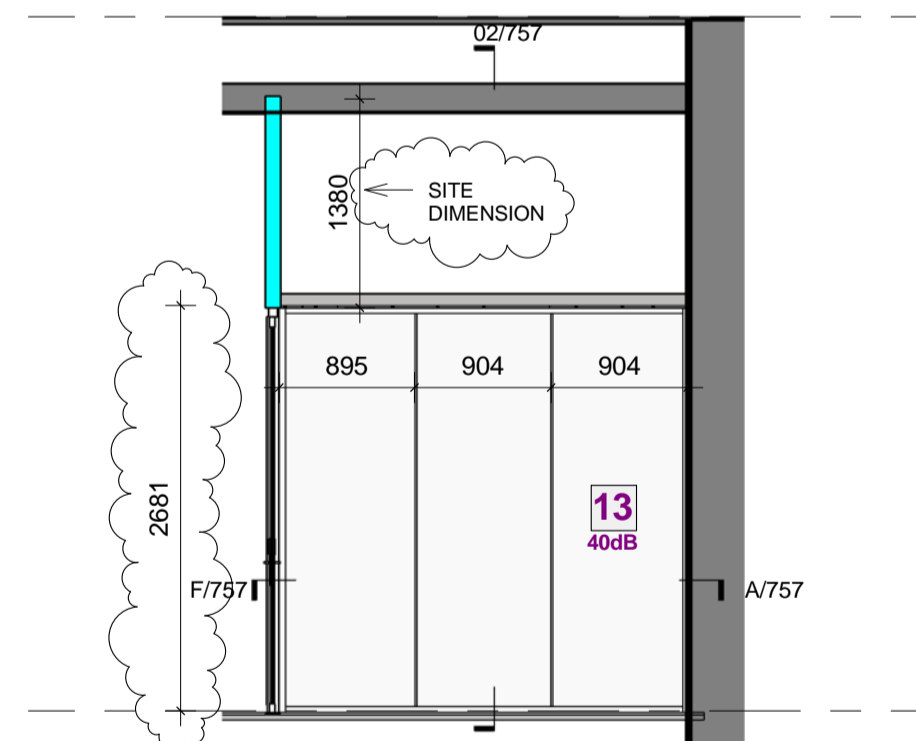
3 1.15, 1.16 & 1.17
1:50



9 3.18 A
1:50

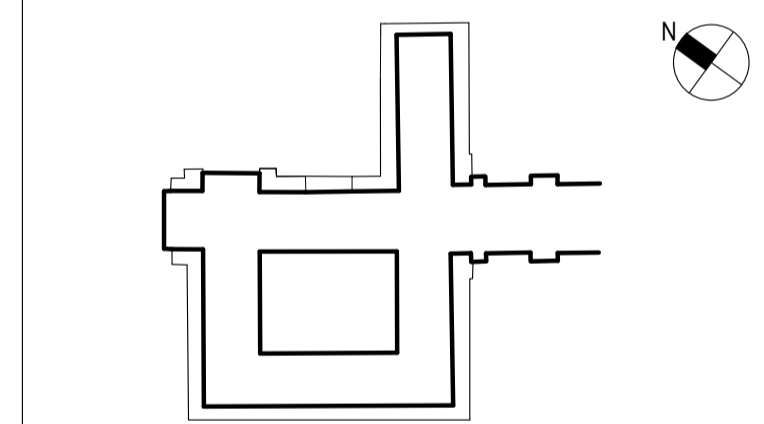


10 3.18 B
1:50



11 G.45 & G.46 AND IN PRINCIPLE FOR G.09 & LG.13
1:50

REV	DATE	DESCRIPTION	HL	LT/CF	DWN	CHK/APP
1	19.09.14	ISSUE FOR REVIEW				
2	03.10.14	REVISED SINGLE TENDER G.45, G.46, G.09 & LG.13 ELEVATED MANIFESTATION ADDED. BOOKING SCREENS ADDED.	HT			GMLT
3	06.11.14	LOUVRES REFERENCES ADDED. LEVELS CHANGED. WALL TYPE LEGEND SHORTENED WITH FIRE RATINGS ADDED.	HT			GM/MD
4	09.12.14	REVISIONS AS HIGHLIGHTED TO SUIT GRAHAM'S COMMENTS	HB			EF/MD



PROJECT STATUS
CONSTRUCTION



PROJECT TITLE
**SOAS INTO SENATE HOUSE
 MALET STREET
 LONDON, WC1E 7HU**

DRAWING TITLE
**PROPOSED
 SYSTEM PARTITIONS
 SHEET 2**

PROJECT NO.	28731	DRAWN BY	JB	DATE	14/08/13
CHK BY	CF	DATE	14/08/13		
APPD BY	-	DATE	14/08/13		

PROJECT CODE | DISC | VIEW TYPE | VIEW CAT | LEVEL | DWG. NO.
SOAS - A - ELE - GEN - ZZ - 752

SHEET NO.	1 of 1	SCALE	As indicated	ORIG. SHEET SIZE	REV.	C 4
-----------	--------	-------	--------------	------------------	------	-----

INFORMATION HANDLING CLASSIFICATION
UNRESTRICTED