

**PLY PRESSURES**  
 1 - FFL TO 1950mm AFFL  
 2 - FFL TO 2450mm AFFL  
 PATTERNING HEIGHT / SIZE TO BE CONFIRMED ON SITE

EXISTING AND RELOCATED DOOR REFER TO SCHEDULE:  
 28731-SOAS-A-SHL-GEN-XX-911

PROPOSED NEW DOOR REFER TO SCHEDULE:  
 28731-SOAS-A-SHL-GEN-XX-912

FOR DETAIL REFERENCES REFER TO DRAWING  
 28731-SOAS-A-DET-GEN-XX-757

**NOTE:**  
 MINIMUM EFFECTIVE CLEAR WIDTH THROUGH SINGLE LEAF DOOR OR ONE LEAF OF A DOUBLE LEAF DOOR SHOULD BE 925MM.

GOAL POST STRUCTURE FINAL DETAILS - AS DETAIL 04/757 - TO BE CONFIRMED IN SE PACKAGE. SUB-CONTRACTOR FOR PACKAGE CONCEALING GOAL POST SOLUTION TO OBTAIN PREFERRED PARTITION SYSTEM SUPPLIERS REVIEW OF ALTERNATIVE SOLUTIONS FOR CONCEALED SUPPORT TO GLAZED PARTITION SYSTEM FOR REVIEW AS ALTERNATIVE TO HR POSTS.

© COPYRIGHT Mace Group  
 NOT TO BE REPRODUCED WITHOUT WRITTEN PERMISSION.  
 BECAUSE OF POSSIBLE SCALING ERRORS IN ELECTRONIC AND HARD COPY REPRODUCTION DO NOT SCALE FOR CONSTRUCTION PURPOSES.  
 ALL DIMENSIONS TO BE CHECKED & VERIFIED ON SITE PRIOR TO CONSTRUCTION.

**Safety first. Second nature.**

Safety, Health and Environment Information

The significant unusual hazards / risks associated with this type of work are noted as:

CONSTRUCTION	
CI	CDM32 FIXING TO HOLLOW POTS
CII	
OPERATION AND MAINTENANCE	
OI	NONE
OII	
DISMANTLING/DEMOLITION	
DI	NONE
DII	

NOTE - TO BE READ IN CONJUNCTION WITH RISK REGISTER

LEGEND

- 1 K10125A GYPWALL CLASSIC (BG type A206186) 60MIN FIRE RATED - 100MM OVERALL. REF DWG 701
- 2 K10125B GYPWALL CLASSIC (BG type A206003) 60MIN FIRE RATED - 100MM OVERALL. REF DWG 702
- 3 K10145A SHAFTWALL (A306030b) 120MIN FIRE RATED - NOMINAL 107MM OVERALL. REF DWG 703
- 4 K10165A GYPLINER UNIVERSAL (BG type B226008A) - NOMINAL 60MM OVERALL. REF DWG 704
- 5 K10125C GYPWALL CLASSIC (BG type A206142) 60MIN FIRE RATED - NOMINAL 122MM OVERALL. REF DWG 705
- 6 L20645A ACOUSTIC OPERABLE WALL-SEE DRG SOAS-A-DET-GEN-ZZ-756
- 7 K30130A DOUBLE GLAZED PARTITIONS & DOUBLE GLAZED FLUSH DOORS 55MM OVERALL
- 8 K30130C SINGLE GLAZED PARTITIONS WITH SLIDING DOORS
- 9 K10155B GYPLINER RWL (BG type B226003D) 30MIN FIRE RATED - NOMINAL 95MM OVERALL
- 10 K10155A GYPLINER RWL (BG type B226003A) 30MIN FIRE RATED - NOMINAL 95MM OVERALL
- 11 K30130A SOLID PANEL
- 12 F10355B 100MM CONCRETE BLOCKWORK TO LOWER GROUND TOILETS AND INFILL OF INTERNAL OPENINGS UP TO 2.3M
- 13 F10355A 140MM CONCRETE BLOCKWORK FOR OPENINGS ABOVE 2.9M HIGH
- 14 F10355B 75MM CONCRETE BLOCKWORK WHERE REQUIRED
- 15 F10355C CONCRETE BLOCKWORK
- 16 L20490 FULL HEIGHT GLAZED CURTAIN WALLING SCREEN
- 17 K10125E GYPWALL CLASSIC (BG type A206015) 60MIN FIRE RATED - NOMINAL 122MM OVERALL
- 18 K10125D GYPWALL CLASSIC (BG type A206079) 120MIN FIRE RATED - NOMINAL 122MM OVERALL

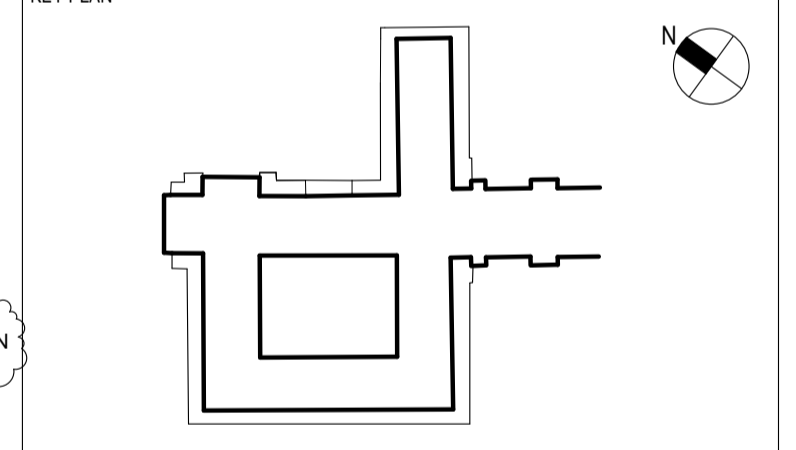
SKE-7 SKIRTING TO MATCH EXISTING FOR SKIRTING TYPES REFER TO DRAWING SOAS-A-DET-GEN-XX-744

SKN-7 NEW SKIRTING PROFILE

SG-LG29-1 LOUVRE/GRILLES TAGS REFER 28731-SOAS-A-SHL-GEN-XX-918

W-LG12-3 WINDOW TAGS REFER 28731-SOAS-A-SHL-GEN-XX-919/914

REV	DATE	DESCRIPTION	HL	LT/CF	DWN	CHK/APP
4	09.12.14	REVISIONS AS HIGHLIGHTED TO SUIT GRAHAM'S COMMENTS	HB	EF/MD		
3	06.11.14	LOUVRES REFERENCES ADDED. LEVELS CHANGED. WALL TYPE LEGEND SHORTENED WITH FIRE RATINGS ADDED	HT	GM/MD		
2	03.10.14	REVISED SINCE TENDER LG.03, LG.34B OMITTED. G.30, G.13 MOVED TO SHEET 755. ADDED LG.67, LG.68 (CLIENT CHANGE). MANIFESTATION ADDED. DOOR ELEVATIONS ADDED	HT	GM/LT		
1	19.09.14	ISSUE FOR REVIEW	HL	LT/CF		



PROJECT STATUS: CONSTRUCTION

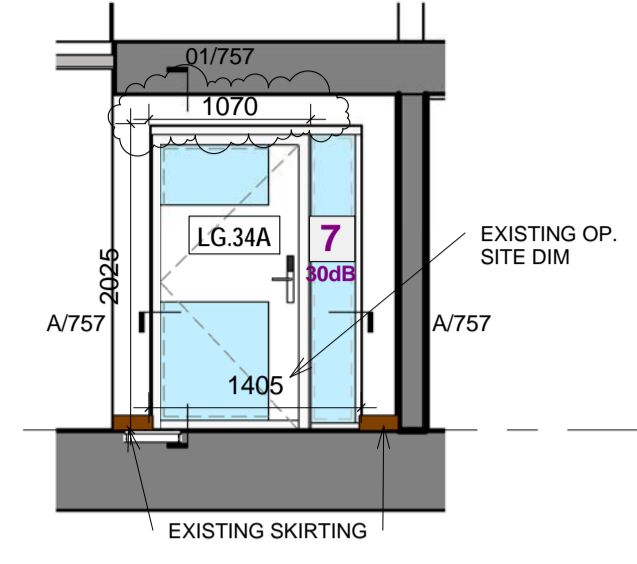


PROJECT TITLE  
**SOAS INTO SENATE HOUSE  
 MALET STREET  
 LONDON, WC1E 7HU**

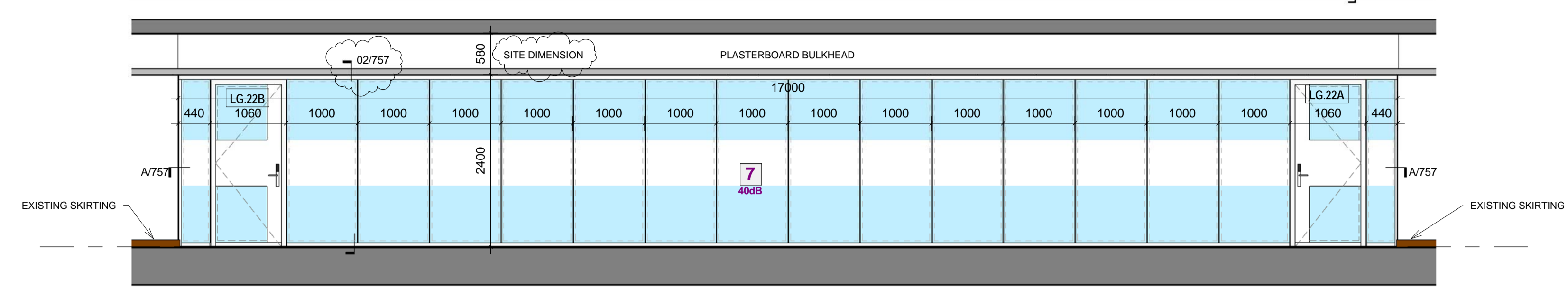
DRAWING TITLE  
**PROPOSED  
 SYSTEM PARTITIONS  
 SHEET 1**

PROJECT NO. <b>28731</b>	DRAWN BY <b>JB</b>	DATE <b>13/08/13</b>
	CHK BY <b>CF</b>	DATE <b>13/08/13</b>
	APPD BY <b>-</b>	DATE <b>13/08/13</b>
PROJECT CODE <b>SOAS - A - ELE - GEN - ZZ - 751</b>	VIEW TYPE <b>-</b>	VIEW CAT. <b>-</b>
	LEVEL <b>-</b>	DWG. NO. <b>-</b>
SHEET NO. <b>1 of 1</b>	SCALE <b>As indicated</b>	ORIG. SHEET SIZE <b>A1</b>
	REV. <b>C</b>	<b>4</b>

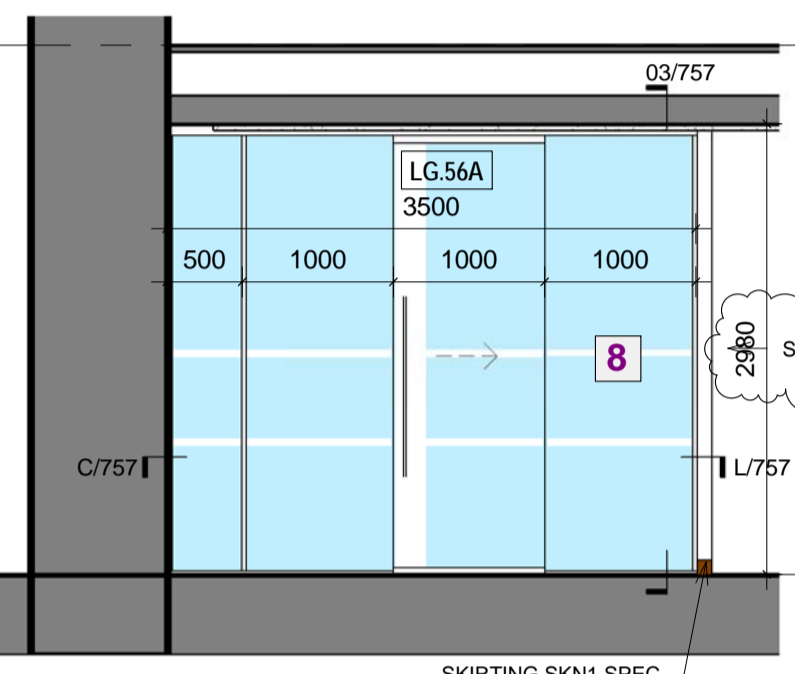
UNRESTRICTED



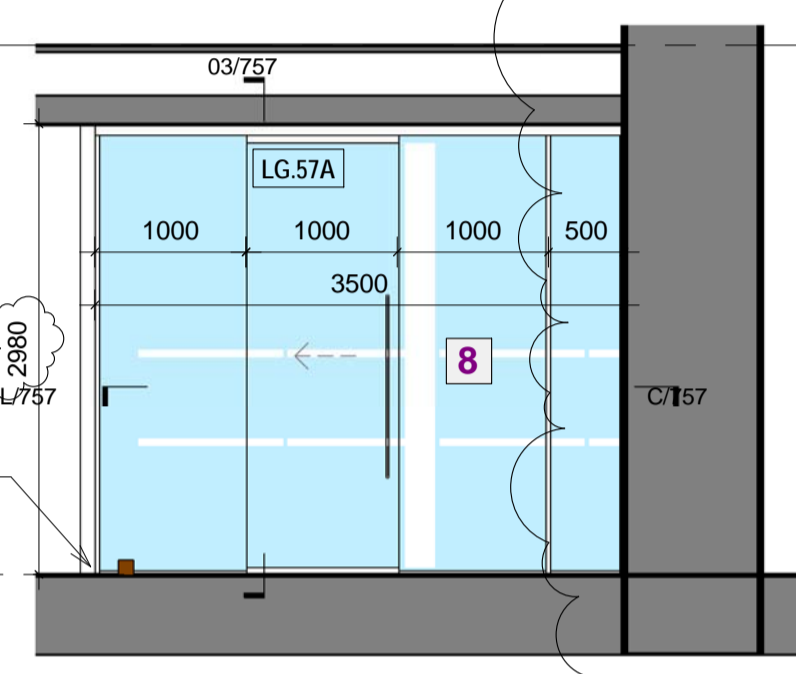
1 LG.34A  
1:50



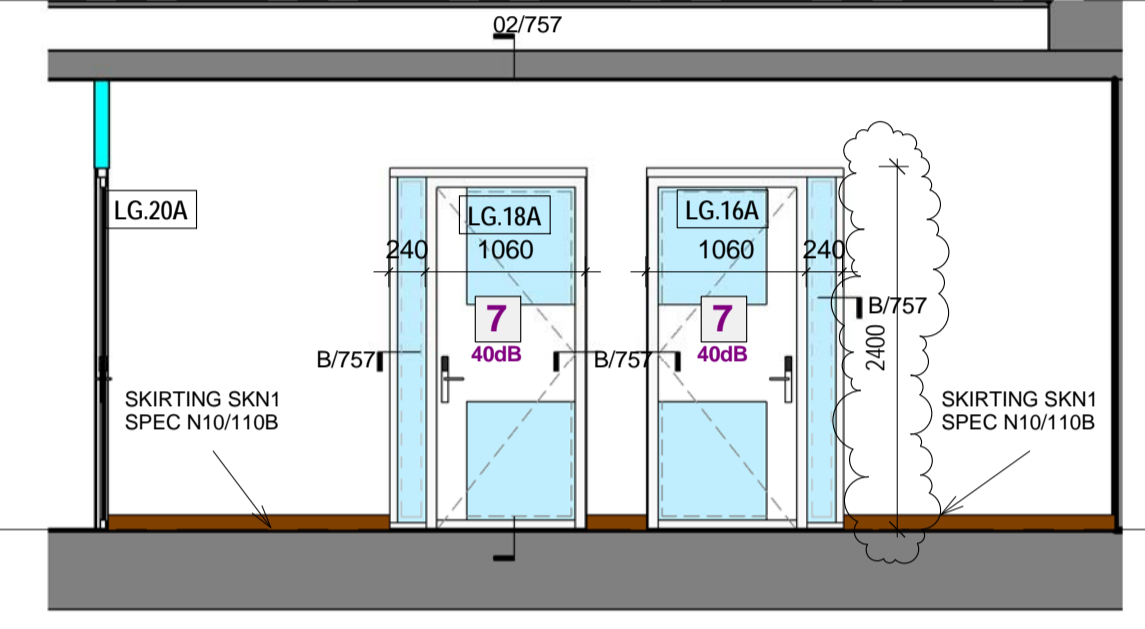
3 LG.22  
1:50



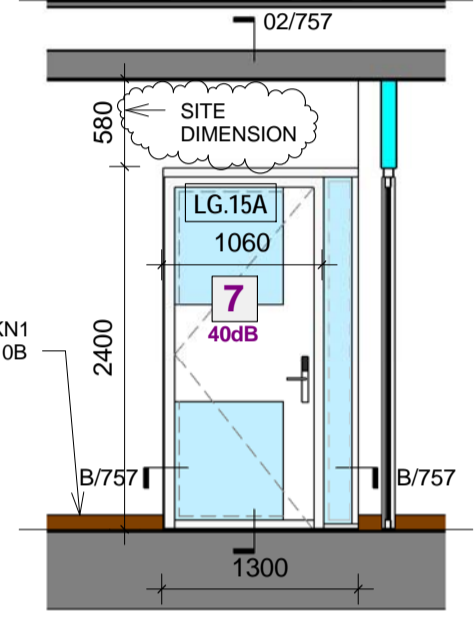
4 LG.56  
1:50



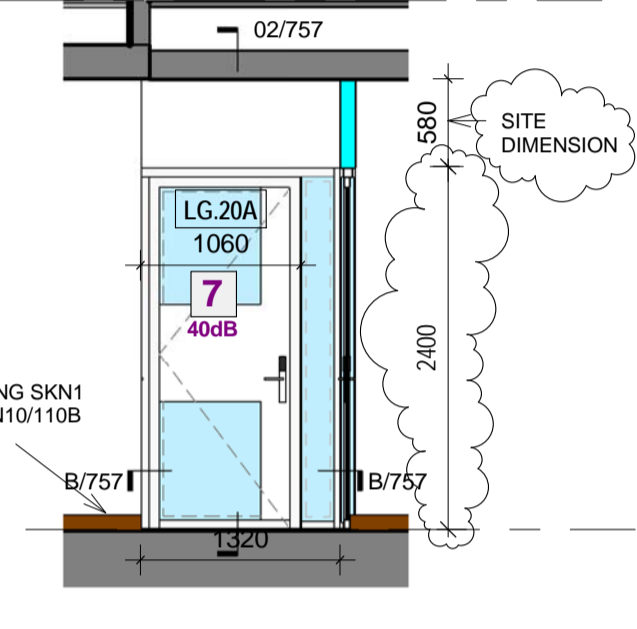
5 LG.57  
1:50



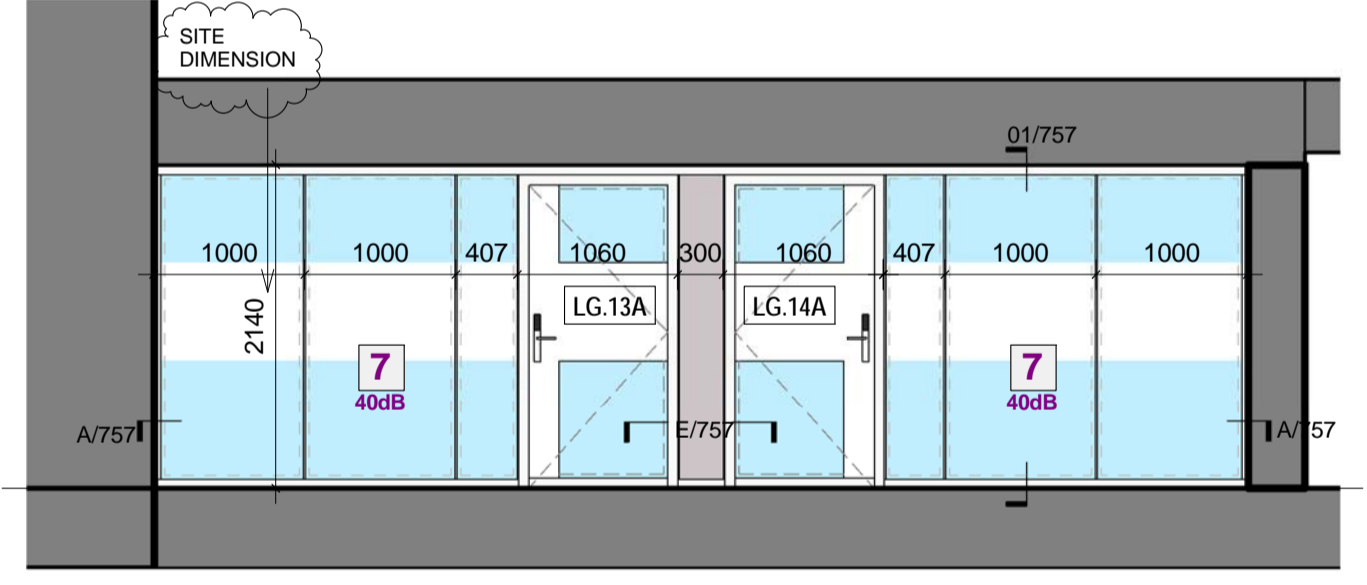
6 LG.16 & 18  
1:50



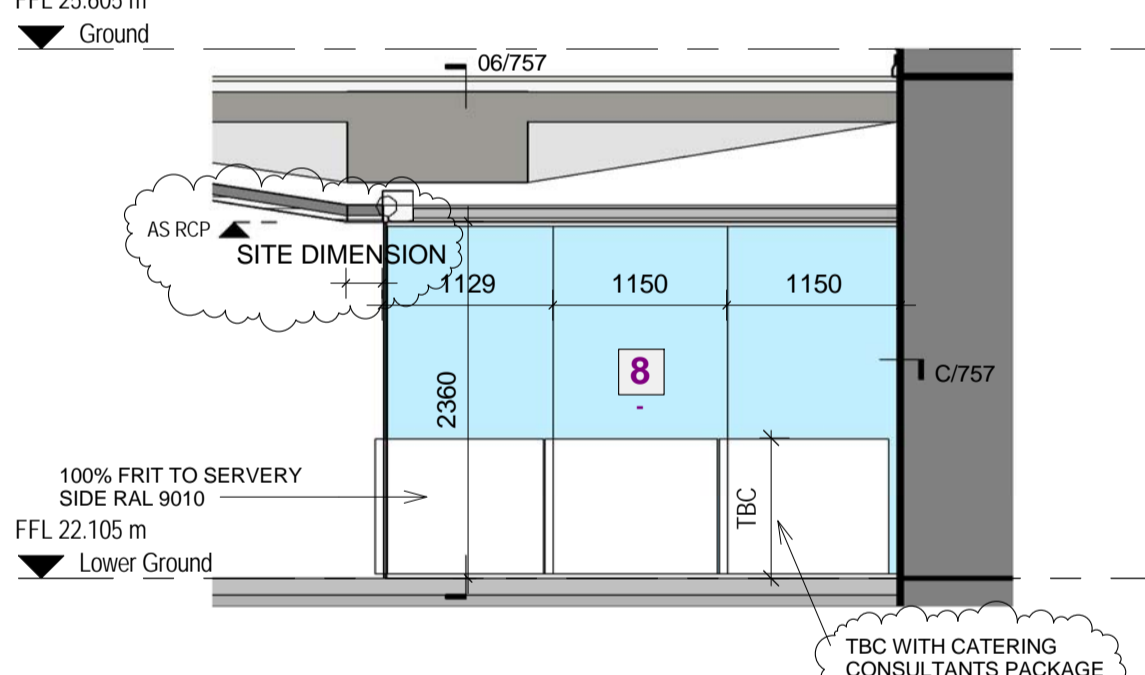
7 LG.15  
1:50



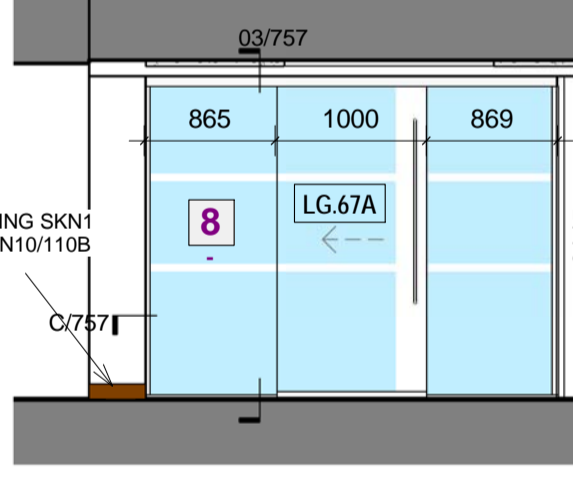
8 LG.20  
1:50



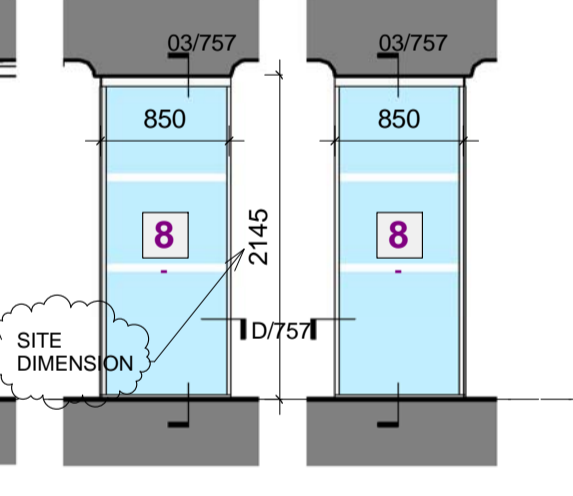
10 LG.13 & 14  
1:50



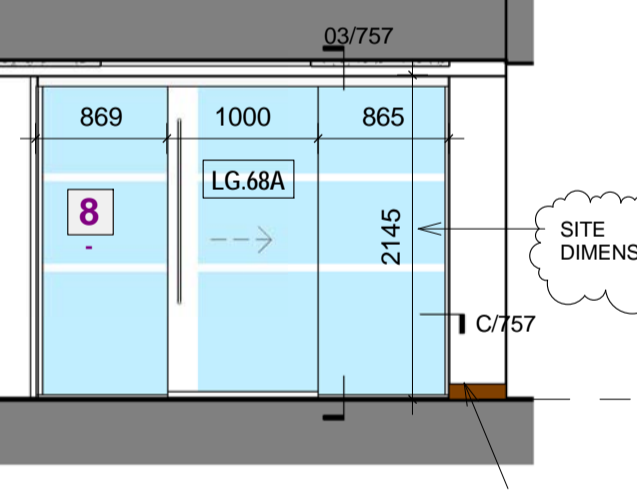
11 LG.30  
1:50



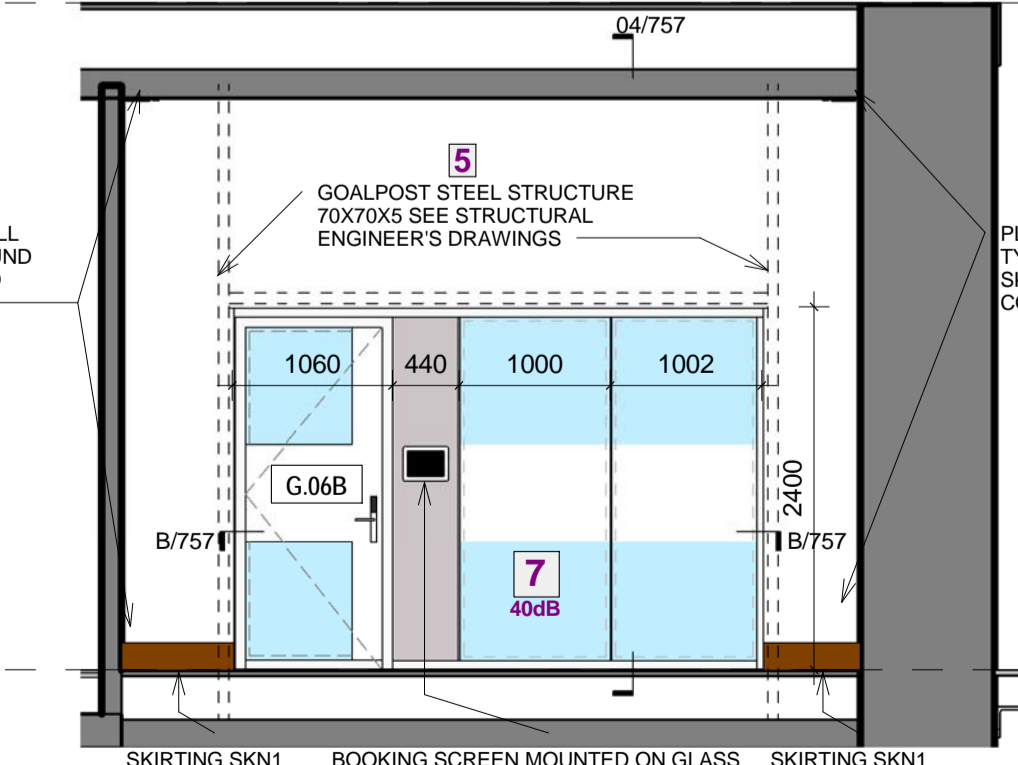
14 LG.67  
1:50



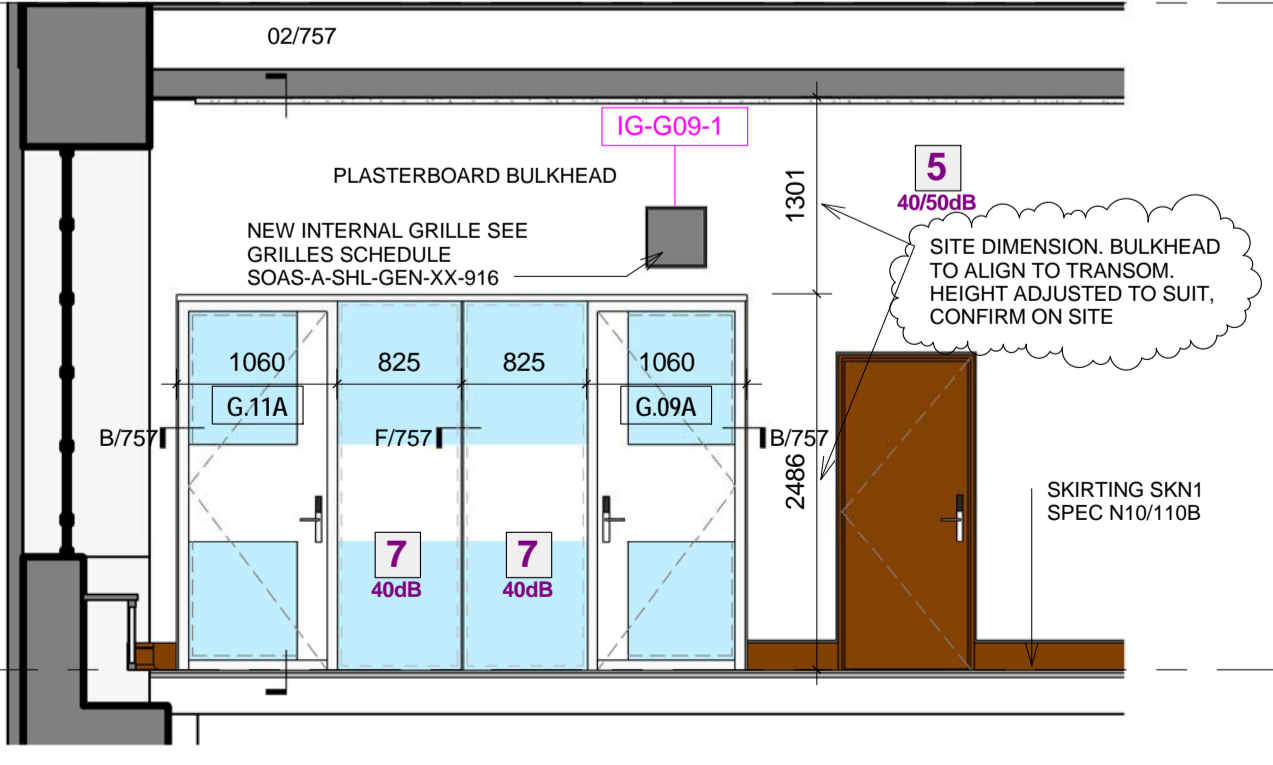
15 LG.67 & LG.68  
1:50



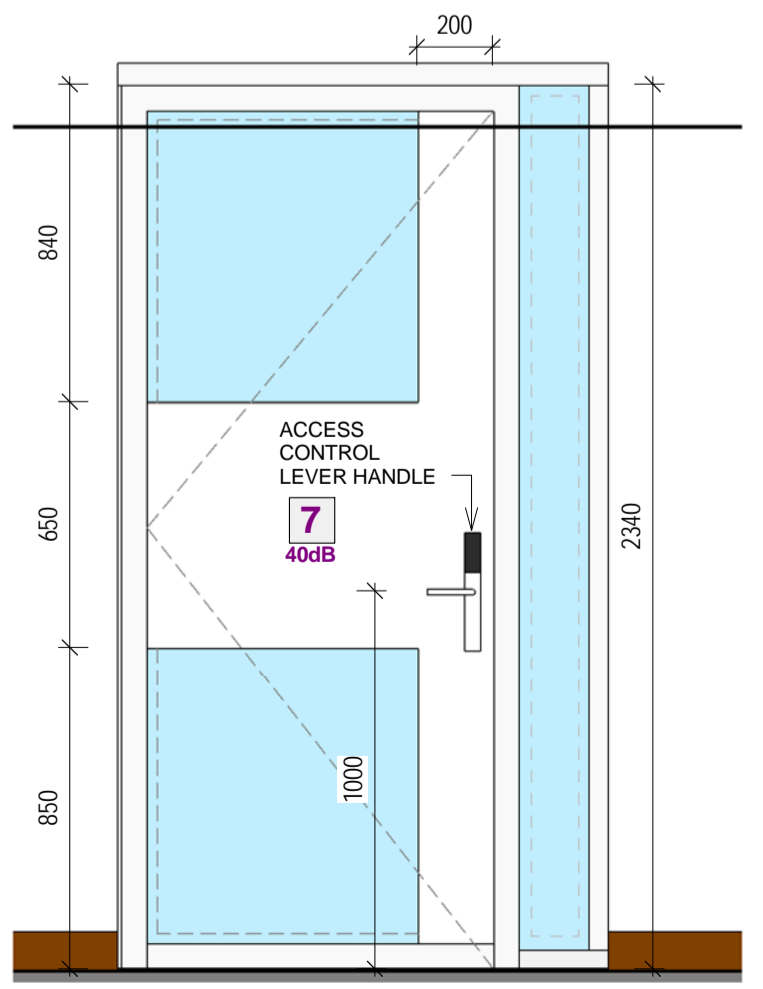
16 LG.68  
1:50



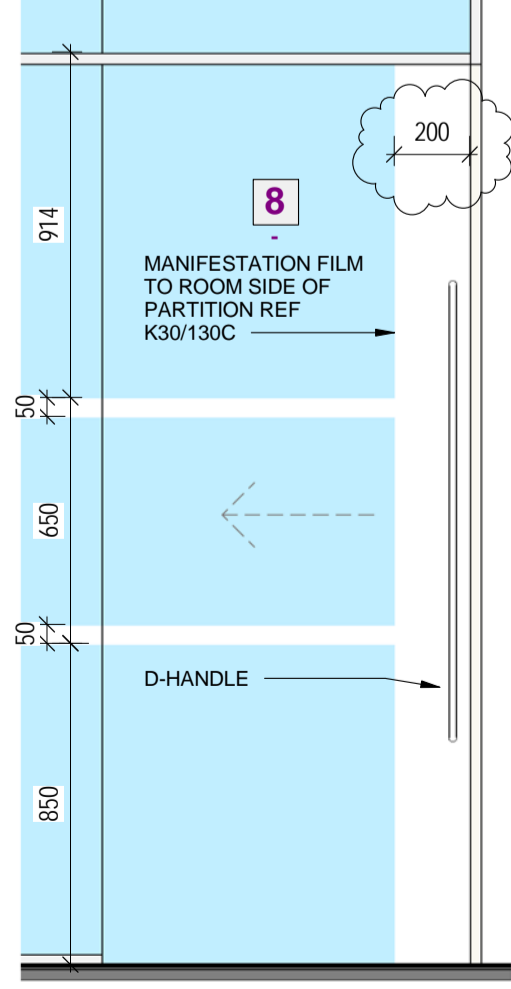
12 G.06  
1:50



13 G.09 & G.11  
1:50



17 TYPE 7 DOOR SETTING OUT ELEVATION  
1:20



18 TYPE 8 DOOR SETTING OUT ELEVATION  
1:20