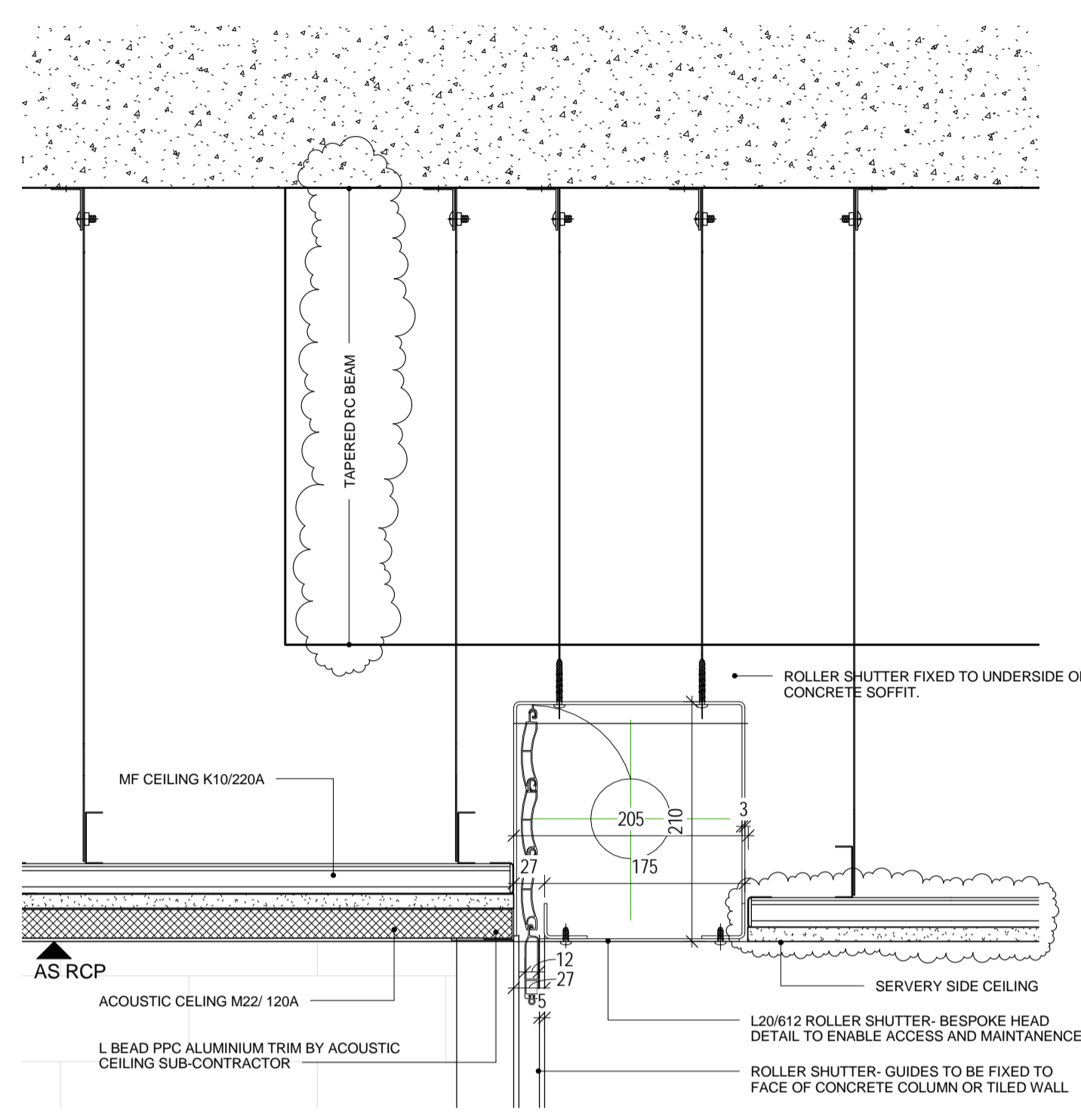


Safety, Health and Environment Information

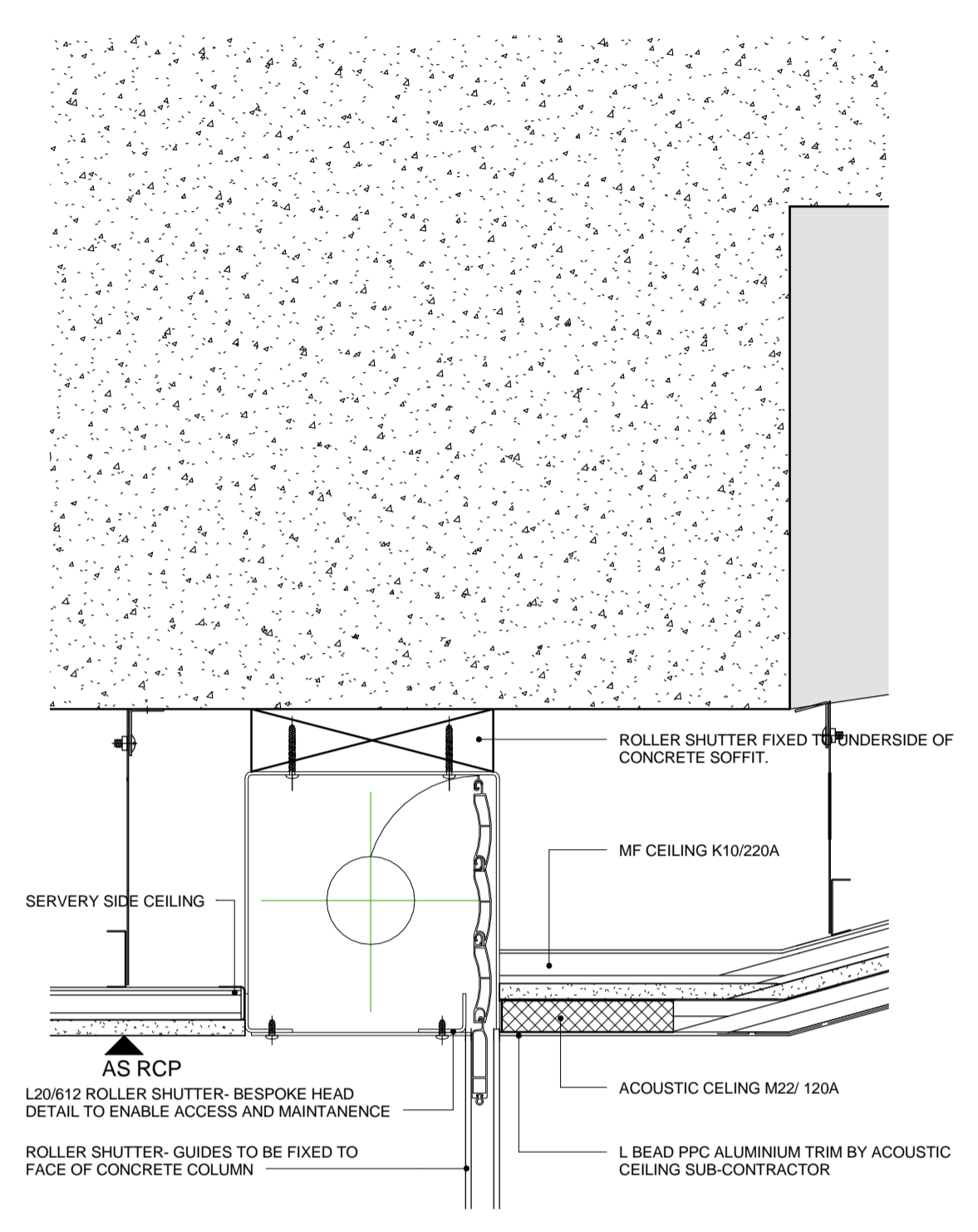
The significant unusual hazards / risks associated with this type of work are noted as:

CONSTRUCTION	
CI	
CII	
OPERATION AND MAINTENANCE	
OI	
OII	
DISMANTLING/DEMOLITION	
DI	
DII	

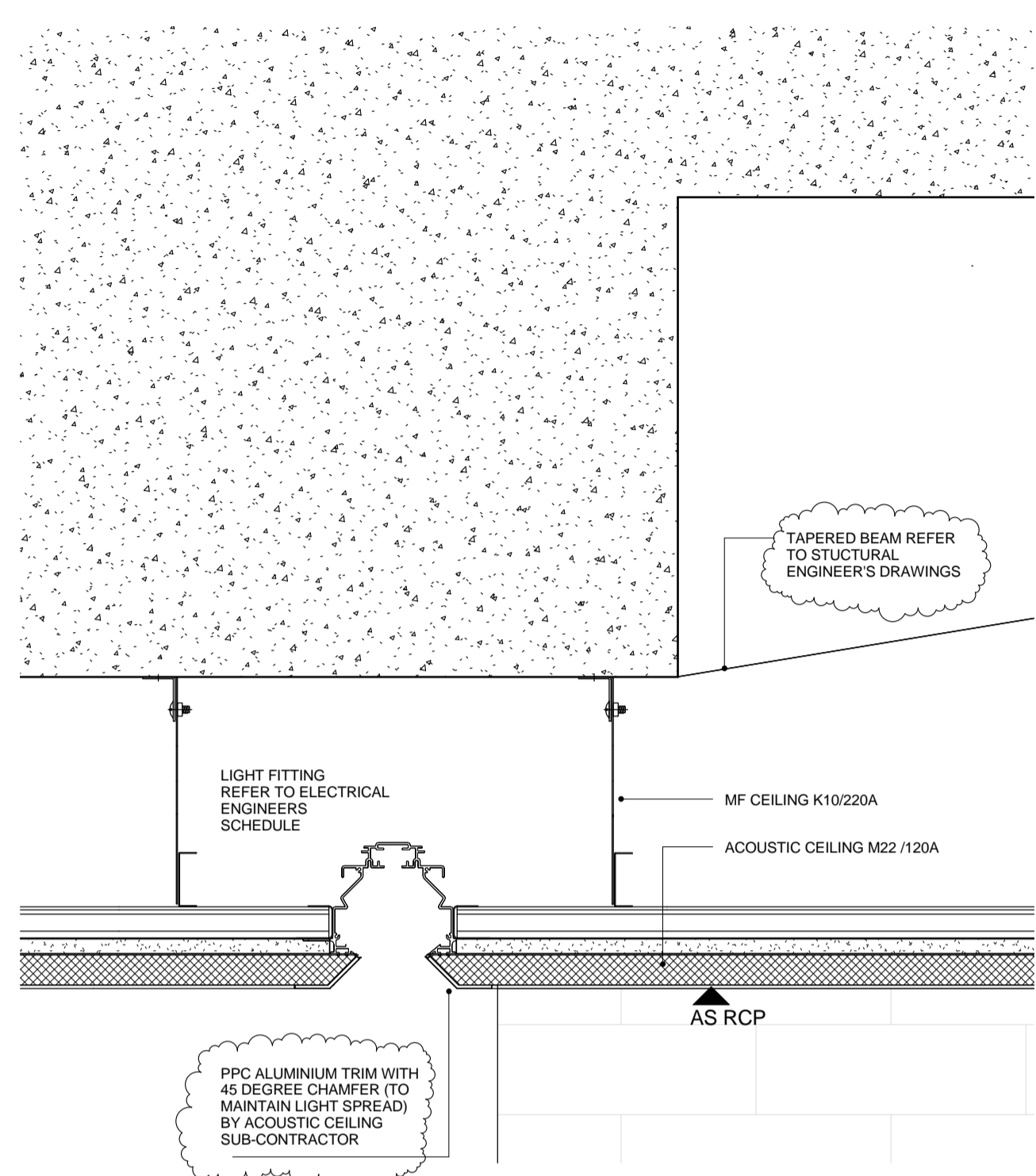
NOTE - TO BE READ IN CONJUNCTION WITH RISK REGISTER



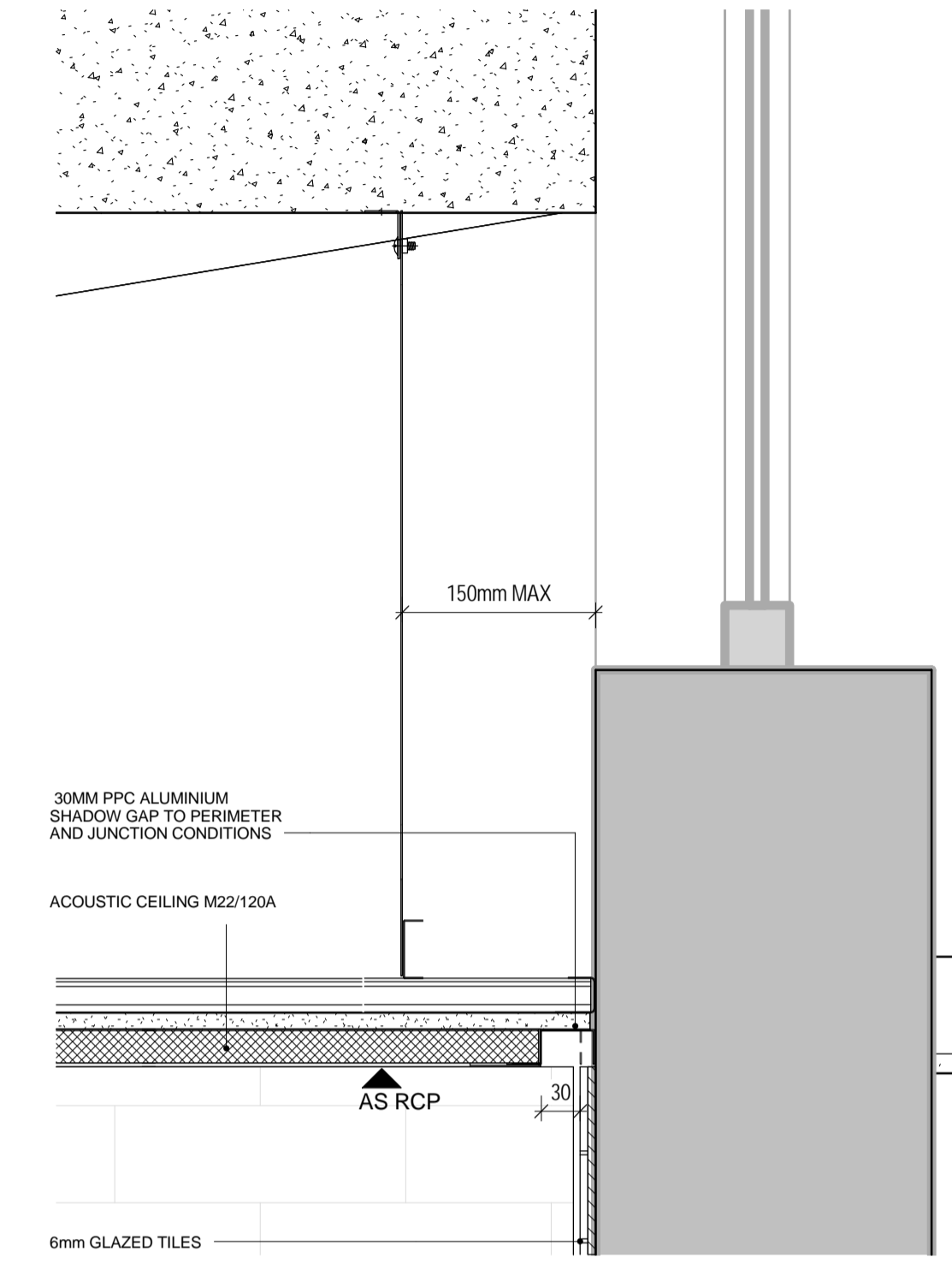
1 SERVERY SHUTTER
1:5



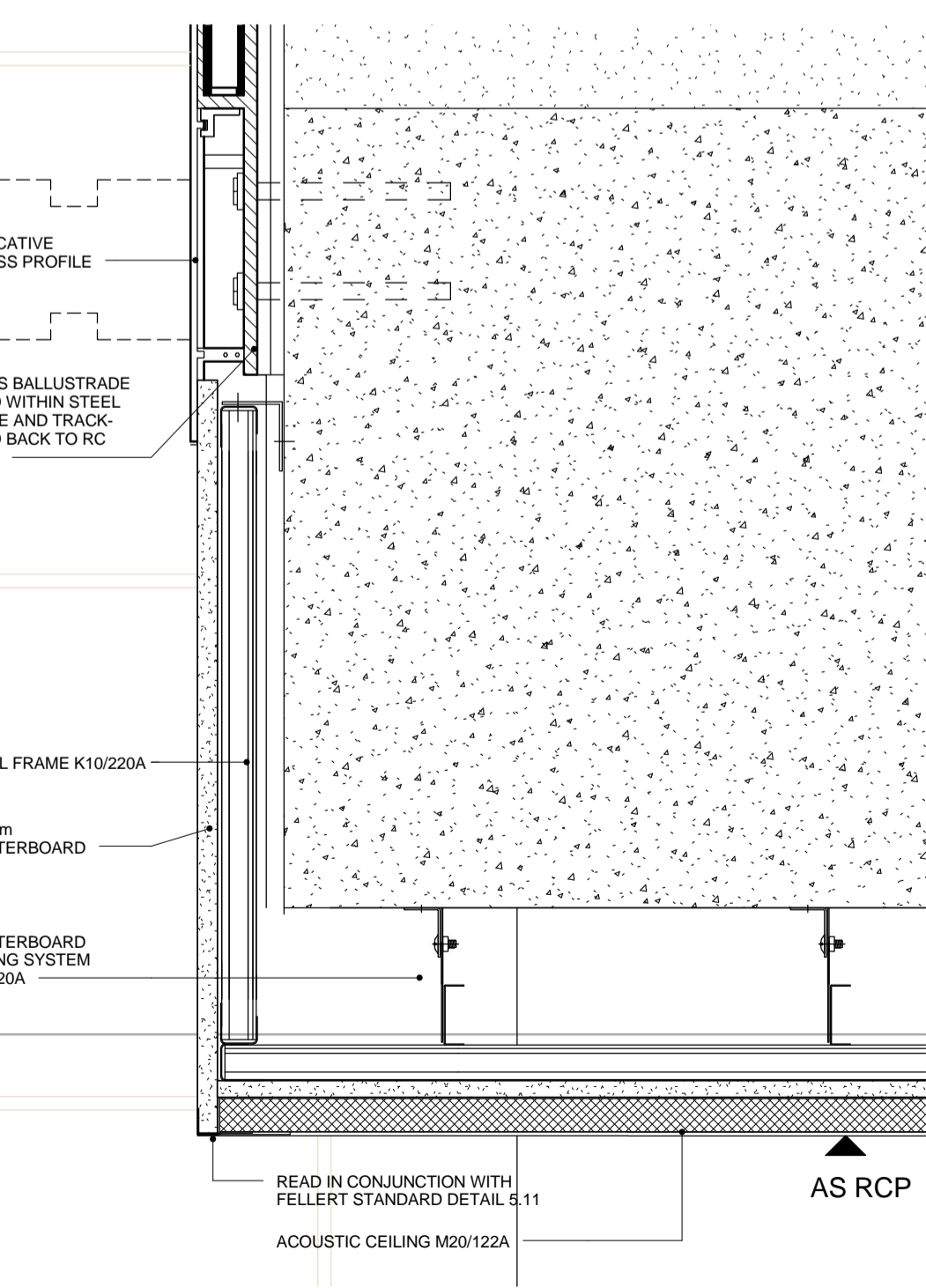
9 SHUTTER HEAD
1:5



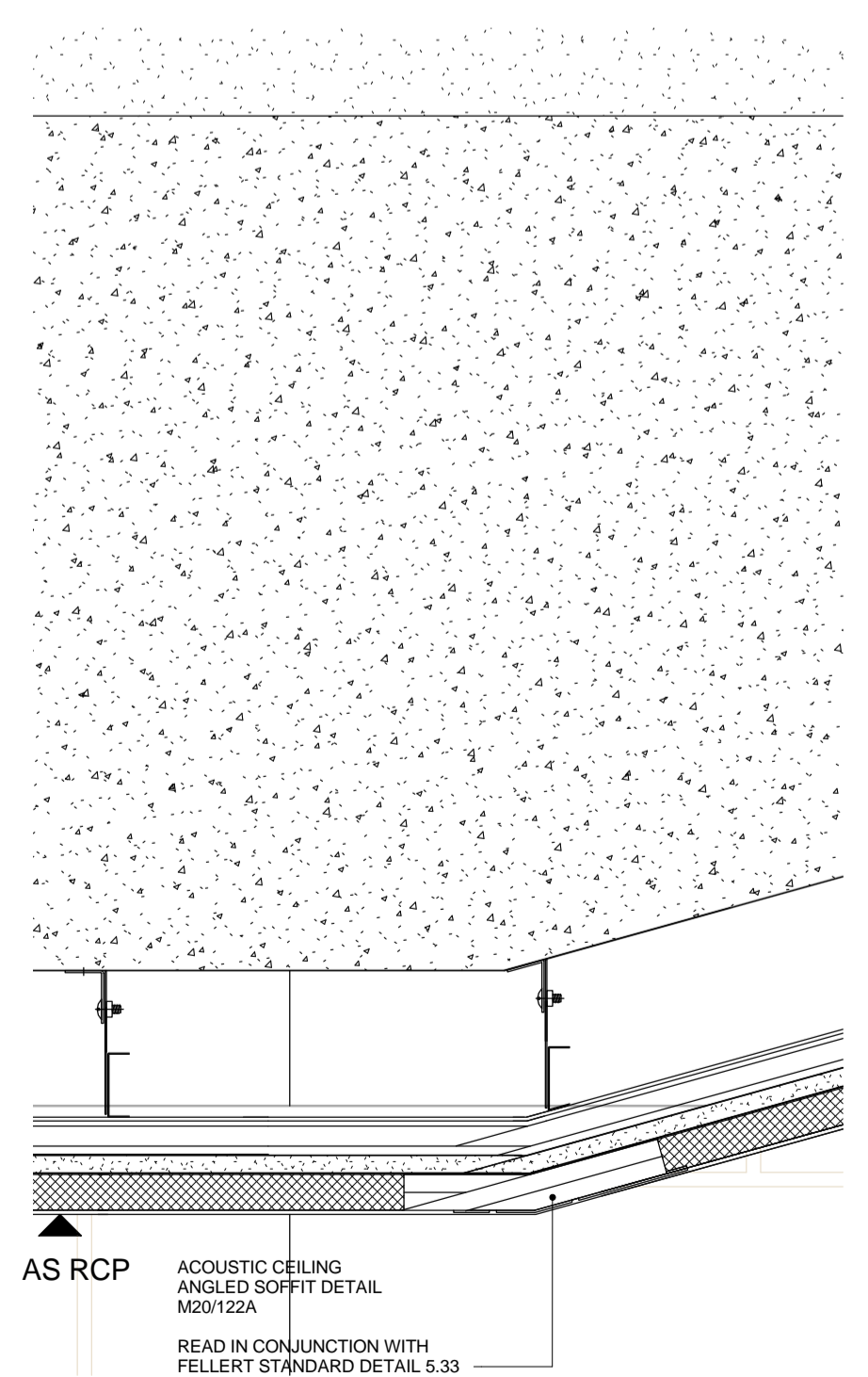
6 LIGHT FIXTURE
1:5



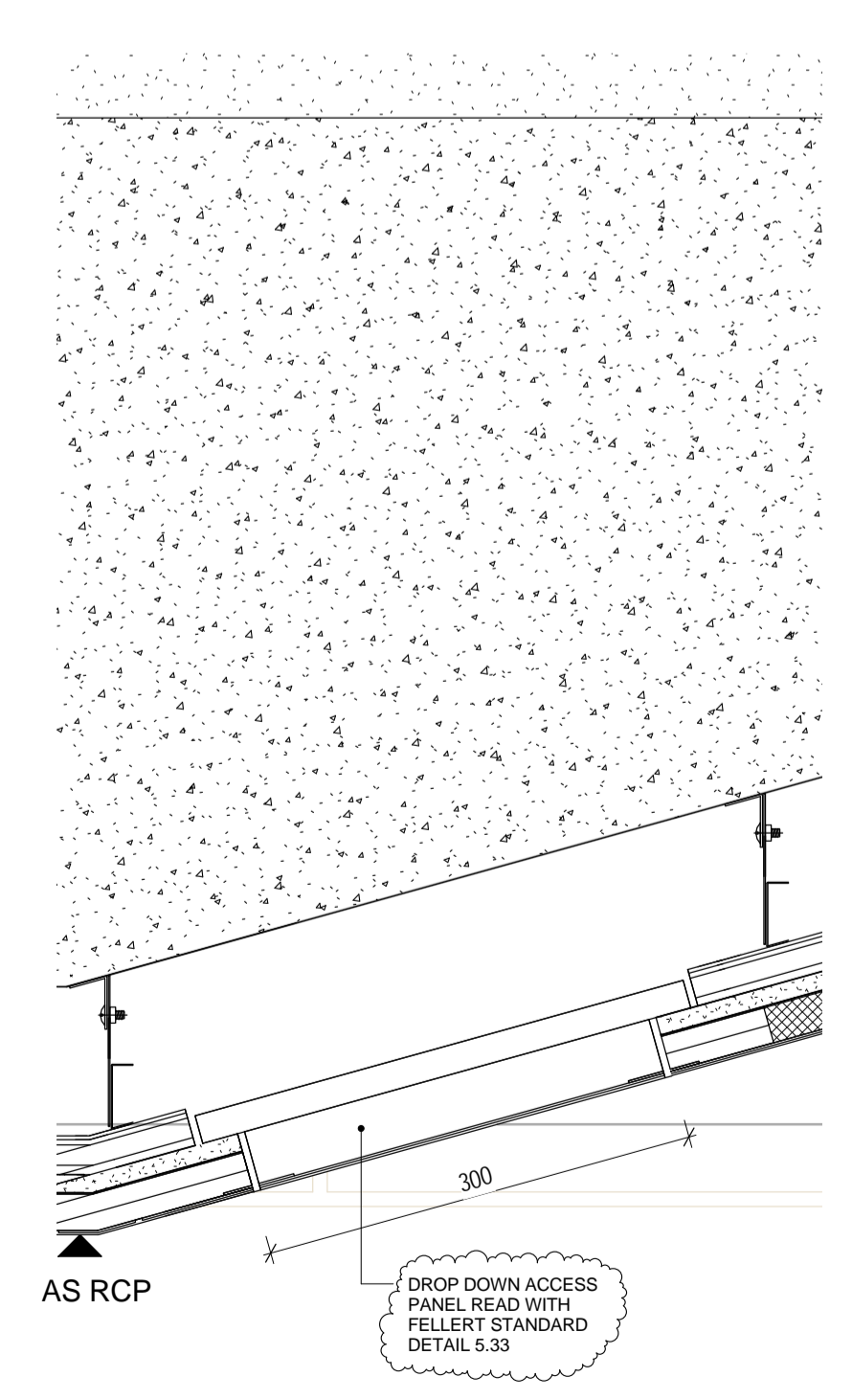
2 30mm SHADOW GAP ABUTMENT
1:5



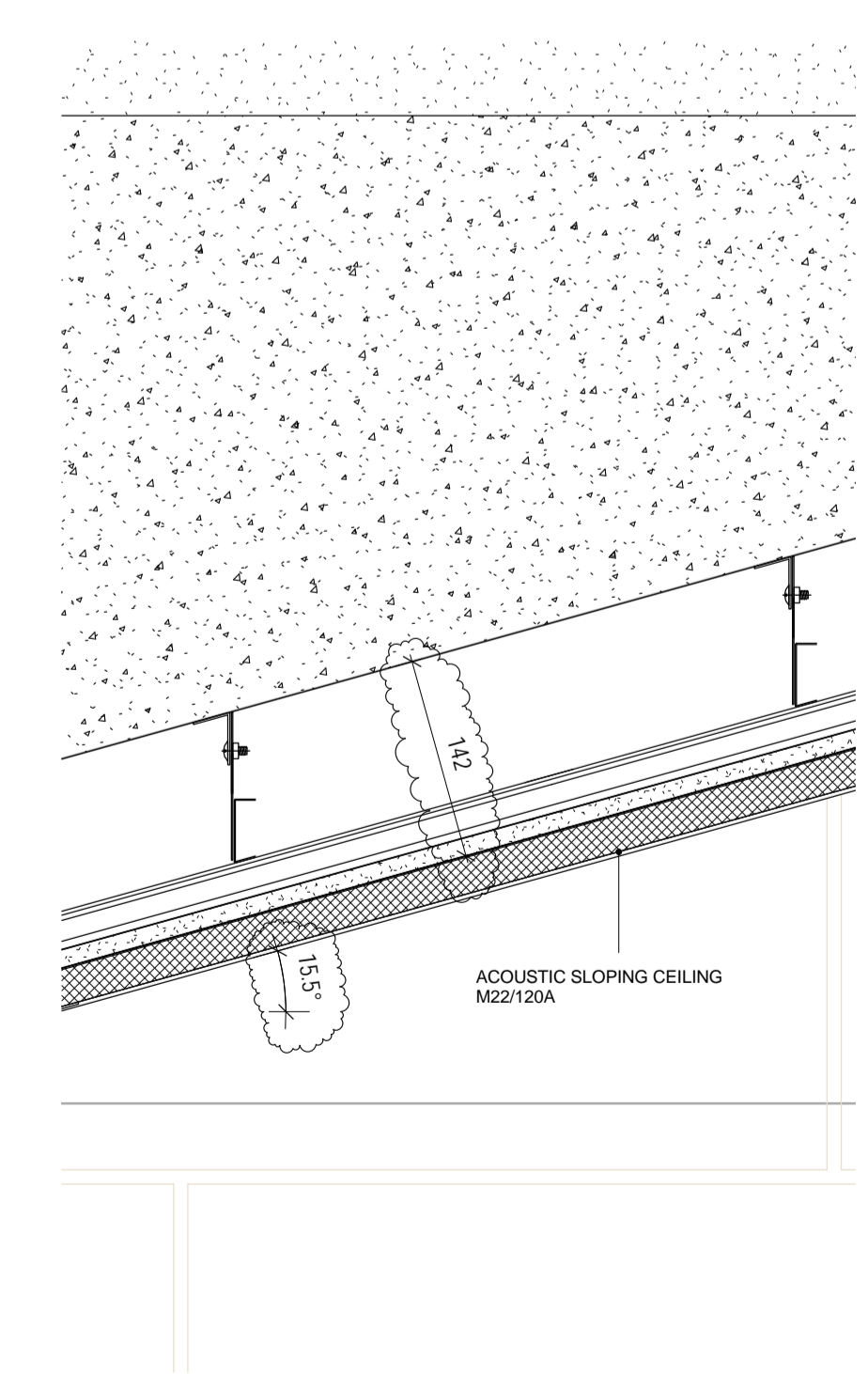
3 APRON DETAIL
1:5



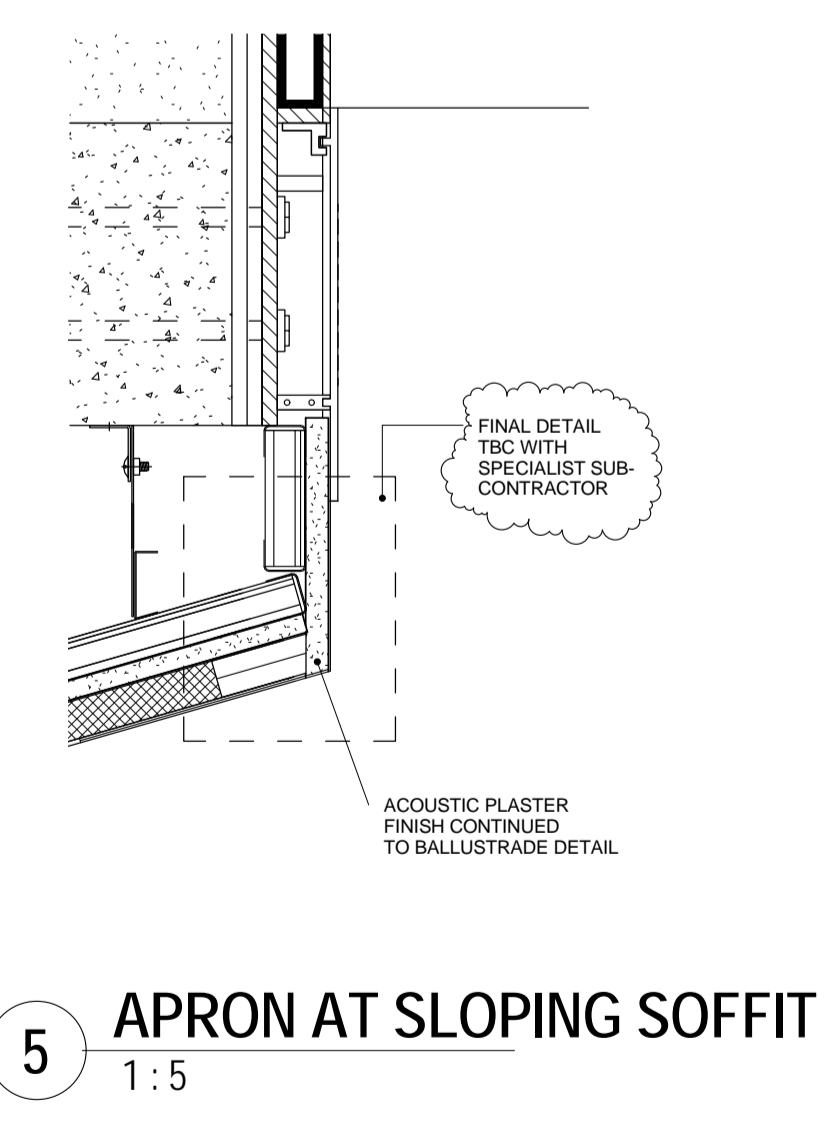
4 ACOUSTIC CEILING ANGLE DETAIL
1:5



7 DROP DOWN ACCESS PANEL
1:5



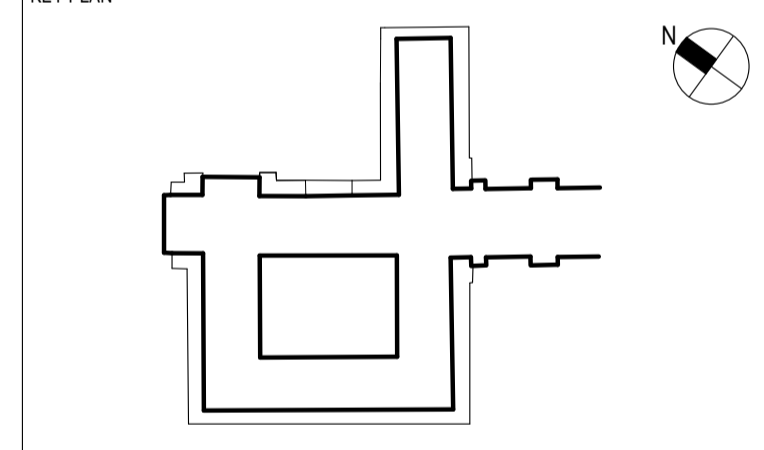
8 SLOPING SOFFIT DETAIL
1:5



5 APRON AT SLOPING SOFFIT
1:5

REV	DATE	DESCRIPTION	DWN	CHK/APP
2	21.11.14	CONSTRUCTION ISSUE. UPDATES TO REFLECT GRAHAM'S COMMENTS PLUS DETAIL 9 ADDED & DETAIL 1 AMENDED	HB	EF/MD
1	15.10.14	CONSTRUCTION ISSUE	HT	EF/LT

REV	DATE	DESCRIPTION	DWN	CHK/APP
1	15.10.14	CONSTRUCTION ISSUE	HT	EF/LT



PROJECT STATUS: CONSTRUCTION



PROJECT TITLE: SOAS INTO SENATE HOUSE
 MALET STREET
 LONDON, WC1E 7HU

DRAWING TITLE: CEILING DETAILS
 SHEET 4

PROJECT NO.	28731	DRAWN BY	BP	DATE	15.10.14
		CHK BY	EF	DATE	15.10.14
		APPD BY	LT	DATE	15.10.14
PROJECT CODE	SOAS - A - DET - GEN - XX - 766	VIEW TYPE		VIEW CAT.	
SHEET NO.	1 of 2	SCALE	1:5	ORIG. SHEET SIZE	@ A1
				REV.	C 2

INFORMATION HANDLING CLASSIFICATION