

Safety first. Second nature.

Safety, Health and Environment Information

The significant unusual hazards / risks associated with this type of work are noted as:

CONSTRUCTION	
CI	NONE
CII	
OPERATION AND MAINTENANCE	
OI	NONE
OII	
DISMANTLING/DEMOLITION	
DI	NONE
DII	

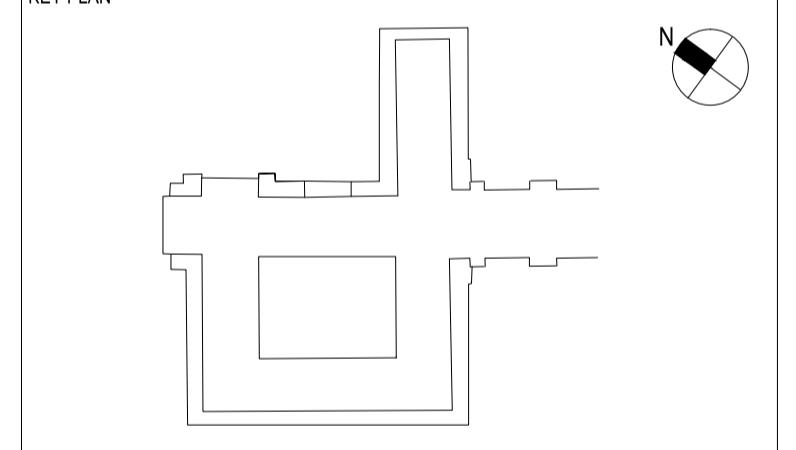
NOTE - TO BE READ IN CONJUNCTION WITH RISK REGISTER

LEGEND

1	K10125A GYPWALL CLASSIC (BG type A206186) - 100MM OVERALL. REF DWG 701
2	K10125B GYPWALL CLASSIC (BG type A206003) - 100MM OVERALL. REF DWG 702
3	K10145A SHAFTWALL (A3060306) - NOMINAL 107MM OVERALL. REF DWG 703
4	K10165A GYPLINER UNIVERSAL (BG type B226008A) - NOMINAL 60MM OVERALL. REF DWG 704
5	K10125C GYPWALL CLASSIC (BG type A206142) 60MIN FIRE RATED - NOMINAL 122MM OVERALL. REF DWG 705
6	L20454A ACOUSTIC OPERABLE WALL-SEE DRG SOAS-A-DET-GEN-ZZ-756
7	K30130A DOUBLE GLAZED PARTITIONS & DOUBLE GLAZED FLUSH DOORS
8	K30130C SINGLE GLAZED PARTITIONS WITH SLIDING DOORS
9	K10155B GYPLINER IWL (BG type B226003D) 30MIN FIRE RATED - NOMINAL 95MM OVERALL
10	K10155A GYPLINER IWL (BG type B226003A) - NOMINAL 95MM OVERALL
13	K30130A SOLID PANEL
14	F10355B 100MM CONCRETE BLOCKWORK TO LOWER GROUND TOILETS AND INFILL OF INTERNAL OPENINGS UP TO 2.9M F10355A 140 MM CONCRETE BLOCKWORK FOR OPENINGS ABOVE 2.9M HIGH F10355B 75MM CONCRETE BLOCKWORK WHERE REQUIRED
15	F10355C CONCRETE BLOCKWORK
16	L20490 FULL HEIGHT GLAZED CURTAIN WALLING SCREEN
17	K10125E GYPWALL CLASSIC (BG type A206015) 30MIN FIRE RATED - NOMINAL 122MM OVERALL
18	K10125D GYPWALL CLASSIC (BG type A206079) 120MIN FIRE RATED - NOMINAL 122MM OVERALL

SKE-7 SKIRTING TO MATCH EXISTING FOR SKIRTING TYPES REFER TO DRAWING SOAS-A-DET-GEN-XX-741
 SKN-7 NEW SKIRTING PROFILE

REV	DATE	DESCRIPTION	DWN	CHK/APP
4	09.12.14	REVISIONS AS HIGHLIGHTED TO SUIT GRAHAM'S COMMENTS	HB	EF/MD
3	14.11.14	WALL TYPE LEGEND SHORTENED WITH FIRE RATINGS ADDED WHERE RELEVANT	GM	LT/MD
2	03.10.14	ISSUE FOR CONSTRUCTION	HT	GM/LT
1	19.09.14	ISSUE FOR REVIEW	HT	LT/CF



PROJECT STATUS: **CONSTRUCTION**

CLIENT: **GRAHAM CONSTRUCTION**

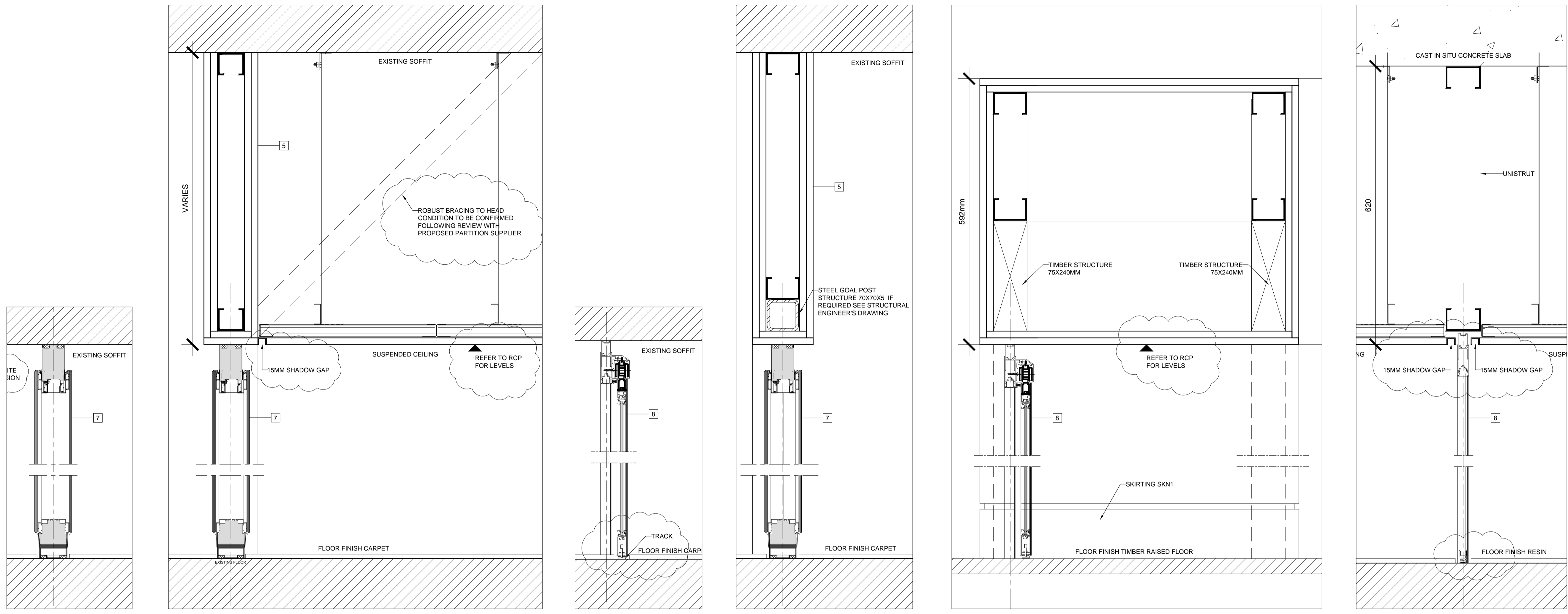
mace
 155 Moorgate, London, EC2M 6XB
 www.macegroup.com

PROJECT TITLE: **SOAS INTO SENATE HOUSE MALET STREET LONDON, WC1E 7HU**

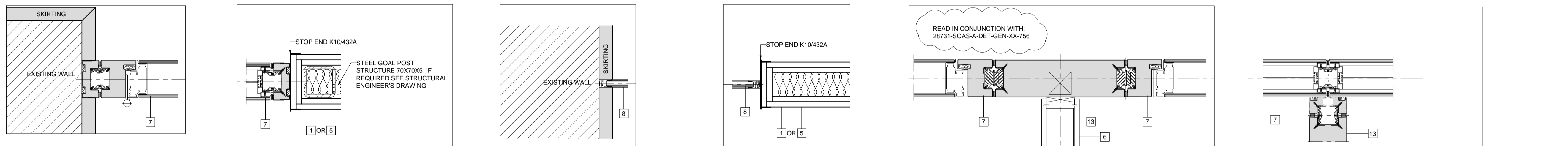
DRAWING TITLE: **PROPOSED SYSTEM PARTITIONS DETAILS SHEET1**

PROJECT NO.	28731	DRAWN BY	HT	DATE	19/09/14
CHK BY	LT	DATE	19/09/14		
APPD BY	CF	DATE	25/07/13		
PROJECT CODE	SOAS - A - DET - GEN - XX - 757	VIEW TYPE		VIEW CAT.	
SHEET NO.	1 of 1	SCALE	1:100	ORIG. SHEET SIZE	REV. C 4

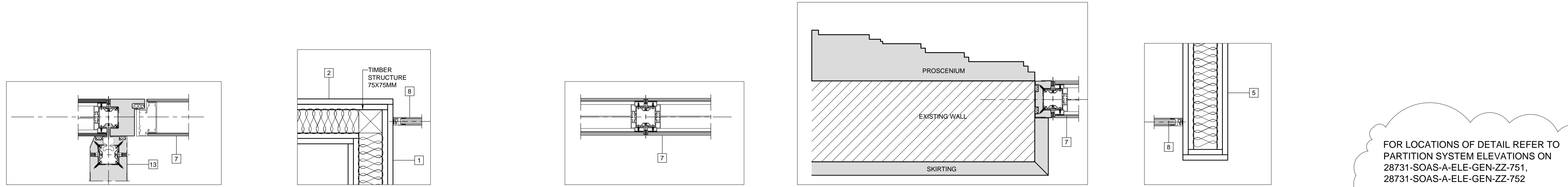
INFORMATION HANDLING CLASSIFICATION: **UNRESTRICTED**



1 SECTION 1 TYPE 7 FLUSH GLAZED PANEL ON EXISTING SOFFIT 1:5
2 SECTION 2 TYPE 7 FLUSH GLAZED PANEL ON PLASTERBOARD BULKHEAD 1:5
3 SECTION 3 TYPE 8 SLIDING GLAZED DOOR ON EXISTING SOFFIT 1:5
4 SECTION 4 TYPE 7 FLUSH GLAZED PANEL ON PLASTERBOARD BULKHEAD WITH GOALPOST STRUCTURE 1:5
5 SECTION 5 TYPE 8 FLUSH GLAZED PANEL ON PLASTERBOARD BULKHEAD WITH DOUBLE GOALPOST STRUCTURE 1:5
6 SECTION 6 TYPE 8 FLUSH GLAZED PANEL WITH SUSPENDED CEILING 1:5



A PLAN SECTION A TYPE 7 ON EXISTING WALL 1:5
B PLAN SECTION B TYPE 7 ON NEW WALL 1:5
C PLAN SECTION C TYPE 8 ON EXISTING WALL 1:5
D PLAN SECTION D TYPE 8 ON NEW WALL 1:5
E PLAN SECTION E TYPE 7 PANEL AND TYPE 13 CONNECTION 1:5
F PLAN SECTION F TYPE 7 PANELS AND TYPE 13 CONNECTION 1:5



G PLAN SECTION G TYPE 7 DOOR/PANEL AND TYPE 13 CONNECTION 1:5
H PLAN SECTION H TYPE 8 ON NEW WALL WITH TIMBER STRUCTURE 1:5
J PLAN SECTION J TYPE 7 GLASS TO GLASS PANEL 1:5
K PLAN SECTION K TYPE 7 ON EXISTING WALL 1:5
L PLAN SECTION L TYPE 8 ON NEW WALL 1:5

FOR LOCATIONS OF DETAIL REFER TO PARTITION SYSTEM ELEVATIONS ON 28731-SOAS-A-ELE-GEN-ZZ-751, 28731-SOAS-A-ELE-GEN-ZZ-752