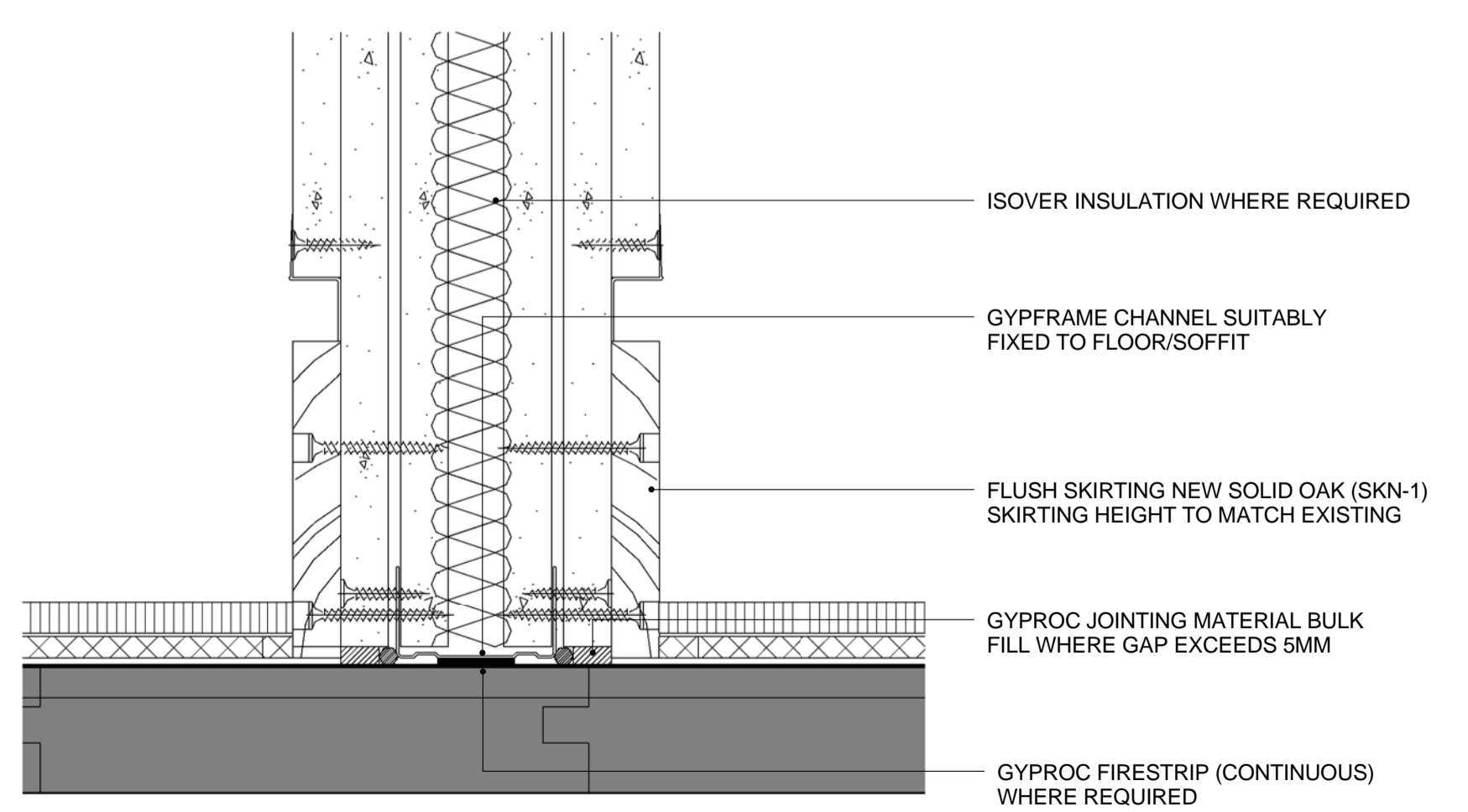
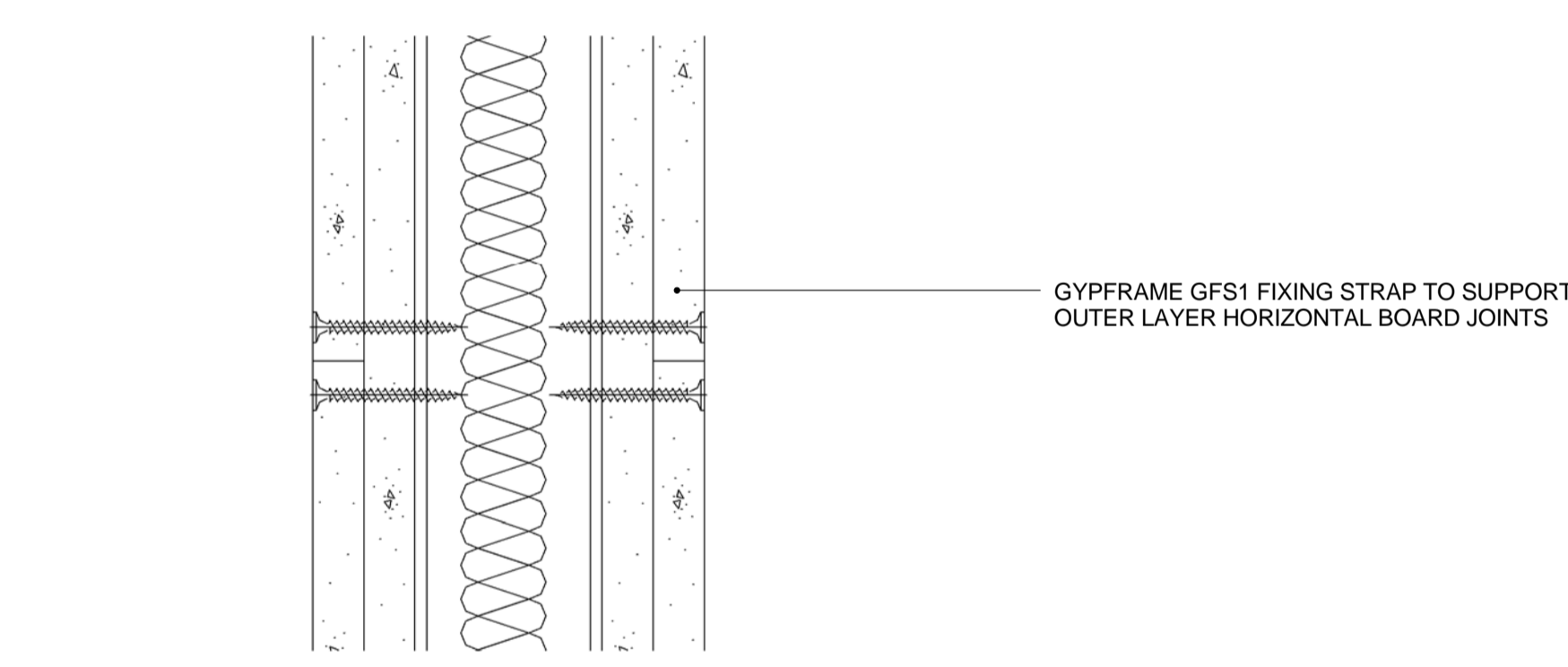
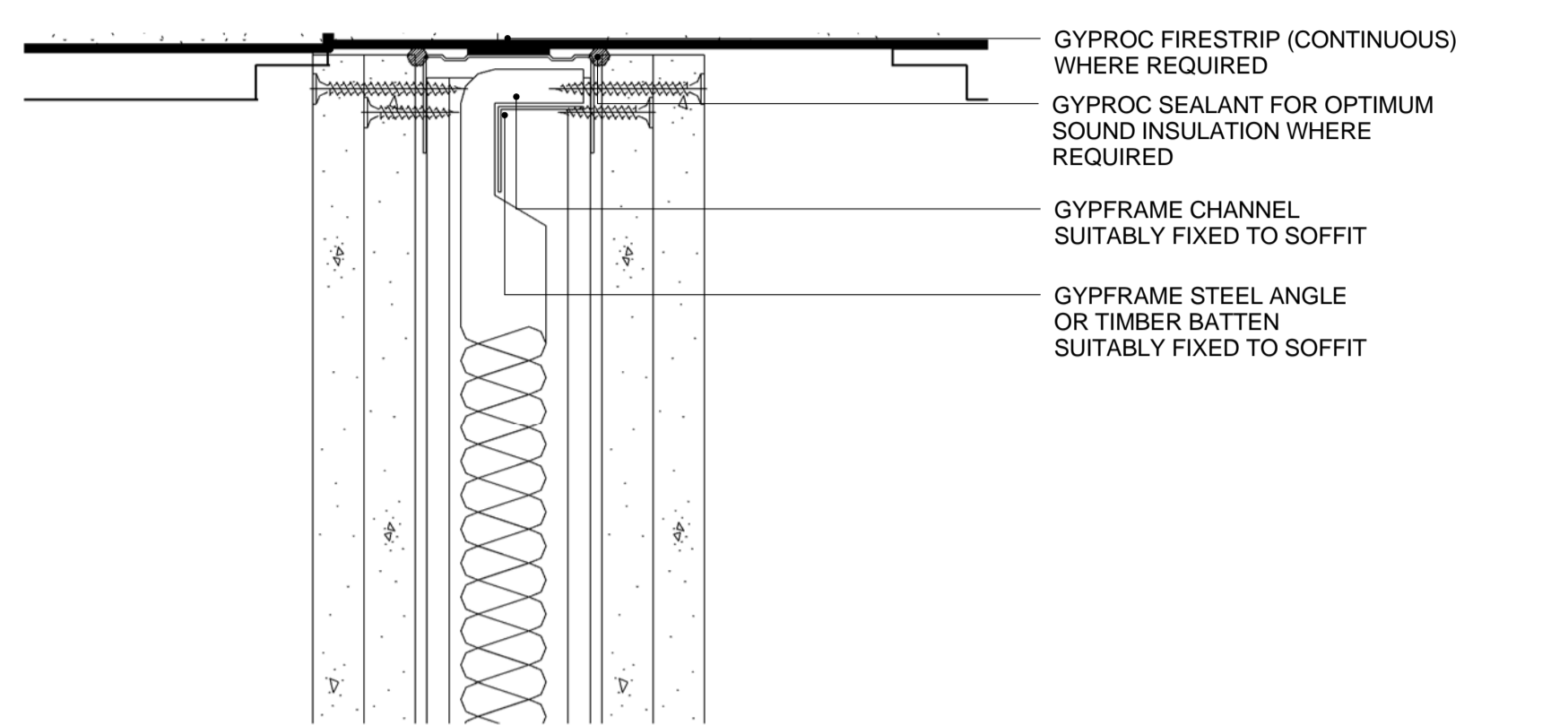


**1** PROPOSED DRY LINING PARTITION DETAIL SECTION  
1:10



**2** DETAIL OF PROPOSED DRY LINING PARTITION  
1:2

© COPYRIGHT Mace Group  
NOT TO BE REPRODUCED WITHOUT WRITTEN PERMISSION.  
BECAUSE OF POSSIBLE SCALING ERRORS IN ELECTRONIC AND HARDCOPY REPRODUCTION DO NOT SCALE FOR CONSTRUCTION PURPOSES.  
ALL DIMENSIONS TO BE CHECKED & VERIFIED ON SITE PRIOR TO CONSTRUCTION.

**Safety first. Second nature.**

Safety, Health and Environment Information

The significant unusual hazards / risks associated with this type of work are noted as:

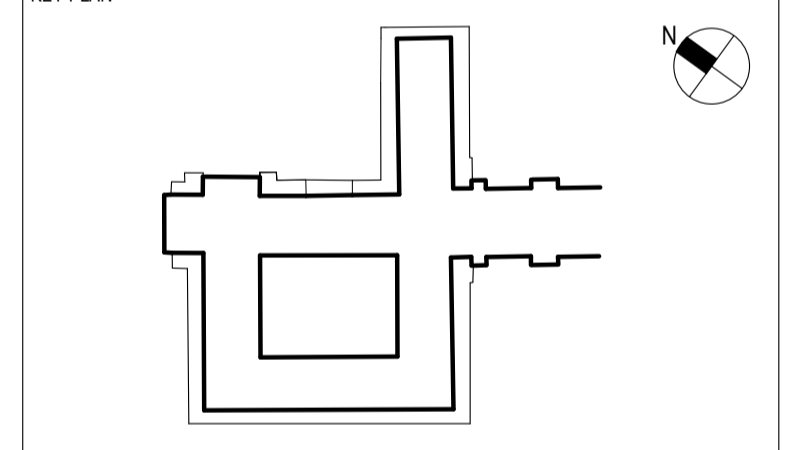
CI		CONSTRUCTION
CII		
OI		OPERATION AND MAINTENANCE
OII		
DI		DISMANTLING/DEMOLITION
DII		

NOTE - TO BE READ IN CONJUNCTION WITH RISK REGISTER

FOR SKIRTING TYPES REFER TO DRAWING: SOAS-A-SET-GEN-XX-741

2	21.11.14	FIRE AND ACOUSTIC BARRIERS DETAILS ADDED	GM	EFMD
1	14.11.14	FIRST CONSTRUCTION ISSUE	GM	ILTMD

REV	DATE	DESCRIPTION	DWN	CHK/APP



PROJECT STATUS: CONSTRUCTION



PROJECT TITLE: SOAS INTO SENATE HOUSE MALET STREET LONDON, WC1E 7HU

DRAWING TITLE: PROPOSED DRY LINING DETAILS

PROJECT NO.	DRAWN BY	HI	DATE	09/13/13
28731	CHK BY	CF	DATE	09/13/13
	APPD BY		DATE	09/13/13

PROJECT CODE	DISC	VIEW TYPE	VIEW CAT	LEVEL	DWG. NO.
SOAS - A	- DET - GEN - XX - 755				
SHEET NO.	SCALE	ORIG. SHEET SIZE	REV.		
1 of 1	As indicated	@ A1	C 2		

INFORMATION HANDLING CLASSIFICATION: UNRESTRICTED