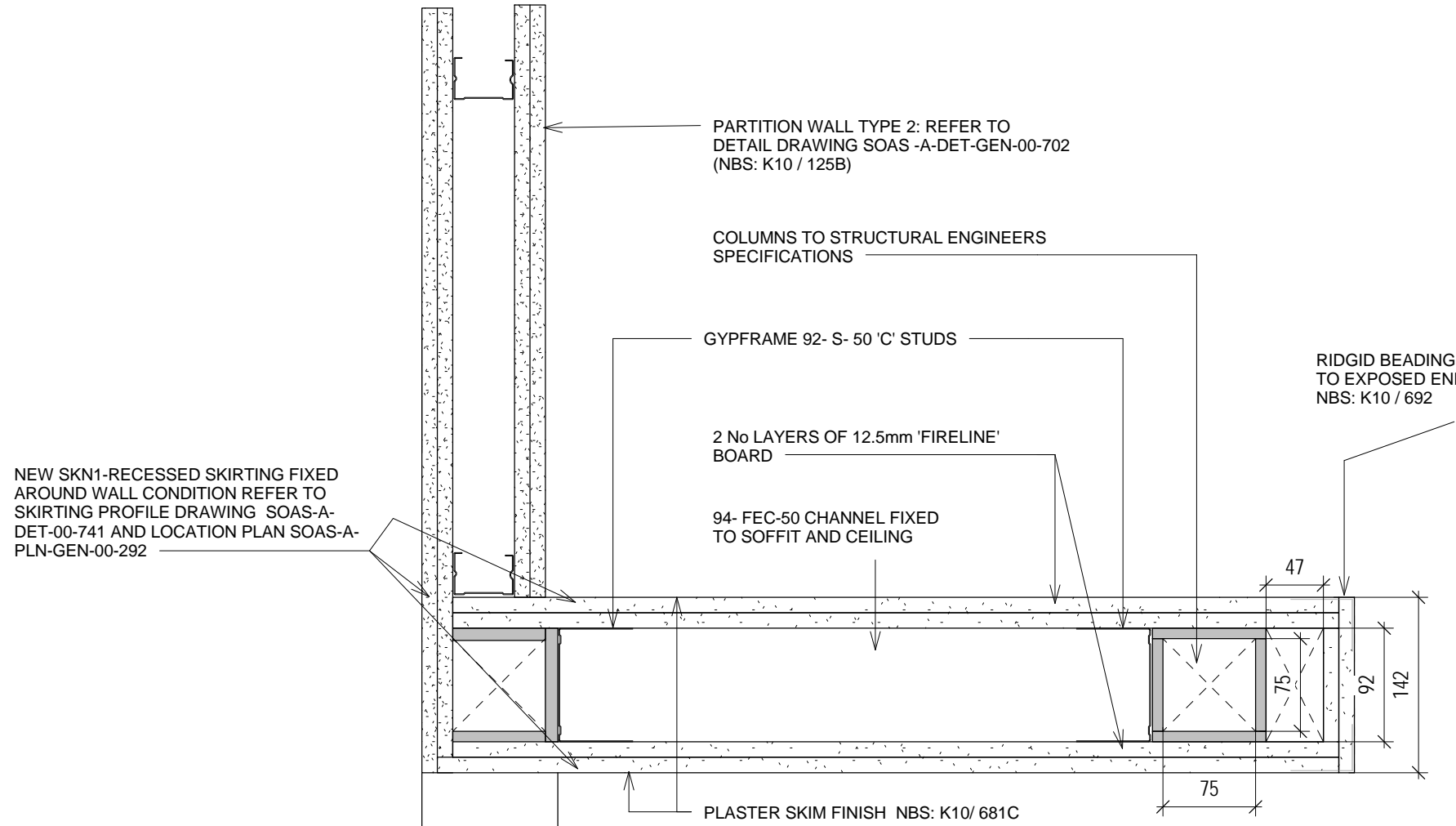
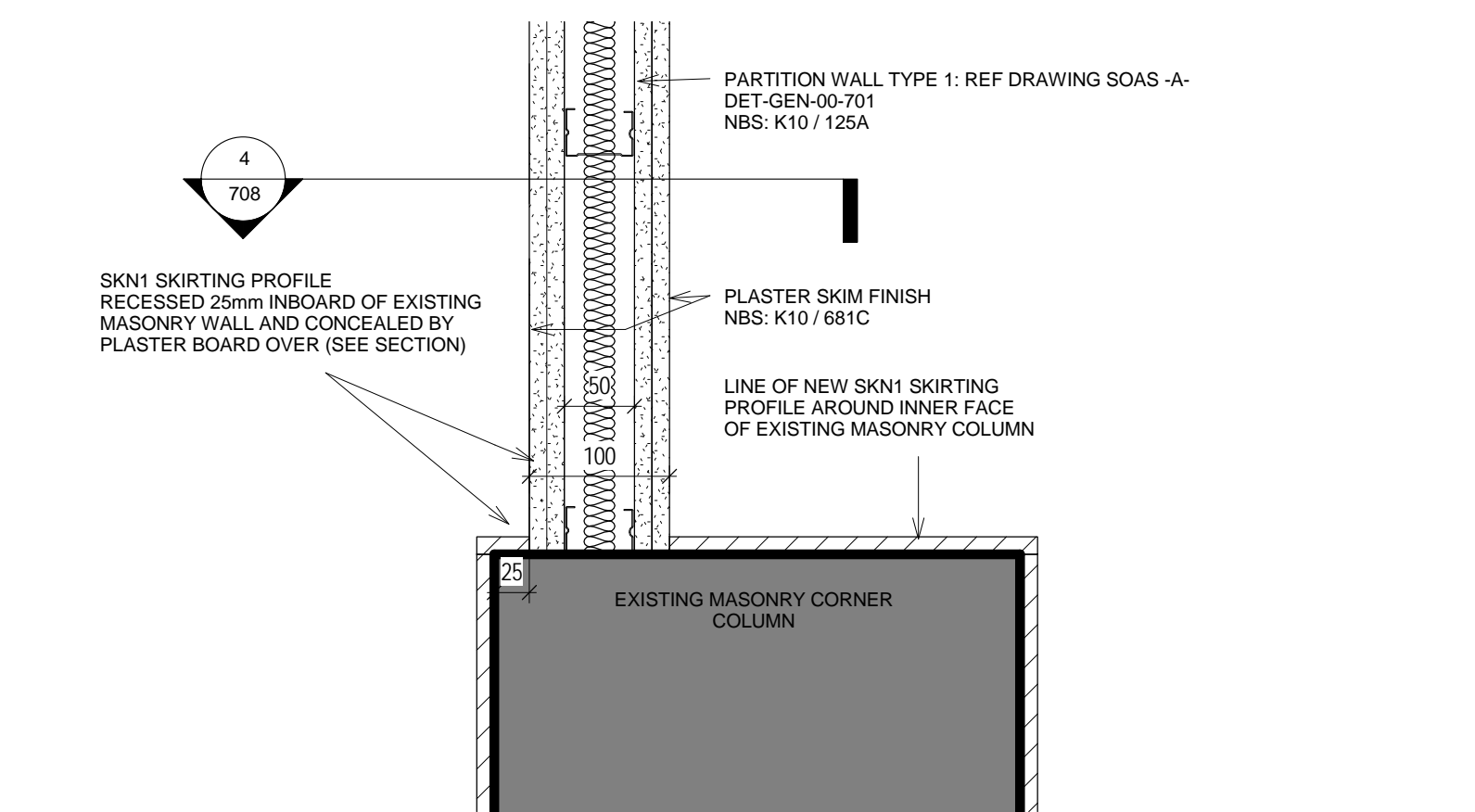


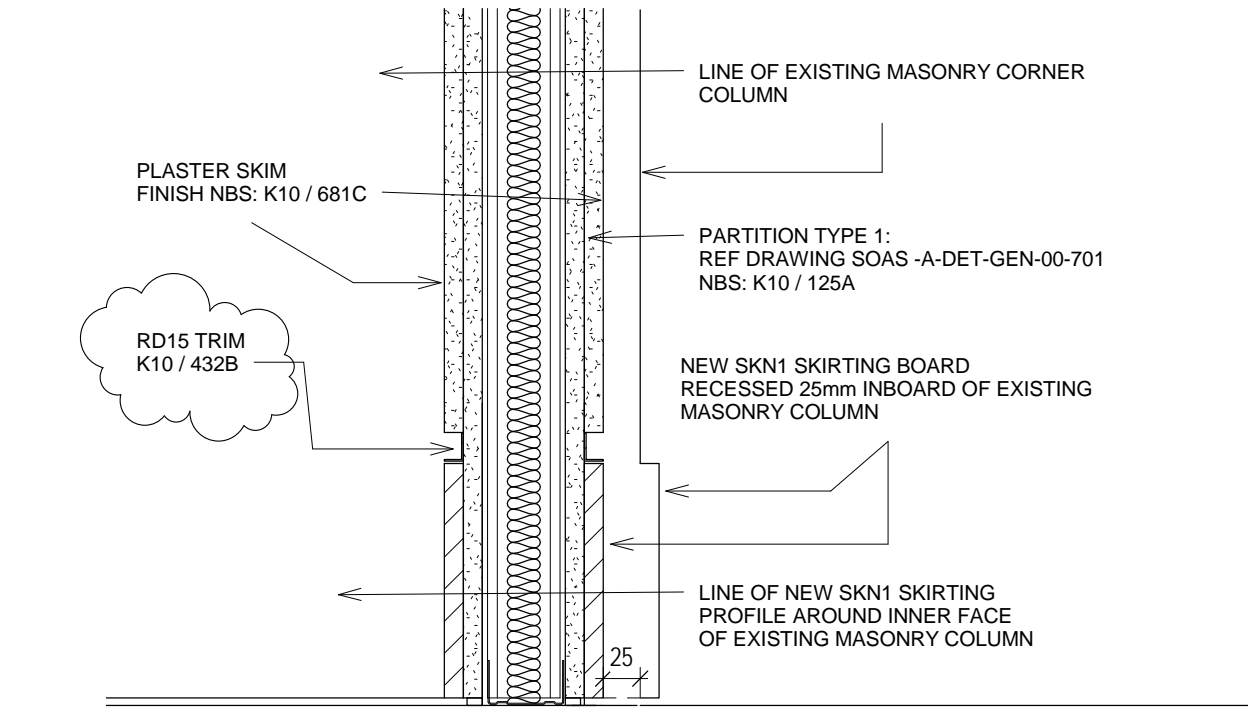
1 SHAFT WALL JUNCTION
1:5



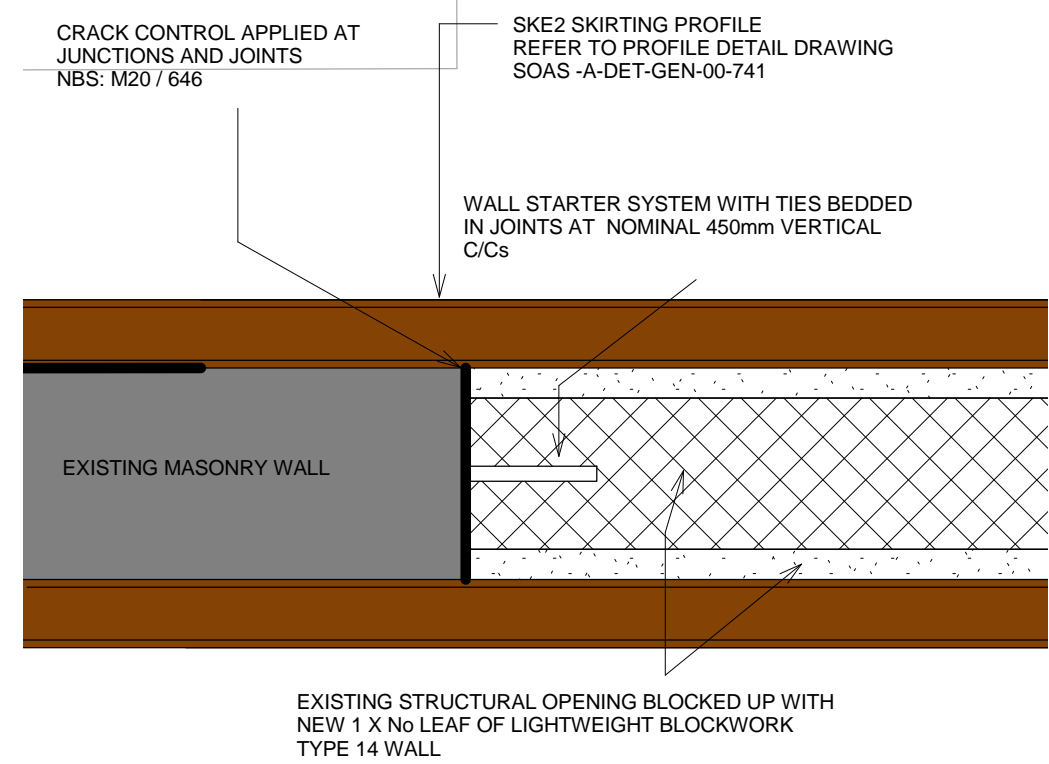
2 PARTITION CONDITION TO TIMBER COLUMNS (GROUND FLOOR)
1:5



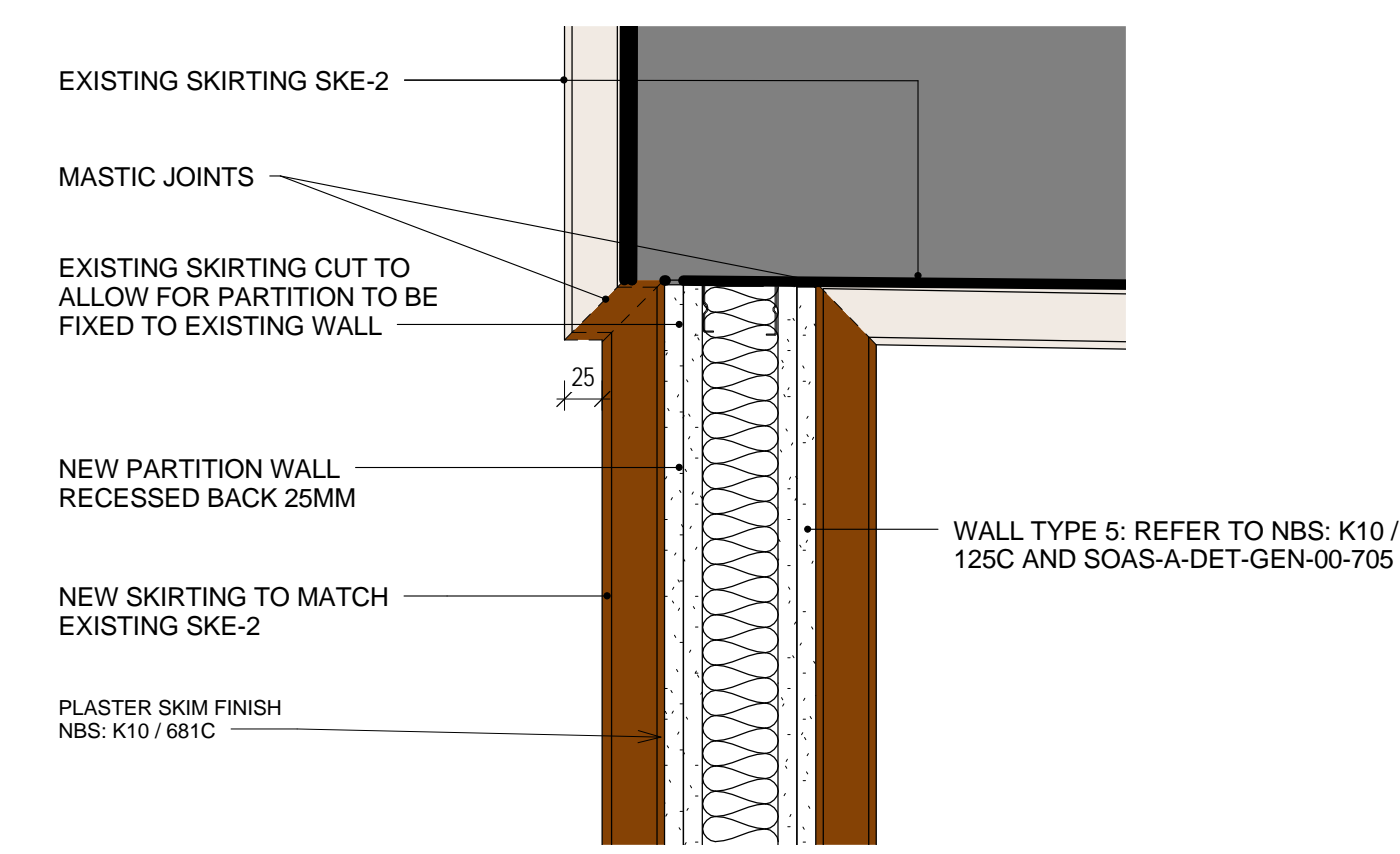
3 RECESSED PARTITION AND SKIRTING CONDITION (PLAN)
1:5



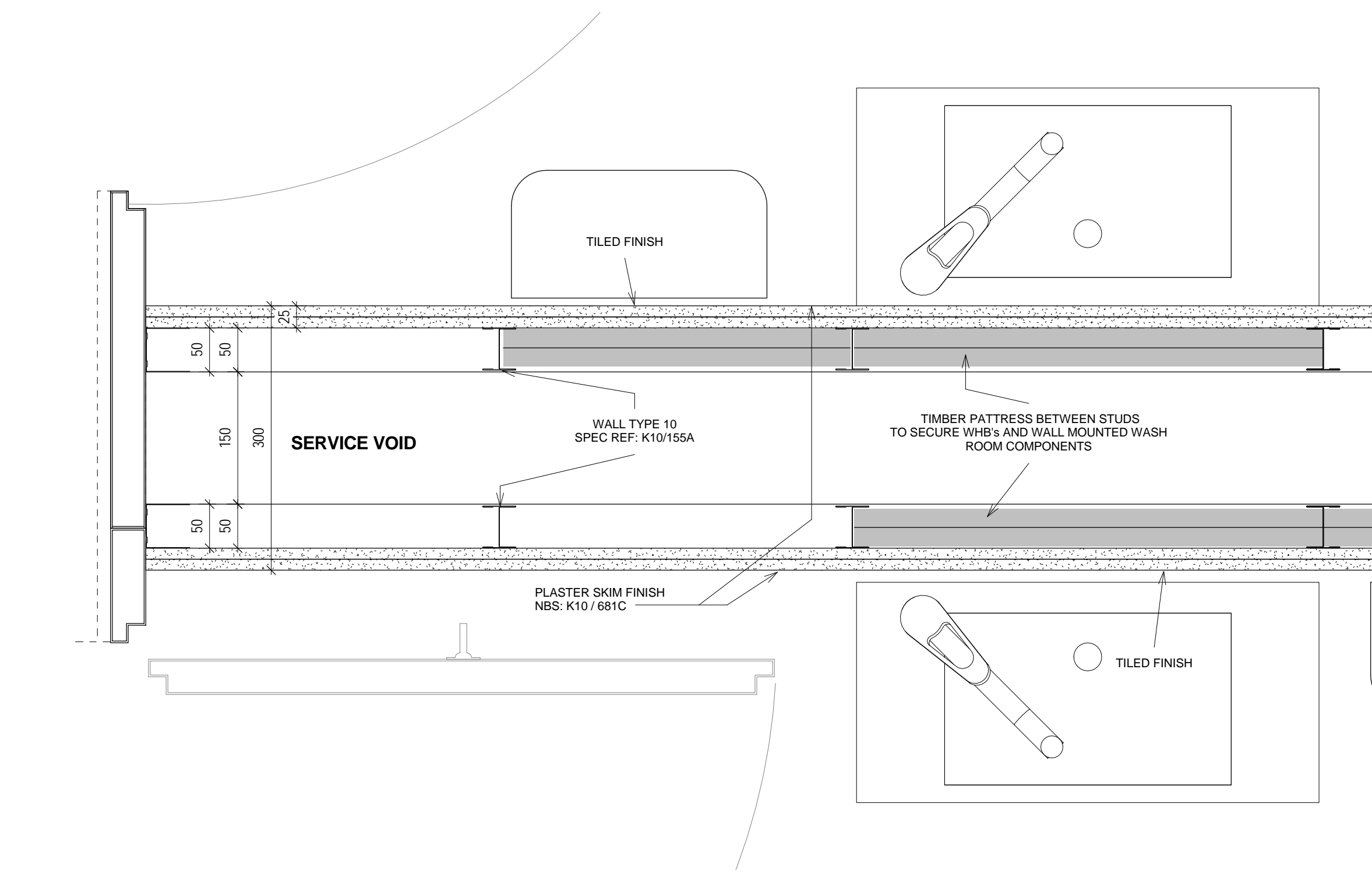
4 RECESSED PARTITION AND SKIRTING (SECTION)
1:5



5 TYPICAL DOOR OPENING WITH BLOCK / BRICK INFILL
1:5



6 RECESSED PARTITION WITH SKIRTING TO MATCH EXISTING
1:5



7 WALL TYPE 10_TOILET PARTITION WITH SERVICE VOID
1:5

© COPYRIGHT Mace Group
NOT TO BE REPRODUCED WITHOUT WRITTEN PERMISSION.
BECAUSE OF POSSIBLE SCALING ERRORS IN ELECTRONIC AND HARD COPY
REPRODUCTION DO NOT SCALE FOR CONSTRUCTION PURPOSES.
ALL DIMENSIONS TO BE CHECKED & VERIFIED ON SITE PRIOR TO CONSTRUCTION.

Safety first. Second nature.

Safety, Health and Environment Information

The significant unusual hazards / risks associated with this type of work are noted as:

| CONSTRUCTION | |
|--------------|------------------------------------|
| CI | CDM32 ADJESS TO HOLLOW POTS |
| CII | |

| OPERATION AND MAINTENANCE | |
|---------------------------|------|
| OI | NONE |
| OII | |

| DISMANTLING/DEMOLITION | |
|------------------------|------|
| DI | NONE |
| DII | |

NOTE - TO BE READ IN CONJUNCTION WITH RISK REGISTER

NOTES

- FOR RELEVANT WALL AND SKIRTING LOCATIONS REFER TO DOOR / WINDOW AND PARTITION KEY PLANS SOAS-A-PLN-GEN-XX-291 - 295
- FOR SKIRTING, DADO AND CORNICE TYPES REFER TO SOAS-A-DET-GEN-741
- NOTE: ALL SKIRTINGS, DADOS AND CORNICES TO MATCH EXISTING NEED SURVEYS PRIOR TO WORK TO ENSURE AN ACCURATE REPLICA IS PRODUCED.
- ALL EXISTING SKIRTING HEIGHTS TO BE CONFIRMED ON SITE PRIOR TO WORKS COMMENCEMENT

THE ACOUSTIC AND FIRE RATING REQUIREMENT OF THE PARTITIONS MAY BE LESS THAN WHAT IS STATED IN THE SPECIFICATION, DEPENDING ON SPECIFIC LOCATION

| REV | DATE | DESCRIPTION | AM | LT | GM | LTMD |
|-----|----------|--------------------------------------------------------------------------------------------|----|----|----|------|
| 2 | 14.11.14 | TRIM SPECIFICATION ADDED TO DETAIL 4. PARTITIONS ACOUSTIC AND FIRE REQUIREMENTS NOTE ADDED | | | GM | LTMD |
| 1 | 03.10.14 | CONSTRUCTION ISSUE | AM | LT | | |

KEY PLAN

PROJECT STATUS: **CONSTRUCTION**

CLIENT: **GRAHAM CONSTRUCTION**

mace
155 Moorgate, London, EC2M 6XB
www.macegroup.com

PROJECT TITLE: **SOAS INTO SENATE HOUSE MALET STREET LONDON, WC1E 7HU**

DRAWING TITLE: **PARTITION DETAILS SHEET 3**

| PROJECT NO. | DRAWN BY | DL | DATE | 30/09/14 |
|-------------|----------|----|------|----------|
| 28731 | CHK BY | LT | DATE | 30/09/14 |
| | APPD BY | CF | DATE | 30/09/14 |

| PROJECT CODE | DISC | VIEW TYPE | VIEW CAT | LEVEL | DWG. NO. |
|-----------------------------|------|-----------|----------|-------|----------|
| SOAS - A - DET - GEN - XX - | | | | | 708 |

| SHEET NO. | SCALE | ORIG. SHEET SIZE | REV. |
|-----------|--------------|------------------|------|
| 1 of 1 | As indicated | @ A1 | C 2 |

INFORMATION HANDLING CLASSIFICATION

UNRESTRICTED