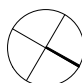
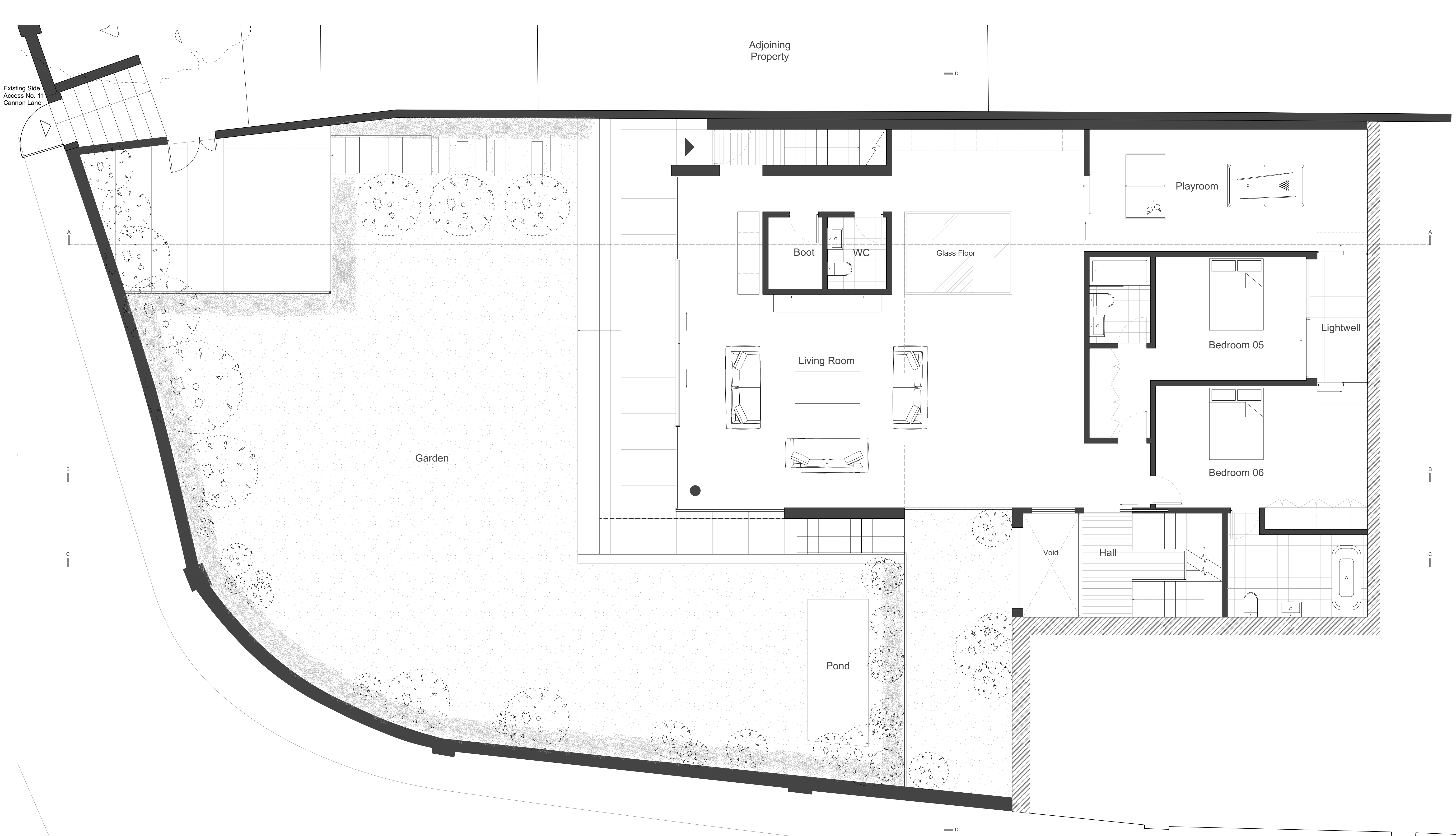


No.	Revision.	Date.

PLANNING ISSUE		Project: 11 Cannon Lane	
<div></div> <div><div>0</div><div><div></div><div></div><div></div><div></div><div></div></div><div>2.5 M</div></div> <div>NOTES: The copyright of this schedule / drawing remains with the Architect. No part of this schedule / drawing may be reproduced in any form or by any means without the written permission of Greenway &amp; Lee Architects.</div>	Drawing Title: Proposed Basement Floor Plan		
	Drawing No: AP - 101		
	Date: 01/12/2014	Scale: 1:100@A3 1:50@A1	
	<div>greenway architects</div> <div>Branch Hill Mews, London NW3 7LT Tel +44 (0)20 7435 6091 Fax +44 (0) 20 7435 6081</div>		



No.	Revision.	Date.

PLANNING ISSUE		Project: 11 Cannon Lane	
<div>02.12.2014</div> <div>NOTES: The copyright of this schedule / drawing remains with the Architect. No part of this schedule / drawing may be reproduced in any form or by any means without the written permission of Greenway &amp; Lee Architects.</div>	<div>0</div> <div>2.5 M</div>	Drawing Title: Proposed Lower Ground Floor Plan	
	Drawing No: AP - 102		
	Date: 01/12/2014	Scale: 1:100@A3 1:50@A1	
	<b>greenway architects</b> Branch Hill Mews, London NW3 7LT Tel +44 (0)20 7435 6091 Fax +44 (0) 20 7435 6081		



