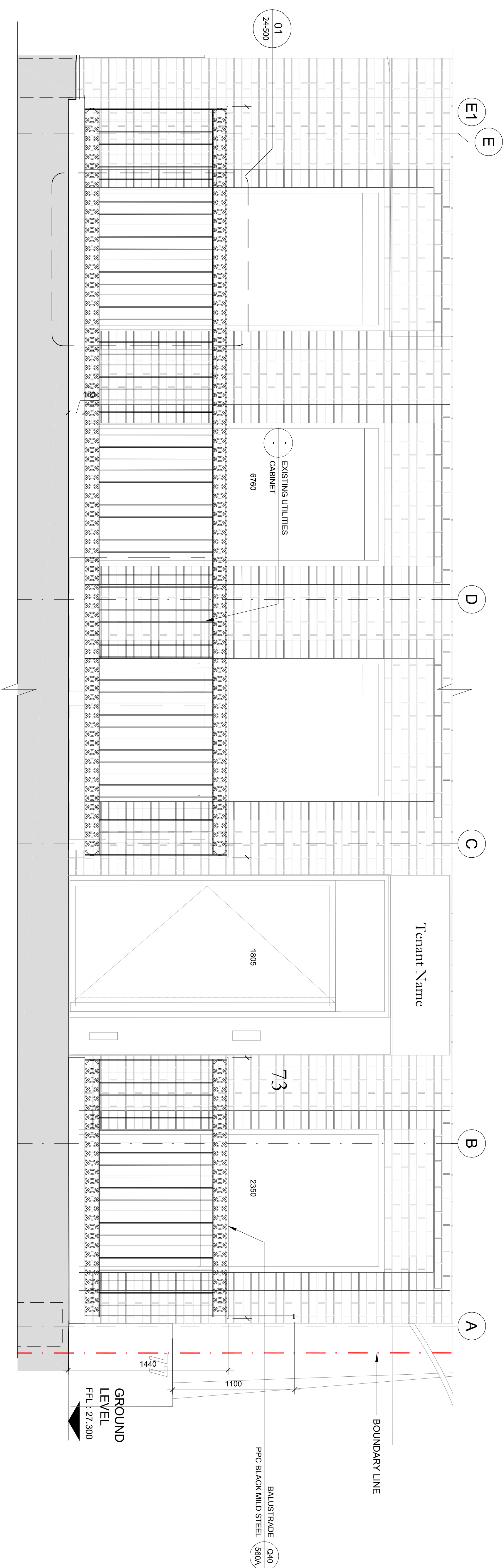
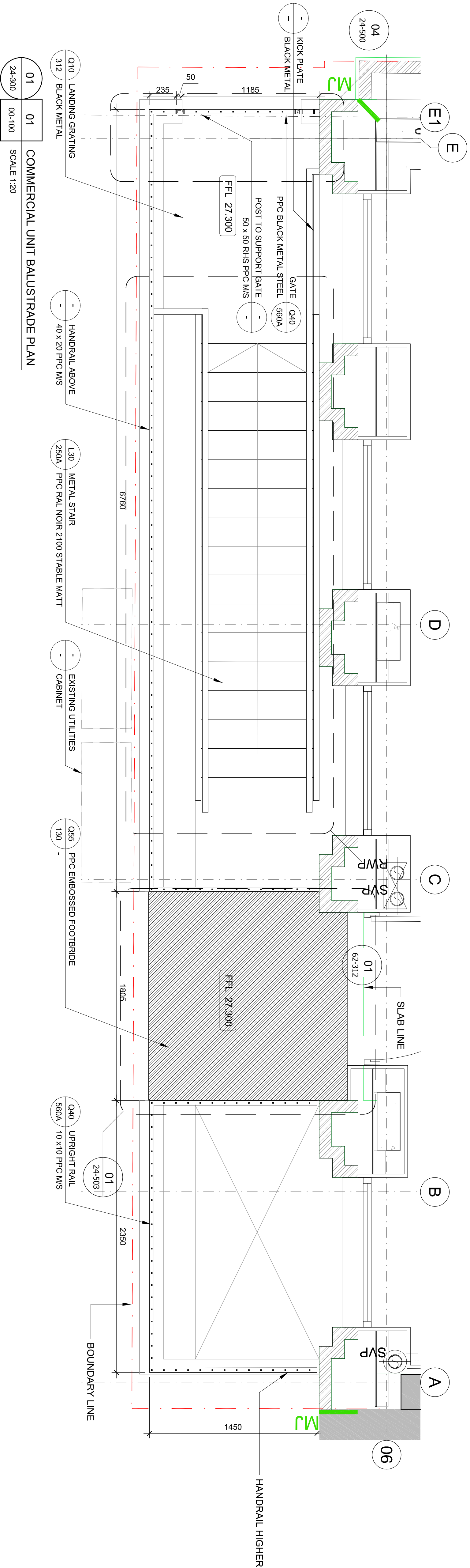


- Notes
- FOR FIRE ESCAPE DETAIL REFER TO DRAWING 21164-09-AR-62-312
 - GREEN LINE DENOTES SLAB EDGE



CDM RISKS & HAZARDS				
Specific risk assessments relating to the drawing are:				
106	207	209	210	

Revised in conjunction with the Project Risk Assessment Schedule.

Important note
All dimensions in millimeters. Unless otherwise stated, drawings must not be scaled and the user is advised to check back to Veretec Ltd. All dimensions and conditions are to be checked on site by the contractor prior to construction. The contractor is responsible for ensuring that the drawings are in accordance with the specifications and drawings. In the event of any detail or dimensional conflict between Veretec Limited drawings, the material must be referred back to Veretec Limited for clarification.

Veretec Limited
38-40 York Way
London N1 9AB
Tel: +44 (0)20 7943 3000
Fax: +44 (0)20 7943 3001
Email: london@veretec.co.uk
Web: www.veretec.co.uk

Client
KNIGHT HARWOOD
Project
73 CHARLOTTE STREET

Title
PROPOSED COMMERCIAL ENTRANCE FENCING

Date	Drawn	Checked	Authorised
JUL 2014	OG	SF	KM
Scale			
1:20@A1			
Issue status			

EDT REVIEW

Drawing number
21164-09-AR-24-300

Client Drawing number
E