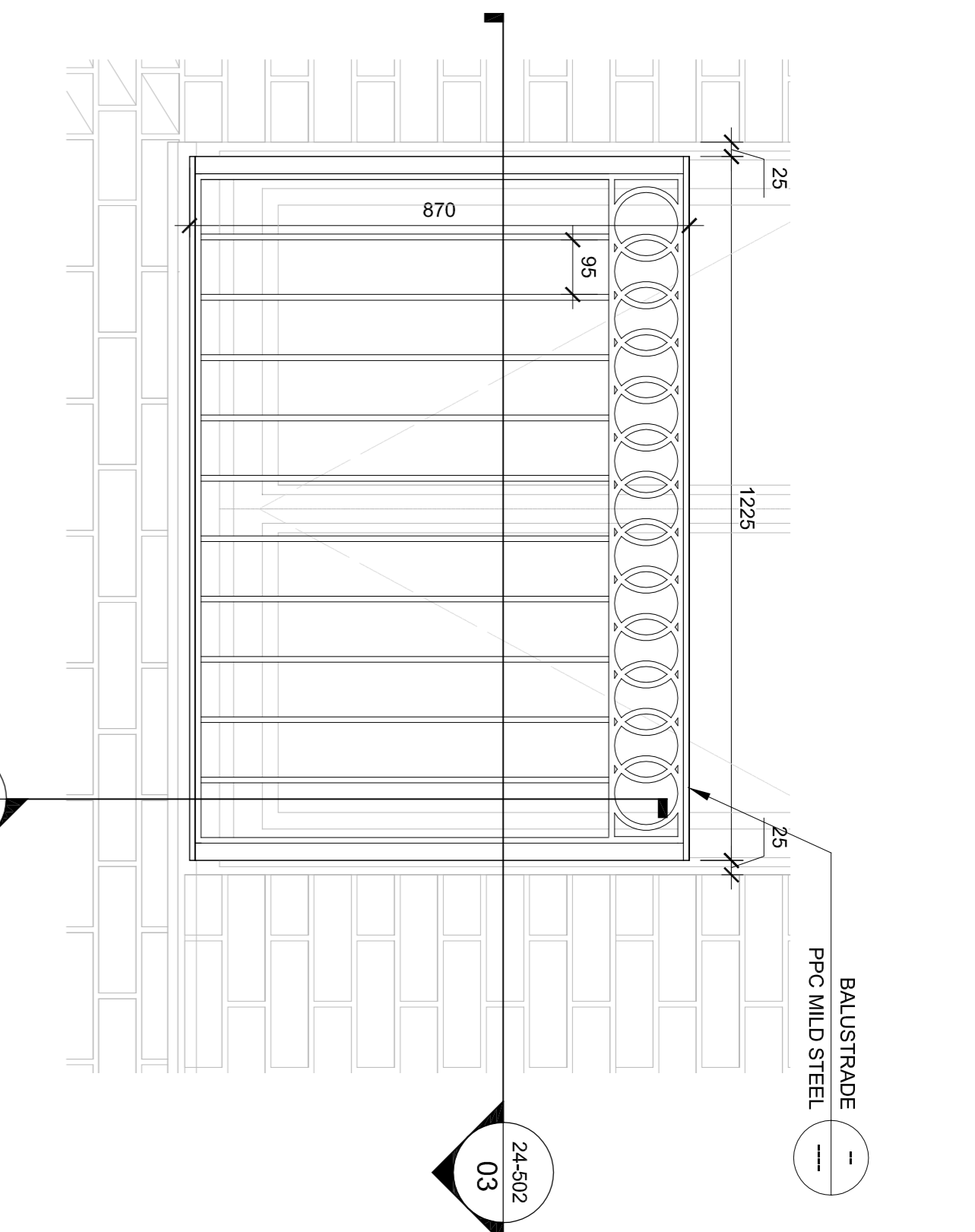
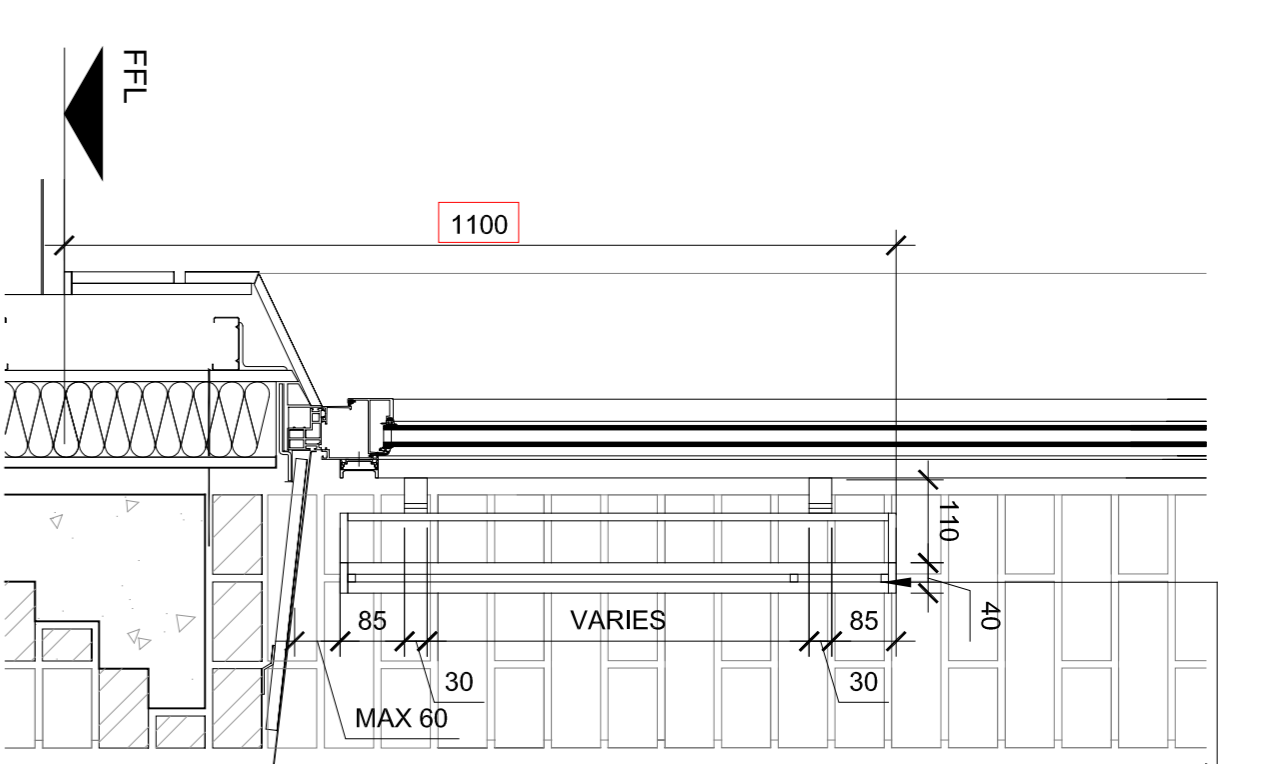


Notes

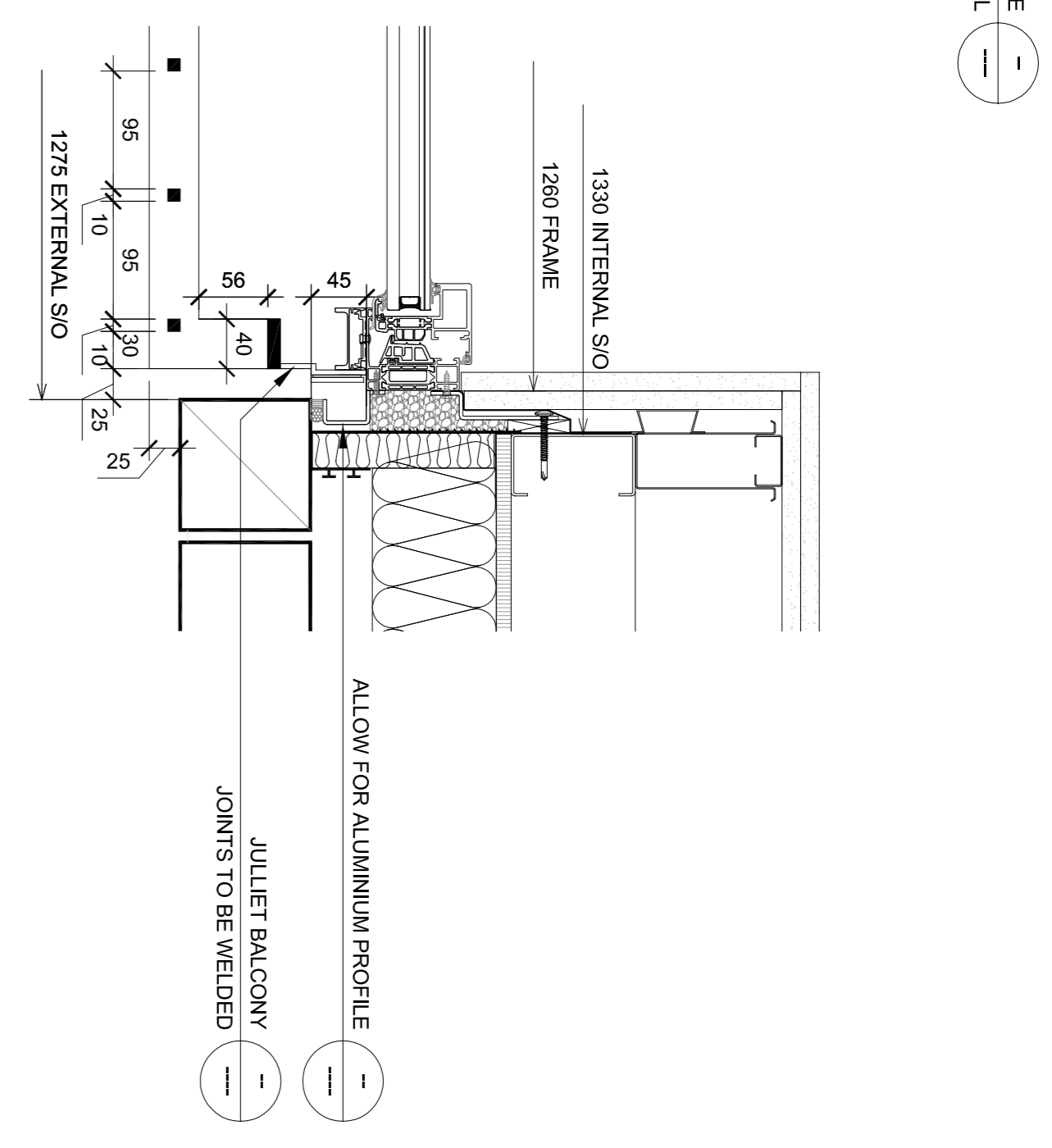
1. BALUSTRADE LOADS TO BE CHECKED BY STRUCTURAL ENGINEERS BEFORE MANUFACTURED AND TO COMPLY TO BS EN 1991-1-1



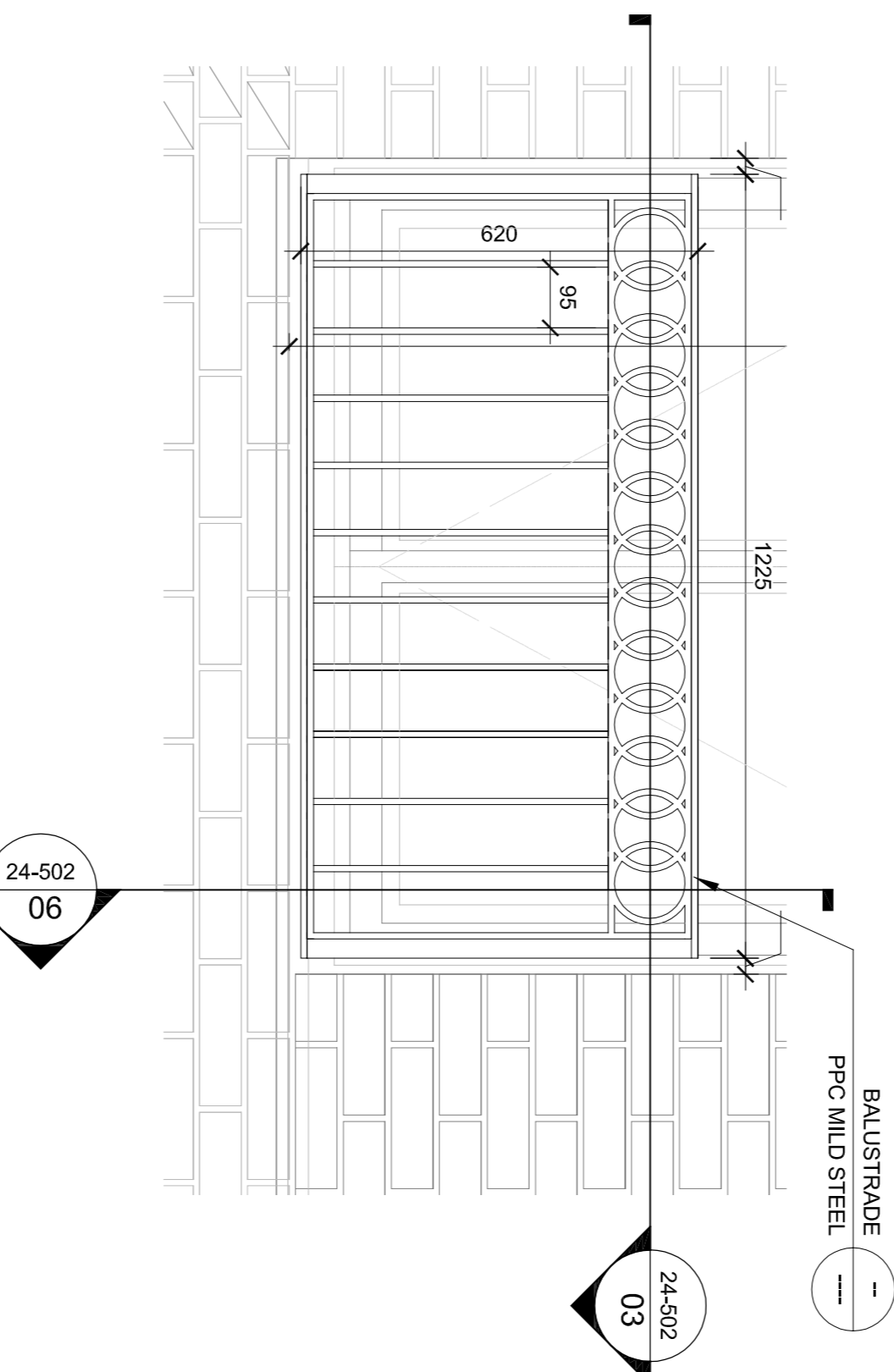
01 00 TYPE 1 (FIRST FLOOR ONLY) ELEVATION
24-502 04-100 SCALE: 1:10



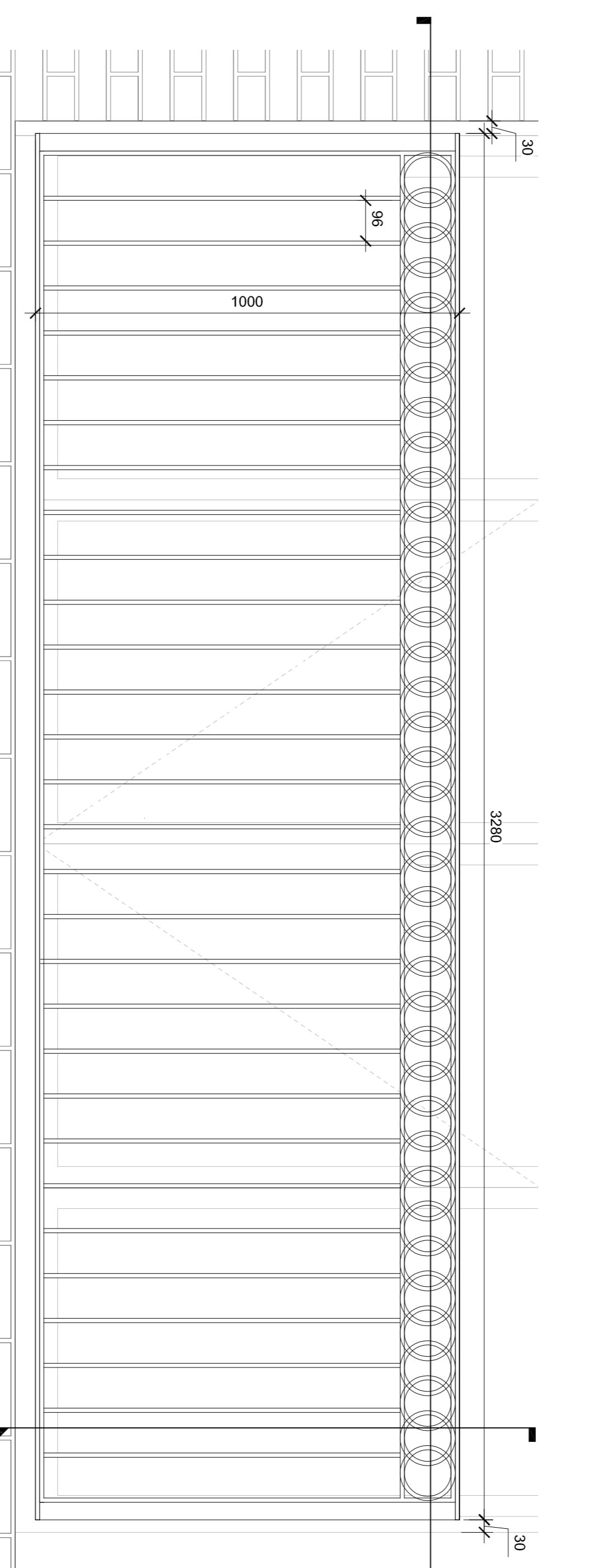
06 02 TYPICAL SECTION
24-502 24-502 SCALE: 1:10



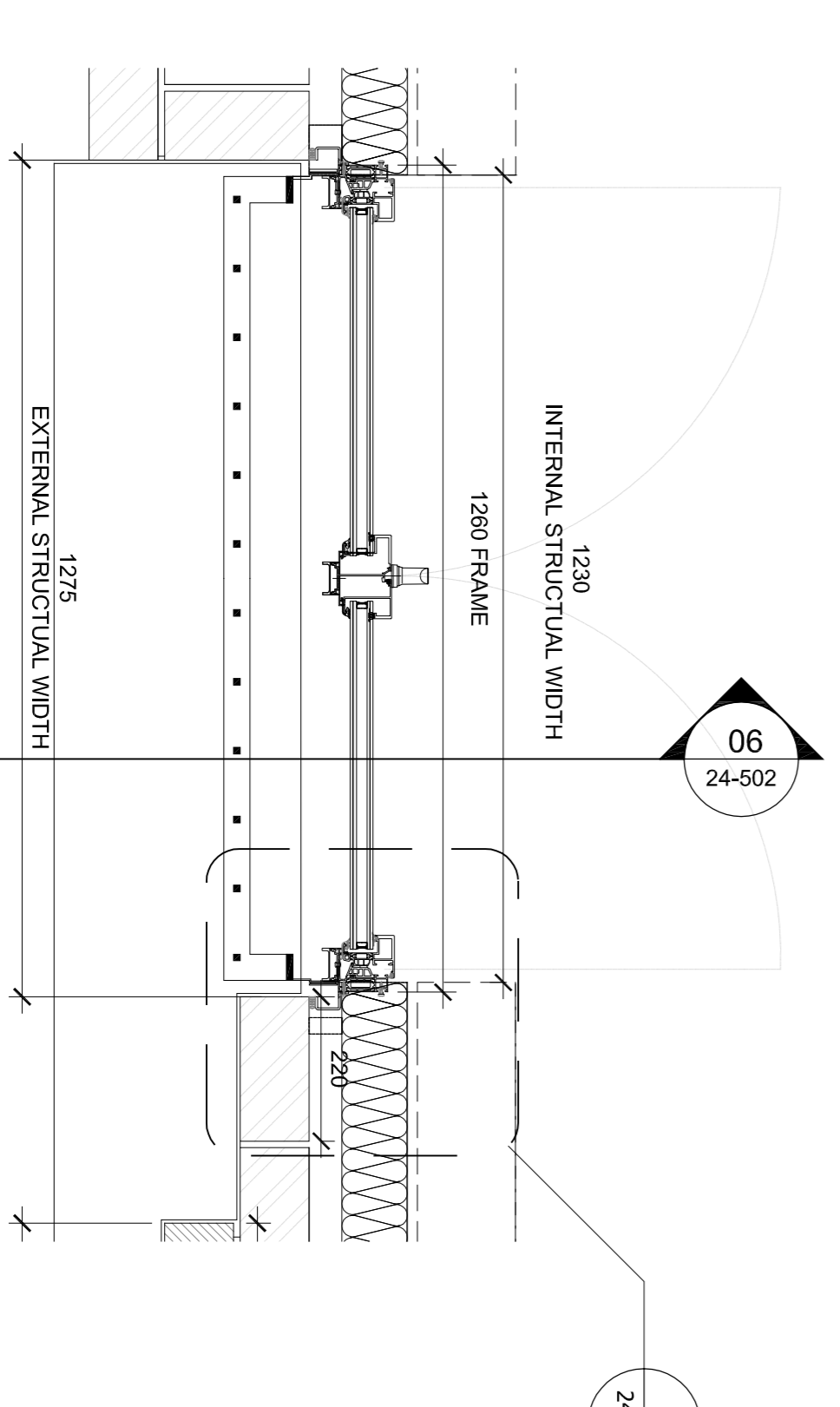
07 03 WINDOW TYPICAL JAMB
24-502 24-502 SCALE: 1:5



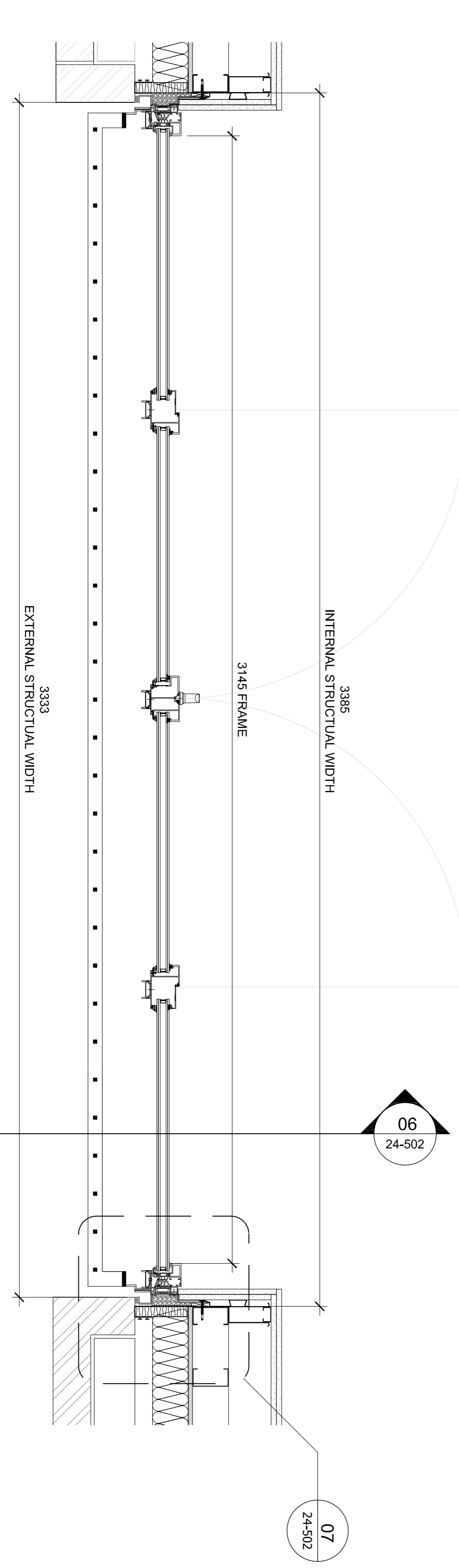
02 00 TYPE 2 (2ND AND 3RD FLOOR) ELEVATION
24-502 04-100 SCALE: 1:10



04 00 TYPE 3 (TOTTENHAM MEWS ELEVATION)
24-502 04-102 SCALE: 1:10



03 00 TYPE 1 & 2 BALUSTRADE PLAN
24-502 00-101 SCALE: 1:10



05 00 TYPE 3 BALUSTRADE PLAN
24-502 00-101 SCALE: 1:10

CDM RISKS & HAZARDS				
Specific risk assessments relating to this drawing are:				
203	209	212	310	
311				

Read in conjunction with the Project Risk Assessment Schedule.

Veretec

B 19/12/2014 - RAILINGS OPENING AMENDED O03
A 02/12/2014 - SITE INSTN. LOCATION FOLLOWING O03
Reviews By: Authorised

IMPORTANT NOTE
All dimensions in millimetres. When dimensions are not given, drawings must not be scaled to suit. Where necessary, refer to the notes.
All dimensions and conditions are to be checked on site by the contractor prior to checking that there is no conflict between the dimensions and drawn dimensions.
In the event of any detail or dimensional conflict between Veretec Limited drawings, the matter must be referred back to Veretec Limited for clarification.

Veretec Limited.
36-40 York Way
London N1 9AB
Tel: +44 (0)20 7943 9199
Fax: +44 (0)20 7943 3201
Email: london@veretec.co.uk
Web: www.veretec.co.uk

Client
KNIGHT HARWOOD
73 CHARLOTTE STREET

Title
JULIET BALCONY DETAIL

Date	Drawn	Checked	Authorised
SEP 2014	OG	SF	KM

Scale: 1:10@A1
Issue status:

CDT REVIEW

Drawing number: 21164-09-AR-24-502
Client Drawing number: 21164-09-AR-24-502
Rev: B