

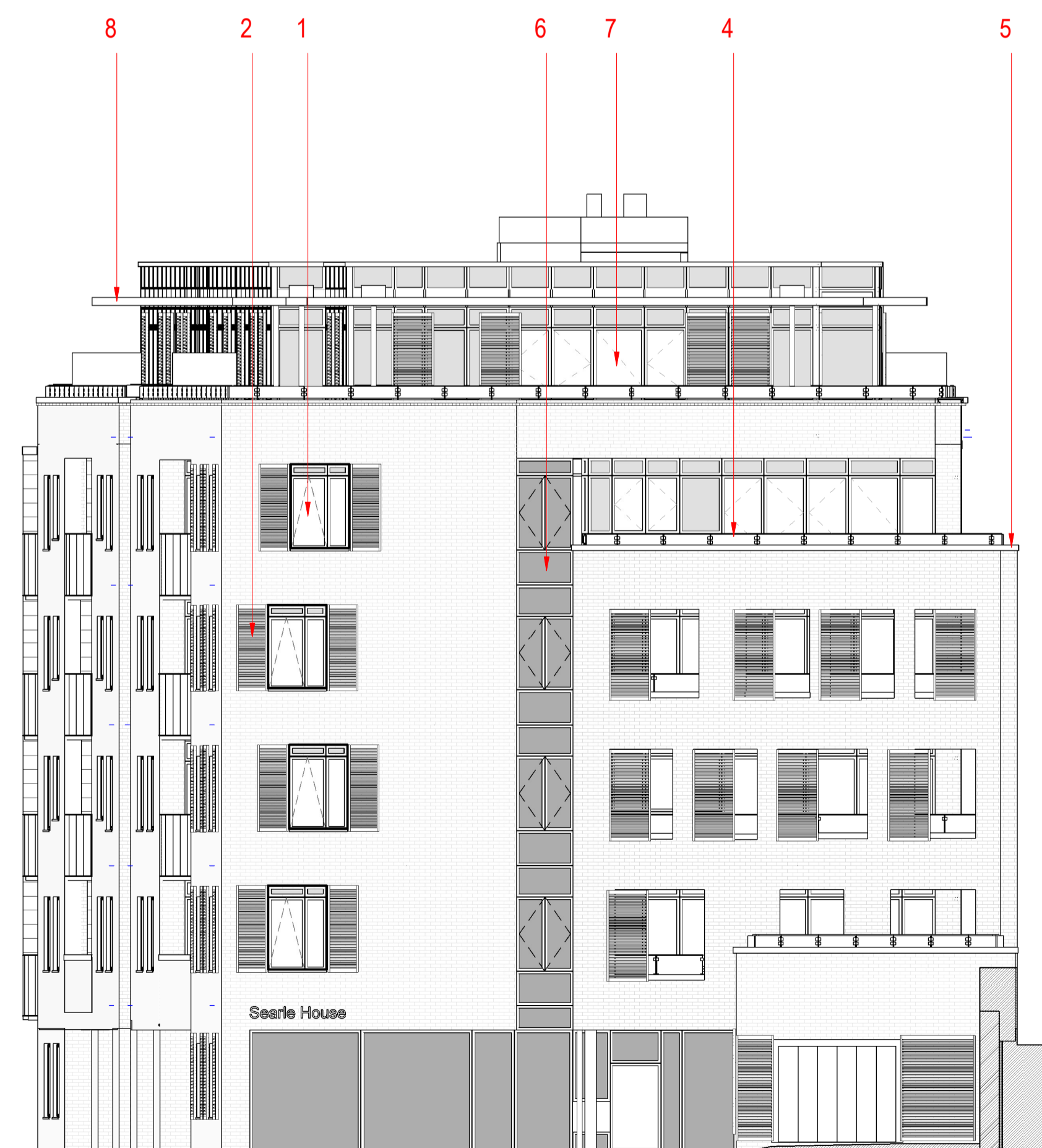


MATERIAL LIST

- 1 - CHARCOAL COMPOSITE WINDOWS AND DOORS, FRAME RAL 7022 BY NORDAN
- 2 - WESTERN RED CEDAR LOUVERS WITH POWDER COATED SCREEN FRAME AND FIXINGS, RAL7022 BY MAPLE SUNSCREENING
- 3 - 10MM TOUGHENED GLASS BALUSTRADE, PAINTED ONE SIDE RAL 9002, POWDER COATED METALWORK, RAL 7022 BY CONVAIR
- 4 - TRANSLUCENT GLASS BALUSTRADE
- 5 - ALUMINIUM POWDER COATED COPPING/FLASHING TO ALL PARAPETS, RAL 7022 BY ROWEAVER
- 6 - THERMALLY BROKEN CURTAIN WALLING SPANDREL GLASS PANEL, RAL 7047, ALUMINIUM POWDER COATED FRAME, RAL 7022 BY APIC
- 7 - THERMALLY BROKEN CURTAIN WALLING TRANSPARENT GLASS PANEL, ALUMINIUM POWDER COATED FRAME, RAL 7022 BY APIC
- 8 - WESTERN RED CEDAR BRISE SOLEIL BLADES WITH POLYESTER POWDER COATED SCREEN FRAME AND FIXINGS, RAL 7022 BY MAPLE SUNSCREENING

Block A - North West Elevation

1 : 100



Block A - South East Elevation

1 : 100

D 1 PM 22.01.15 AK ISSUED FOR PLANNING

REV BY DATE CHK DESCRIPTION
 STATUS

FOR PLANNING

CONTRACTOR

GallifordTry

PROJECT

St Edmunds Terrace, NW8 7QE

CLIENT

THE GUINNESS TRUST

DRAWING TITLE

BLOCK A - NW AND SE ELEVATION

DATE CREATED	DATE AMENDED	SCALE	
21.01.15	22.01.15	1 : 100	@A1
DRAWN BY	AMENDED BY	CHECKED	
PM	PM	AK	

DRAWING NO & REVISION

12308_A_30_04 - D1

The Quadrangle,
 180 Wardour Street,
 London W1F 8FY
 T +44 (0)20 7287 1153
 F +44 (0)20 7287 3675
 www.sprunt.net

sprunt.