

- NOTES
1. IT IS RECOMMENDED THAT NO WORK IS CARRIED OUT UNTIL BUILDING REGULATIONS APPROVAL HAS BEEN OBTAINED.

2. IT IS ESSENTIAL THAT TZG ARE NOTIFIED OF ANY DISCREPANCIES OR SUBSEQUENT CHANGES PRIOR TO THEM BEING IMPLEMENTED.

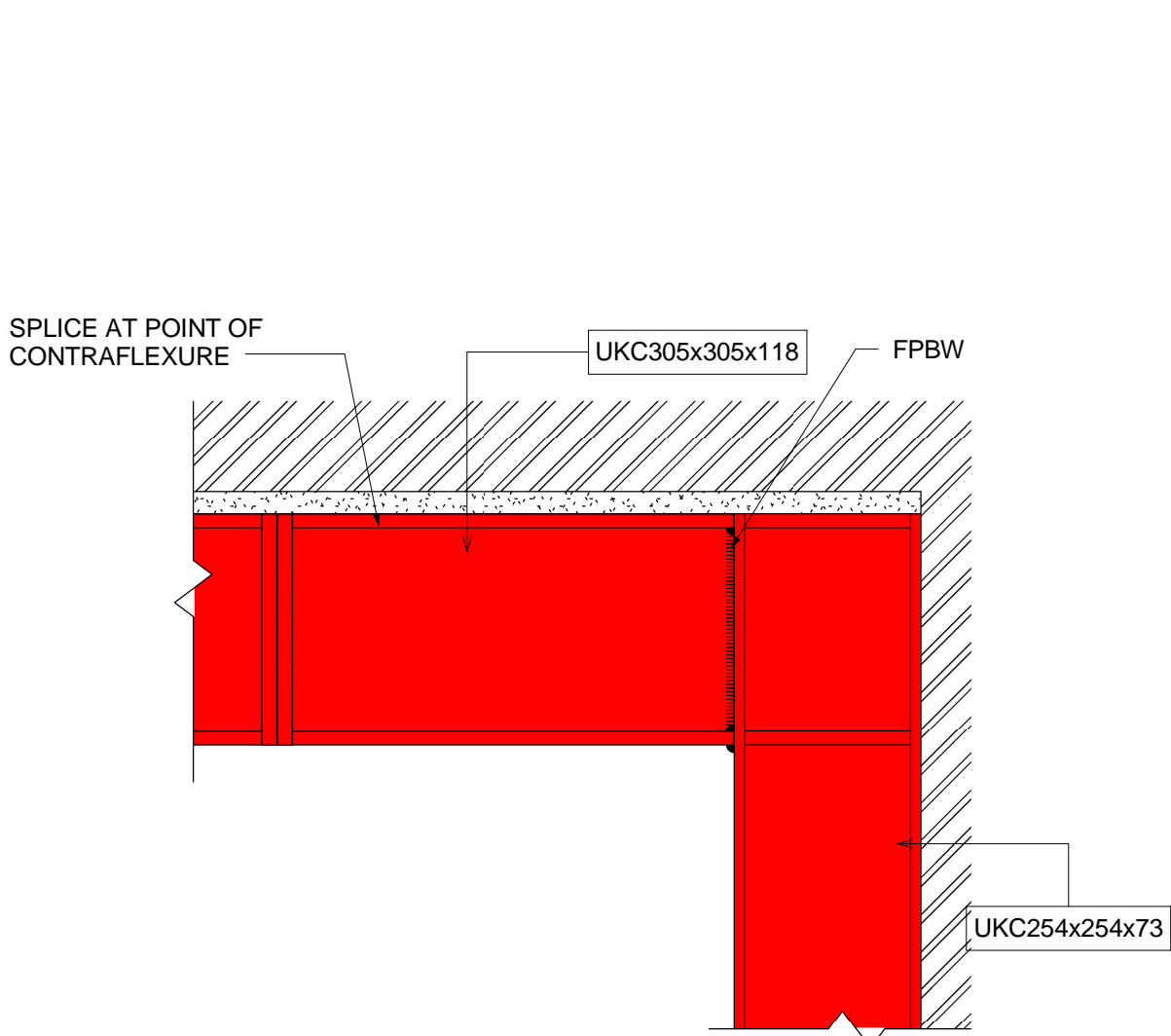
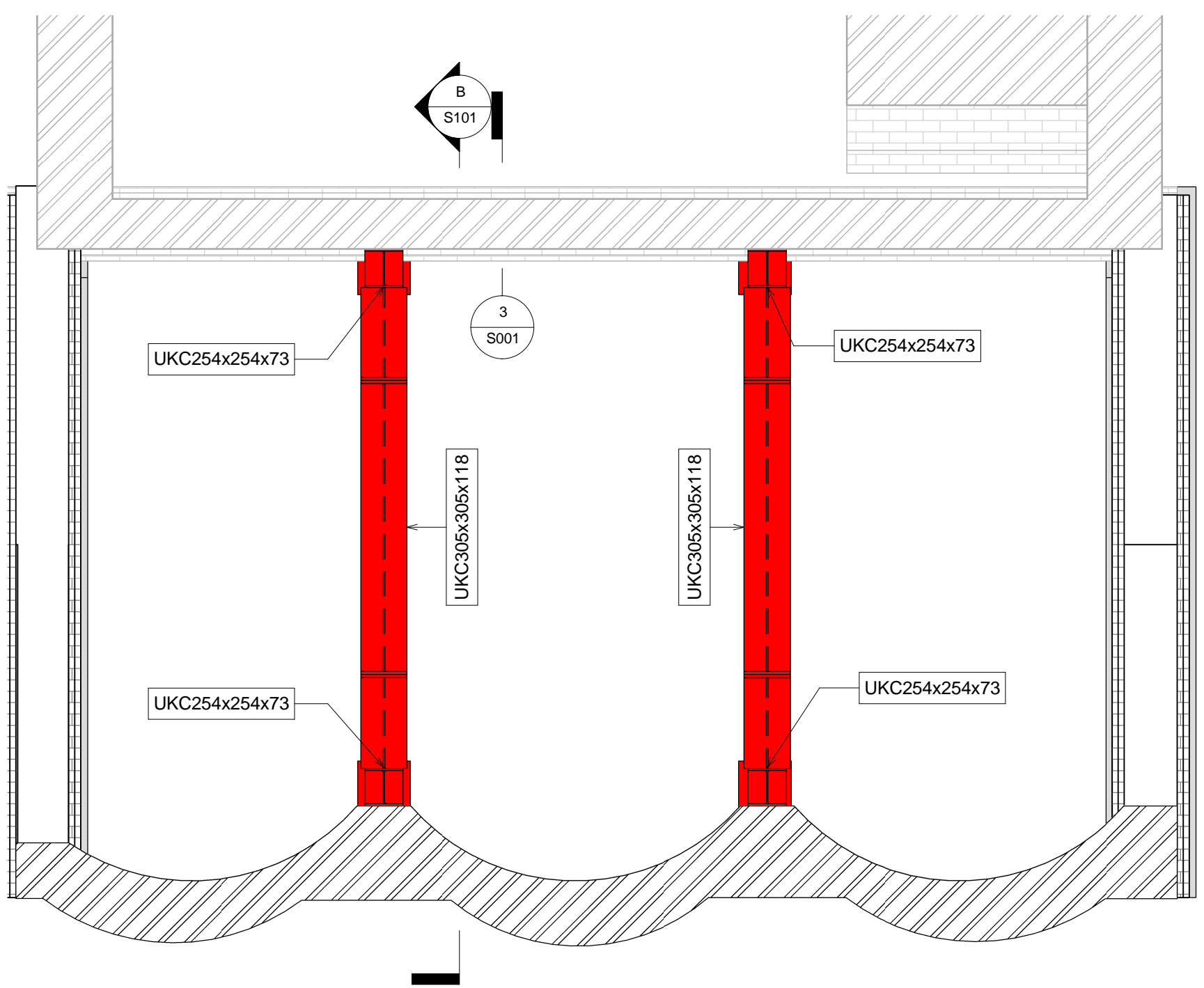
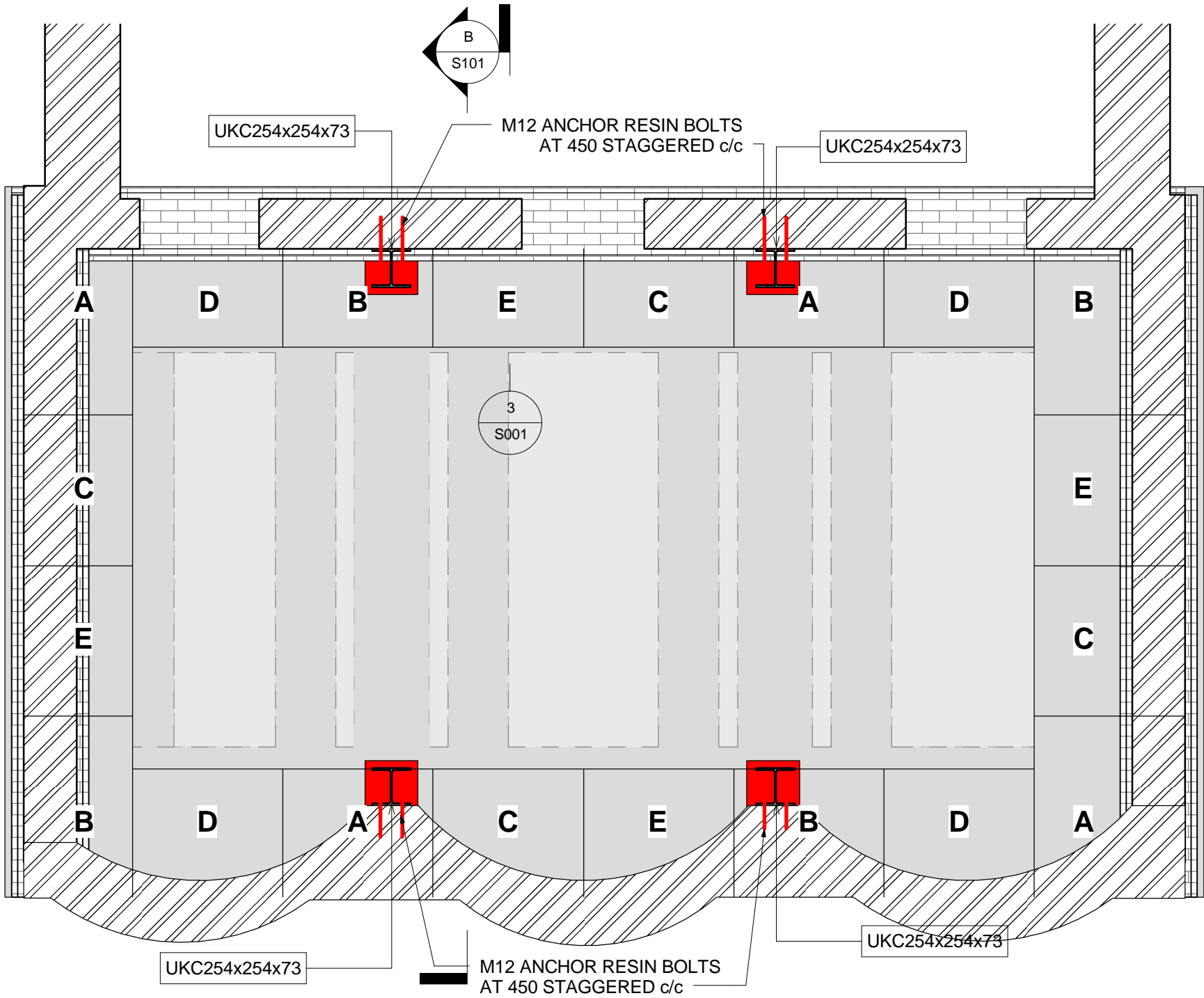
3. DO NOT SCALE FROM THIS DRAWING.

4. THIS DRG IS TO BE READ IN CONJUNCTION WITH THE SPECIFICATION AND ARCHITECTS DRAWINGS.

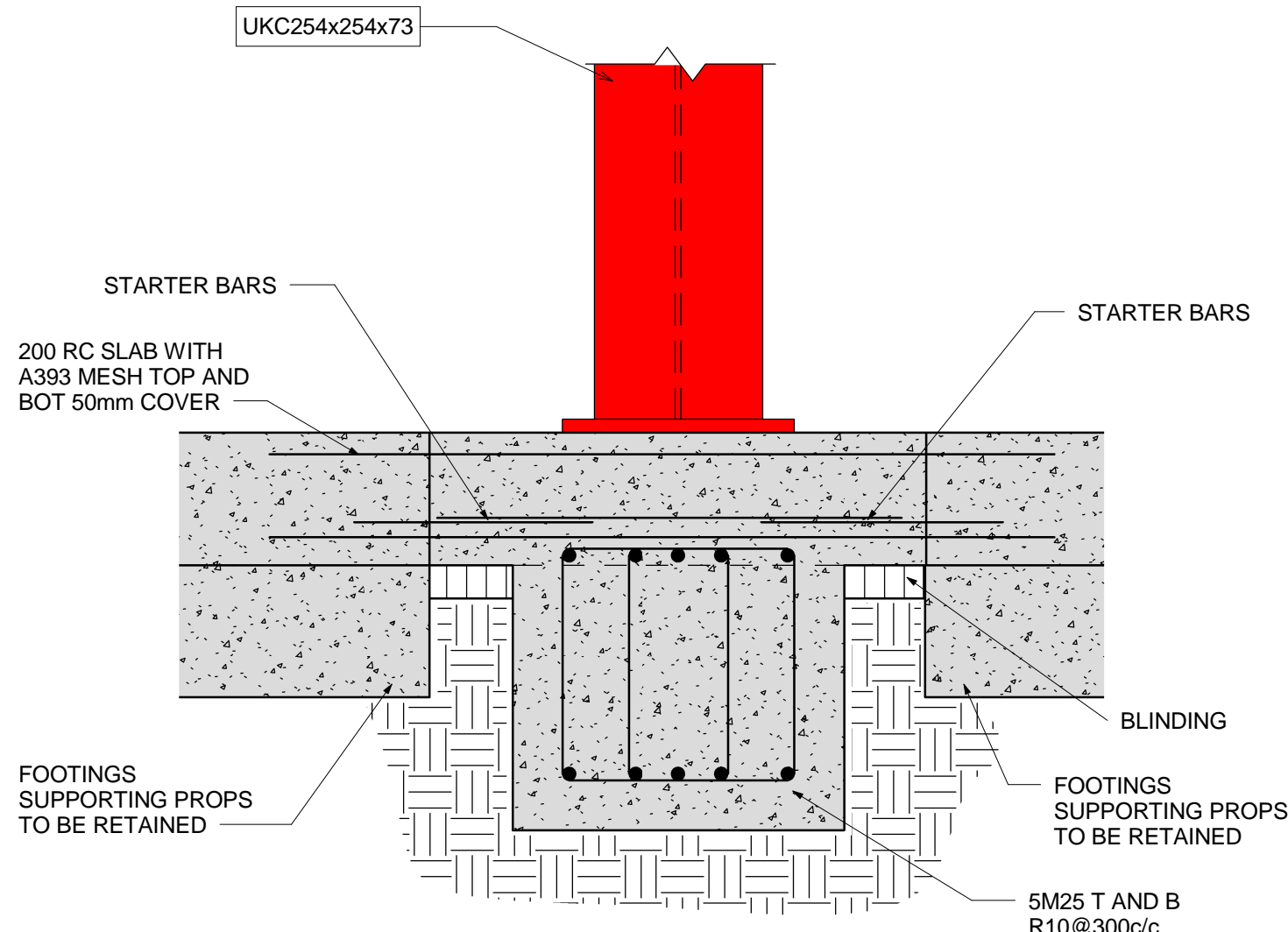
5. ALL DIMENSIONS ARE IN MILLIMETRES UNLESS OTHERWISE STATED.

6. A CONTRACTOR USED TO WORKING WITH THE MATERIALS SHOWN ON THIS DRAWING SHOULD FIND NO UNEXPECTED HAZARDS. ANY ADDITIONAL RISKS ARE NOTED ON THE DRAWING.

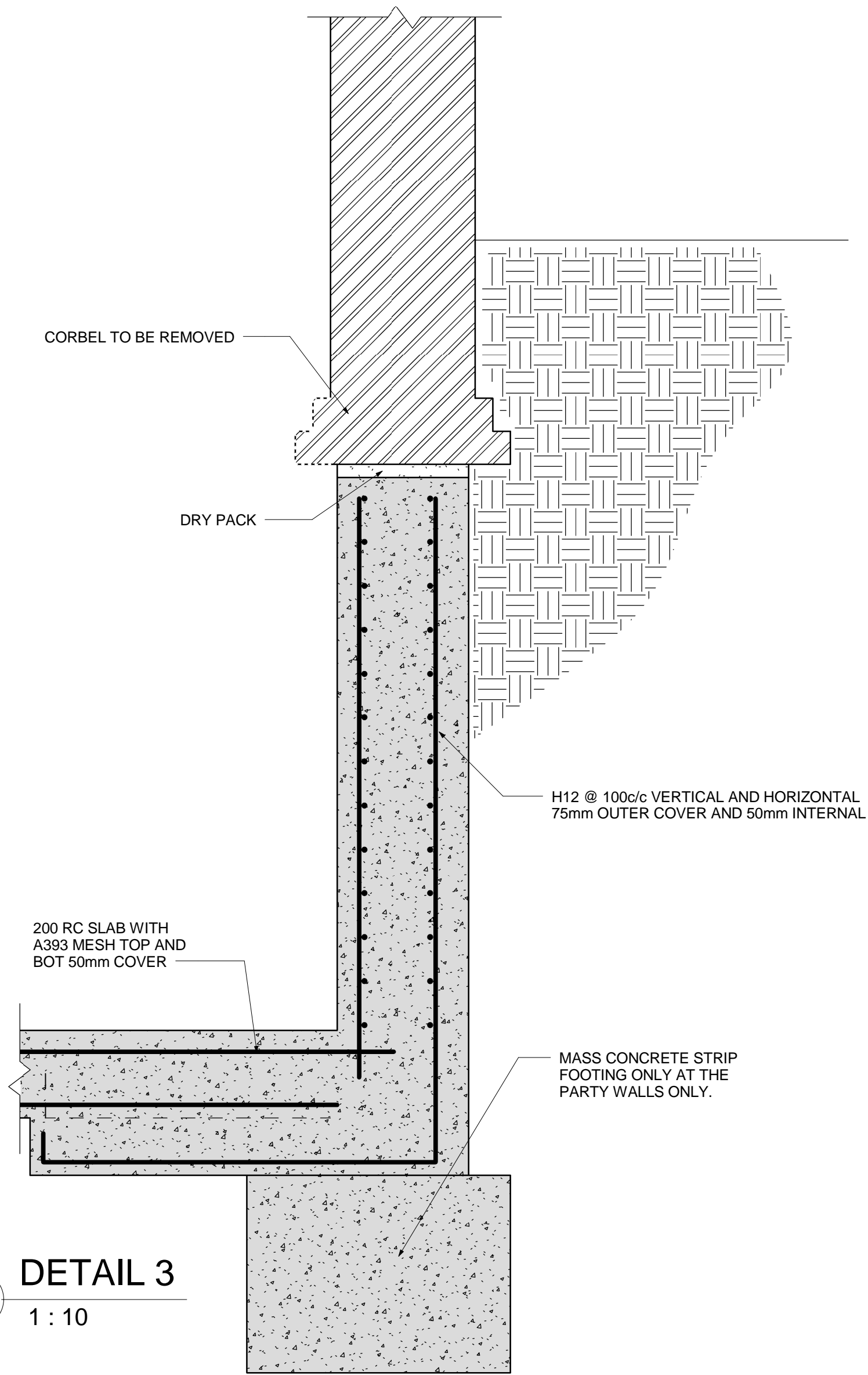
ALL STEEL BEAMS AND COLUMNS  
TO BE GALVANISED STEEL



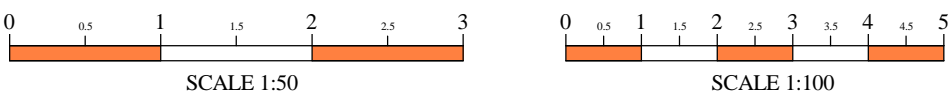
1  
1 : 10  
DETAIL 1



2  
1 : 10  
DETAIL 2



3  
1 : 10  
DETAIL 3



PRELIMINARY

Original size A1

REV.	DATE	DESCRIPTION
A	03.12.14	GENERAL AMENDMENTS
CLIENT		
CORDEIRO PERSAUD		
CONTRACT		
35 CHESTER TERRACE		
TITLE		
PLANS AND DETAILS		
TZG PARTNERSHIP ENGINEERING CONSULTANTS Orchard House 114-118 Cherry Orchard Road Croydon CR0 6BA T: +44 (0)20 8881 2137 F: +44 (0)20 8667 1328 E: admin@tzgpartnership.com W: www.tzgpartnership.com		
SCALE	AS SHOWN	DRAWN SGA
CONTRACT No.	5246	DRG. No. S001
DATE	11/2014	REVISION A