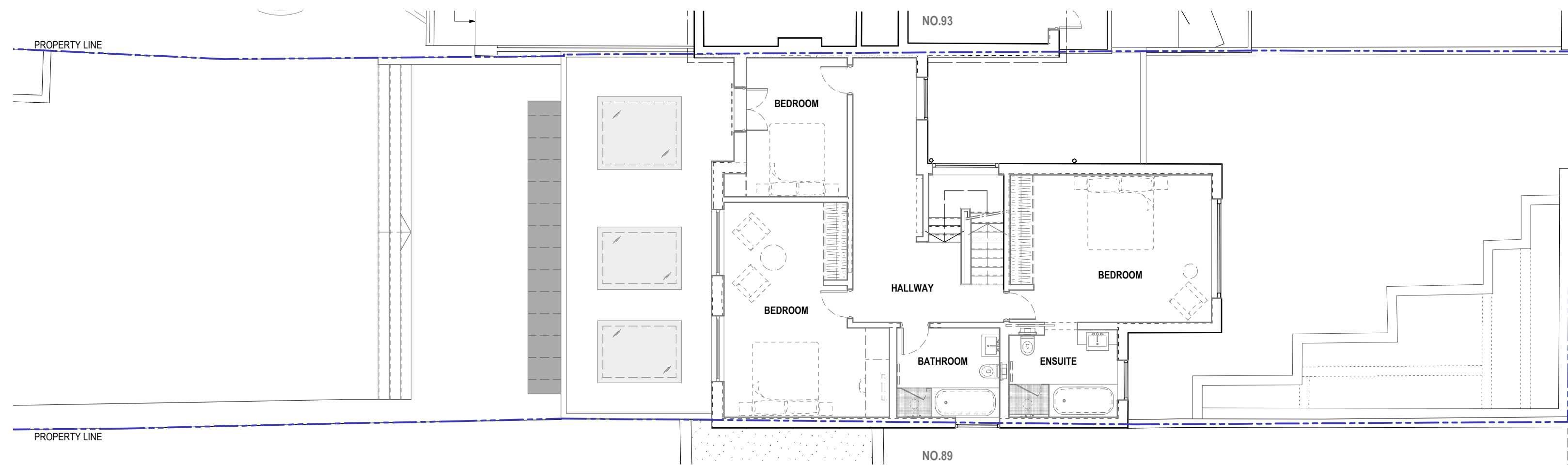
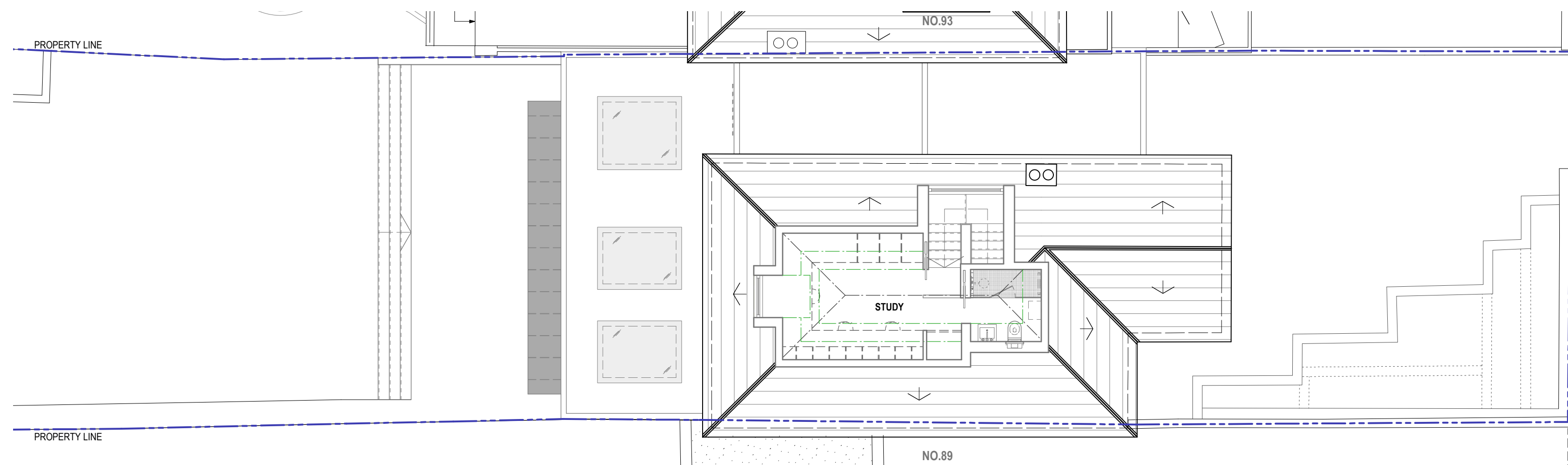


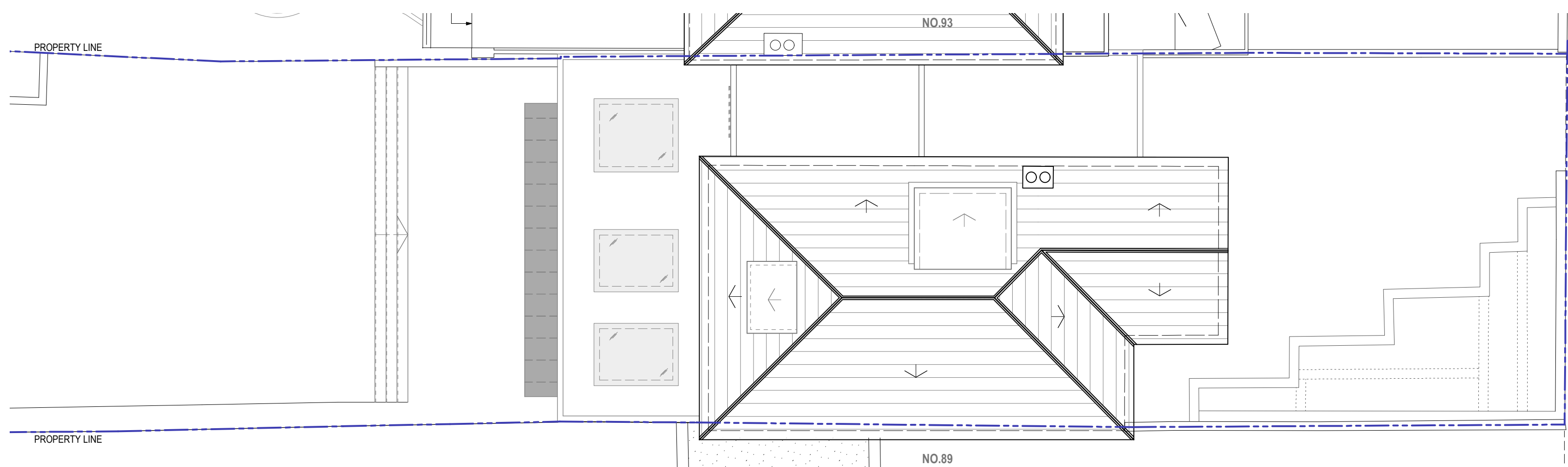
Approved Ground Floor Plan - Ref. 2013/4512/P
scale 1:100



Approved First Floor Plan - Ref. 2013/4512/P
scale 1:100



Approved Second Floor Plan - Ref. 2013/4512/P
scale 1:100



Approved Roof Plan - Ref. 2013/4512/P
scale 1:100

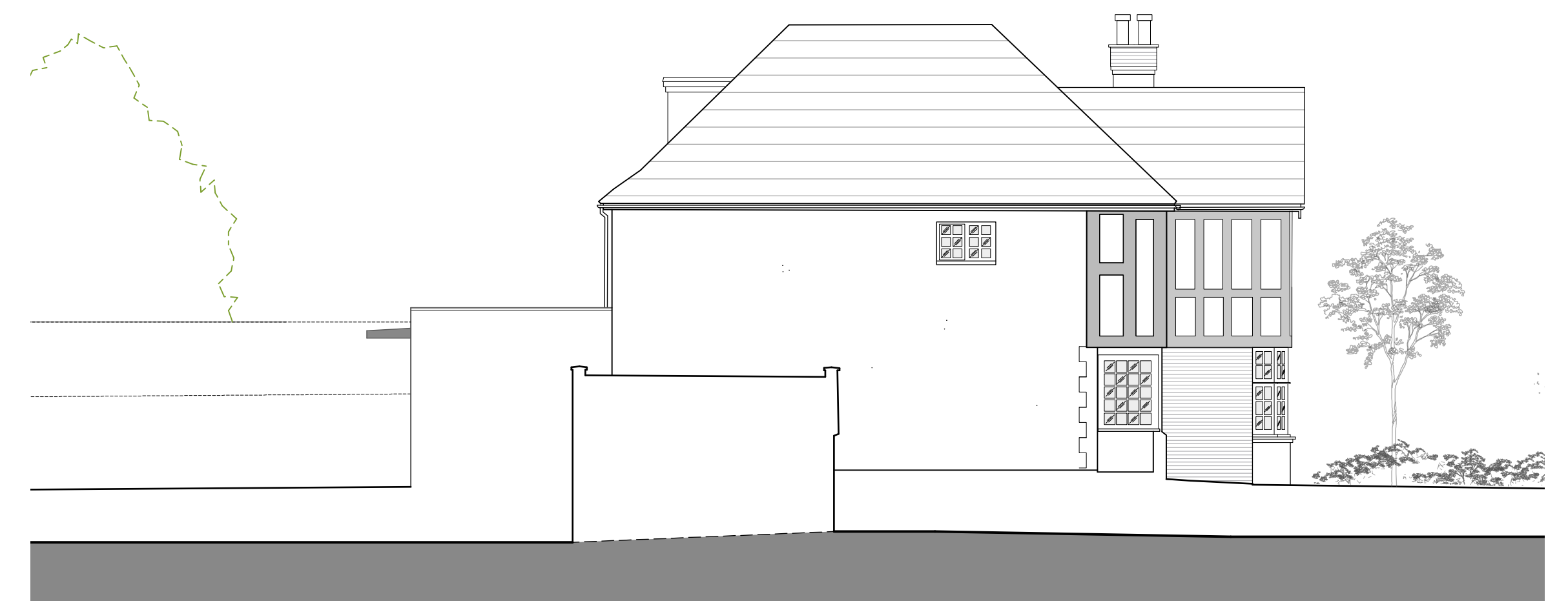


Approved North West Elevation - Ref. 2013/4512/P
scale 1:100



Approved Rear Elevation - Ref. 2013/4512/P
scale 1:100

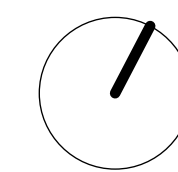
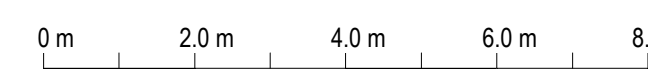
Approved Front Elevation - Ref. 2013/4512/P
scale 1:100

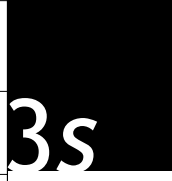


Approved South East Elevation - Ref. 2013/4512/P
scale 1:100

Previously Approved Planning
Application with **REF: 2013/4512/P**

Planning Application



Rev:	Date:	Description:	Project:	 architects and designers
-	2014 12 11	Issued for Amendments to approved Planning Application	91 Hillway, Highgate N6 6AB, London	
			Dwg no:	1301 / PL.02
			Drawing:	Approved Planning Application Drawings Ref. 2013/4512/P
<small>NOTES: Do not scale from this drawing. All dimensions in millimeters. All dimensions to be checked on site. All omissions and discrepancies to be reported to the architect immediately. This drawing is © 3s Architects and Designers. Use of these drawings must be authorised by 3s.</small>			Date:	June 2013
			Scale:	1:100 @ A1
			C	D
			NW	NW
			Rev:	-
			T +44 (0)20 8332 99 -66 F -91 W www.3s-ad.com E info@3s-ad.com 17A Princes Road, Richmond upon Thames, Surrey TW10 6DQ	