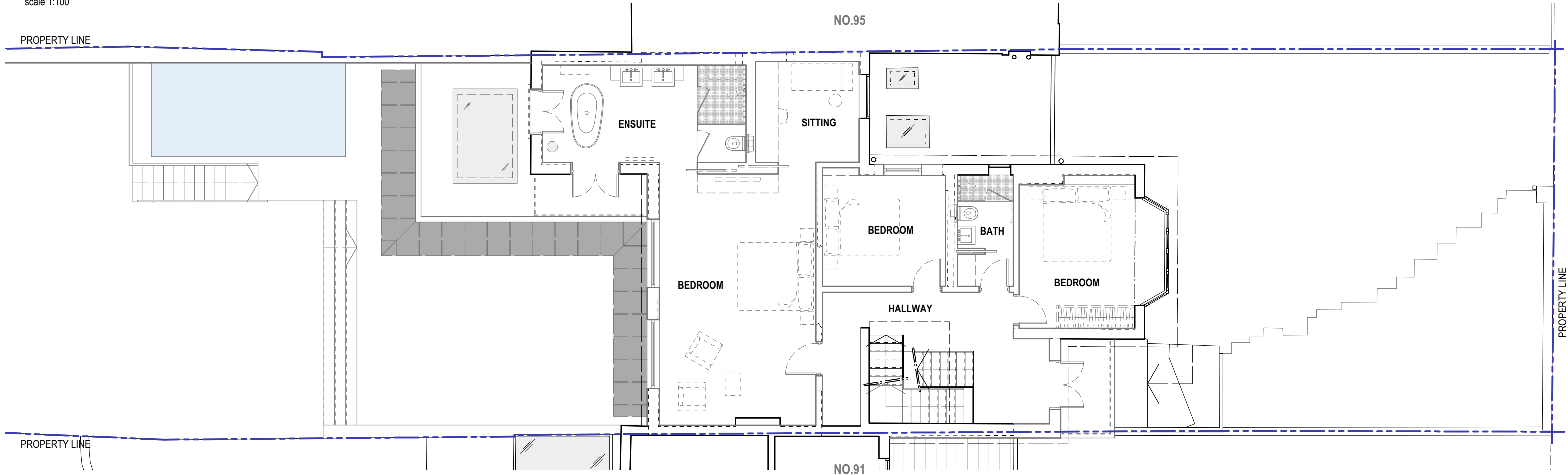
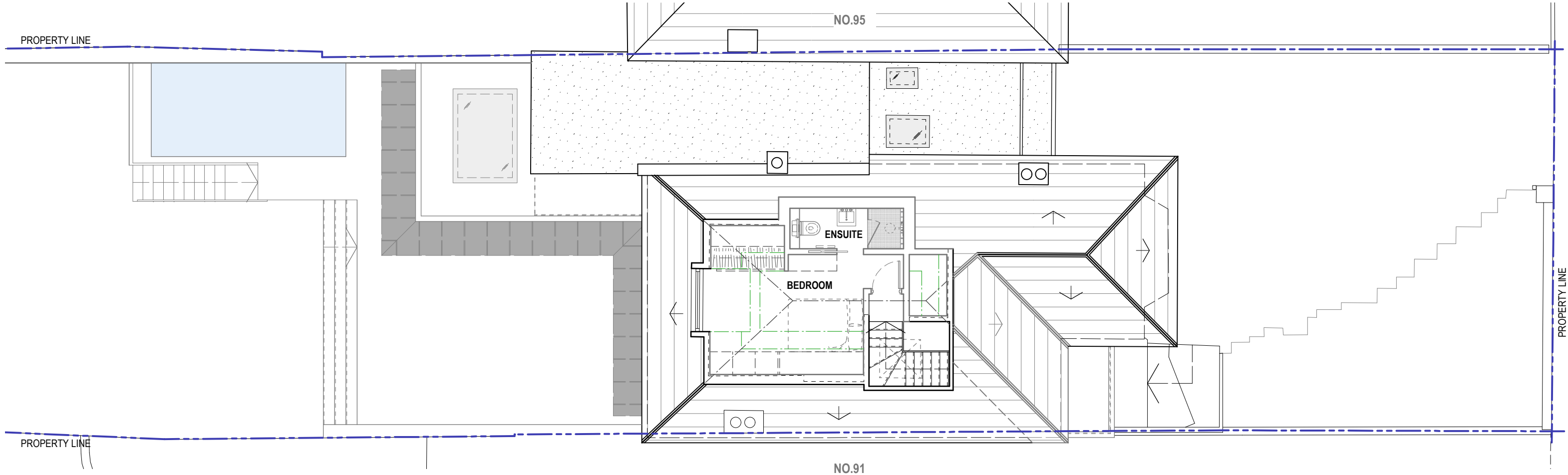


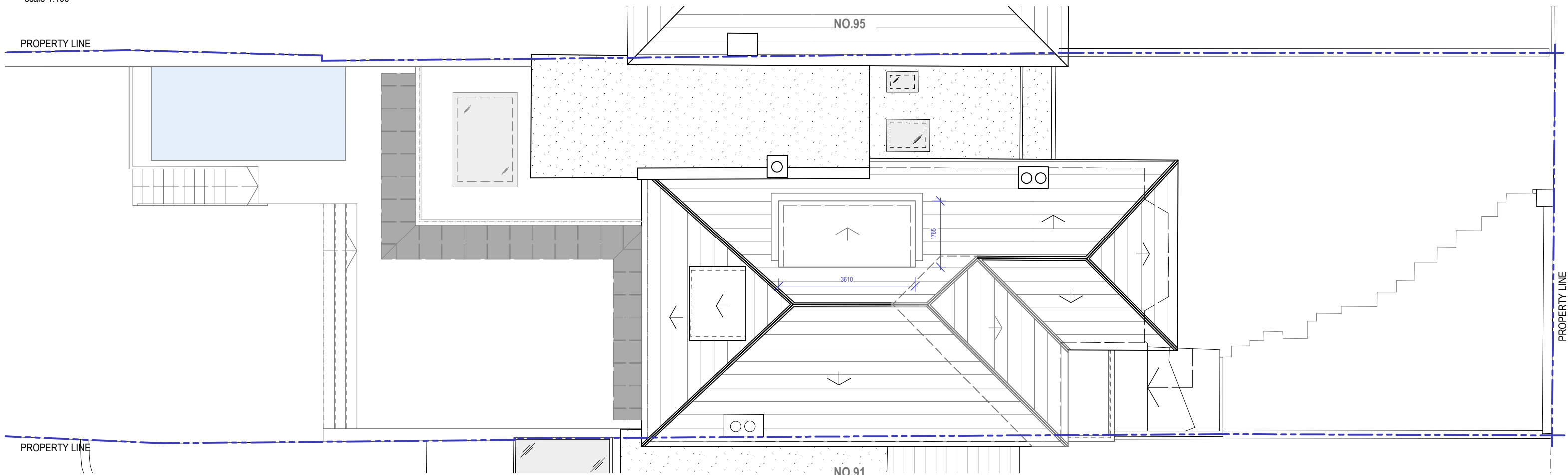
Approved Ground Floor Plan - Ref. 2013/6887/P
scale 1:100



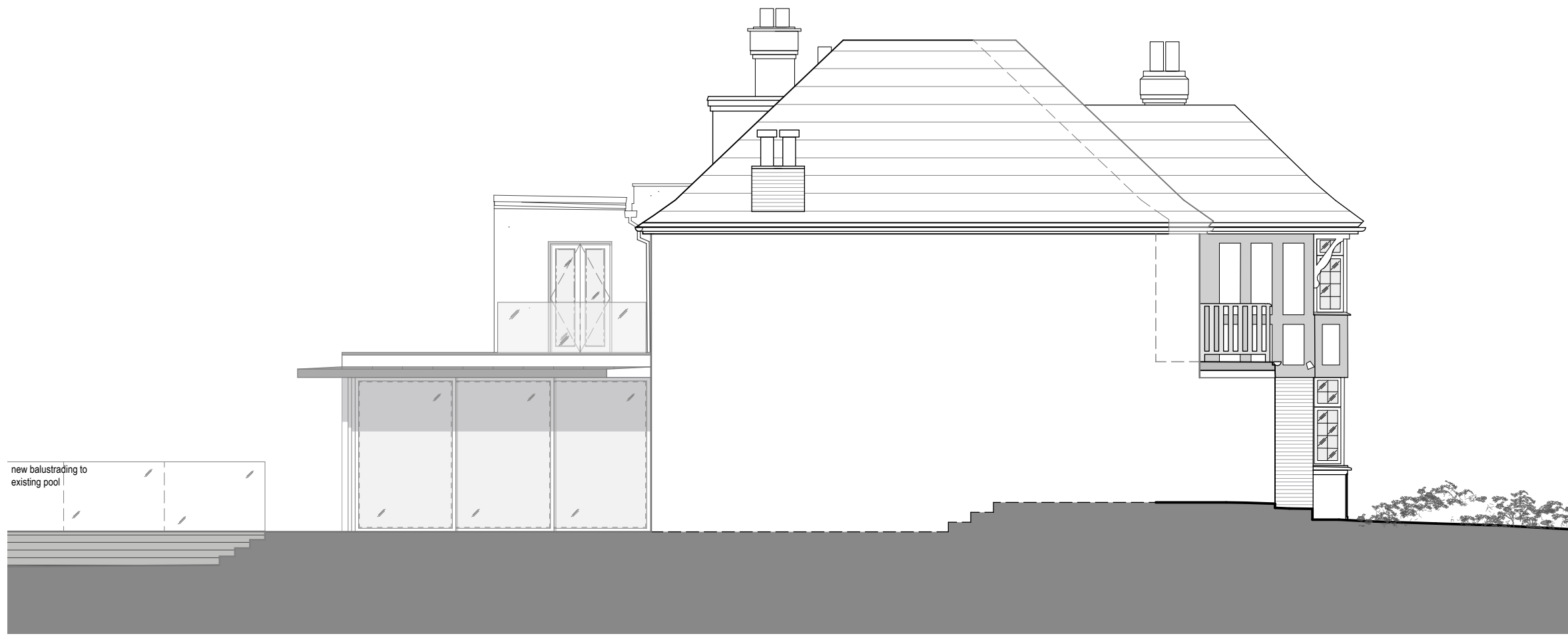
Approved First Floor Plan - Ref. 2013/6887/P
scale 1:100



Approved Second Floor Plan - Ref. 2013/6887/P
scale 1:100



Approved Roof Plan - Ref. 2013/6887/P
scale 1:100



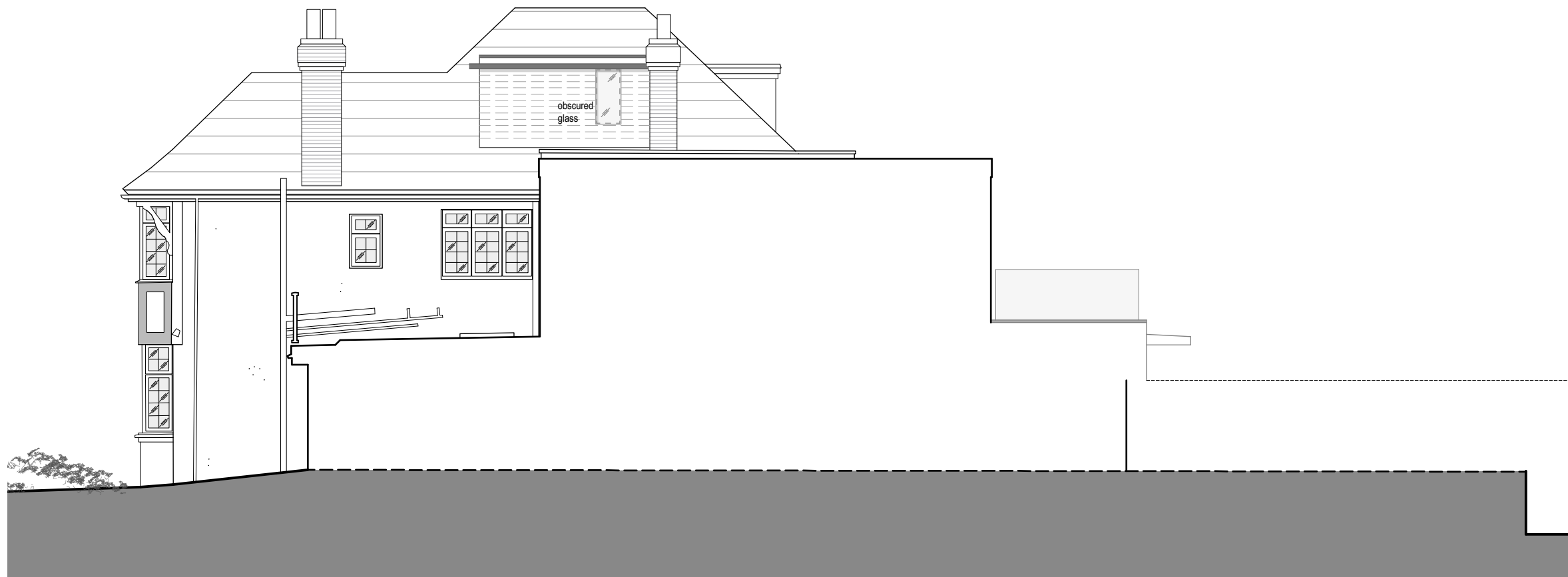
Approved South East Elevation - Ref. 2013/6887/P
scale 1:100



Approved Rear Elevation - Ref. 2013/6887/P
scale 1:100

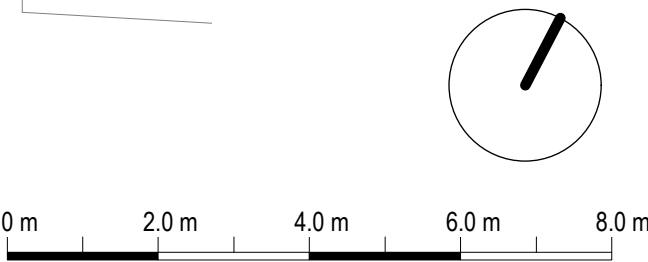


Approved Front Elevation - Ref. 2013/6887/P
scale 1:100



Approved North West Elevation - Ref. 2013/6887/P
scale 1:100

Previously Approved Planning
Application **REF: 2013/6887/P**
Planning Application



Rev: 2	Date: 2014 12 11	Description: Issued for Amendments to approved Planning Application	Project: 93 Hillway, N6 6AB Highgate, London				3s architects and designers
			Dwg no: 1301 / PL.02				
			Drawing: Approved Planning Application Drawing Ref. 2013/6887/P				
NOTES: Do not scale from this drawing. All dimensions in millimeters. All dimensions to be checked on site. All omissions and discrepancies to be reported to the architect immediately. This drawing is © 3s Architects and Designers. Use of these drawings must be authorised by 3s.			Date: October 2013	C NW	D SC	Rev: -	T +44 (0)20 8332 99 -66 F -91 W www.3s-ad.com E info@3s-ad.com 17A Princes Road, Richmond upon Thames, Surrey TW10 6DQ
			Scale: 1:100 @ A1				