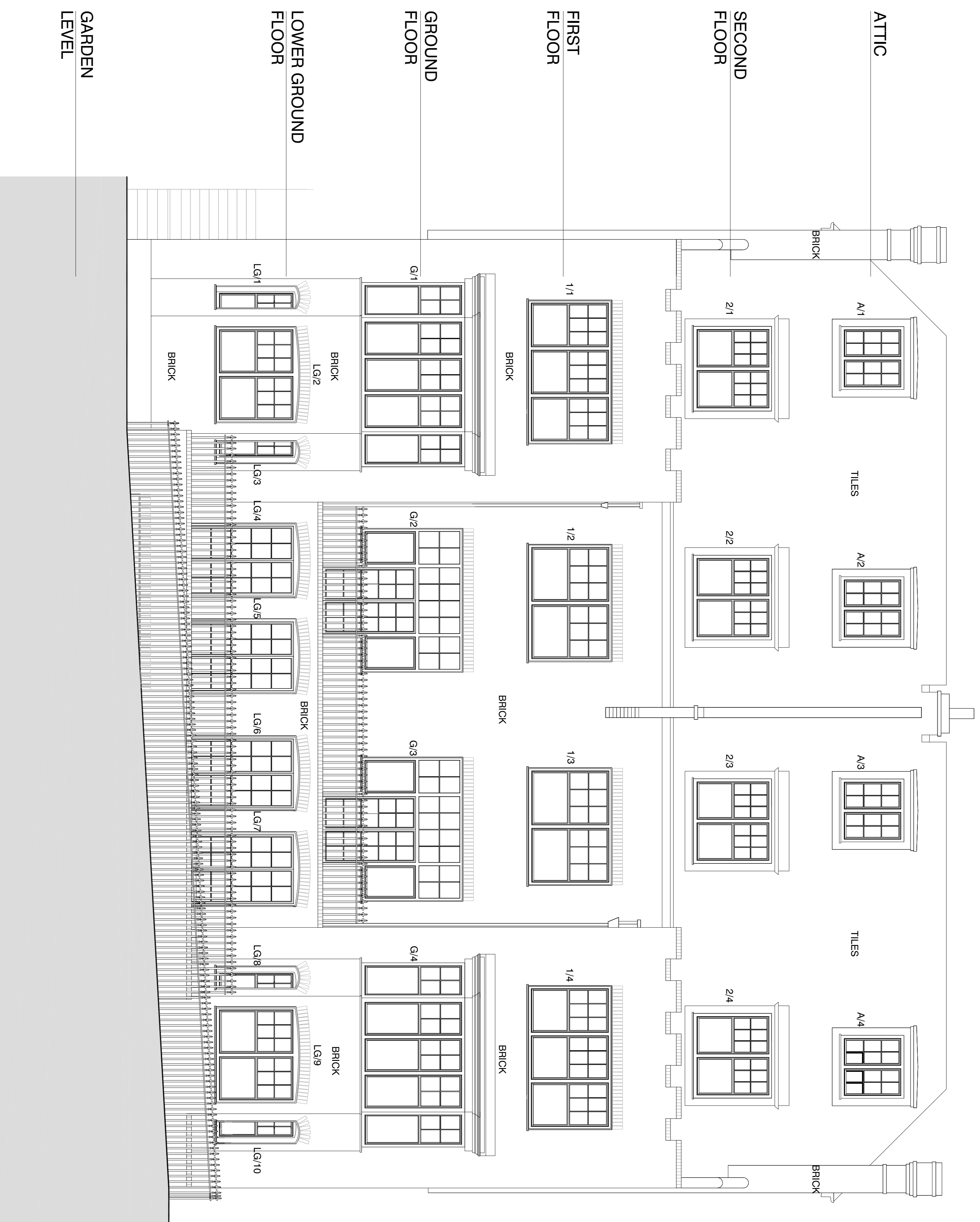


## NOTES

- "As built" drawings are based on:  
(a) CAD files by KYSON, supplied by the client.  
(b) Images of the existing / 'as built'.



client: SHAKIB & Co  
project

**2082 29-30 LYNDHURST ROAD**  
ALTERATIONS TO: FENESTRATION OF FRONT  
AND REAR FACADES, UPPER LEVEL DORMERS  
TO REAR; RETENTION OF ROOF TERRACE,  
RETAINING WALL AND OPENINGS AT LG AND  
GARDEN LEVELS AS BUILT

**D1110 - AS BUILT**

rev:00  
scale: 1:50 at A1  
date: 13/01/2015

**REAR ELEVATION**

**CONSERVATION PD**  
planning + design

a Phoenix Yard  
65-69 Kings Cross Road  
London WC1X 9LW  
t 020 7096 1504  
f 020 7504 1701  
e [elenmakr@conservationpd.com](mailto:elenmakr@conservationpd.com)  
w [www.conservationpd.co.uk](http://www.conservationpd.co.uk)