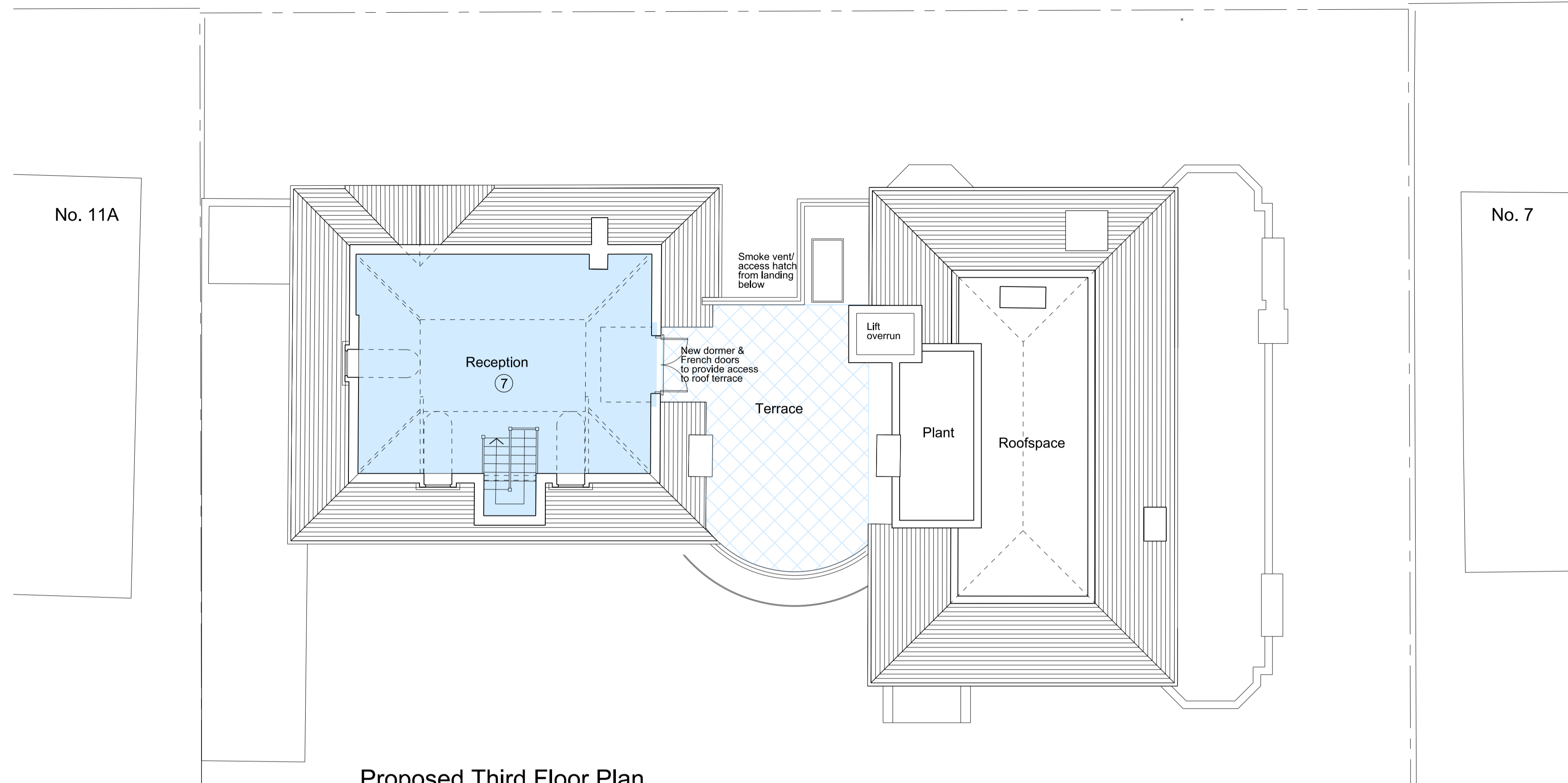
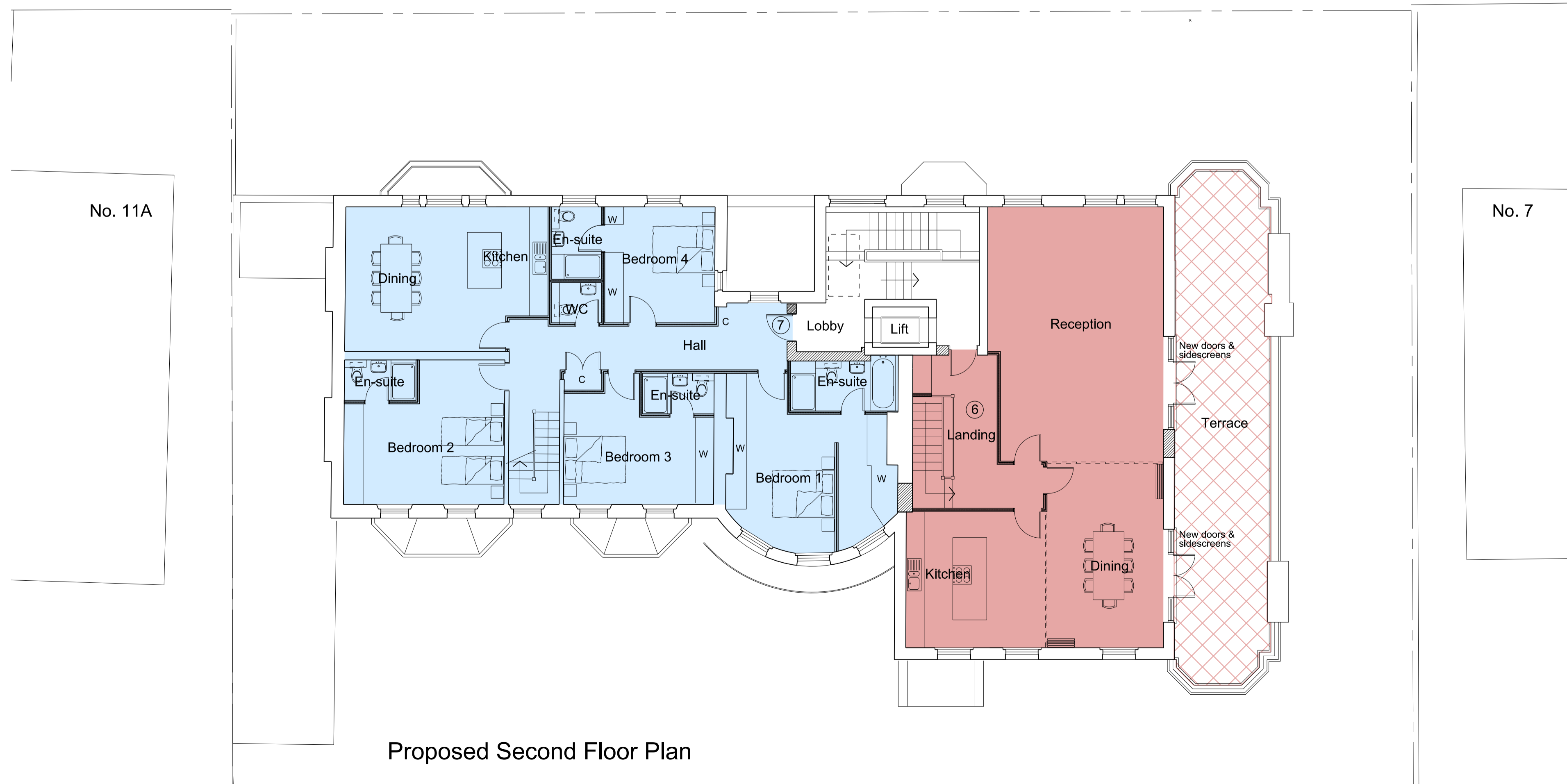


Notes:
 Drawing based on information prepared by PKS Architects
 For gross internal areas refer to separate schedule.



Proposed Third Floor Plan



Proposed Second Floor Plan

Revisions:
 A: (06.11.14) Second Floor terrace access amended. 3rd floor plan updated
 B: (19.12.14) Terrace access, dormers & chimneys amended to Local Authority comments.

Project:
 Proposed Internal Refurbishment of 9 Arkwright Road, London NW3

Title: Proposed Second & Third Floor Plans

Scale: 1:100 @ A1

Date: February 2014

Oakley Hough.

The Barn, Stebbing Farm
 Fishers Green, Stevenage,
 Hertfordshire SG1 2JB

Tel: 01438 745288
 Mobile: 07710 549 270
 e-mail: john@oakleyhough.co.uk

Drawing Number: 893/12B

