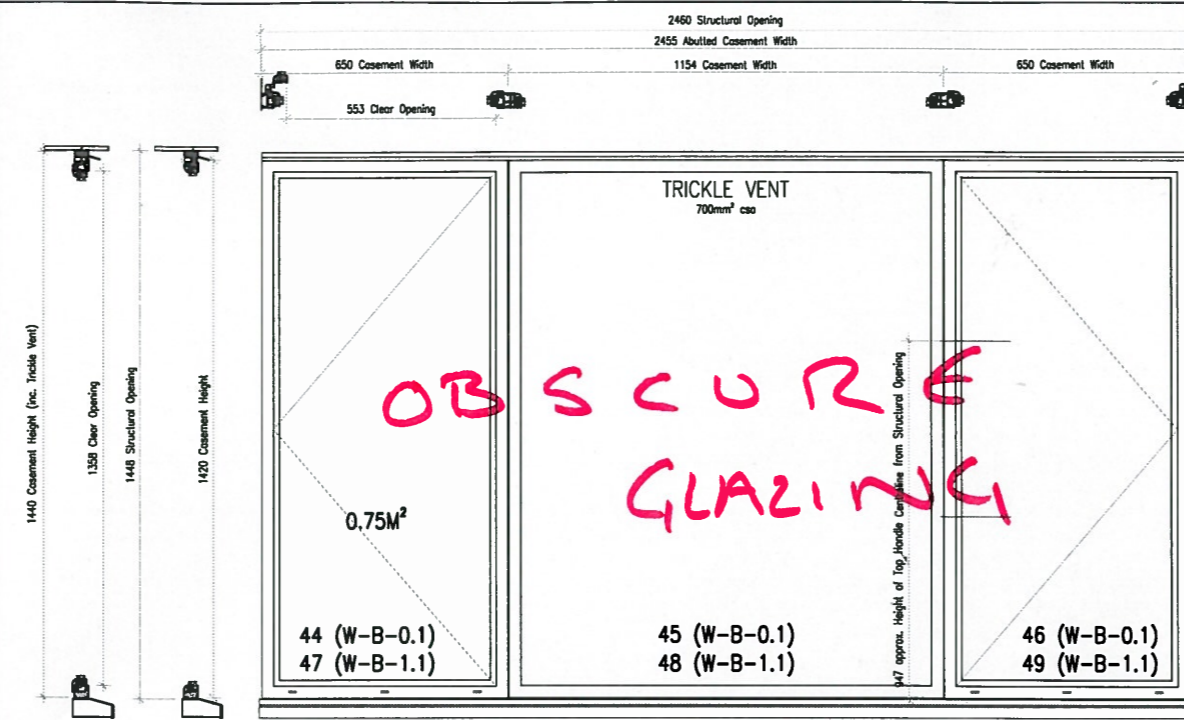
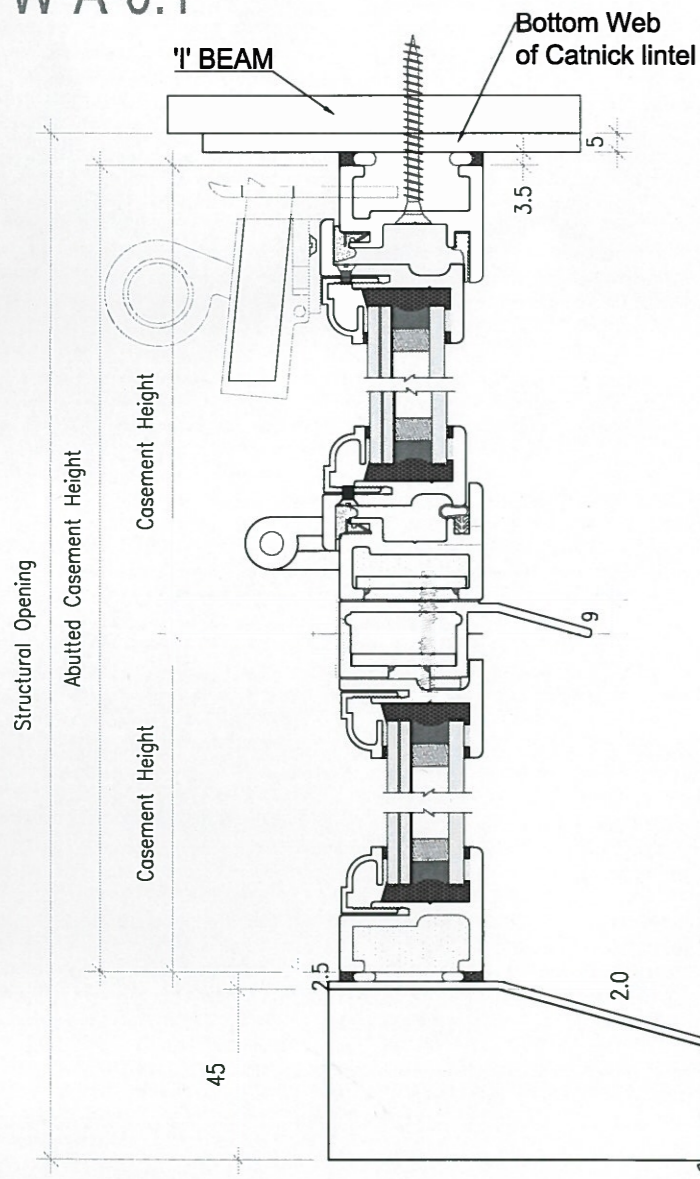
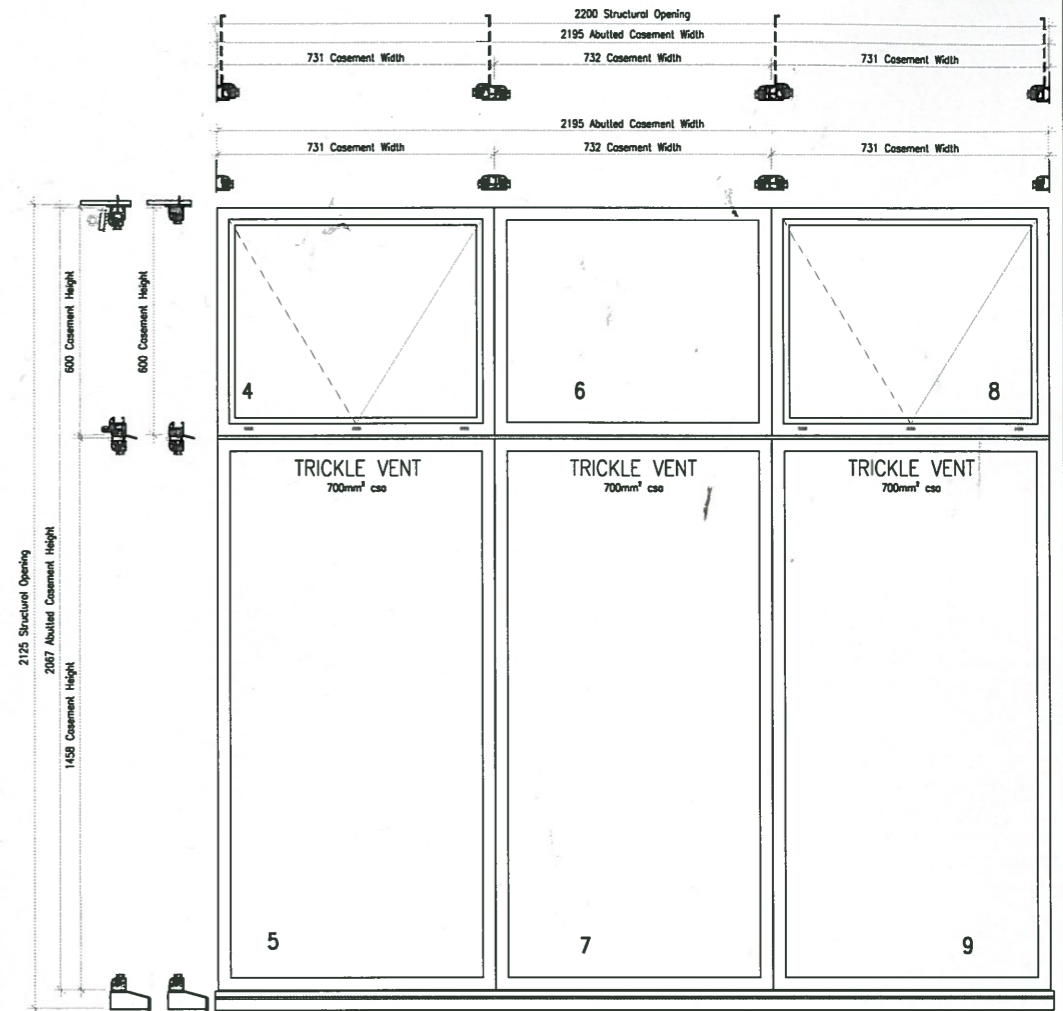
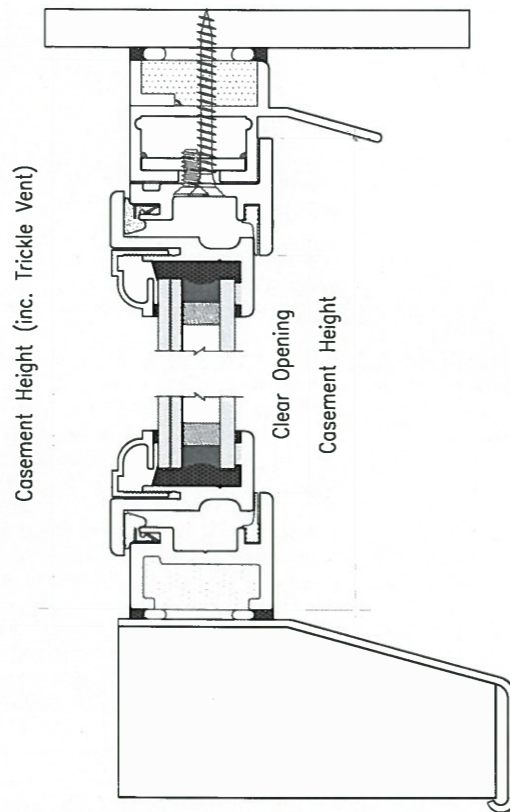


W-A-0.1



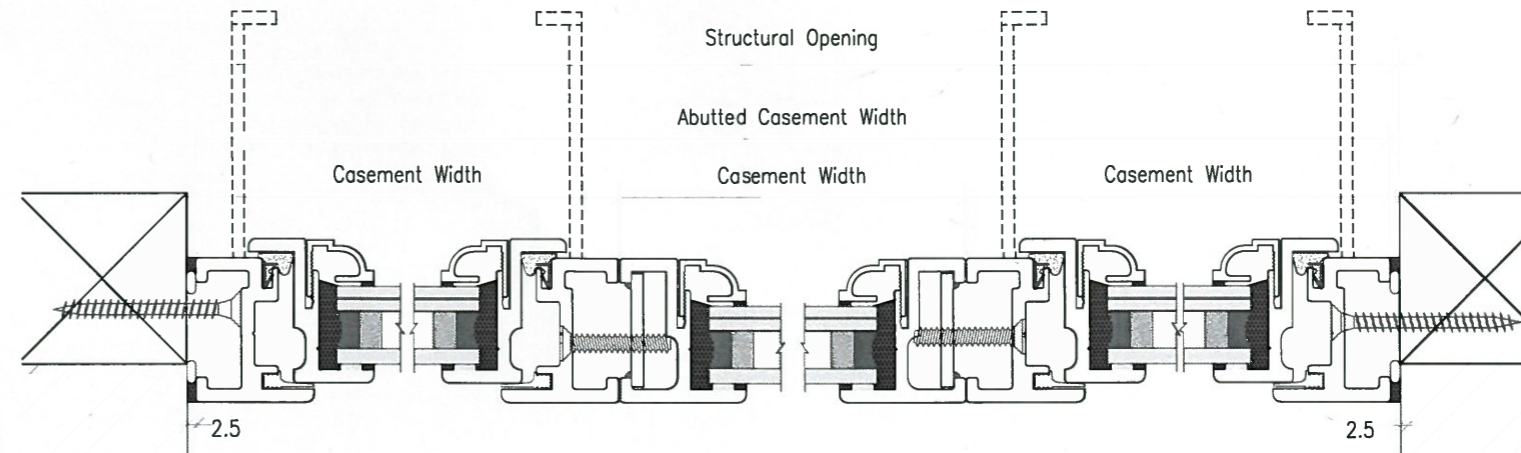
WINDOW VIEWED FROM THE OUTSIDE  
W-B-0.1 Type 13  
W-B-1.1 Type 13

W-B-0.1 &  
W-B-1.1



WINDOW VIEWED FROM THE OUTSIDE  
W-A-0.1 Type 02 Kitchen A 0.7

1:10



1:1

NOTES:  
Trickle Vent extrusion to run through the full length of the head of the casements.

architectural  
BRONZE CASEMENTS  
BY VAL

Prog. No. Q13086 Project Name: 134/136 Gloucester Ave.  
Address: 134 & 136A GLOUCESTER AVENUE LONDON NW1

NOTES  
COPYRIGHT RESERVED 2008  
THIS DRAWING, ITS DESIGN AND ITS COMPONENTS REMAIN THE PROPERTY OF AND MAY BE REPRODUCED IN ANY WAY WITHOUT PERMISSION

SPECIFICATION

General	Timber	Bronze	Paint	Glass	Locking Hardware	Hinges	Abutment	Ironmongery	Other
Fixed & Inward Opening Advanced Bronze Casements with Trickle Vents	N/A	CW720R	N/A	4mm Clear Tough/6.4mm Clear SLE Laminate	N/A	Standard Advanced Casement Hinges	Standard Equal Leg on W-B-0.1 & 1.1	Standard Fanlight Catch to casements 4 & 8	Trickle Vent Extrusion to run across the full width of the head on W-B-0.1 & 1.1
		Standard Advanced Inward Profile		Krypton 10mm Cavity		Antiqued Bronze Finish	Standard Equal Leg to Verticals on W-A-0.1	Stamford Handle to Casements 44, 46, 47 & 49	Trickle Vent Extrusion to run across the full width of the Transom on W-A-0.1
		Head section 'Front' Legs milled to accommodate Trickle Vent Extrusion		10mm Sightline			Trickle Vent to Horizontal on W-A-0.1	Plain Backplate to Casements 44, 46, 47 & 49	Bronzed Machine Screws & Nuts required
		Antiqued Bronze Finish		Black Warm Edge Spacer				Standard Venting Catch Plate to Casements 44, 46, 47 & 49	
								Antiqued Bronze Finish	

Title: Windows W-A-0.1, W-B-0.1 & W-B-1.1  
Overview

Scale: 1:10  
Paper Size: A1  
Design/Agreed By: R Vaughtan  
Checked By: R Vaughtan  
Drawing No: GLOUS/13086/007  
Revisors: [ ]