

© COPYRIGHT
The copyright in this drawing is vested in Sheppard Robson and no license or assignment of any kind has been, or is, granted to any third party whether by provision of copies or originals or otherwise unless agreed in writing.

DO NOT SCALE FROM THIS DRAWING
The contractor shall check and verify all dimensions on site and report discrepancies in writing to Sheppard Robson before proceeding work.

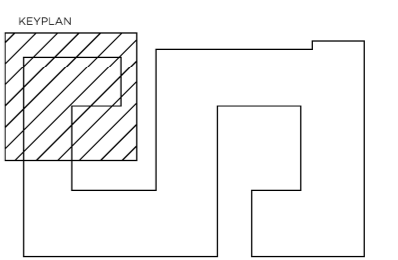
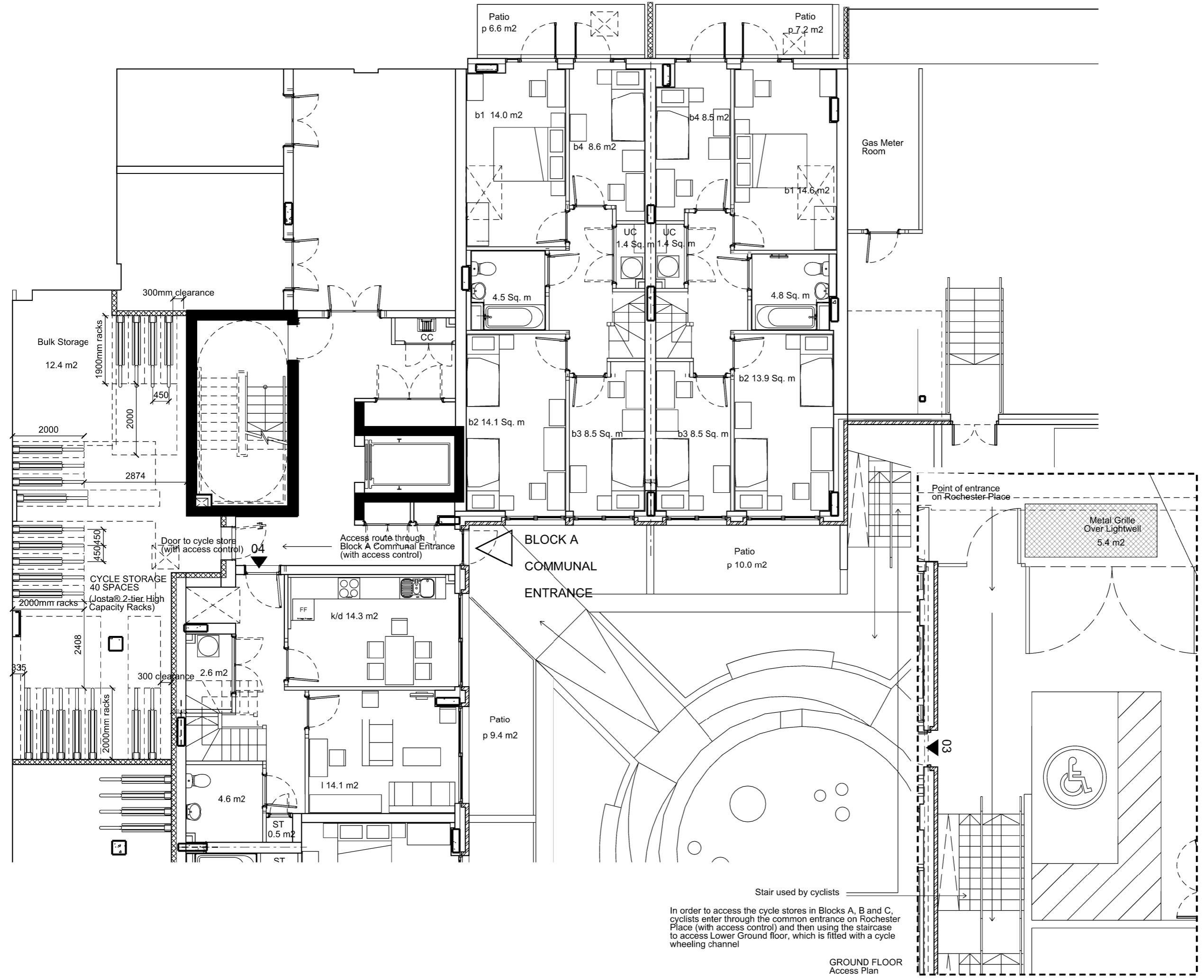
FOR ELECTRONIC DATA ISSUE
Electronic data / drawings are issued as "read only" and should not be interrogated for measurement. All dimensions and levels should read, only from those values stated in text, on the drawing.

AREA MEASUREMENT
The areas are approximate and can only be verified by a detailed dimensional survey of the completed building. Any decisions to be made on the basis of these predictions, whether as to project viability, pre-letting, lease agreements or the like, should include due allowance for the increases and decreases inherent in the design development and building processes. Figures relate to the likely areas of the building at the current state of the design and using the Gross External Area (GEA) / Gross Internal Area (GIA) / Nett Internal Area (NIA) method of measurement from the Code of Measuring Practice, 6th Edition (RICS Code of Practice). All areas are subject to Town Planning and Conservation Area Consent, and detailed Rights to Light analysis.

NOTES



REV.	DATE	AMENDMENT
A	12/01/2015	Drawing updated in line with Planning Condition 6



CLIENT

SHEPPARD ROBSON

77 Parkway Camden Town London NW1 7PU
T: +44 (0)20 7504 1700 E: london@sheppardrobson.com

PROJECT
79 CAMDEN ROAD

SCALE@A3 DATE 24.10.2014 MS ORIGINATOR TK CHECKED DB AUTHORISED

TITLE
**BLOCK A CYCLE STORE
LOWER GROUND FLOOR AND ACCESS PLAN**

STATUS
INFORMATION

DRAWING NO.
4998-sk -525

REV.
A

Stair used by cyclists

In order to access the cycle stores in Blocks A, B and C, cyclists enter through the common entrance on Rochester Place (with access control) and then using the staircase to access Lower Ground floor, which is fitted with a cycle wheeling channel

**GROUND FLOOR
Access Plan**