

Notes:



- 1 EXISTING BRICKWORK RETAINED AND CLEANED C40
- 2 NEW STONE CLADDING H51115
- 3 NEW TERRACOTTA FNS H11130A
- 4 NEW METAL VERTICAL REVEL H43110
- 5 NEW METAL CLADDING H43110
- 6 NEW SIGNAGE (SHOWN INDICATIVE SEE GENERAL NOTE)
- 7 NEW GLASS FACADE H11115A, H11115B
- 8 NEW CLEAR GLAZED BALUSTRADE L30550A WITH SUS HANGERS L30730A
- 9 NEW CLEAR GLASS AUTOMATIC SLIDING DOORS L20480A
- 10 NEW DORMER WINDOWS L10317
- 11 NEW METAL LOUVRES L10450B, L10450D
- 12 NEW METAL ROOF H74111
- 13 NEW TERRACE DECKING Q55110A
- 14 NEW INVERTED BROWN ROOF Q37130
- 15 NEW DOUBLE GLAZED TIMBER SASH REPLACEMENT WINDOWS L10210A
- 16 NEW CAPPED GLASS FACADE H11111, H11111A
- 17 NEW MIRROR FINISH METAL PANNELLING H43110 TO SHADOW GAP REVEAL
- 18 NEW GLAZED SINGLE DOOR H11135A
- 19 NEW ACOUSTIC LOUVRES TO PLANT ENCLOSURE L10550C
- 20 NEW ALUMINIUM WINDOW L10330A
- 21 EXISTING STONE DETAILS RETAINED AND CLEANED C40
- 22 EXISTING WINDOWS REPLACED WITH LOUVRES L10330D
- 23 NEW GLAZED ENTRANCE DOUBLE DOORS H11135B
- 24 NEW METAL PORTAL FRAME Z11111, Z11 FOR FPC FINISH
- 25 NEW FEATURE LIGHT REFER TO LIGHTING CONSULTANTS SPECIFICATIONS
- 26 NEW DECORATIVE METAL ELEMENTS Z11116, Z11 FOR FPC FINISH
- 27 RETAIL SIGNAGE ZONE (SEE GENERAL NOTE)
- 28 DROP DOWN BALUSTRADE FOR SERVICE ACCESS Q1135A
- 29 NEW METAL SECURITY GATE L20420
- 30 KMTTFC
- 31 NEW PERFORATED METAL EXTRACT PANEL H31122
- 32 NEW CAPLESS FLUSH SLOT WINDOW H11110C
- 33 NEW PAINT FINISH TO EXISTING SHOPFRONTS M80
- 34 NEW SPANDREL PANEL
- 35 NEW INVERTED PAVED ROOF J31130A
- 36 NEW SOLID METAL DOOR L20480C
- 37 NEW BRICK TO MATCH EXISTING F10110
- 38 NEW TRANSLUCENT GLAZING H11111
- 39 NEW CAPPED GLASS FACADE H11111A
- 40 NEW STONE CORNICE AND FEATURES TO MATCH EXISTING 10725A, F1075A
- 41 NEW MICRO LOUVRES L10450A
- 42 STRUCTURAL STEEL FRAME SYSTEM G10150
- 43 INSULATION F10
- 44 ROOF ACCESS HATCH
- 45 PULL DOWN LOFT LADDER L30420A
- 46 DRINKING SINKING K10920 (REFER TO FURC SERIES)
- 47 BLOODWORK F10
- 48 SECONDARY STEEL WORK G10152
- 49 NEW ZINC CAPPING H74211
- 50 NEW ZINC CUTTER H74210A
- 51 INSECT MESH H74111
- 52 VCL P10310
- 53 BREATHER MEMBRANE P10320A
- 54 WEEP HOLE F30132
- 55 FULL CAVITY INSULATION F30150
- 56 FIXING TIES F30233
- 57 BRICK SUPPORT SYSTEM F30255
- 58 CAVITY TRAY F30370A
- 59 ROLLER BLIND RESIDENTIAL N10240A BLINDS PART OF TENANT FIT OUT
- 60 MAIL BOX H10260
- 61 SHADOW GAP PRESSING H74111
- 62 NEW GLAZING TO LINK BRIDGE AND RESIDENTIAL ENTRANCE H11110D
- 63 NEW FIRE CURTAIN L20410A
- 64 ROLLER BLIND RESIDENTIAL N10240
- 65 NATURAL STONE COVERING M40115A, M40115B
- 66 SHADOW BOX DETAIL H11110C, H11111A
- 67 CERAMIC FLOOR TILES M40110C
- 68 TIMBER PANNELLING K13105A
- 69 OVERSIZED TERRACOTTA COVER CAP H11111
- 70 PERFORATED METAL H31122
- 71 NEW CAPLESS FLUSH SLOT WINDOW H11110F
- 72 NEW DOUBLE GLAZED TIMBER CASEMENT REPLACEMENT WINDOWS L10210B

GENERAL NOTES:
 - GENERAL BUILDING SIGNAGE SHOWN IS INDICATIVE ONLY
 - RETAIL SIGNAGE ZONE SYSTEM FOR INFORMATION
 - FUTURE SIGNAGE PART OF SEPARATE FUTURE SIGNAGE APPLICATION
 - WINDOW NUMBER SYSTEM:
 W WINDOW FLOOR NUMBER X TYPE DX NUMBER

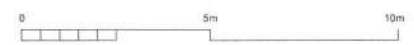
C2	15.05.14	NMA PLANNING ISSUE
C1	27.01.14	CONSTRUCTION ISSUE
T1	16.08.13	TENDER ISSUE
A	05.07.13	STAGE E ISSUE
-	19.04.13	STAGE D ISSUE

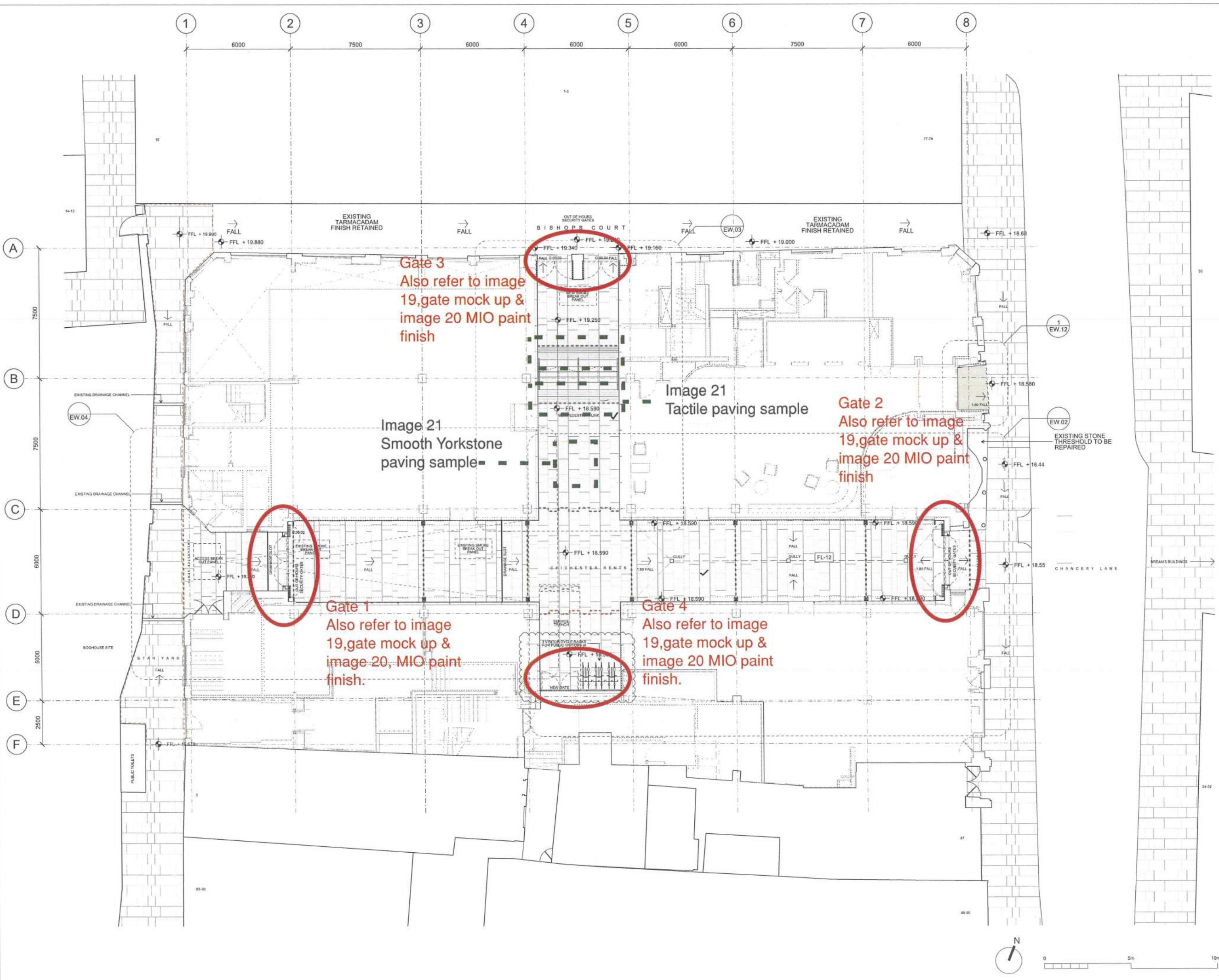
Revision:
 ORMS
 Architecture Design
 1 Pine Street London EC1R 0JH
 T 0207 833 8533 F 0207 837 7575
 E orms@orms.co.uk

Project: 79 - 86 CHANCERY LANE
 Drawing title: PROPOSED EAST ELEVATION

Scale: 1:100 @ A1 1:200 @ A2 Drwg. No. 1966 GE 01
 Date: JANUARY 2013 Rev. C2
 Status: For information For tender For construction

Do not scale. All dimensions to be confirmed on site. Information contained in this drawing is the sole copyright of ORMS Designers & Architects Ltd and is not to be reproduced without permission.





Notes:

FLOOR FINISH TYPES:

- FL-10 EPOXY FLOOR PAINT M60/180A
- FL-11 CONCRETE PAVING SLABS ON PEDESTALS + INVERTED ROOF CONSTRUCTION - J31/370A
- FL-12 FLAGSTONE PAVING (600 AND 300 WIDE X RANDOM LENGTHS) - M40/115B
- FL-13 TIMBER DECKING - Q55/110A
- FL-14 METAL GRATING RAISED FLOOR - REFER TO ENGINEER'S SPECIFICATION
- FL-15 TACTILE PAVING

FOR ALL INTERNAL FLOOR FINISHES REFER TO FL SERIES.

- EXISTING FLAGSTONE PAVING
- EXISTING FLAGSTONE PAVING TO BE REPAIRED, REFER TO SPECIFICATION

----- MOVEMENT JOINTS IN EXTERNAL PAVING TO STRUCTURAL ENGINEERS DETAIL, TYPICALLY LOCATED ON GRID LINES

SPECIFICATION NOTES:

FL-12 - Typically 50mm Marshall's York Stone paving (Scoutmoor) ref to M40/115B. Unless paving is in Zone B ref to Orms detail EW13 (showing 38mm thickness)

F-15 - 50mm Marshall's York Stone hazard tactile paving to match F-12

Paving mortar joint typically 8mm with flow point (cementitious flowable grout) Colour TBC

Paving bedding - Instamarc EPR9 epoxy mortar (minimum depth 10mm) for details refer to EW detail drawings.

Movement joints as shown on EW01 (maximum 10m centres & to perimeter) - to SE detail

Waterproofing to be confirmed by contractor & to lap with curtain walling EPDM

Drainage outlets:

Slot drains
Wade HSC slotted channel to suit 50mm paving & channel body & slot drain to suit services engineer specification. Recess access with 140mm square cover to side outlet locations

Gully drains
Wade gully with 150mm L2901 stainless steel cover. Gully body to Services Engineer specifications.

Recessed Signage to Chichester Rents please refer to Orms EW11

C3	11.11.14	CONSTRUCTION ISSUE
C2	28.10.14	CONSTRUCTION ISSUE
C1	27.01.14	CONSTRUCTION ISSUE
T2	27.08.13	TENDER ISSUE
T1	16.08.13	TENDER ISSUE
-	05.07.13	STAGE E ISSUE

Revision:

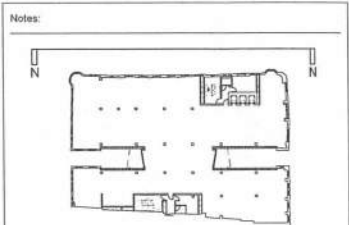
ORMS
Architecture
Design

1 Oliver's Yard, 55-71 City Road, London, EC1Y 1HQ
T 0207 833 8533 F 0207 837 7575
E orms@orms.co.uk

Project 79 - 86 CHANCERY LANE
Drawing title EXTERNAL WORKS GROUND FLOOR PLAN

Scale 1:100 @ A1 / 1:200 @ A3 Drwg. No. 1966 EW 01
Date JUNE 2013 Rev. C3
Status For information For tender For construction

Do not scale. All dimensions to be confirmed on site.
Information contained in this drawing is the sole copyright of ORMS Designers & Architects Ltd and is not to be reproduced without permission.



- Notes:
- EXISTING BRICKWORK RETAINED AND CLEANED C40
 - NEW STONE CLADDING H451110
 - NEW TERRACOTTA FINS H11130A
 - NEW METAL VERTICAL REVEAL H431110
 - NEW METAL CLADDING H431110
 - NEW SIGNAGE (SHOWN INDICATIVE SEE GENERAL NOTE)
 - NEW GLASS FACADE H11115A, H11110B
 - NEW CLEAR GLAZED BALUSTRADE L30560A WITH SS HANDRAIL L30370A
 - NEW CLEAR GLASS AUTOMATIC SLIDING DOORS L20490A
 - NEW DORMER WINDOWS L10917
 - NEW METAL LOUVRES L10950B, L10950D
 - NEW METAL ROOF H74111
 - NEW TERRACE DECKING 055115A
 - NEW INVERTED BROWN ROOF Q217130
 - NEW DOUBLE GLAZED TIMBER SASH REPLACEMENT WINDOWS L30210A
 - NEW CAPPED GLASS FACADE H11111, H11111A
 - NEW MIRROR FINISH METAL PANNELLING H431110 TO SHADOW GAP REVEAL
 - NEW GLAZED SINGLE DOOR H11135A
 - NEW ACOUSTIC LOUVRES TO PLANT ENCLOSURE L10950C
 - NEW ALUMINIUM WINDOW L10330A
 - EXISTING STONE DETAILS RETAINED AND CLEANED C40
 - EXISTING WINDOWS REPLACED WITH LOUVRES L109330D
 - NEW GLAZED ENTRANCE DOUBLE DOORS H11135B
 - NEW METAL PORTAL FRAME Z11111, Z1 FOR PFC FINISH
 - NEW FEATURE LIGHT REFER TO LIGHTING CONSULTANTS SPECIFICATIONS
 - NEW DECORATIVE METAL ELEMENTS Z11111, Z1 FOR PFC FINISH
 - RETAIL SIGNAGE ZONE (SEE GENERAL NOTE)
 - DROP DOWN BALUSTRADE FOR SERVICE ACCESS) 04115A
 - NEW METAL SECURITY GATE L20920
 - (OMITTED)
 - NEW PERFORATED METAL EXTRACT PANEL H31122
 - NEW CAPLESS FLUSH SLOT WINDOW H11110C
 - NEW PAINT FINISH TO EXISTING SHOPFRONTS M60
 - NEW SPANDREL PANEL
 - NEW INVERTED PAVED ROOF J31130A
 - NEW SOLID METAL DOOR L20490C
 - NEW BRICK TO MATCH EXISTING F10110
 - NEW TRANSLUCENT GLAZING H11111
 - NEW CAPPED GLASS FACADE H11111A
 - NEW STONE COPINGS AND FEATURES TO MATCH EXISTING F10110A
 - NEW MICRO LOUVRES L10950A
 - STRUCTURAL STEEL FRAME SYSTEM G10150
 - INSULATION P10
 - ROOF ACCESS HATCH
 - PULL DOWN LOFT LADDER L30422A
 - DRYLING/SARKING K10P20 (REFER TO FLIC SERIES)
 - BLOCKWORK F10
 - SECONDARY STEEL WORK G10152
 - NEW ZINC CAPPING N74211
 - NEW ZINC GLITTER H74210A
 - INSECT MESH H74111
 - VCL P10310
 - BREATHER MEMBRANE P10325A
 - WEEP HOLE F30132
 - FULL CAVITY INSULATION F30150
 - FIXING TIES F30233
 - BRICK SUPPORT SYSTEM F30295
 - CAVITY TRAY F30270A
 - ROLLER BLIND BOX OFFICE N10340A BLACK PAINT TO TENANT FIT OUT
 - MAIL BOX N10280
 - SHADOW GAP PRESSING H74111
 - NEW GLAZING TO LINK BRIDGE AND RESIDENTIAL ENTRANCE H11110D
 - NEW FIRE CURTAIN L20910A
 - ROLLER BLIND RESIDENTIAL N10240
 - NATURAL STONE COVERING M40115A, M40115B
 - SHADOW BOX DETAIL H11110C, H11111A
 - CERAMIC FLOOR TILES M40115C
 - TIMBER PANNELLING K131162A
 - OVERSIZED TERRACOTTA COVER CAP H11111
 - PERFORATED METAL H31122
 - NEW CAPLESS FLUSH SLOT WINDOW H11110F
 - NEW DOUBLE GLAZED TIMBER CASEMENT REPLACEMENT WINDOWS L30210B
 - WEAP HATCH BETWEEN PRIMARY STEELS

GENERAL NOTES:

- GENERAL BUILDING SIGNAGE SHOWN IS INDICATIVE ONLY
- RETAIL SIGNAGE ZONE SHOWN FOR INFORMATION FUTURE SIGNAGE PART OF SEPARATE FUTURE SIGNAGE APPLICATION
- WINDOW NUMBER SYSTEM

WINDOW	FLOOR NUMBER	TYPE	SK NUMBER
C3	04.11.14	CONSTRUCTION ISSUE	
C2	15.05.14	NMA PLANNING ISSUE	
C1	27.01.14	CONSTRUCTION ISSUE	
T1	18.08.13	TENDER ISSUE	
A	05.07.13	STAGE E ISSUE	
-	19.04.13	STAGE D ISSUE	



Revision:

ORMS
Architecture Design

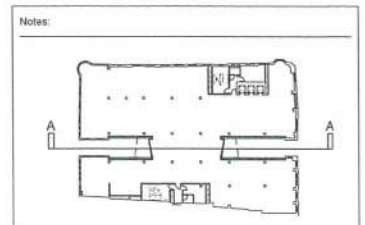
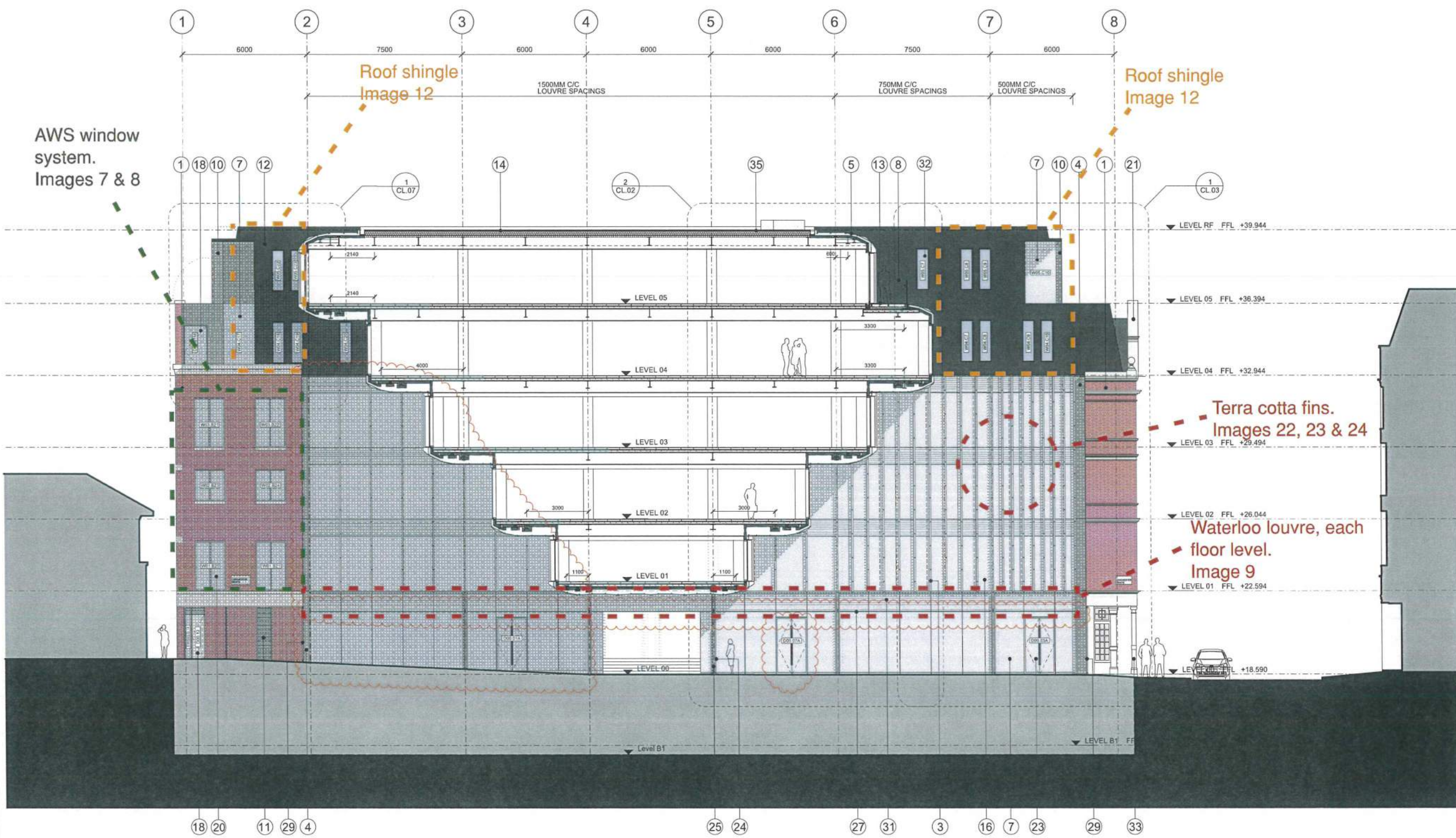
1 Oliver's Yard, 55-71 City Road, London, EC1Y 1HQ
T 0207 833 8533 F 0207 837 7575
E orms@orms.co.uk

Project 79 - 86 CHANCERY LANE
Drawing title PROPOSED NORTH ELEVATION

Scale 1:100 @ A1 | 1:200 @ A3 Drwg. No. 1966 GE 02
Date JANUARY 2013 Rev. C3

Status For information For tender For construction

Do not make. All dimensions to be confirmed on site. Information contained in this drawing is the sole copyright of ORMS Design & Architecture Ltd and is not to be reproduced without permission.



Notes:

- GENERAL BUILDING SIGNAGE SHOWN IS INDICATIVE ONLY
- RETAIL SIGNAGE ZONE SHOWN FOR INFORMATION
- FUTURE SIGNAGE PART OF SEPARATE FUTURE SIGNAGE APPLICATION
- WINDOW NUMBER SYSTEM

REV	DATE	DESCRIPTION
C2	15.05.14	NMA PLANNING ISSUE
C1	27.01.14	CONSTRUCTION ISSUE
T1	16.08.13	TENDER ISSUE
A	05.07.13	STAGE E ISSUE
-	19.04.13	STAGE D ISSUE

Revision:

ORMS
Architecture Design

1 Pine Street London EC1R 0JH
T 0207 833 8533 F 0207 837 7575
E orms@orms.co.uk

Project 79 - 86 CHANCERY LANE

Drawing title PROPOSED SECTIONAL ELEVATION A-A

Scale 1:100 @ A1 Drwg. No. 1966 GS 01

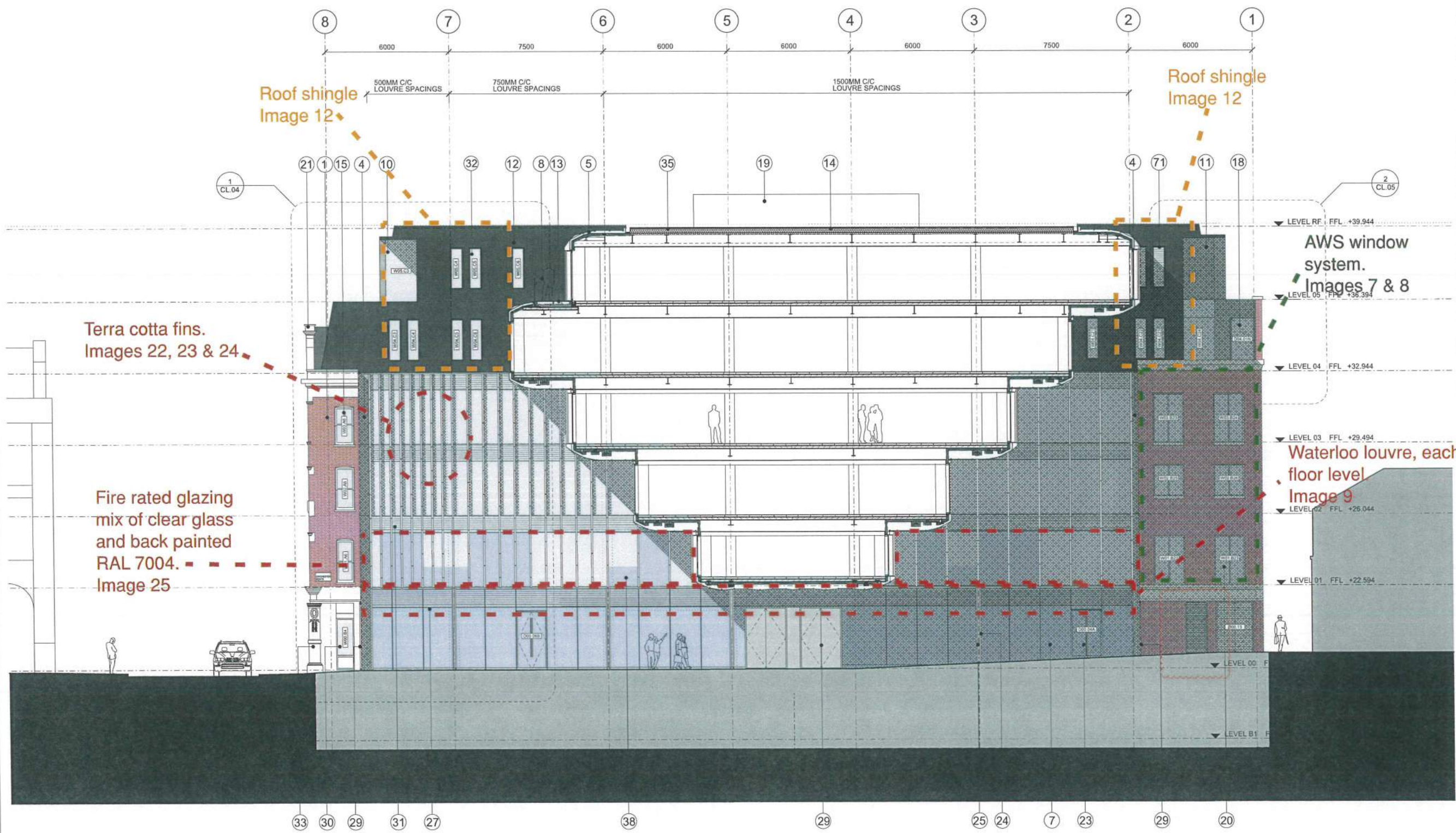
Date JANUARY 2013 Rev. C2

Status For information For tender For construction

Do not scale. All dimensions to be confirmed on site. Information contained in this drawing is the sole copyright of ORMS Designers & Architects Ltd and is not to be reproduced without permission.

BOGHOUSE SITE STAR YARD 1 - 15 CHICHESTER RENTS CHANCERY LANE 33 CHANCERY LANE





Notes:

- GENERAL BUILDING SIGNAGE SHOWN IS INDICATIVE ONLY
- RETAIL SIGNAGE ZONE SHOWN FOR INFORMATION
- FUTURE SIGNAGE PART OF SEPARATE FUTURE SIGNAGE APPLICATION
- WINDOW NUMBER SYSTEM

WINDOW	FLOOR NUMBER	TYPE	EX NUMBER
C3	22.10.14	NMA PLANNING ISSUE	
C2	15.05.14	NMA PLANNING ISSUE	
C1	27.01.14	CONSTRUCTION ISSUE	
T1	16.08.13	TENDER ISSUE	
A	05.07.13	STAGE E ISSUE	
-	19.04.13	STAGE D ISSUE	

Revision:

ORMS
Architecture Design

1 Oliver's Yard, 55-71 City Road, London, EC1Y 1HQ
T 0207 833 8533 F 0207 837 7575
E orms@orms.co.uk

Project 79 - 86 CHANCERY LANE

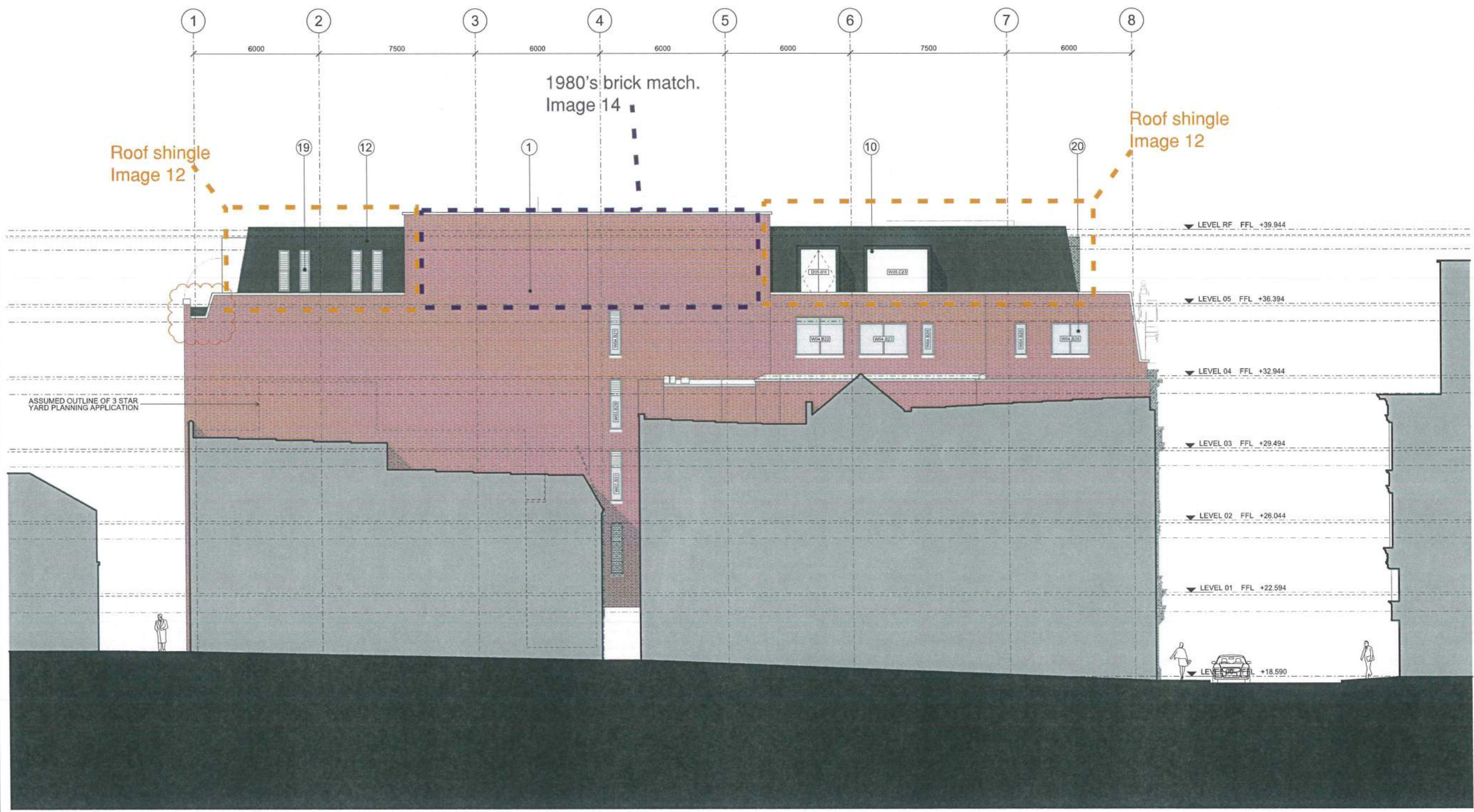
Drawing title PROPOSED SECTIONAL ELEVATION B-B

Scale 1:100 @ A1 / 1:200 @ A3 Drwg. No. 1966 GS 02

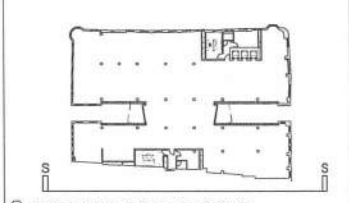
Date JANUARY 2013 Rev. C3

Status For information For tender For construction

Do not scale. All dimensions to be confirmed on site. Information contained in this drawing is the sole copyright of ORMS Designers & Architects Ltd and is not to be reproduced without permission.



Notes



- 1 EXISTING BRICKWORK RETAINED AND CLEANED C43
- 2 NEW STONE CLADDING H51110
- 3 NEW TERRACOTTA FINIS H11120A
- 4 NEW METAL VERTICAL REVEAL H43110
- 5 NEW METAL CLADDING H43110
- 6 NEW SIGNAGE (SHOWN INDICATIVE SEE GENERAL NOTE)
- 7 NEW GLASS FACADE H11110A, H11110B
- 8 NEW CLEAR GLAZED BALUSTRADE L30550A WITH SS HANDRAIL L30335A
- 9 NEW CLEAR GLASS AUTOMATIC SLIDING DOORS L20485A
- 10 NEW DORMER WINDOWS L10217
- 11 NEW METAL LOUVRES L10550B, L10550D
- 12 NEW METAL ROOF H74111
- 13 NEW TERRACE DECKING Q55110A
- 14 NEW INVERTED BROWN ROOF Q37130
- 15 NEW DOUBLE GLAZED TIMBER SASH REPLACEMENT WINDOWS L10210A
- 16 NEW CAPPED GLASS FACADE H11111, H11111A
- 17 NEW MIRROR FINISH METAL PANNELLING H43110 TO SHADOW GAP REVEAL
- 18 NEW GLAZED SINGLE DOOR H11135A
- 19 NEW ACUSTIC LOUVRES TO PLANT ENCL. GLASURE L10550C
- 20 NEW ALUMINIUM WINDOW L10320A
- 21 EXISTING STONE DETAILS RETAINED AND CLEANED C43
- 22 EXISTING WINDOWS REPLACED WITH LOUVRES L10230D
- 23 NEW GLAZED ENTRANCE DOUBLE DOORS H11135B
- 24 NEW METAL PORTAL FRAME Z11111, Z31 FOR PPC FINISH
- 25 NEW FEATURE LIGHT REFER TO LIGHTING CONSULTANTS SPECIFICATIONS
- 26 NEW DECORATIVE METAL ELEMENTS Z11110, Z31 FOR PPC FINISH
- 27 RETAIL SIGNAGE ZONE (SEE GENERAL NOTE)
- 28 DROP DOWN BALUSTRADE (FOR SERVICE ACCESS) G41135A
- 29 NEW METAL SECURITY GATE L20620
- 30 FINISHED
- 31 NEW PERFORATED METAL EXTRACT PANEL H31122
- 32 NEW CAPLESS FLUSH SLOT WINDOW H11110C
- 33 NEW PAINT FINISH TO EXISTING SHOPFRONTS M80
- 34 NEW SPANREL PANEL
- 35 NEW INVERTED PAVED ROOF J31130A
- 36 NEW SOLID METAL DOOR L20485C
- 37 NEW BRICK TO MATCH EXISTING F10110
- 38 NEW TRANSLUCENT GLAZING H11111
- 39 NEW CAPPED GLASS FACADE H11111A
- 40 NEW STONE COPINGS AND FEATURES TO MATCH EXISTING F1025A, F10105A
- 41 NEW MICRO LOUVRES L10550A
- 42 STRUCTURAL STEEL FRAME SYSTEM G10150
- 43 INSULATION F10
- 44 ROOF ACCESS HATCH
- 45 PULL DOWN LOFT LADDER L30422A
- 46 DRYLINING SARKING K10P20 (REFER TO FLRC SERIES)
- 47 BLOCKWORK F10
- 48 SECONDARY STEEL WORK G10152
- 49 NEW ZINC CAPPING H43111
- 50 NEW ZINC GUTTER H74219A
- 51 INSECT MESH H74111
- 52 VCL F10310
- 53 BREATHER MEMBRANE P10320A
- 54 WEEP HOLE F30132
- 55 FULL CAVITY INSULATION F30150
- 56 FIXING TIES F30233
- 57 BRICK SUPPORT SYSTEM F30265
- 58 CAVITY TRAY F30375A
- 59 ROLLER BLIND BOX OFFICE W0201A BLINDS PART OF TENANT FIT OUT
- 60 MAIL BOX N10290
- 61 SHADOW GAP PRESSING H74111
- 62 NEW GLAZING TO LINK BRIDGE AND RESIDENTIAL ENTRANCE H11110D
- 63 NEW FINE CURTAIN L2010A
- 64 ROLLER BLIND RESIDENTIAL N10240
- 65 NATURAL STONE COVERING M40119A, M40119B
- 66 SHADOW BOX DETAIL H11110C, H11111A
- 67 CERAMIC FLOOR TILES M40110C
- 68 TIMBER PANNELLING K13160A
- 69 OVERSIZED TERRACOTTA COVER CAP H11111
- 70 PERFORATED METAL H31122
- 71 NEW CAPLESS FLUSH SLOT WINDOW H11110F
- 72 NEW DOUBLE GLAZED TIMBER CASEMENT REPLACEMENT WINDOWS L10220B
- 73 WSP PLY BETWEEN PRIMARY STEELS

GENERAL NOTES

- GENERAL BUILDING SIGNAGE SHOWN IS INDICATIVE ONLY
- RETAIL SIGNAGE FOR SHOWN FOR INFORMATION
- FUTURE SIGNAGE TO BE SHOWN FOR INFORMATION
- SIGNAGE APPLICATION
- WINDOW NUMBER SYSTEM:

W	FLOOR NUMBER	X	Y	DX	NUMBER
C3	02.10.14	NMA PLANNING ISSUE			
C2	15.05.14	NMA PLANNING ISSUE			
C1	27.01.14	CONSTRUCTION ISSUE			
T1	16.08.13	TENDER ISSUE			
A	05.07.13	STAGE E ISSUE			
-	19.04.13	STAGE D ISSUE			



Revision:

ORMS
Architecture Design

1 Pine Street London EC1R 0JH
T 0207 833 8533 F 0207 837 7575
E orms@orms.co.uk

Project 79 - 86 CHANCERY LANE

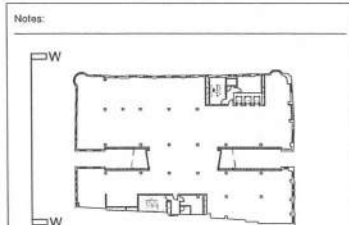
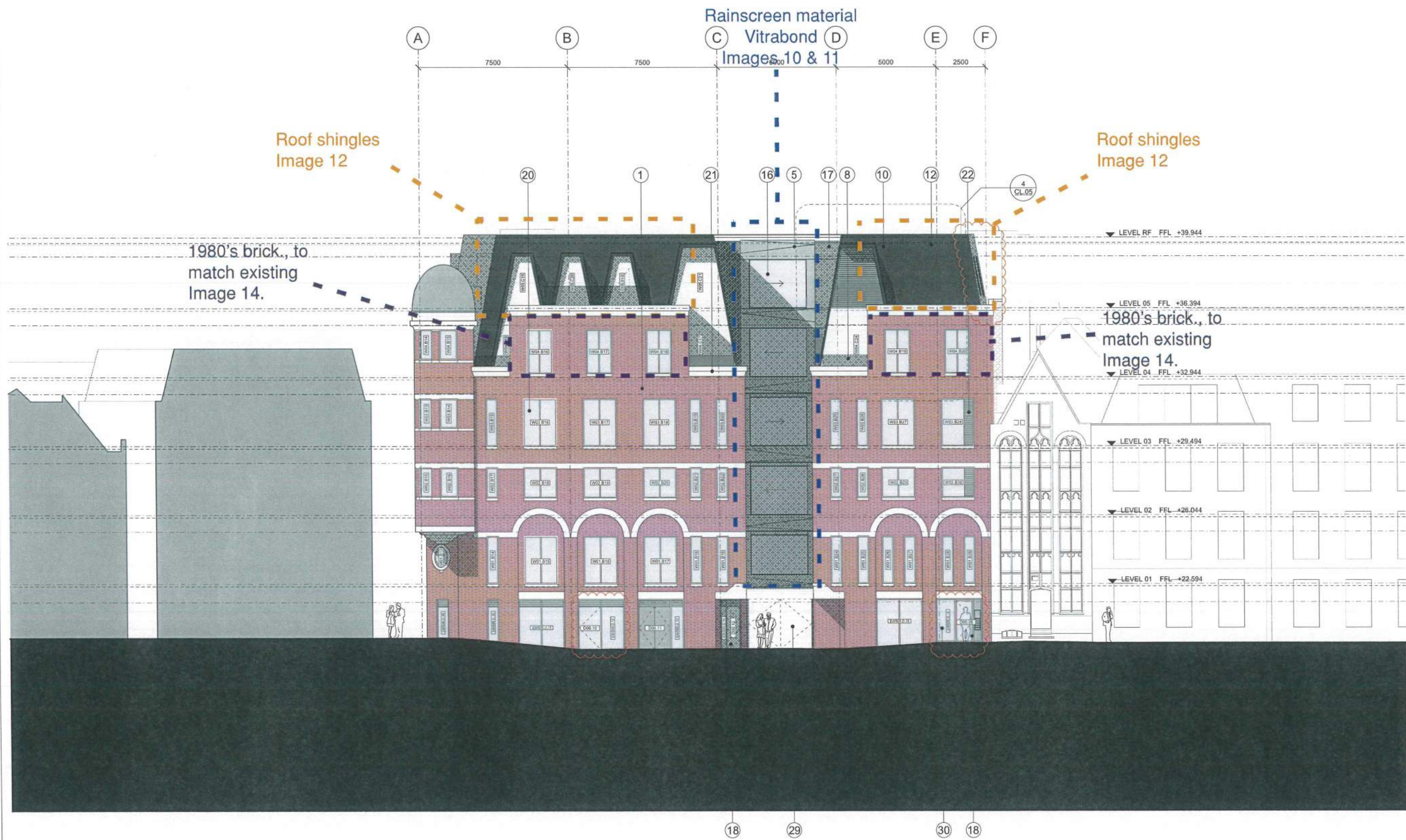
Drawing title PROPOSED SOUTH ELEVATION

Scale 1:100 @ A1 1:200 @ A3 Drwg. No. 1966 GE 04

Date JANUARY 2013 Rev. C3

Status For information For tender For construction

Do not scale. All dimensions to be confirmed on site. Information contained in this drawing is the sole copyright of ORMS Designers & Architects Ltd and is not to be reproduced without permission.



- Notes:
- 1 EXISTING BRICKWORK RETAINED AND CLEANED C40
 - 2 NEW STONE CLADDING H51110
 - 3 NEW TERRACOTTA FINISH H11133A
 - 4 NEW METAL VERTICAL REVEAL H43110
 - 5 NEW METAL CLADDING H43110
 - 6 NEW SIGNAGE (SHOWN INDICATIVE SEE GENERAL NOTE)
 - 7 NEW GLASS FACADE H11110A, H11110B
 - 8 NEW CLEAR GLAZED BALUSTRADE L30560A WITH 3/5 HANDRAIL L30570A
 - 9 NEW CLEAR GLASS AUTOMATIC SLIDING DOORS L20490A
 - 10 NEW DORMER WINDOWS L10317
 - 11 NEW METAL LOUVRES L10550B, L10550D
 - 12 NEW METAL ROOF H24111
 - 13 NEW TERRACE DECKING Q05110A
 - 14 NEW INVERTED BROWN ROOF Q37130
 - 15 NEW DOUBLE GLAZED TIMBER BASH REPLACEMENT WINDOWS L10210A
 - 16 NEW CAPPED GLASS FACADE H11111, H11111A
 - 17 NEW MIRROR FINISH METAL PANNELLING H43110 TO SHADOW GAP REVEAL
 - 18 NEW GLAZED SINGLE DOOR H11135A
 - 19 NEW ACOUSTIC LOUVRES TO PLANT ENCLOSURE L10550C
 - 20 NEW ALUMINIUM WINDOW L10335A
 - 21 EXISTING STONE DETAILS RETAINED AND CLEANED C40
 - 22 EXISTING WINDOWS REPLACED WITH LOUVRES L10330D
 - 23 NEW GLAZED ENTRANCE DOUBLE DOORS H11135B
 - 24 NEW METAL PORTAL FRAME Z11111, Z11 FOR FPC FINISH
 - 25 NEW FEATURE LIGHT REFER TO LIGHTING CONSULTANTS SPECIFICATIONS
 - 26 NEW DECORATIVE METAL ELEMENTS Z11110, Z11 FOR FPC FINISH
 - 27 RETAIL SIGNAGE ZONE (SEE GENERAL NOTE)
 - 28 DROP DOWN BALUSTRADE FOR SERVICE ACCESS Q4135A
 - 29 NEW METAL SECURITY GATE L20420
 - 30 JOMITTES
 - 31 NEW PERFORATED METAL EXTRACT PANEL H31122
 - 32 NEW CAPLESS FLUSH SLOT WINDOW H11110C
 - 33 NEW PAINT FINISH TO EXISTING SHOPFRONTS M99
 - 34 NEW SPANDREL PANEL
 - 35 NEW INVERTED PAVED ROOF J31130A
 - 36 NEW SOLID METAL DOOR L20480C
 - 37 NEW BRICK TO MATCH EXISTING F10110
 - 38 NEW TRANSLUCENT GLAZING H11111
 - 39 NEW CAPLESS GLASS FACADE H11111A
 - 40 NEW STONE COPINGS AND FEATURES TO MATCH EXISTING F10750A, F10760A
 - 41 NEW MICRO LOUVRES L10550A
 - 42 STRUCTURAL STEEL FRAME SYSTEM G10150
 - 43 INSULATION P10
 - 44 ROOF ACCESS HATCH
 - 45 FULL DOWN LOFT LADDER L30423A
 - 46 DRINKING SADDLE K10P20 (REFER TO FLIRC SERIES)
 - 47 BLOCKWORK F10
 - 48 SECONDARY STEEL WORK G10150
 - 49 NEW ZINC CAPPING H24311
 - 50 NEW ZINC GUTTER H24210A
 - 51 INSECT MESH H24111
 - 52 VCL P10310
 - 53 BREATHER MEMBRANE P10320A
 - 54 WEEP HOLE F30132
 - 55 FILL CAVITY INSULATION F30150
 - 56 FIXING TIES F30233
 - 57 BRICK SUPPORT SYSTEM F30255
 - 58 CAVITY TRAY F3030A
 - 59 ROLLER BLIND NOV OFFICE H10240A BLINDS PART OF TENANT FIT OUT
 - 60 MAIL BOX N10280
 - 61 SHADOW GAP PRESSING H24111
 - 62 NEW GLAZING TO LINK BRIDGE AND RESIDENTIAL ENTRANCE H11110D
 - 63 NEW FIRE CURTAIN L20610A
 - 64 ROLLER BLIND RESIDENTIAL N10240
 - 65 NATURAL STONE COVERING M40115A, M40115B
 - 66 SHADOW BOX DETAIL H11110C, H11111A
 - 67 CERAMIC FLOOR TILES M40110C
 - 68 TIMBER PANNELLING K13160A
 - 69 OVERSIZED TERRACOTTA COVER CAP H11111
 - 70 PERFORATED METAL H31122
 - 71 NEW CAPLESS FLUSH SLOT WINDOW H11110F
 - 72 NEW DOUBLE GLAZED TIMBER CASEMENT REPLACEMENT WINDOWS L10210B
- GENERAL NOTES:
- GENERAL BUILDING SIGNAGE SHOWN IS INDICATIVE ONLY
 - FULL SIGNAGE ZONE SHOWN FOR INFORMATIONAL PURPOSES ONLY
 - SIGNAGE APPLICATION OF SEPARATE FUTURE WINDOW NUMBER SYSTEM
- | WINDOW NUMBER SYSTEM | W | FLOOR NUMBER | X | TYPE | OX NUMBER |
|----------------------|----------|--------------------|---|------|-----------|
| C2 | 15.05.14 | NMA PLANNING ISSUE | | | |
| C1 | 27.01.14 | CONSTRUCTION ISSUE | | | |
| T1 | 16.08.13 | TENDER ISSUE | | | |
| A | 05.07.13 | STAGE E ISSUE | | | |
| - | 19.04.13 | STAGE D ISSUE | | | |

Revision:

ORMS
Architecture
Design

1 Pine Street London EC1R 0JH
T 0207 833 8533 F 0207 837 7575
E orms@orms.co.uk

Project: 79 - 86 CHANCERY LANE
Drawing title: PROPOSED WEST ELEVATION

Scale: 1:100 @ A1 | 1:200 @ A3 | Drwg. No. 1966 GE 03
Date: JANUARY 2013 | Rev. C2

Status: For information For tender For construction

Do not scale. All dimensions to be confirmed on site. Information contained in this drawing is the sole copyright of ORMS Design & Architects Ltd and is not to be reproduced without permission.

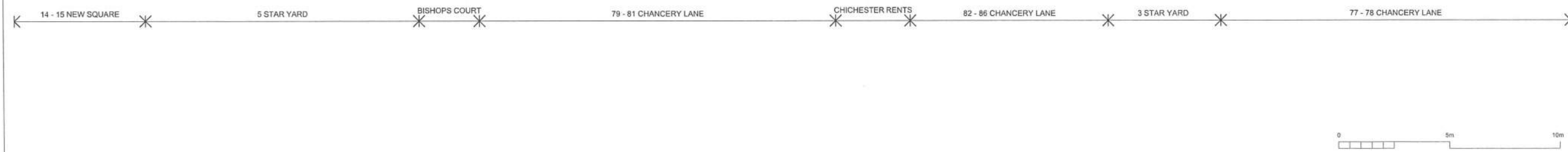




Image 1

Timber casement window, internal view



Image 2

Timber casement window, internal beading profile



Image 3
Timber casement
window, external
beading view



Image 4

Timber sash window, external view



Image 5

Aluminium window profile, ADS80 FR



Image 6

Aluminium window profile,
ADS80 FR,
internal view



Image 7

Aluminium
window profile,
AWS65 external
view



Image 8

Aluminium
window profile,
AWS65 internal
view



Image 9
Waterloo type
louvre

vitrabond
ALUMINIUM COMPOSITE PANEL

valcan

Colour: Clear Anodised VB

Panel Thickness : 4mm

Core Thickness : 3mm

Aluminium Thickness : 0.5 x 0.5mm

Core Material : Mineral (FR)

Colour Code 100

T: 44 (0) 1278 428 245

E: enquiries@valcan.co.uk

W: www.valcan.co.uk



PLEASE DO NOT FORGET
ADMIN.

Image 10

Vitrabond
rainscreen
material sample,
data

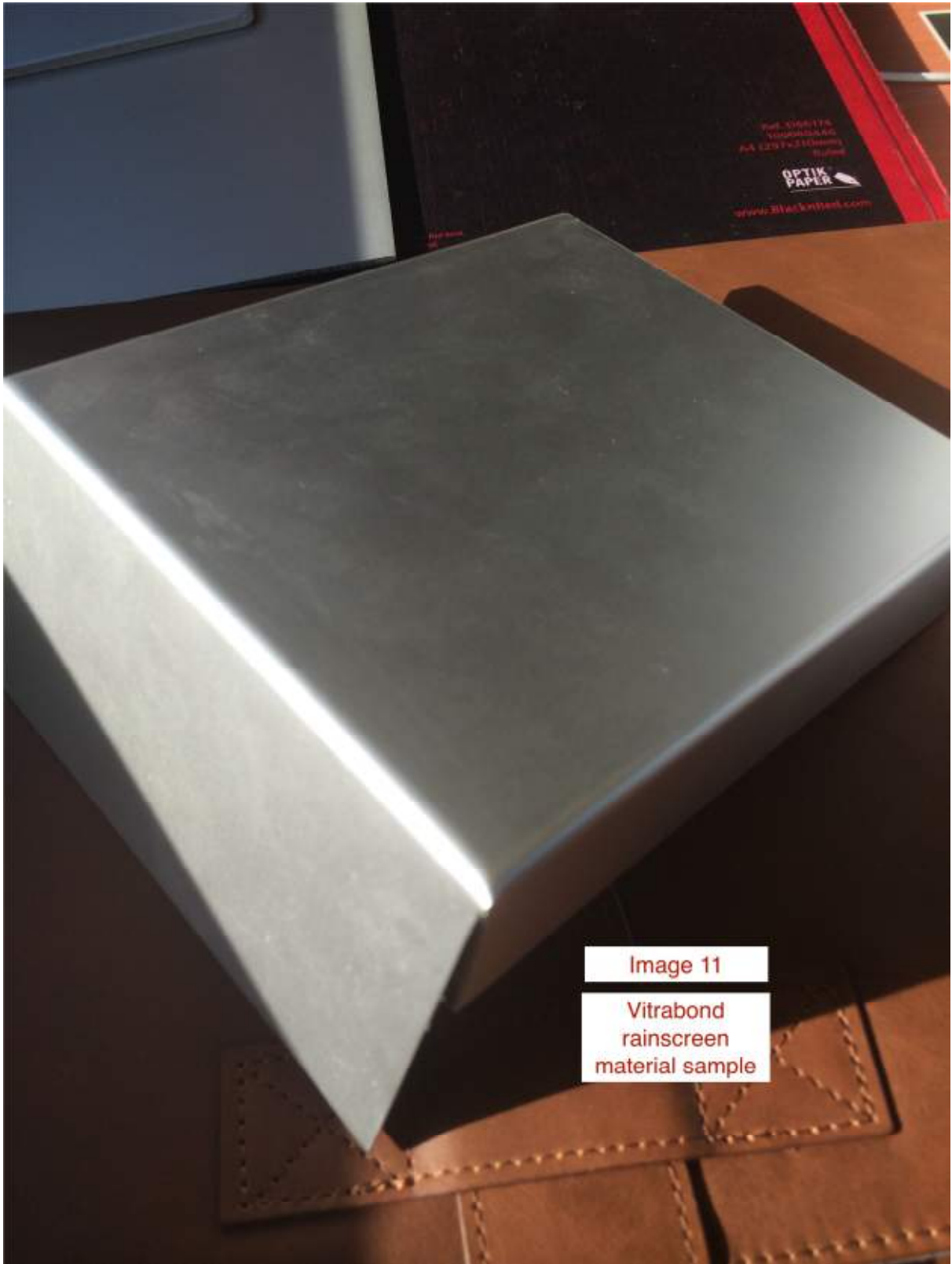


Image 11

Vitrabond
rainscreen
material sample

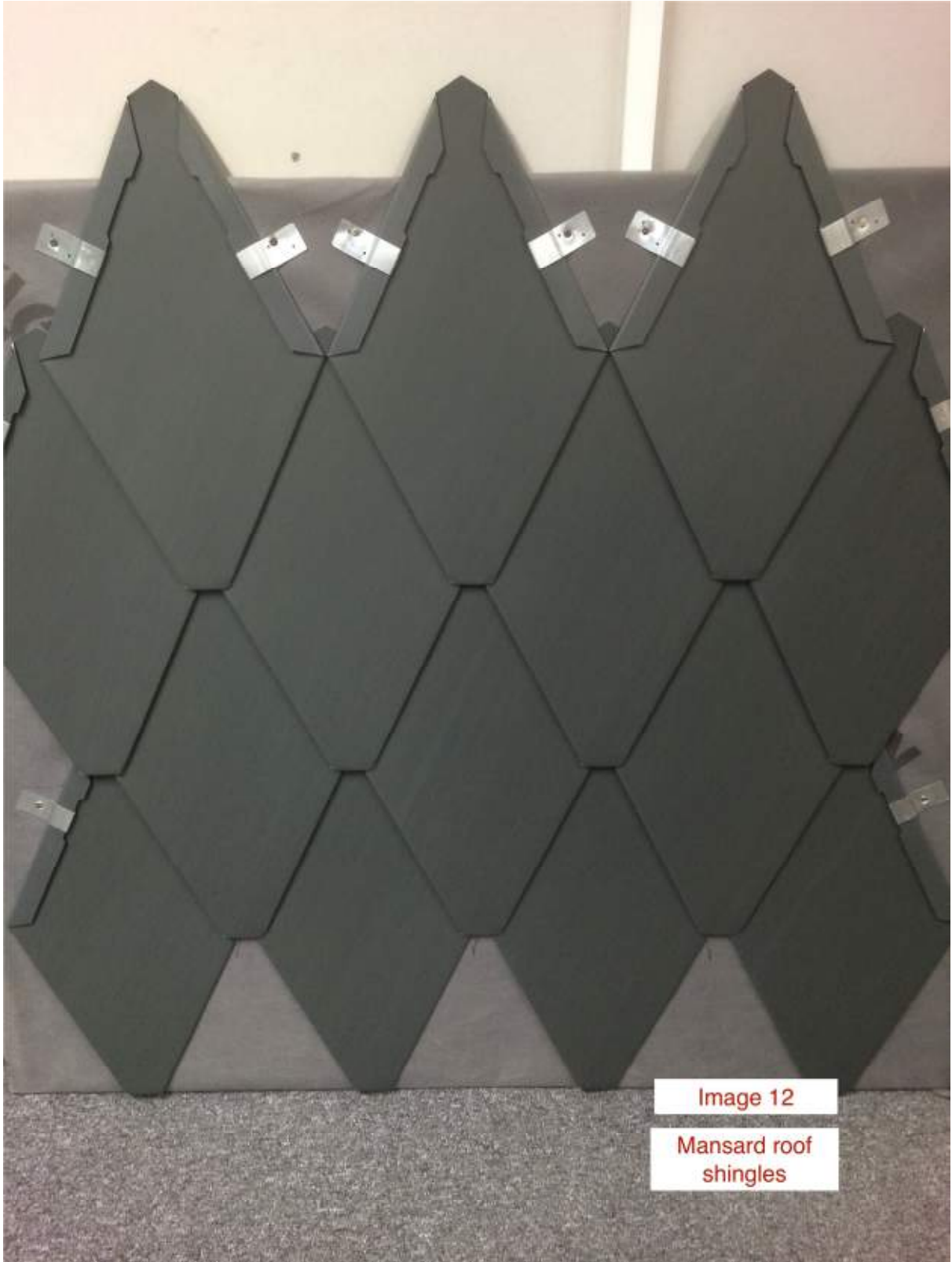


Image 12

Mansard roof
shingles

Original stone facade



STONE RESTORATION SERVICES LTD
PRECAST 220 FAIR FACED FINISH
CHANCERY LANE PROJECT

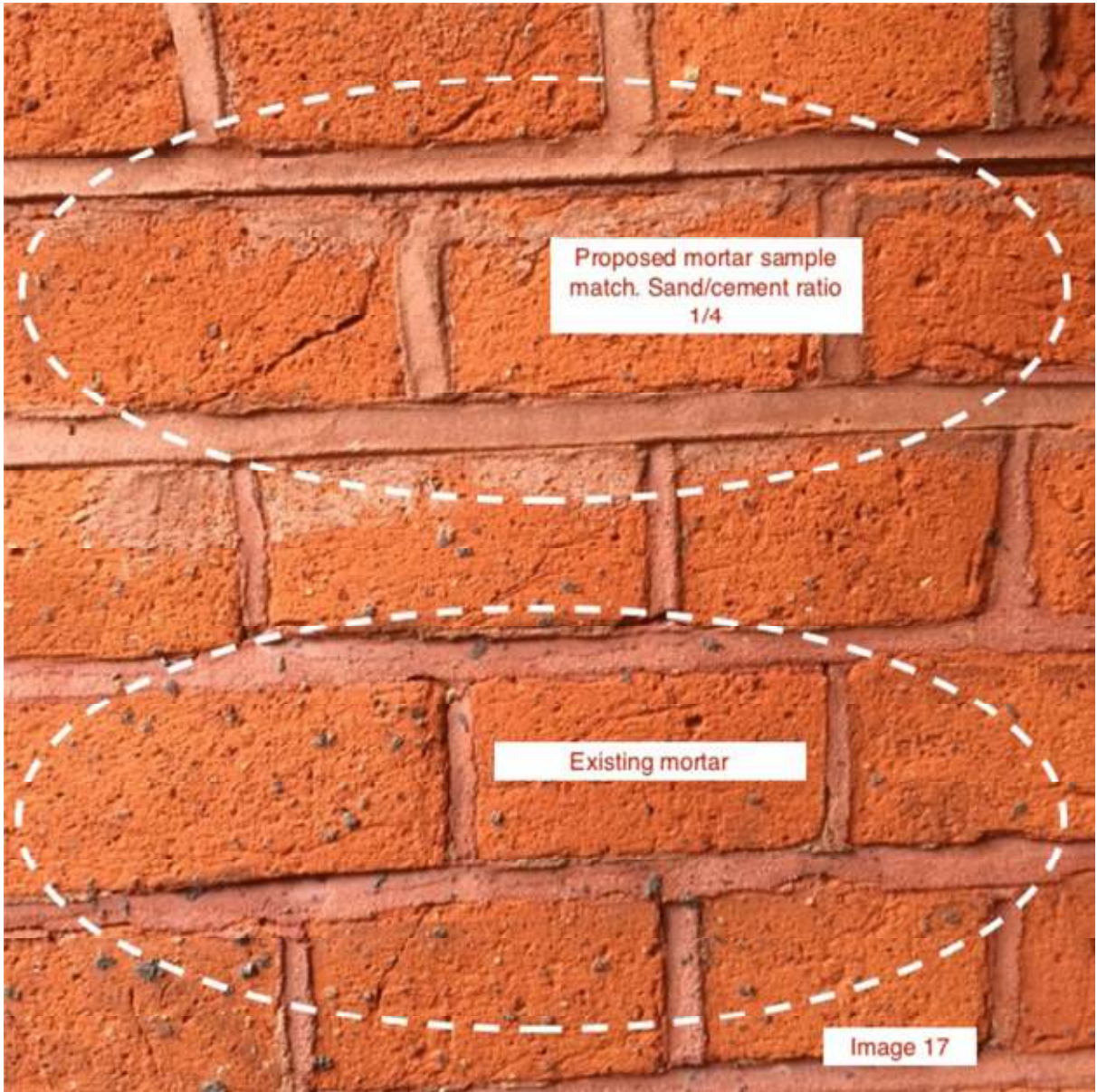
Proposed new stone
facade material

Image 13





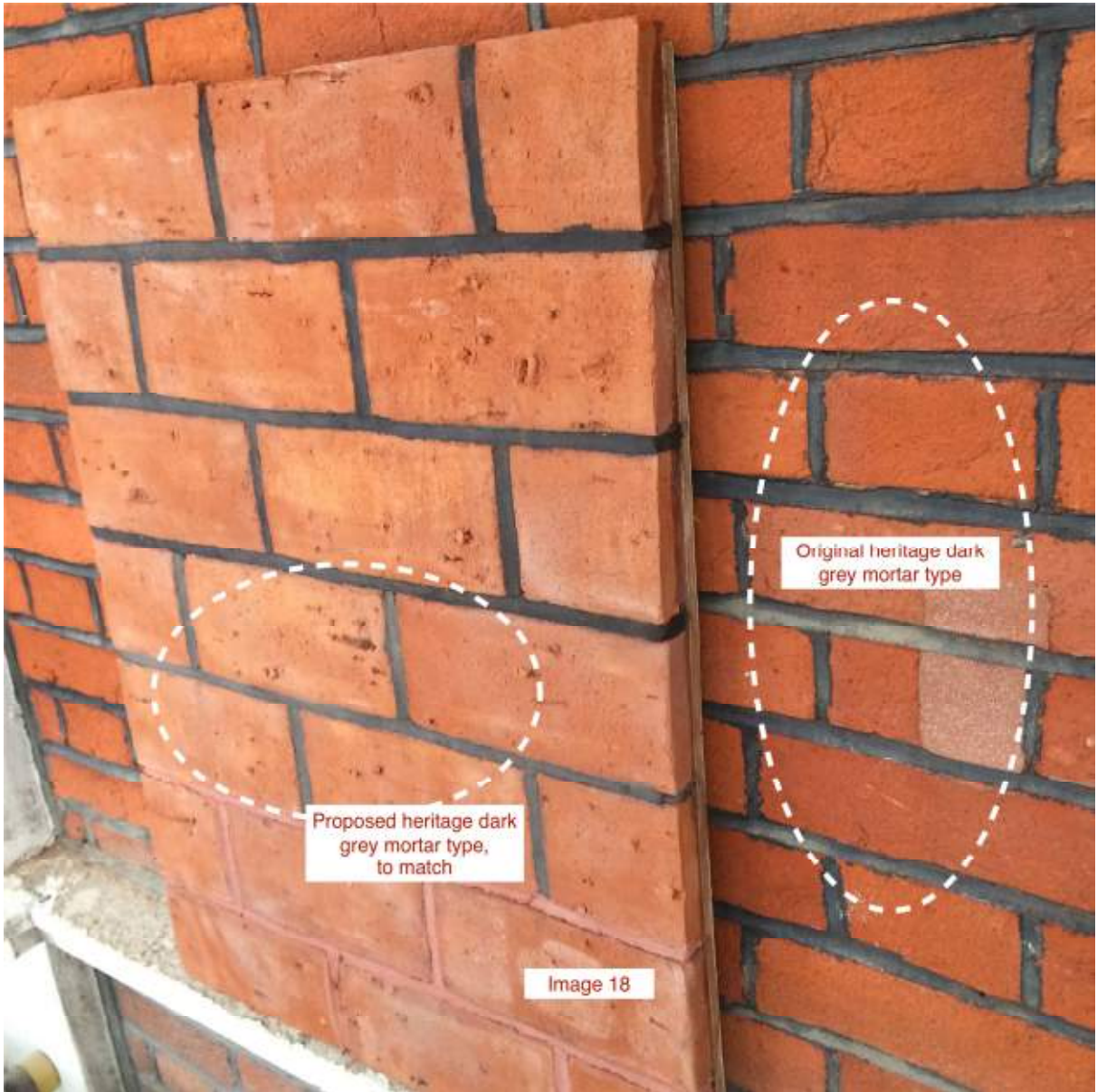
Image 16



Proposed mortar sample
match. Sand/cement ratio
1/4

Existing mortar

Image 17



Proposed heritage dark grey mortar type, to match

Original heritage dark grey mortar type

Image 18



Image 19

Mock up, external
security gate with
perforations and
MIO paint finish



Image 20

MIO paint finish



Marshall's

Scoutmoor
Diamond Sawn

This sample has been selected as a typical example of this stone type and finish. It does not represent or imply the overall proportions of colours that will be found in final deliveries. It should be noted that colour variations and markings are a characteristic of natural stone products. Inherent variation cannot be controlled nor the precise shade of stone guaranteed.

Image 21

Yorkstone paving
& tactile paving
samples.
Scoutmoor
diamond sawn



Image 22

Terra cotta fin
mock up to
Chichester Rents

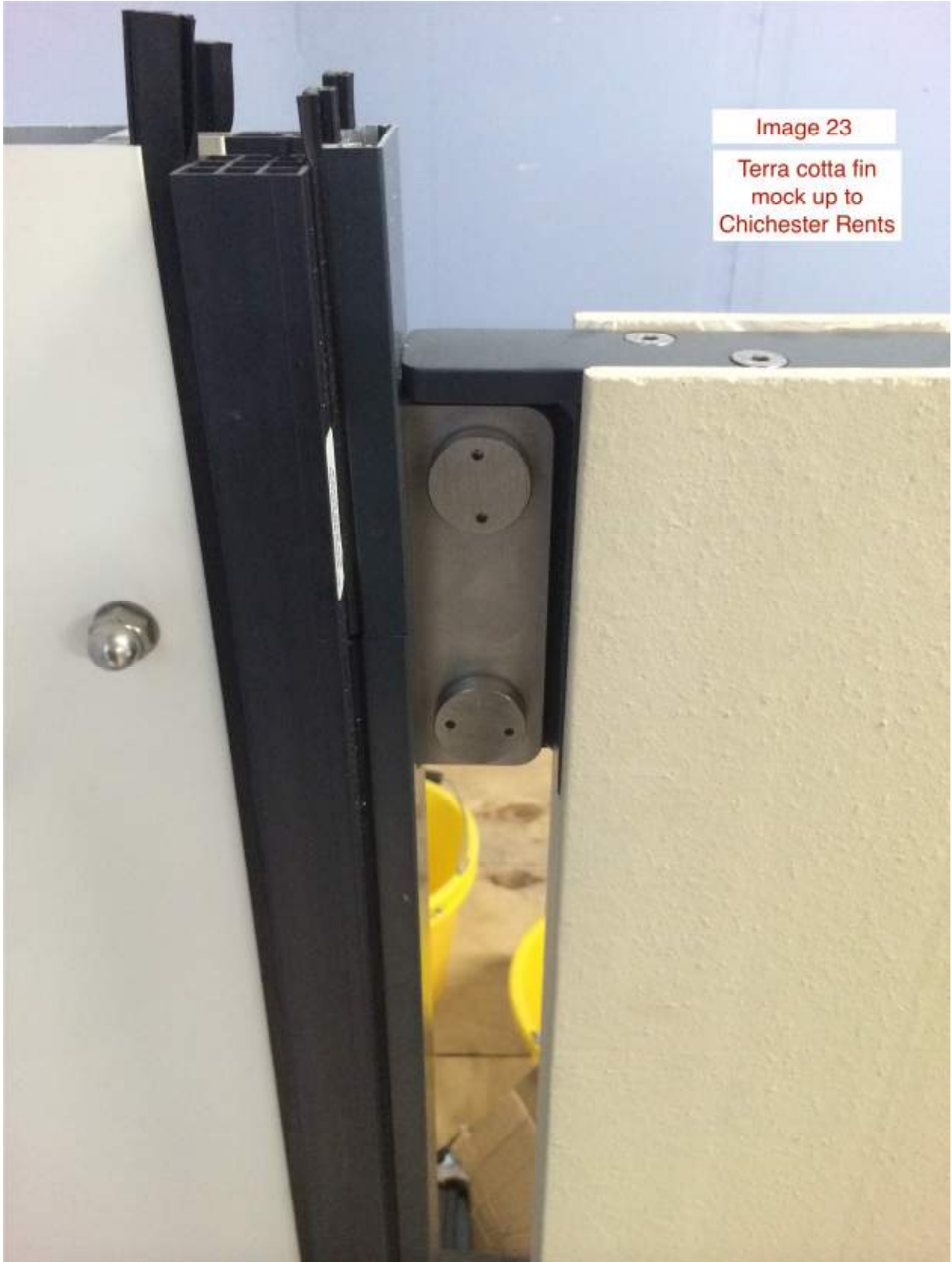


Image 23
Terra cotta fin
mock up to
Chichester Rents



Image 24

Terra cotta fin
mock up to
Chichester Rents