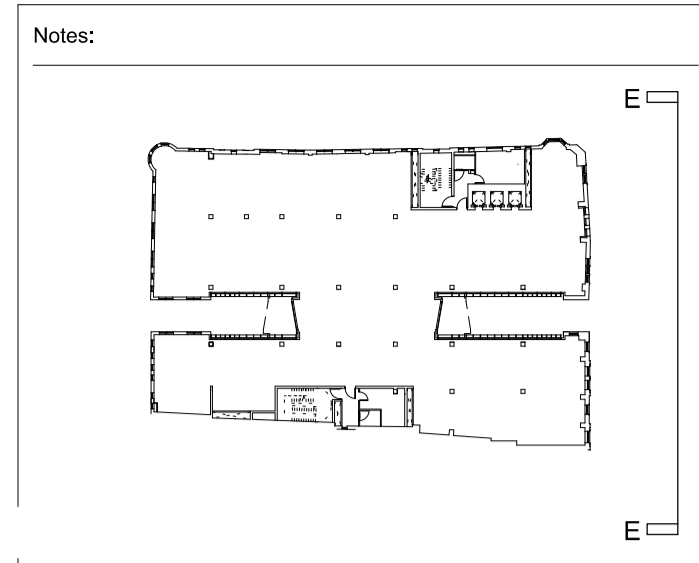


Sash windows  
 Refer to drawing LW2690-01  
 for profiles & specification L10



GENERAL BUILDING SIGNAGE SHOWN IS INDICATIVE ONLY  
 RETAIL SIGNAGE ZONE SHOWN FOR INFORMATION  
 FUTURE SIGNAGE PART OF SEPARATE FUTURE  
 SIGNAGE APPLICATION  
 WINDOW NUMBER SYSTEM:

WINDOW	FLOOR NUMBER	TYPE	OR NUMBER
C2	15.05.14	NMA PLANNING ISSUE	
C1	27.01.14	CONSTRUCTION ISSUE	
T1	16.08.13	TENDER ISSUE	
A	05.07.13	STAGE E ISSUE	
-	19.04.13	STAGE D ISSUE	

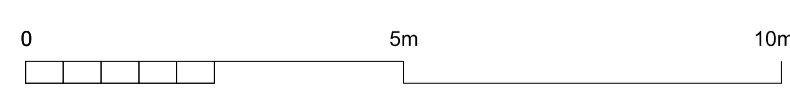
Revision:

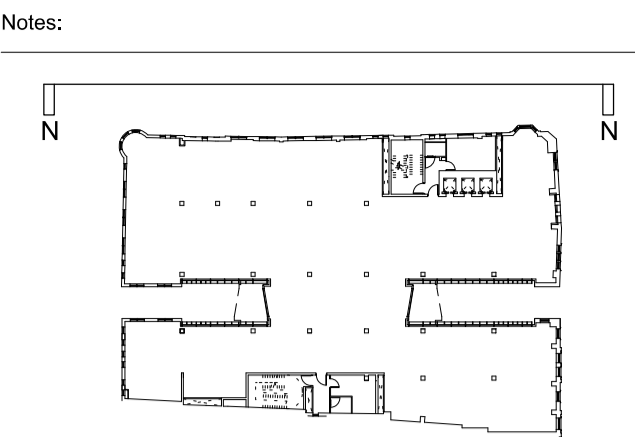
**ORMS**  
 Architecture  
 Design  
 1 Pine Street London EC1R 0JH  
 T 0207 833 8533 F 0207 837 7575  
 E orms@orms.co.uk

Project 79 - 86 CHANCERY LANE  
 Drawing title PROPOSED EAST ELEVATION

Scale 1:100 @ A1 / 1:200 @ A3 Drwg. No. 1966 GE 01  
 Date JANUARY 2013 Rev. C2

Status  For information  For tender  For construction  
 Do not scale. All dimensions to be confirmed on site.  
 Information contained in this drawing is the sole copyright of ORMS Designers & Architects Ltd.  
 and is not to be reproduced without permission.





Casement windows  
Refer to drawing LW2690-14  
for profiles & specification L10



GENERAL BUILDING SIGNAGE SHOWN IS INDICATIVE ONLY  
 RETAIL SIGNAGE ZONE SHOWN FOR INFORMATION  
 FUTURE SIGNAGE PART OF SEPARATE FUTURE  
 SIGNAGE APPLICATION

WINDOW NUMBER SYSTEM:  
 W WINDOW FLOOR NUMBER X TYPE OX NUMBER

C3	04.11.14	CONSTRUCTION ISSUE
C2	15.05.14	NMA PLANNING ISSUE
C1	27.01.14	CONSTRUCTION ISSUE
T1	16.08.13	TENDER ISSUE
A	05.07.13	STAGE E ISSUE
-	19.04.13	STAGE D ISSUE

Revision:

**ORMS**  
 Architecture  
 Design

1 Oliver's Yard, 55-71 City Road, London, EC1Y 1HQ  
 T 0207 833 8533 F 0207 837 7575  
 E orms@orms.co.uk

Project 79 - 86 CHANCERY LANE

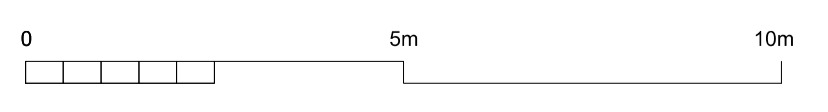
Drawing title PROPOSED  
 NORTH ELEVATION

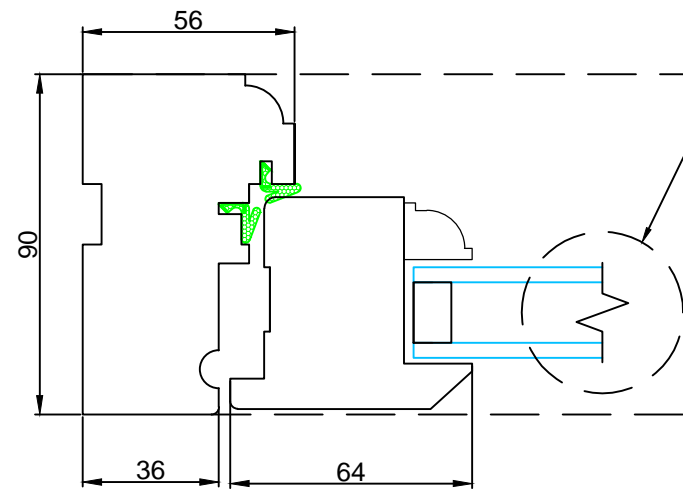
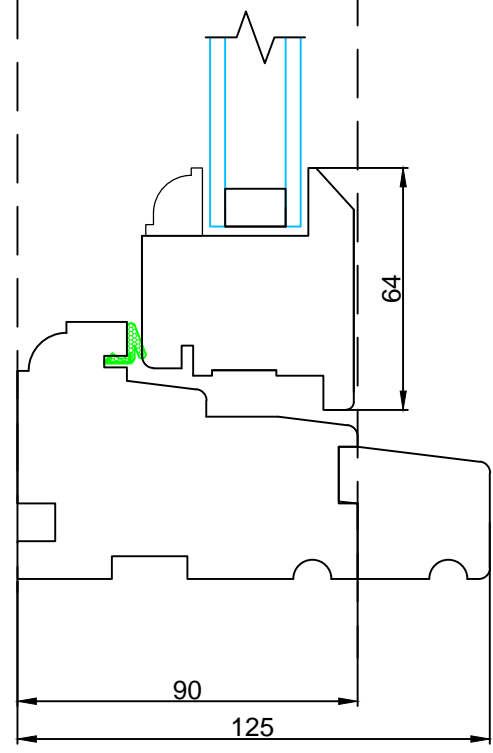
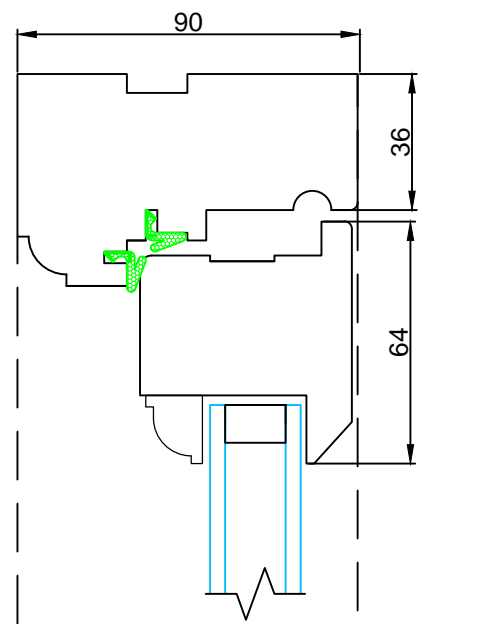
Scale 1:100 @ A1 / 1:200 @ A3 Drwg. No. 1966 GE 02

Date JANUARY 2013 Rev. [C3]

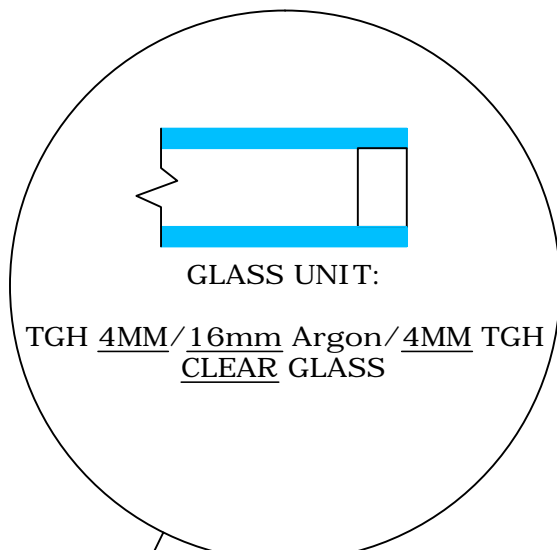
Status  For information  For tender  For construction

Do not scale. All dimensions to be confirmed on site.  
 Information contained in this drawing is the sole property of ORMS Designers & Architects Ltd.  
 and is not to be reproduced without permission.

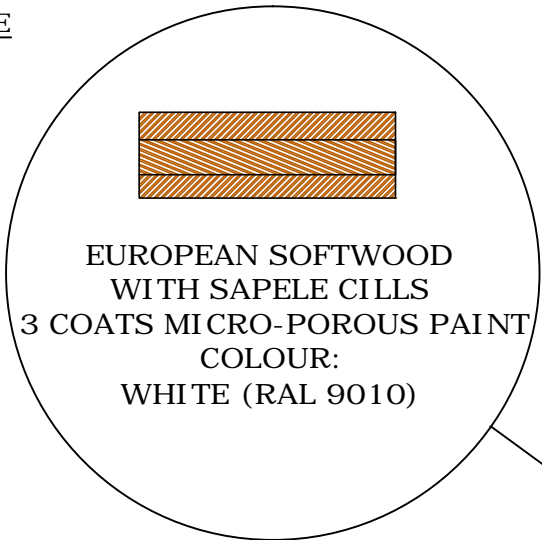




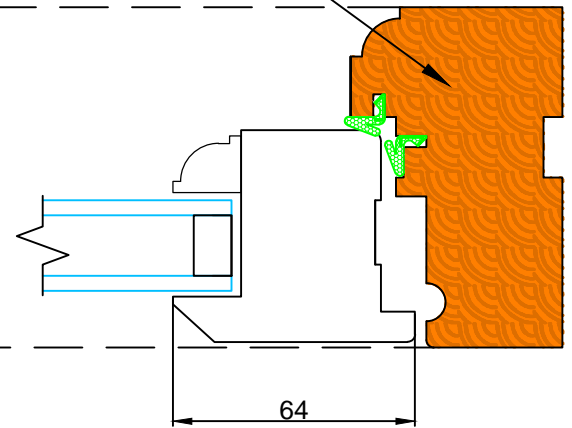
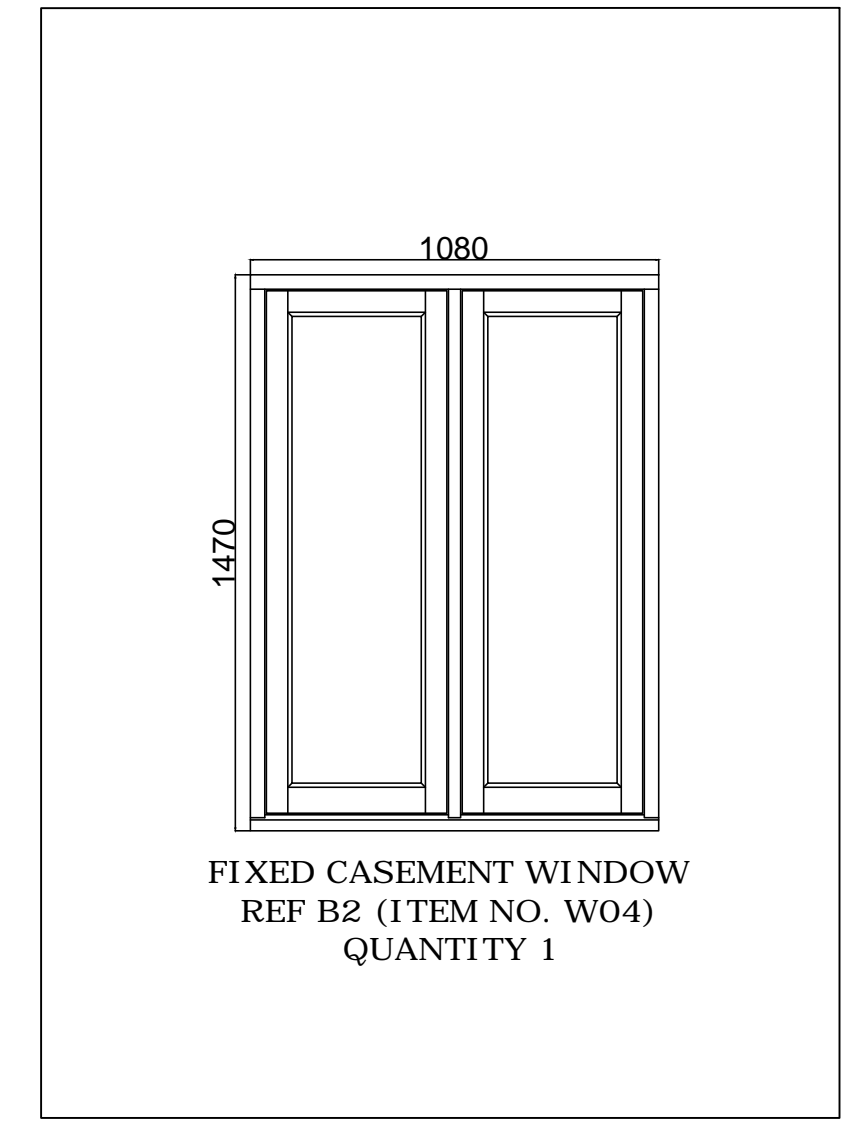
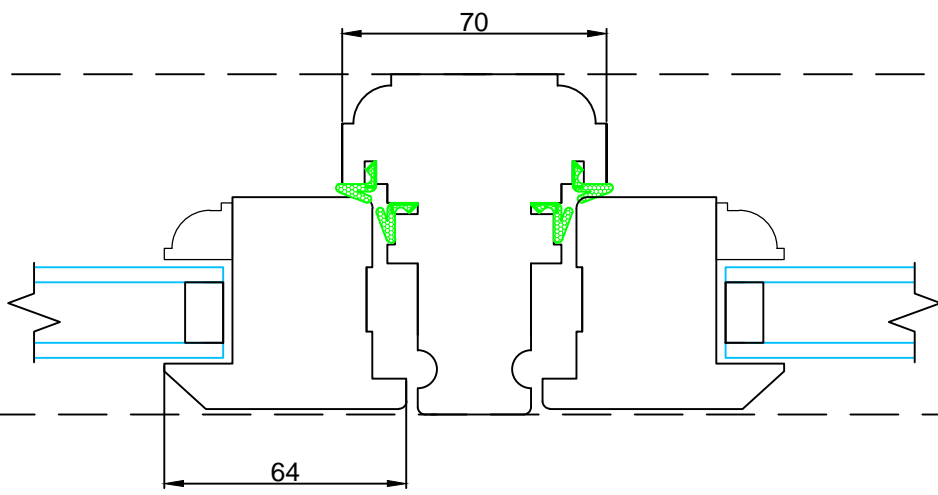
HARDWARE



GLASS



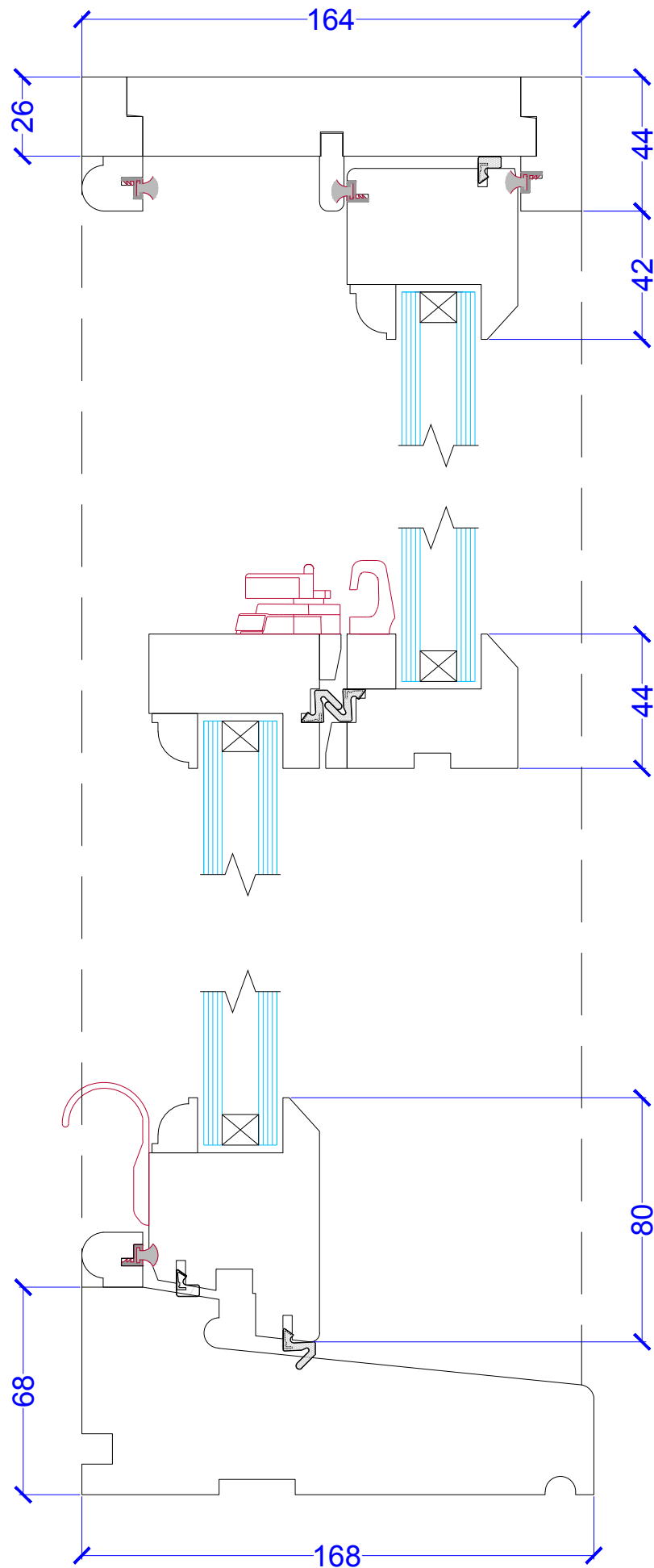
WOOD



DRAWING No	LW-2690_14	COMPONENT CODE	N/A
SCALE	1:1, 1:10 @ A1	DRAWN BY	MT
DATE	07.04.2014	REVISION	A
TITLE	79-86 Chancery Lane WINDOWS SCHEDULE 14 OF 19		

Made-to-order  
timber  
windows  
and doors

# W01,W04-REF-A1 - QTY 2



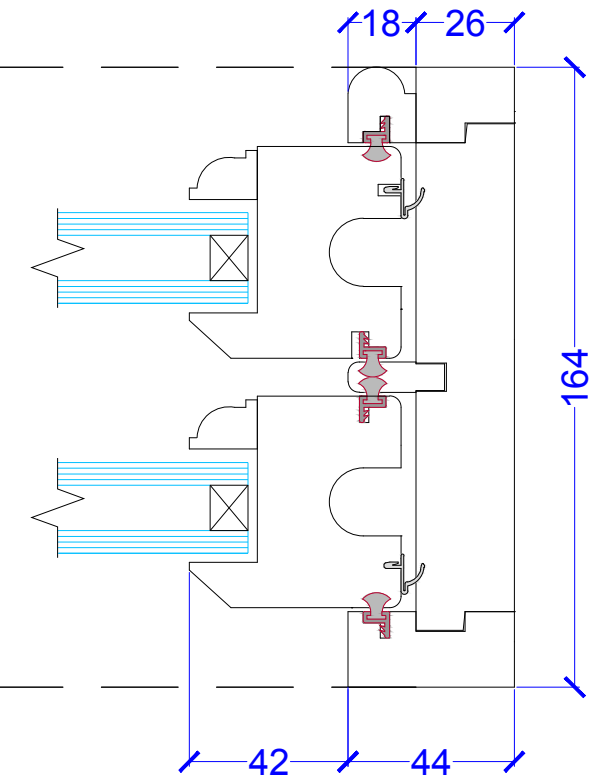
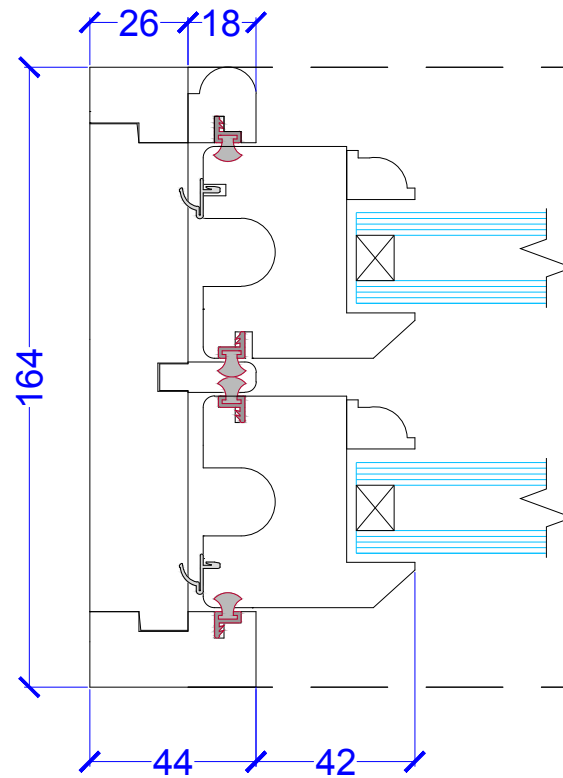
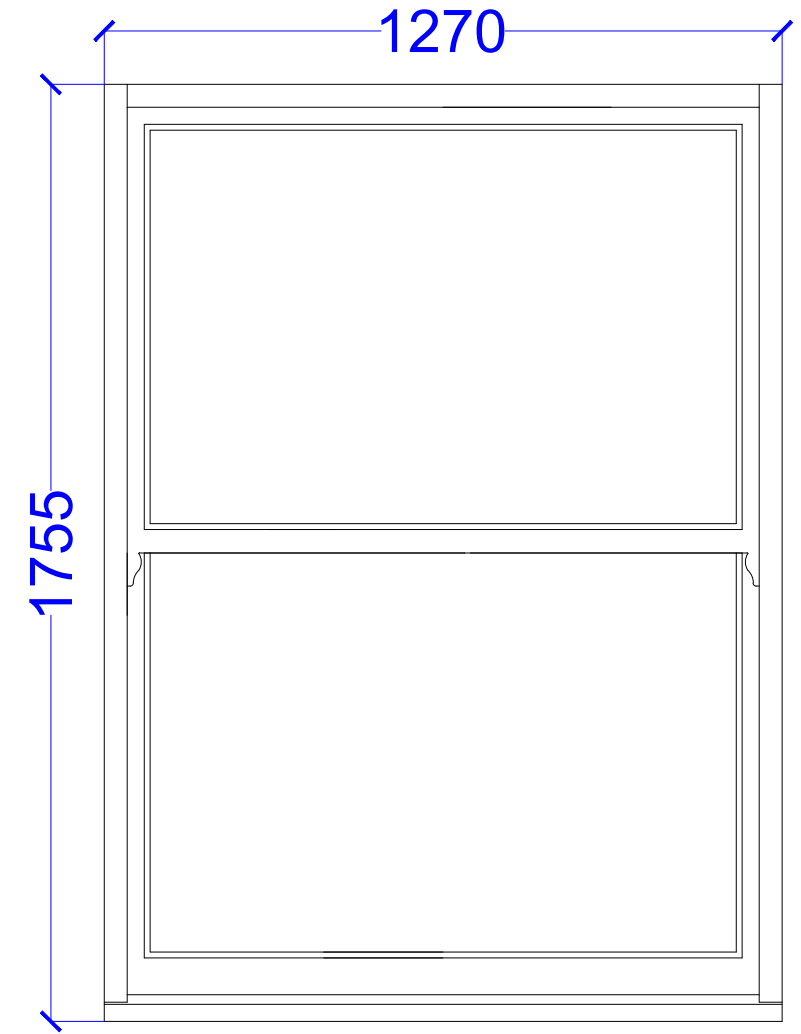
- 
- SATIN CHROME**
- 2X SASH LIFTS**
- 2X HERITAGE FITCH FASTENERS**
- 2X LOCKING VENTLOCK®**
- TRICKLE VENTS: NO**



**GLASS UNIT:**  
**6MM TGH / 12MM ARGON / 6MM TGH**  
**CLEAR GLASS**




**EUROPEAN SOFTWOOD**  
**WITH SAPELE(HARDWOOD) CILL**  
**3 COATS MICRO-POROUS PAINT**  
**COLOUR:**  
**WHITE (RAL 9010)**



DRAWING No	LW-2690_01	COMPONENT CODE	N/A
SCALE	1:1, 1:10 @ A1	DRAWN BY	MT
DATE	24.06.2014	REVISION	D
TITLE	79-86 Chancery Lane WINDOWS SCHEDULE 01 OF 30		

Made-to-order  
 timber  
 windows  
 and doors



**L10**

**Windows/ Rooflights/ Screens/ Louvres**

## **L10 Windows/ Rooflights/ Screens/ Louvres**

To be read with Preliminaries/ General conditions.

### **GENERAL**

- 110 EVIDENCE OF PERFORMANCE
- Certification: Provide independently certified evidence that all incorporated components comply with specified performance requirements.
- 115 TIMBER PROCUREMENT
- Timber (including timber for wood based products): Obtained from well managed forests and/ or plantations in accordance with:
    - The laws governing forest management in the producer country or countries.
    - International agreements such as the Convention on International Trade in Endangered Species of wild fauna and flora (CITES).
  - Documentation: Provide either:
    - Documentary evidence (which has been or can be independently verified) regarding the provenance of all timber supplied.
    - Evidence that suppliers have adopted and are implementing a formal environmental purchasing policy for timber and wood based products.
- 120 SITE DIMENSIONS
- Procedure: Before starting work on designated items take site dimensions, record on shop drawings and use to ensure accurate fabrication.
  - Designated items: all windows.

140A CONTROL SAMPLES

i) Tender Samples

- Submit with the tender sufficient samples of the following showing the Contractors selected systems included within the Tender
- A 'L' corner sample of each system 300mm x 300mm length including cappings, pressure plates, gaskets, including glazing finished in the specified system and colour.

ii) Control Samples (Post Contract pre-Procurement)

Submit for comment prior to order/procurement a sample of the following:

- 300mm length of each type of framing including cappings and pressure plates, glazing bars and cills.
- All proposed gasket types, extrusions, moulds, etc. in materials and colour specified. All samples shall include at least one joint.
- Glass samples 600mm x 600mm of all specified glass types.
- All fixings.
- Proposed types of finish.
- Ironmongery.
- Sliding operating mechanisms, track and wheels including automatic chain actuators.
- Switches and controls.

iii) Trial assemblies (Ahead to fabrication of remaining areas)

Construct independently from the site works the following:

- a typical bay of the curtain wall glazing system L10.316 & L10.317

iv) Benchmark Control Samples

Provide on site as part of the works, as part of the first completed bay of construction, samples for inspection for all cladding types specified within this Works specification. Obtain comments from the Architect and contract Administrator before proceeding with the remaining works. Submit as required until the works is in accordance with the Contract, and Contractors Final detailed design drawings.

**PRODUCTS**

205 WINDOW MATERIALS SPECIFICATION

- Minimum BRE 'Green Guide to Specification Online' rating: A.

210A WOOD WINDOWS TYPE EWS05 1st to 3rd Floors Chancery Lane elevation:

- Manufacturer: [Mumford and Wood].  
Conservation Sash Window
  - " Manufacturer: Mumford & Wood
    - Web: www.mumfordwood.com
    - Email: sales@mumfordwood.com
    - Tel: +44 (0)1621 818155
    - Fax: +44 (0)1621 818175
    - Address: Tower Business Park, Kelvedon Road, Tiptree, Essex CO5 0LX
  - " Product reference: Conservation Sash Window
  - " Type: Flat
  - " Moulding: Ovolo /Lambs tongue
  - " Frame:
    - Jamb and head: 32 mm /44 mm /57 mm
    - Sill: 10 x 10 mm water bar groove /35 mm projection /60 mm projection /85 mm projection /Flush
  - " Sash:
    - Glass:
      - Type: Laminated /Low 'E' toughened /Obscure /Sheet /Sound control /As drawing /As schedule
- Arrangement:
  - Glazing bar: Fine Lambs Tongue, 18 mm /Lambs Tongue, 22 mm
  - Slide/ tilt mechanism: Not required /Required
  - Horns: Not required /Required
  - " Trickle vents: Manufacturer's standard
  - " Finish: Painted, RAL colour: 9010
  - " Linings:
    - " Ironmongery: Catch, brass /Catch, polished chrome /Catch, satin chrome /D pull handles, brass /D pull handles, polished chrome /D pull handles, satin chrome /Sash lifts, brass /Sash lifts, polished chrome /Sash lifts, satin chrome /Sash pulls, brass /Sash pulls, polished chrome /Sash pulls, satin chrome /Security lock stop, bolt and key
- Other requirements :
  - Overall window U-Value to achieve minimum = 1.6 W/m<sup>2</sup>K
  - Full FSC chain of custody certification for windows.
  - BRE Green Guide rating of A or higher.



210B WOOD WINDOWS TYPE EWS21 1st to 3rd Floors Bishops Court elevation; :

- " Manufacturer: [Mumford and Wood].
- Product reference: [Conservation Acoustic Casement].  
Species: [All framing, sash stiles and rails laminated knot free (clear graded) FSC Chain of Custody Certified Larch or solid Douglas Fir at our option.].  
" Finish as delivered: [Manufacturer's primer and undercoat and top coat, Three coats colour TBC].  
" Glazing details: [General: Windows will be delivered to site pre-glazed with insulating glass units conforming to:].  
BS 952: 1995: Glass for Glazing – Part 1: Classification  
BS EN 572: 2004: Glass in building – Basic soda lime silicate glass products – Part 2: Float glass  
BS EN 12150: 2000: Glass in building – Thermally toughened soda lime silicate safety glass – Part 1: definition and description  
BS EN ISO 12543: 1998: Glass in building – Laminated safety glass  
BS EN 12600: 2006: Specification for Impact Performance  
BS EN 1279: 2002: Glass in building – Insulating glass units  
BS 6262: 1982: Code of practice for glazing for buildings  
BS 6262: 2005: Glazing for buildings – Part 4: Code of practice for safety related to human impact  
BS 6206: 1981: Specification for impact performance requirements for flat safety glass and safety plastics for use in buildings  
BS EN 6180: 1999: Barriers in and about buildings – Code of practice  
Type: Hi performance neutral toughened and laminated safety solar performance double glazed units comprising external layer of neutral metallic coated solar control to achieve acoustic performance as setout in table below:  
Inner Pane : to achieve acoustic performance as setout in table below:  
Cavity: to achieve acoustic performance as setout in table below:  
Outer Pane: to achieve acoustic performance as setout in table below:  
Individual frequency responses as detailed below :  
Façade Minimum Sound Reduction Index (dB)  
at Octave Band Centre Frequency (Hz)  
125 2 5 0 500 1k 2k 4k  
25 26 33 37 37 35  
In addition to the above requirements, external noise intrusion levels shall not exceed BCO guide to specification 2009 (NR38)  
Profile: Ovolo moulded  
External Liner : Plain square liners.  
Cills :Flush Hardwood painted.  
Operation: Casement hinged inward opening windows  
Ironmongery/ Accessories: [  
(2 catches on windows over 1245mm wide).  
Security locks to all windows.  
Weatherseals : Full standard sealing with Sashglide® insert weatherpile.].  
Glazing bars : 17mm wide applied glazing bars to both sides of glass with internal glazing spacer within glazing unit  
Fixing: [Screwed to timber framing as clause 780].  
Other requirements :
    - Overall window U-Value to achieve minimum = 1.6 W/m<sup>2</sup>K
    - Full FSC chain of custody certification for windows.
    - BRE Green Guide rating of A or higher.