

H92 / 112
Weathering Steel
Roof Screening

Parapet
Level varies

Lower extent of sawtooth
+43.825

H92 / 114 Weathering Steel
Parapet Section

Parapet structure

Weathering steel rainscreen cladding panel
EPDM membrane
Mineral Fibre Insulation

Back painted glass unit
L10 / 335 Window Unit

L10 / 335 Window Unit

Double glazed unit

Weathered steel grating

H92 / 113 Weathering Steel Gutter

Weathering steel rainscreen cladding panel
Gutter formed from metal plate
hung from secondary steelwork

Cement fibre board
Thermal insulation
EPDM membrane
Weathering steel rainscreen cladding panel

H92 / 111 Weathering Steel Soffit

H20 / 151
Panellised Cladding

Grade 4 lead flashing
Fibre cement board
Insulation
SFS infill wall on existing roof membrane
Existing brickwork
Existing waterproof membrane to be made good and protected

Revisions

No.	Description	By	Chk
1	141217 Planning Issue	DC	SE

By Chk Notes

PLEASE NOTE: ALL STRUCTURAL STEELWORK IS SHOWN INDICATIVELY IN BLUE, AND IS BASED ON THESE DRAWINGS BY MICHAEL JACKSON CONSULTING

No.	Date	By	Chk	Description
1024-03-2011 A	DATED: MAR 12			
1024-03-2011 B	DATED: MAR 12			
1024-03-2011 C	DATED: MAR 12			
1024-03-2011 D	DATED: MAR 12			
1024-03-2011 E	DATED: MAR 12			
1024-03-2011 F	DATED: MAR 12			
1024-03-2011 G	DATED: MAR 12			
1024-03-2011 H	DATED: MAR 12			
1024-03-2011 I	DATED: MAR 12			
1024-03-2011 J	DATED: MAR 12			
1024-03-2011 K	DATED: MAR 12			
1024-03-2011 L	DATED: MAR 12			
1024-03-2011 M	DATED: MAR 12			
1024-03-2011 N	DATED: MAR 12			
1024-03-2011 O	DATED: MAR 12			
1024-03-2011 P	DATED: MAR 12			
1024-03-2011 Q	DATED: MAR 12			
1024-03-2011 R	DATED: MAR 12			
1024-03-2011 S	DATED: MAR 12			
1024-03-2011 T	DATED: MAR 12			



Bennetts Associates Architects
 1 Rawstone Place London EC1V 7NL
 T +44 (0)20 7520 3300 F +44 (0)20 7520 3333
 E mail@bennettsassociates.com

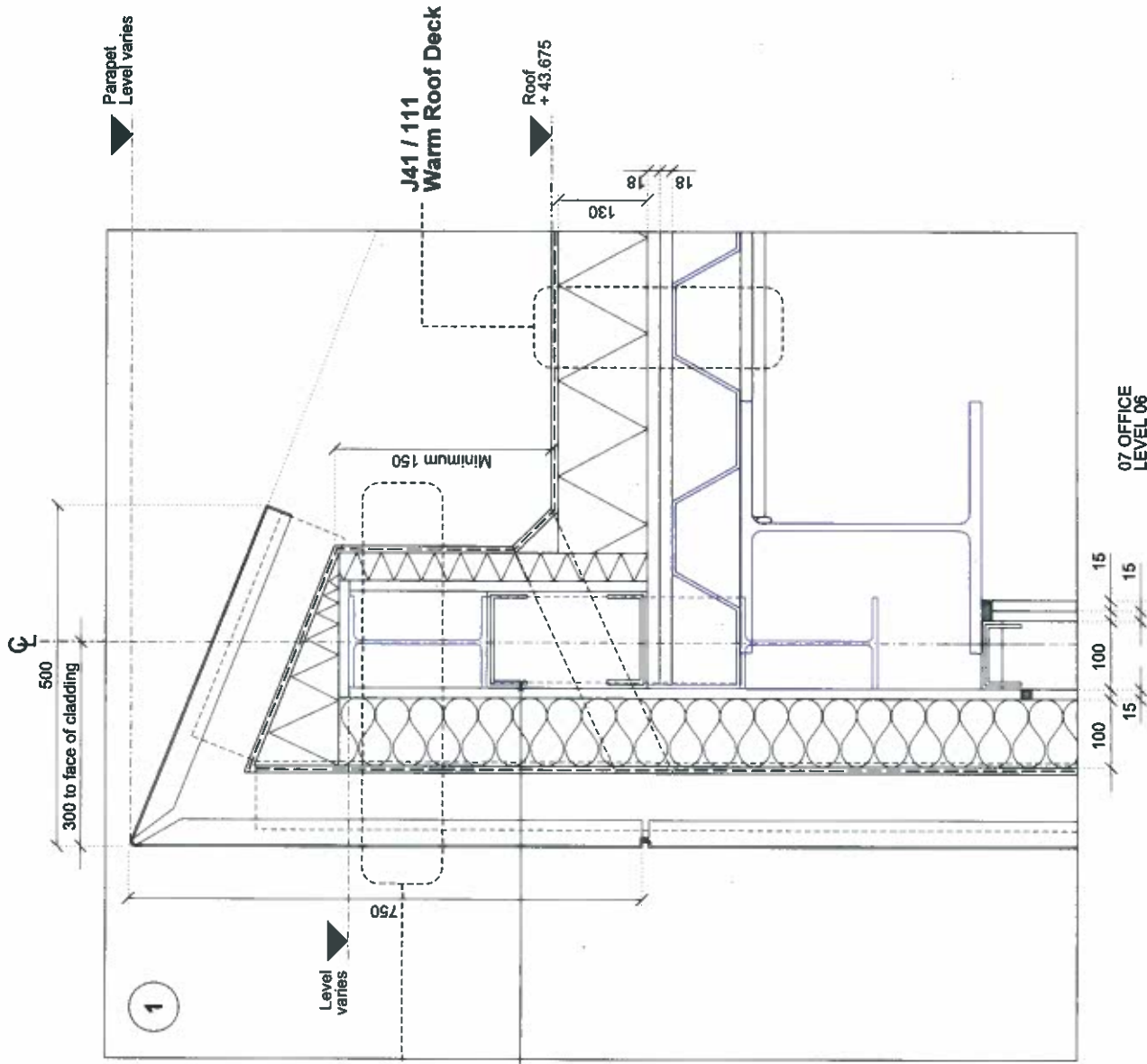
Project
Shaftesbury Theatre
 The Theatre of Comedy Company

Drawing Title
Phase 3
Section Detail D-D
Rainscreen parapet, base + soffit

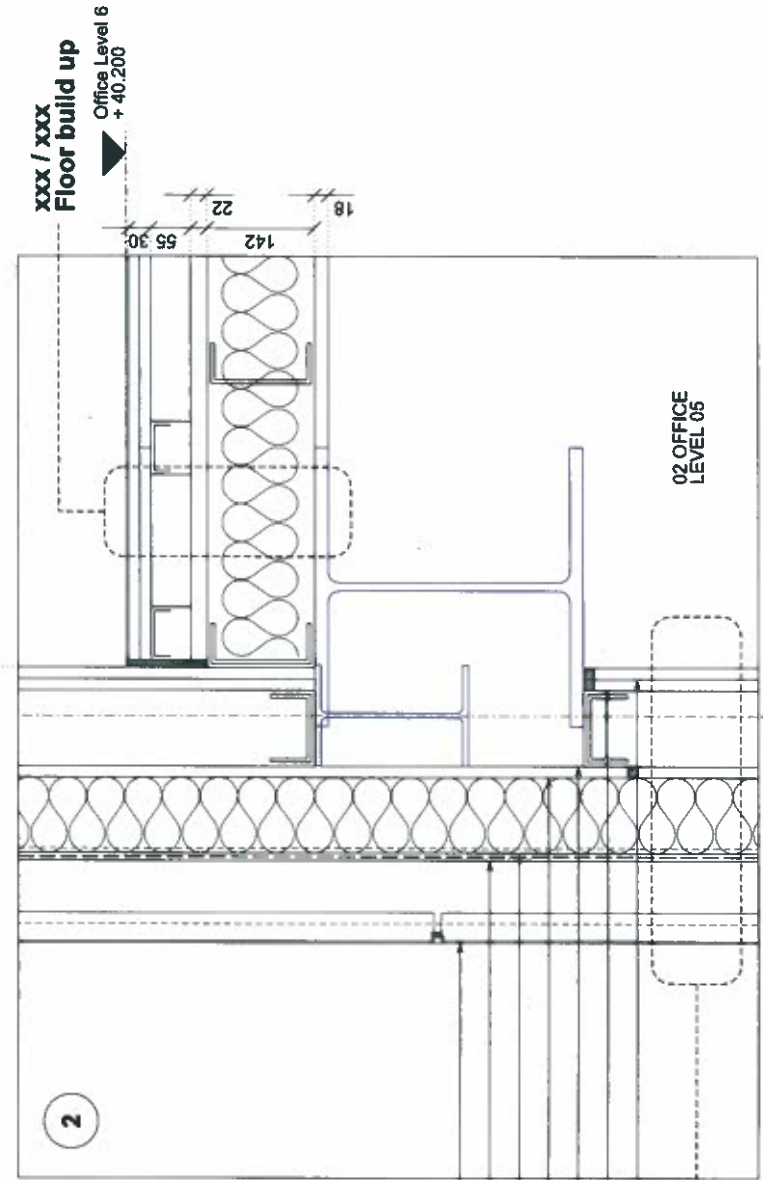
Project No. 1219

Drawing Number	Revision
1219_21_500	\
Scale @ A3	Scale @ A1
1 : 10	1 : 5
	Revision Date
	141217

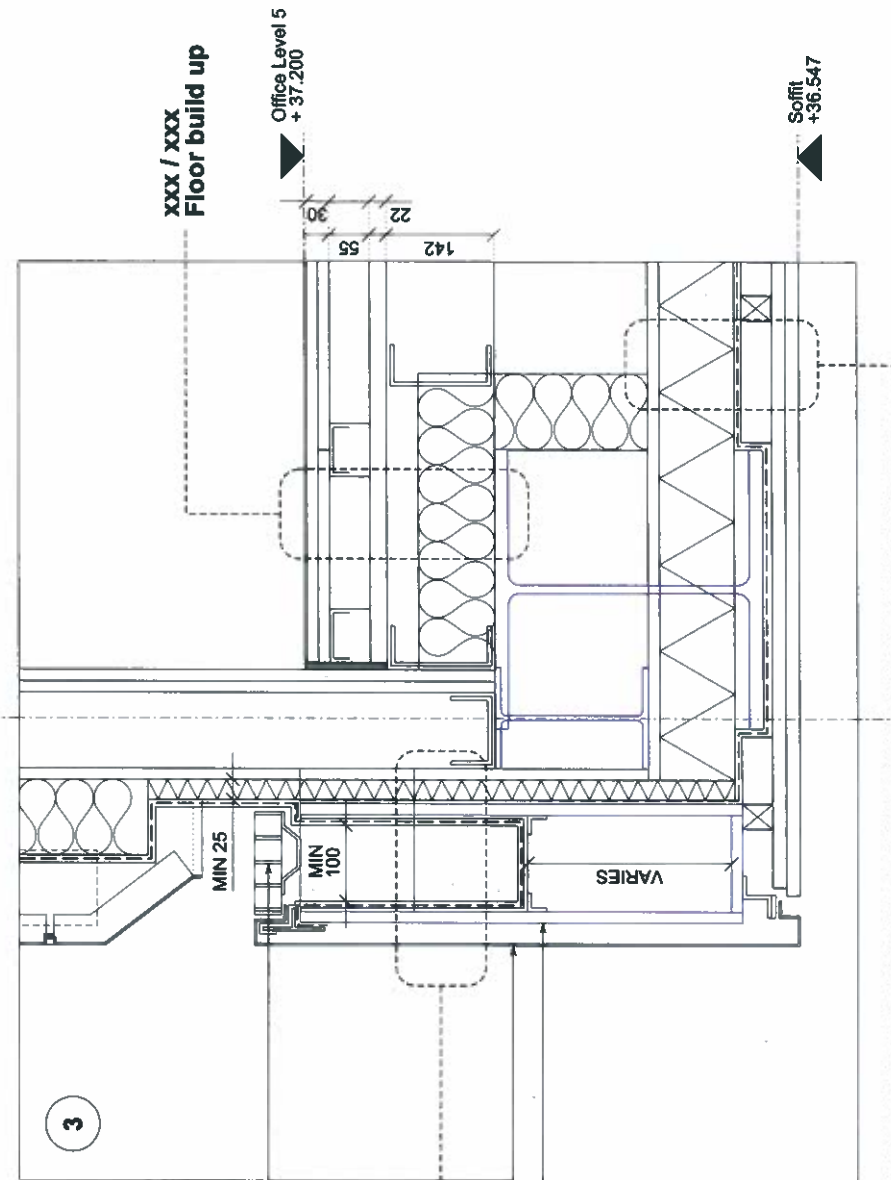
YY MM DD



H92 / 114 Weathering Steel Parapet Section
SFS infill walling between steel structure



H92 / 111 Weathering Steel Rainscreen Cladding
Weathering steel rainscreen cladding panel
EPDM membrane
Insulation
Cement particle board
SFS infill wall with deflection head
Cement particle board
Oriented strand board



H11 / 113 Weathering Steel Gutter
Galvanised metal grating
Weathering steel rainscreen cladding panel
Metal plate gutter

H20 / 151 Panellised Soffit

Revisions
1 141217 Planning Issue

By Chk
DC SE

By Chk

Notes

PLEASE NOTE: ALL STRUCTURAL STEELWORK IS SHOWN INDICATIVELY IN BLUE, AND IS BASED ON THESE DRAWINGS BY MICHAEL JACKSON CONSULTING.

1624-02-2011 A	DATED: MAR 12
1624-02-2011	DATED: OCT 12
1624-02-2012	DATED: OCT 12
1624-02-2013	DATED: OCT 12
1624-02-2014	DATED: OCT 12
1624-02-2015	DATED: OCT 12
1624-02-2016	DATED: OCT 12
1624-02-2017	DATED: OCT 12
1624-02-2018	DATED: OCT 12
1624-02-2019	DATED: OCT 12
1624-02-2020	DATED: OCT 12
1624-02-2021	DATED: OCT 12
1624-02-2022	DATED: OCT 12
1624-02-2023	DATED: OCT 12
1624-02-2024	DATED: OCT 12
1624-02-2025	DATED: OCT 12
1624-02-2026	DATED: OCT 12
1624-02-2027	DATED: OCT 12
1624-02-2028	DATED: OCT 12
1624-02-2029	DATED: OCT 12
1624-02-2030	DATED: OCT 12
1624-02-2031	DATED: OCT 12
1624-02-2032	DATED: OCT 12
1624-02-2033	DATED: OCT 12
1624-02-2034	DATED: OCT 12
1624-02-2035	DATED: OCT 12
1624-02-2036	DATED: OCT 12
1624-02-2037	DATED: OCT 12
1624-02-2038	DATED: OCT 12
1624-02-2039	DATED: OCT 12
1624-02-2040	DATED: OCT 12
1624-02-2041	DATED: OCT 12
1624-02-2042	DATED: OCT 12
1624-02-2043	DATED: OCT 12
1624-02-2044	DATED: OCT 12
1624-02-2045	DATED: OCT 12
1624-02-2046	DATED: OCT 12
1624-02-2047	DATED: OCT 12
1624-02-2048	DATED: OCT 12
1624-02-2049	DATED: OCT 12
1624-02-2050	DATED: OCT 12
1624-02-2051	DATED: OCT 12
1624-02-2052	DATED: OCT 12
1624-02-2053	DATED: OCT 12
1624-02-2054	DATED: OCT 12
1624-02-2055	DATED: OCT 12
1624-02-2056	DATED: OCT 12
1624-02-2057	DATED: OCT 12
1624-02-2058	DATED: OCT 12
1624-02-2059	DATED: OCT 12
1624-02-2060	DATED: OCT 12
1624-02-2061	DATED: OCT 12
1624-02-2062	DATED: OCT 12
1624-02-2063	DATED: OCT 12
1624-02-2064	DATED: OCT 12
1624-02-2065	DATED: OCT 12
1624-02-2066	DATED: OCT 12
1624-02-2067	DATED: OCT 12
1624-02-2068	DATED: OCT 12
1624-02-2069	DATED: OCT 12
1624-02-2070	DATED: OCT 12
1624-02-2071	DATED: OCT 12
1624-02-2072	DATED: OCT 12
1624-02-2073	DATED: OCT 12
1624-02-2074	DATED: OCT 12
1624-02-2075	DATED: OCT 12
1624-02-2076	DATED: OCT 12
1624-02-2077	DATED: OCT 12
1624-02-2078	DATED: OCT 12
1624-02-2079	DATED: OCT 12
1624-02-2080	DATED: OCT 12
1624-02-2081	DATED: OCT 12
1624-02-2082	DATED: OCT 12
1624-02-2083	DATED: OCT 12
1624-02-2084	DATED: OCT 12
1624-02-2085	DATED: OCT 12
1624-02-2086	DATED: OCT 12
1624-02-2087	DATED: OCT 12
1624-02-2088	DATED: OCT 12
1624-02-2089	DATED: OCT 12
1624-02-2090	DATED: OCT 12
1624-02-2091	DATED: OCT 12
1624-02-2092	DATED: OCT 12
1624-02-2093	DATED: OCT 12
1624-02-2094	DATED: OCT 12
1624-02-2095	DATED: OCT 12
1624-02-2096	DATED: OCT 12
1624-02-2097	DATED: OCT 12
1624-02-2098	DATED: OCT 12
1624-02-2099	DATED: OCT 12
1624-02-2100	DATED: OCT 12
1624-02-2101	DATED: OCT 12
1624-02-2102	DATED: OCT 12
1624-02-2103	DATED: OCT 12
1624-02-2104	DATED: OCT 12
1624-02-2105	DATED: OCT 12
1624-02-2106	DATED: OCT 12
1624-02-2107	DATED: OCT 12
1624-02-2108	DATED: OCT 12
1624-02-2109	DATED: OCT 12
1624-02-2110	DATED: OCT 12
1624-02-2111	DATED: OCT 12
1624-02-2112	DATED: OCT 12
1624-02-2113	DATED: OCT 12
1624-02-2114	DATED: OCT 12
1624-02-2115	DATED: OCT 12
1624-02-2116	DATED: OCT 12
1624-02-2117	DATED: OCT 12
1624-02-2118	DATED: OCT 12
1624-02-2119	DATED: OCT 12
1624-02-2120	DATED: OCT 12
1624-02-2121	DATED: OCT 12
1624-02-2122	DATED: OCT 12
1624-02-2123	DATED: OCT 12
1624-02-2124	DATED: OCT 12
1624-02-2125	DATED: OCT 12
1624-02-2126	DATED: OCT 12
1624-02-2127	DATED: OCT 12
1624-02-2128	DATED: OCT 12
1624-02-2129	DATED: OCT 12
1624-02-2130	DATED: OCT 12
1624-02-2131	DATED: OCT 12
1624-02-2132	DATED: OCT 12
1624-02-2133	DATED: OCT 12
1624-02-2134	DATED: OCT 12
1624-02-2135	DATED: OCT 12
1624-02-2136	DATED: OCT 12
1624-02-2137	DATED: OCT 12
1624-02-2138	DATED: OCT 12
1624-02-2139	DATED: OCT 12
1624-02-2140	DATED: OCT 12
1624-02-2141	DATED: OCT 12
1624-02-2142	DATED: OCT 12
1624-02-2143	DATED: OCT 12
1624-02-2144	DATED: OCT 12
1624-02-2145	DATED: OCT 12
1624-02-2146	DATED: OCT 12
1624-02-2147	DATED: OCT 12
1624-02-2148	DATED: OCT 12
1624-02-2149	DATED: OCT 12
1624-02-2150	DATED: OCT 12
1624-02-2151	DATED: OCT 12
1624-02-2152	DATED: OCT 12
1624-02-2153	DATED: OCT 12
1624-02-2154	DATED: OCT 12
1624-02-2155	DATED: OCT 12
1624-02-2156	DATED: OCT 12
1624-02-2157	DATED: OCT 12
1624-02-2158	DATED: OCT 12
1624-02-2159	DATED: OCT 12
1624-02-2160	DATED: OCT 12
1624-02-2161	DATED: OCT 12
1624-02-2162	DATED: OCT 12
1624-02-2163	DATED: OCT 12
1624-02-2164	DATED: OCT 12
1624-02-2165	DATED: OCT 12
1624-02-2166	DATED: OCT 12
1624-02-2167	DATED: OCT 12
1624-02-2168	DATED: OCT 12
1624-02-2169	DATED: OCT 12
1624-02-2170	DATED: OCT 12
1624-02-2171	DATED: OCT 12
1624-02-2172	DATED: OCT 12
1624-02-2173	DATED: OCT 12
1624-02-2174	DATED: OCT 12
1624-02-2175	DATED: OCT 12
1624-02-2176	DATED: OCT 12
1624-02-2177	DATED: OCT 12
1624-02-2178	DATED: OCT 12
1624-02-2179	DATED: OCT 12
1624-02-2180	DATED: OCT 12
1624-02-2181	DATED: OCT 12
1624-02-2182	DATED: OCT 12
1624-02-2183	DATED: OCT 12
1624-02-2184	DATED: OCT 12
1624-02-2185	DATED: OCT 12
1624-02-2186	DATED: OCT 12
1624-02-2187	DATED: OCT 12
1624-02-2188	DATED: OCT 12
1624-02-2189	DATED: OCT 12
1624-02-2190	DATED: OCT 12
1624-02-2191	DATED: OCT 12
1624-02-2192	DATED: OCT 12
1624-02-2193	DATED: OCT 12
1624-02-2194	DATED: OCT 12
1624-02-2195	DATED: OCT 12
1624-02-2196	DATED: OCT 12
1624-02-2197	DATED: OCT 12
1624-02-2198	DATED: OCT 12
1624-02-2199	DATED: OCT 12
1624-02-2200	DATED: OCT 12



Bennetts Associates Architects
1 Rawstorne Place London EC1V 7NL
T +44 (0)20 7520 3300 F +44 (0)20 7520 3333
E mail@bennettsassociates.com
For Bennetts Associates' electronic information base visit our website
www.bennettsassociates.com

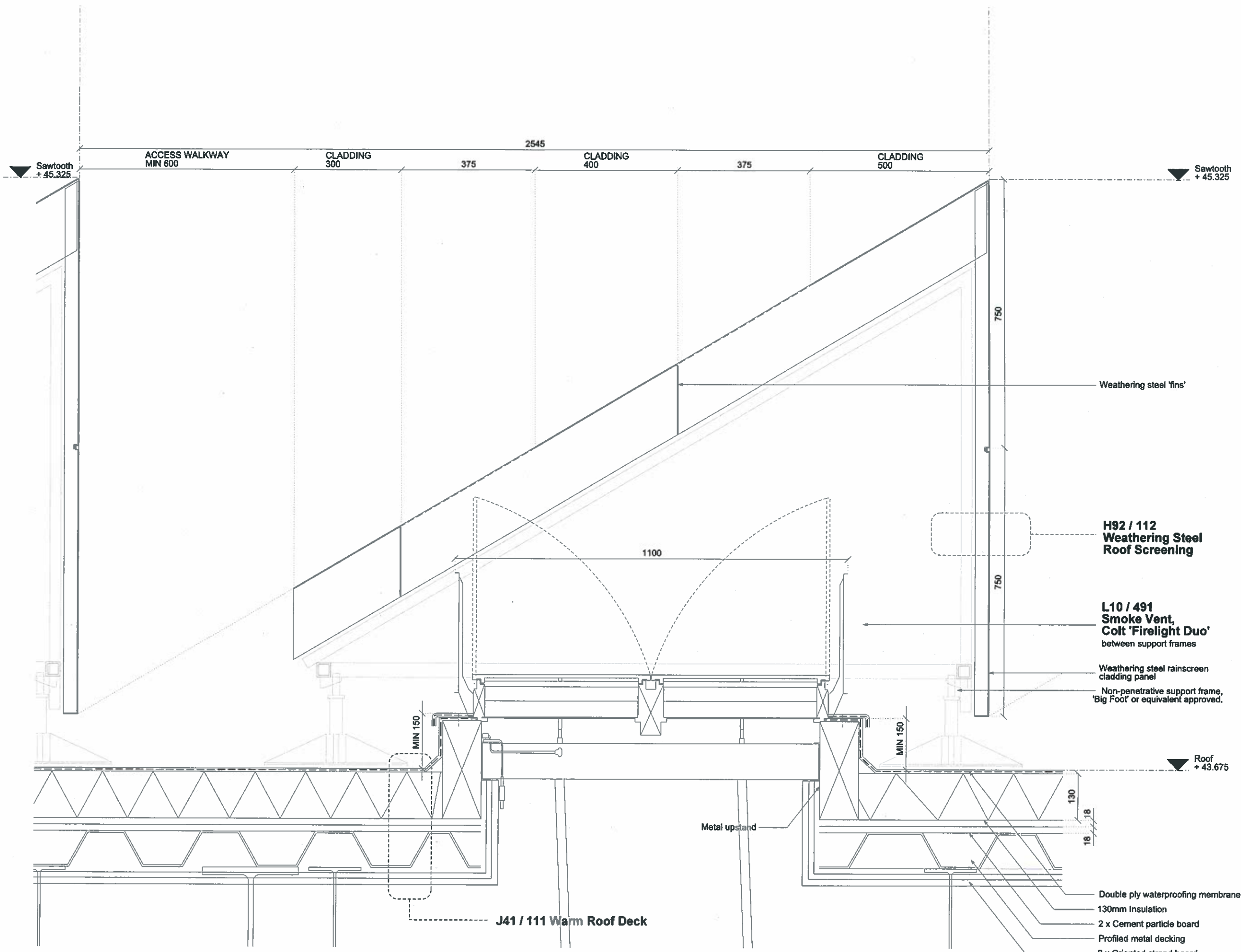
Project
Shaftesbury Theatre
The Theatre of Comedy Company

Project No. 1219

Drawing Title
Phase 3
Detail Section A-A
Rainscreen parapet + intermediate floor

Drawing Number
1219_21_502
Scale @ A3
1:10
Scale @ A1
1:5

Revision
Revision Date
141217
VV MM DD



Notes

PLEASE NOTE: ALL STRUCTURAL STEELWORK IS SHOWN INDICATIVELY IN BLUE, AND IS BASED ON THESE DRAWINGS BY MICHAEL JACKSON CONSULTING:

1824-03-201 A	DATED: MAR 12
1824-03-201	DATED: OCT 13
1824-03-252	DATED: OCT 13
1824-03-253	DATED: OCT 13
1824-03-254	DATED: OCT 13
1824-301 A	DATED: OCT 13
1824-03-302 A	DATED: DEC 13
1824-03-303 A	DATED: DEC 13
1824-03-304 A	DATED: DEC 13
1824-03-351 A	DATED: OCT 13
1824-401	DATED: OCT 13
1824-03-451 A	DATED: SEP 13
1824-03-452	DATED: SEP 13
1824-03-453 A	DATED: SEP 13
1824-03-454	DATED: SEP 13
1824-03-455 A	DATED: SEP 13
1824-03-456	DATED: SEP 13
1824-03-457 A	DATED: SEP 13
1824-03-458	DATED: SEP 13
1824-031 A	DATED: NOV 13
1824-03-501	DATED: APRIL 13

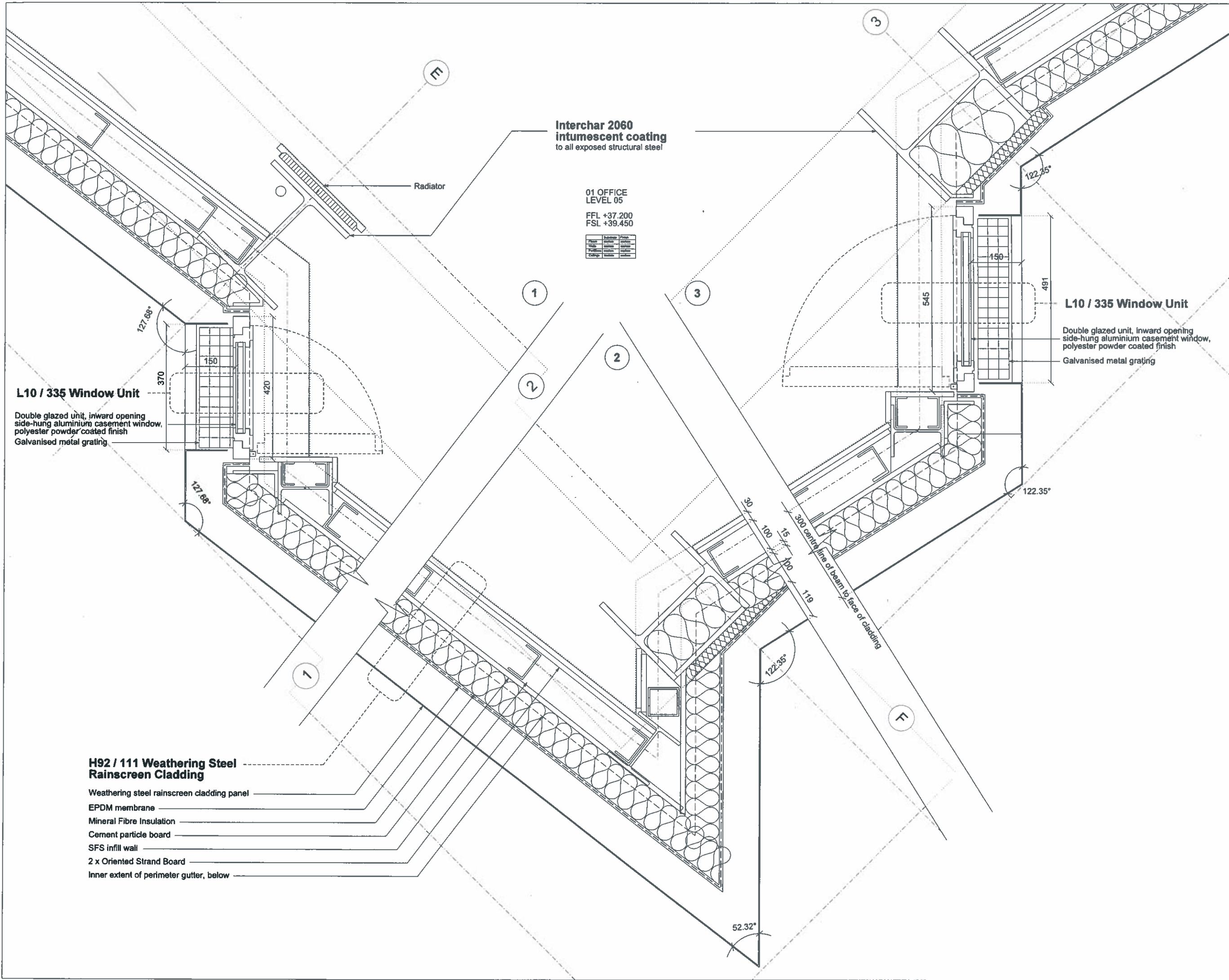


Bennetts Associates Architects
 1 Rawstorne Place London EC1V 7NL
 T +44 (0)20 7520 3300 F +44 (0)20 7520 3333
 E mail@bennettsassociates.com

Project **Shaftesbury Theatre**
 The Theatre of Comedy Company
 Project No. 1219

Drawing Title
Phase 3
Section Detail D-D
 Roof cladding + access hatch

Drawing Number	Revision
1219_21_504	\
Scale @ A3	Scale @A1
1 : 10	1 : 5
	Revision Date
	141217
	YY MM DD



**Interchar 2060
intumescent coating**
to all exposed structural steel

01 OFFICE
LEVEL 05

FFL +37.200
FSL +39.450

Item	Quantity	Unit	Price
Steel			
Paint			
Grating			
Other			

Radiator

L10 / 335 Window Unit

Double glazed unit, inward opening side-hung aluminium casement window, polyester powder coated finish
Galvanised metal grating

L10 / 335 Window Unit

Double glazed unit, inward opening side-hung aluminium casement window, polyester powder coated finish
Galvanised metal grating

H92 / 111 Weathering Steel Rainscreen Cladding

- Weathering steel rainscreen cladding panel
- EPDM membrane
- Mineral Fibre Insulation
- Cement particle board
- SFS infill wall
- 2 x Oriented Strand Board
- Inner extent of perimeter gutter, below

Revisions	By	Chk
1 141217 Planning Issue	DC	SE

Notes

PLEASE NOTE: ALL STRUCTURAL STEELWORK IS SHOWN INDICATIVELY IN BLUE, AND IS BASED ON THESE DRAWINGS BY MICHAEL JACKSON CONSULTING.

NO	DATE	DESCRIPTION
1024-03-301 A	DATED: MAR 12	
1024-03-301	DATED: OCT 13	
1024-03-302	DATED: OCT 13	
1024-03-303	DATED: OCT 13	
1024-03-304	DATED: OCT 13	
1024-03-305 A	DATED: OCT 13	
1024-03-306 A	DATED: DEC 13	
1024-03-307 A	DATED: DEC 13	
1024-03-308 A	DATED: DEC 13	
1024-03-309 A	DATED: DEC 13	
1024-03-310 A	DATED: OCT 12	
1024-03-311 A	DATED: OCT 12	
1024-03-312 A	DATED: OCT 12	
1024-03-313 A	DATED: OCT 12	
1024-03-314 A	DATED: OCT 12	
1024-03-315 A	DATED: OCT 12	
1024-03-316 A	DATED: OCT 12	
1024-03-317 A	DATED: OCT 12	
1024-03-318 A	DATED: OCT 12	
1024-03-319 A	DATED: OCT 12	
1024-03-320 A	DATED: OCT 12	
1024-03-321 A	DATED: OCT 12	
1024-03-322 A	DATED: OCT 12	
1024-03-323 A	DATED: OCT 12	
1024-03-324 A	DATED: OCT 12	
1024-03-325 A	DATED: OCT 12	
1024-03-326 A	DATED: OCT 12	
1024-03-327 A	DATED: OCT 12	
1024-03-328 A	DATED: OCT 12	
1024-03-329 A	DATED: OCT 12	
1024-03-330 A	DATED: OCT 12	
1024-03-331 A	DATED: OCT 12	
1024-03-332 A	DATED: OCT 12	
1024-03-333 A	DATED: OCT 12	
1024-03-334 A	DATED: OCT 12	
1024-03-335 A	DATED: OCT 12	
1024-03-336 A	DATED: OCT 12	
1024-03-337 A	DATED: OCT 12	
1024-03-338 A	DATED: OCT 12	
1024-03-339 A	DATED: OCT 12	
1024-03-340 A	DATED: OCT 12	
1024-03-341 A	DATED: OCT 12	
1024-03-342 A	DATED: OCT 12	
1024-03-343 A	DATED: OCT 12	
1024-03-344 A	DATED: OCT 12	
1024-03-345 A	DATED: OCT 12	
1024-03-346 A	DATED: OCT 12	
1024-03-347 A	DATED: OCT 12	
1024-03-348 A	DATED: OCT 12	
1024-03-349 A	DATED: OCT 12	
1024-03-350 A	DATED: OCT 12	
1024-03-351 A	DATED: OCT 12	
1024-03-352 A	DATED: OCT 12	
1024-03-353 A	DATED: OCT 12	
1024-03-354 A	DATED: OCT 12	
1024-03-355 A	DATED: OCT 12	
1024-03-356 A	DATED: OCT 12	
1024-03-357 A	DATED: OCT 12	
1024-03-358 A	DATED: OCT 12	
1024-03-359 A	DATED: OCT 12	
1024-03-360 A	DATED: OCT 12	
1024-03-361 A	DATED: OCT 12	
1024-03-362 A	DATED: OCT 12	
1024-03-363 A	DATED: OCT 12	
1024-03-364 A	DATED: OCT 12	
1024-03-365 A	DATED: OCT 12	
1024-03-366 A	DATED: OCT 12	
1024-03-367 A	DATED: OCT 12	
1024-03-368 A	DATED: OCT 12	
1024-03-369 A	DATED: OCT 12	
1024-03-370 A	DATED: OCT 12	
1024-03-371 A	DATED: OCT 12	
1024-03-372 A	DATED: OCT 12	
1024-03-373 A	DATED: OCT 12	
1024-03-374 A	DATED: OCT 12	
1024-03-375 A	DATED: OCT 12	
1024-03-376 A	DATED: OCT 12	
1024-03-377 A	DATED: OCT 12	
1024-03-378 A	DATED: OCT 12	
1024-03-379 A	DATED: OCT 12	
1024-03-380 A	DATED: OCT 12	
1024-03-381 A	DATED: OCT 12	
1024-03-382 A	DATED: OCT 12	
1024-03-383 A	DATED: OCT 12	
1024-03-384 A	DATED: OCT 12	
1024-03-385 A	DATED: OCT 12	
1024-03-386 A	DATED: OCT 12	
1024-03-387 A	DATED: OCT 12	
1024-03-388 A	DATED: OCT 12	
1024-03-389 A	DATED: OCT 12	
1024-03-390 A	DATED: OCT 12	
1024-03-391 A	DATED: OCT 12	
1024-03-392 A	DATED: OCT 12	
1024-03-393 A	DATED: OCT 12	
1024-03-394 A	DATED: OCT 12	
1024-03-395 A	DATED: OCT 12	
1024-03-396 A	DATED: OCT 12	
1024-03-397 A	DATED: OCT 12	
1024-03-398 A	DATED: OCT 12	
1024-03-399 A	DATED: OCT 12	
1024-03-400 A	DATED: OCT 12	
1024-03-401 A	DATED: OCT 12	
1024-03-402 A	DATED: OCT 12	
1024-03-403 A	DATED: OCT 12	
1024-03-404 A	DATED: OCT 12	
1024-03-405 A	DATED: OCT 12	
1024-03-406 A	DATED: OCT 12	
1024-03-407 A	DATED: OCT 12	
1024-03-408 A	DATED: OCT 12	
1024-03-409 A	DATED: OCT 12	
1024-03-410 A	DATED: OCT 12	
1024-03-411 A	DATED: OCT 12	
1024-03-412 A	DATED: OCT 12	
1024-03-413 A	DATED: OCT 12	
1024-03-414 A	DATED: OCT 12	
1024-03-415 A	DATED: OCT 12	
1024-03-416 A	DATED: OCT 12	
1024-03-417 A	DATED: OCT 12	
1024-03-418 A	DATED: OCT 12	
1024-03-419 A	DATED: OCT 12	
1024-03-420 A	DATED: OCT 12	
1024-03-421 A	DATED: OCT 12	
1024-03-422 A	DATED: OCT 12	
1024-03-423 A	DATED: OCT 12	
1024-03-424 A	DATED: OCT 12	
1024-03-425 A	DATED: OCT 12	
1024-03-426 A	DATED: OCT 12	
1024-03-427 A	DATED: OCT 12	
1024-03-428 A	DATED: OCT 12	
1024-03-429 A	DATED: OCT 12	
1024-03-430 A	DATED: OCT 12	
1024-03-431 A	DATED: OCT 12	
1024-03-432 A	DATED: OCT 12	
1024-03-433 A	DATED: OCT 12	
1024-03-434 A	DATED: OCT 12	
1024-03-435 A	DATED: OCT 12	
1024-03-436 A	DATED: OCT 12	
1024-03-437 A	DATED: OCT 12	
1024-03-438 A	DATED: OCT 12	
1024-03-439 A	DATED: OCT 12	
1024-03-440 A	DATED: OCT 12	
1024-03-441 A	DATED: OCT 12	
1024-03-442 A	DATED: OCT 12	
1024-03-443 A	DATED: OCT 12	
1024-03-444 A	DATED: OCT 12	
1024-03-445 A	DATED: OCT 12	
1024-03-446 A	DATED: OCT 12	
1024-03-447 A	DATED: OCT 12	
1024-03-448 A	DATED: OCT 12	
1024-03-449 A	DATED: OCT 12	
1024-03-450 A	DATED: OCT 12	
1024-03-451 A	DATED: OCT 12	
1024-03-452 A	DATED: OCT 12	
1024-03-453 A	DATED: OCT 12	
1024-03-454 A	DATED: OCT 12	
1024-03-455 A	DATED: OCT 12	
1024-03-456 A	DATED: OCT 12	
1024-03-457 A	DATED: OCT 12	
1024-03-458 A	DATED: OCT 12	
1024-03-459 A	DATED: OCT 12	
1024-03-460 A	DATED: OCT 12	
1024-03-461 A	DATED: OCT 12	
1024-03-462 A	DATED: OCT 12	
1024-03-463 A	DATED: OCT 12	
1024-03-464 A	DATED: OCT 12	
1024-03-465 A	DATED: OCT 12	
1024-03-466 A	DATED: OCT 12	
1024-03-467 A	DATED: OCT 12	
1024-03-468 A	DATED: OCT 12	
1024-03-469 A	DATED: OCT 12	
1024-03-470 A	DATED: OCT 12	
1024-03-471 A	DATED: OCT 12	
1024-03-472 A	DATED: OCT 12	
1024-03-473 A	DATED: OCT 12	
1024-03-474 A	DATED: OCT 12	
1024-03-475 A	DATED: OCT 12	
1024-03-476 A	DATED: OCT 12	
1024-03-477 A	DATED: OCT 12	
1024-03-478 A	DATED: OCT 12	
1024-03-479 A	DATED: OCT 12	
1024-03-480 A	DATED: OCT 12	
1024-03-481 A	DATED: OCT 12	
1024-03-482 A	DATED: OCT 12	
1024-03-483 A	DATED: OCT 12	
1024-03-484 A	DATED: OCT 12	
1024-03-485 A	DATED: OCT 12	
1024-03-486 A	DATED: OCT 12	
1024-03-487 A	DATED: OCT 12	
1024-03-488 A	DATED: OCT 12	
1024-03-489 A	DATED: OCT 12	
1024-03-490 A	DATED: OCT 12	
1024-03-491 A	DATED: OCT 12	
1024-03-492 A	DATED: OCT 12	
1024-03-493 A	DATED: OCT 12	
1024-03-494 A	DATED: OCT 12	
1024-03-495 A	DATED: OCT 12	
1024-03-496 A	DATED: OCT 12	
1024-03-497 A	DATED: OCT 12	
1024-03-498 A	DATED: OCT 12	
1024-03-499 A	DATED: OCT 12	
1024-03-500 A	DATED: OCT 12	



Bennetts Associates Architects

1 Rawstorne Place London EC1V 7NL
 T +44 (0)20 7520 3300 F +44 (0)20 7520 3333
 E mail@bennettsassociates.com
 For Bennetts Associates' electronic information usage disclaimer -
 www.bennettsassociates.com/forms/ipr-disclaimer/

Project **Shaftesbury Theatre**
 Project No. 1219
 Drawing Title
Phase 3
Plan Detail
Rainscreen cladding + windows

Drawing Number	Revision	
1219_ 21_ 505	1	
Scale @ A3	Scale @ A1	Revision Date
1 : 10	1 : 5	141217
		YY MM DD