

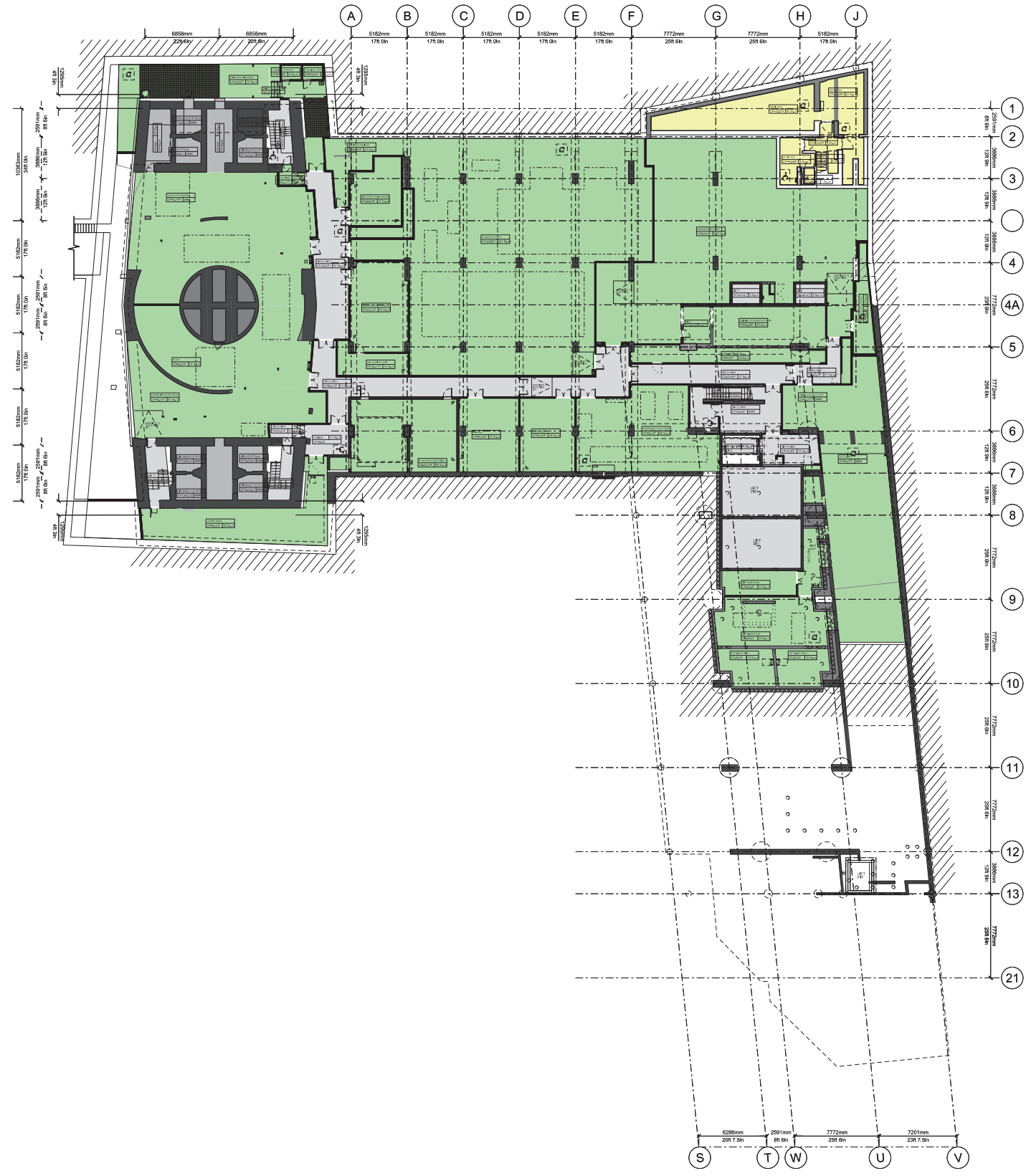
NOTES
 DO NOT SCALE FROM THIS DRAWING.
 CONTRACTOR TO CHECK ALL DIMENSIONS ON SITE.
 ANY DISCREPANCIES TO BE REPORTED TO THE ARCHITECT IMMEDIATELY.
 THE SURVEY INFORMATION CONTAINED IN THIS DRAWING WAS PROVIDED BY PLOWMAN CRAVEN SURVEY DRAWINGS DEC 2011 - OCT 2012.
 COPYRIGHT RICK MATHER ARCHITECTS LLP ©

AREA KEY

RESIDENTIAL	[Light Blue Box]
RETAIL	[Yellow Box]
PLANT	[Green Box]
CIRCULATION	[Light Grey Box]
CAR PARK	[Light Blue Box]
BACK OF HOUSE	[Dark Grey Box]
OFFICE	[Brown Box]
RESIDENTIAL AMENITY	[Purple Box]

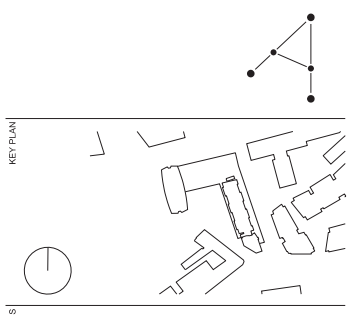
KEY

DEMOLITION	[Hatched Box]
EXISTING STRUCTURE	[Black Box]
PARTITION	[Dark Grey Box]
PROPOSED STRUCTURE	[Hatched Box]



REVISIONS

REV	DATE	DESCRIPTION
PL2	15.09.14	NON-MATERIAL AMENDMENTS / LISTED BUILDING
PL1	01.04.13	PLANNING ISSUE



STATUS
PLANNING

RICK MATHER ARCHITECTS ©
 123 Camden High Street London NW1 7JR
 T: 020 7284 1727 F: 020 7267 7626
 info@rickmather.com www.rickmather.com

JOB
Centre Point
 101-103 New Oxford Street
 London, WC1A 1DD **APP 1A**

TITLE
PROPOSED FLOOR PLAN
 SUB-BASEMENT
 AMALGAMATED DRAWINGS

DRAWN	CMcC	JOB #	552	DRG #	19400-CPA	REV	PL2		
CHECKED	GM	SCALE	1:250	SIZE	A1	DATE	APR 13	REV DATE	15.09.14