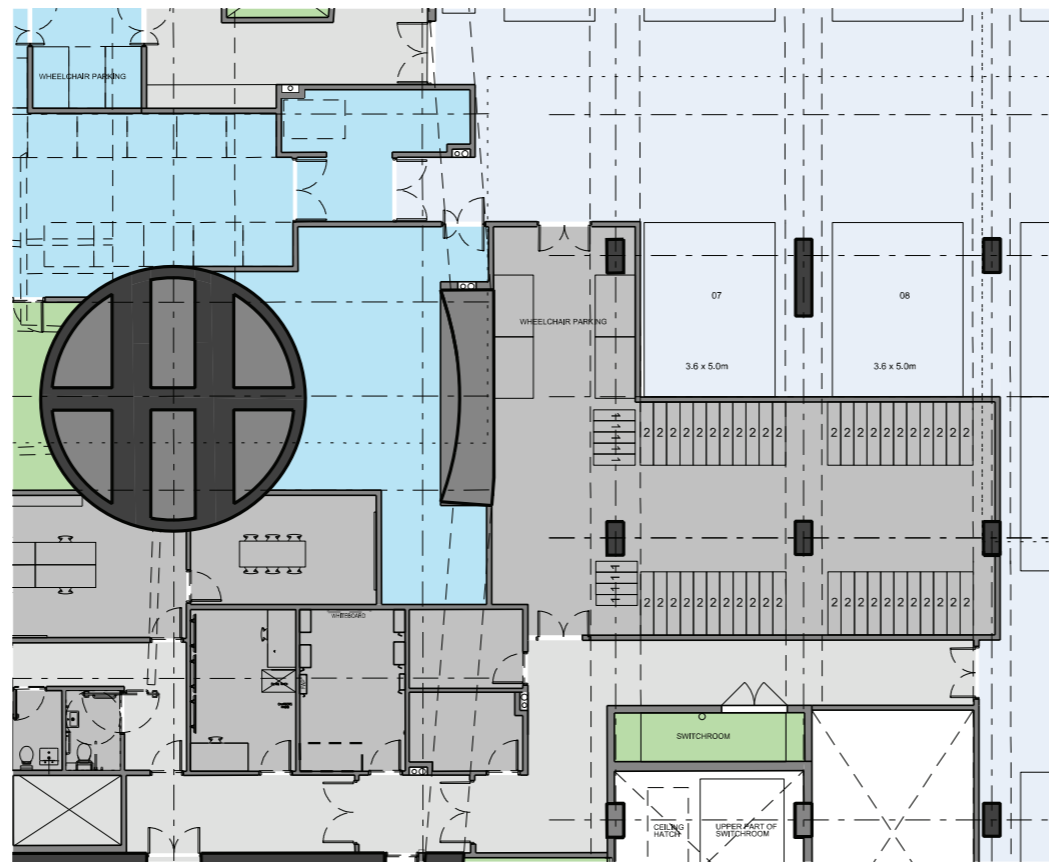
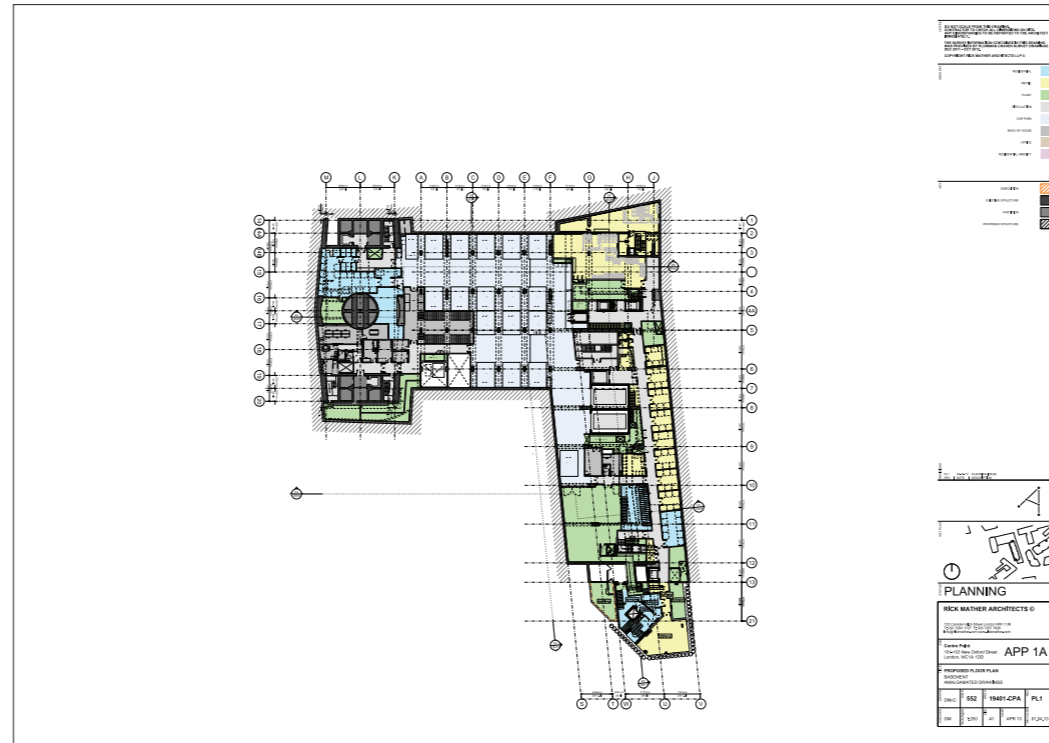


2.3.5 AMENDMENT 20: CPL / CPT

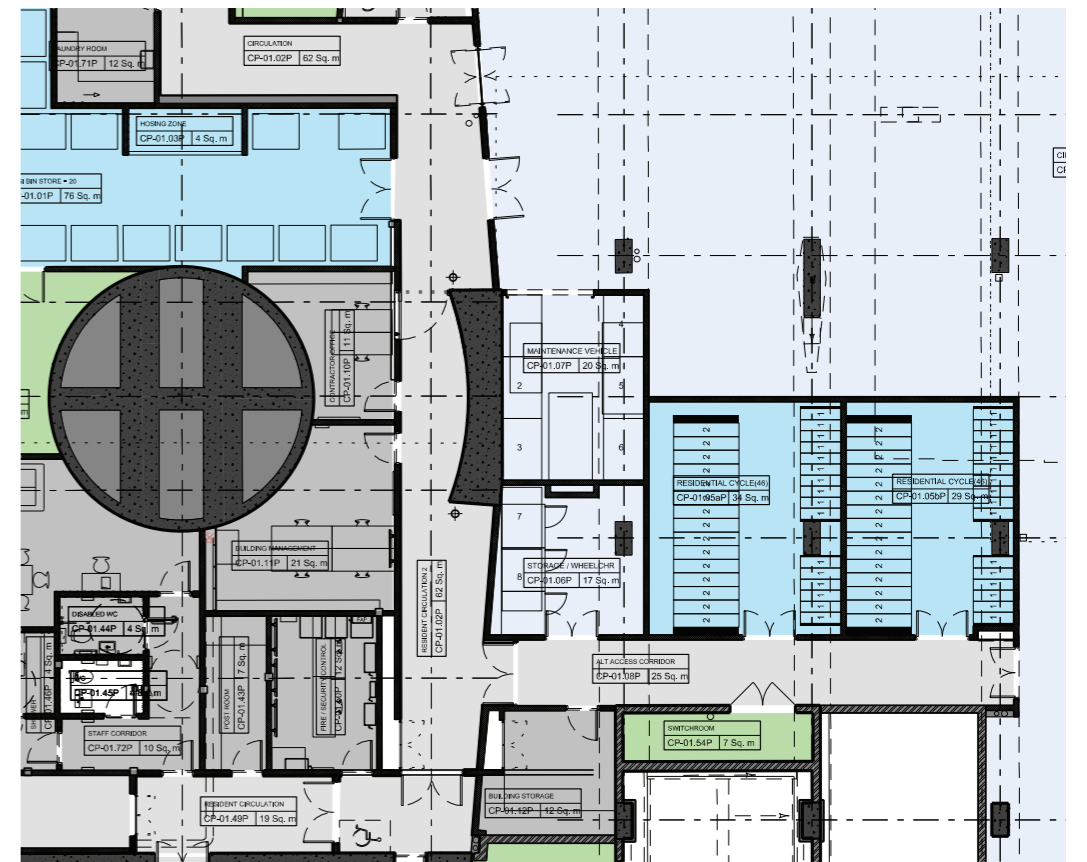
Relocation of access corridor to CPL / CPT (adjacent gridline K/16 - 20)

The basement level -01 contained both cycle parking and wheelchair storage adjacent to the car parking area. However, this meant that there was no direct access link between the North and South areas of the tower at this level without either circulating through the car park or the wheelchair storage area.

By reconfiguring the general room layouts in this area it is possible to provide an independent link corridor along gridline K. This ensures a more satisfactory means of circulation and escape in the basement whilst improving security for the wheelchair storage area as it would be contained within a separate, secure compartment.



APPROVED PLAN
Drawing: 19401-CPA Basement Floor Plan



AMENDED PLAN
Drawing: 19401-CPA Basement Floor Plan