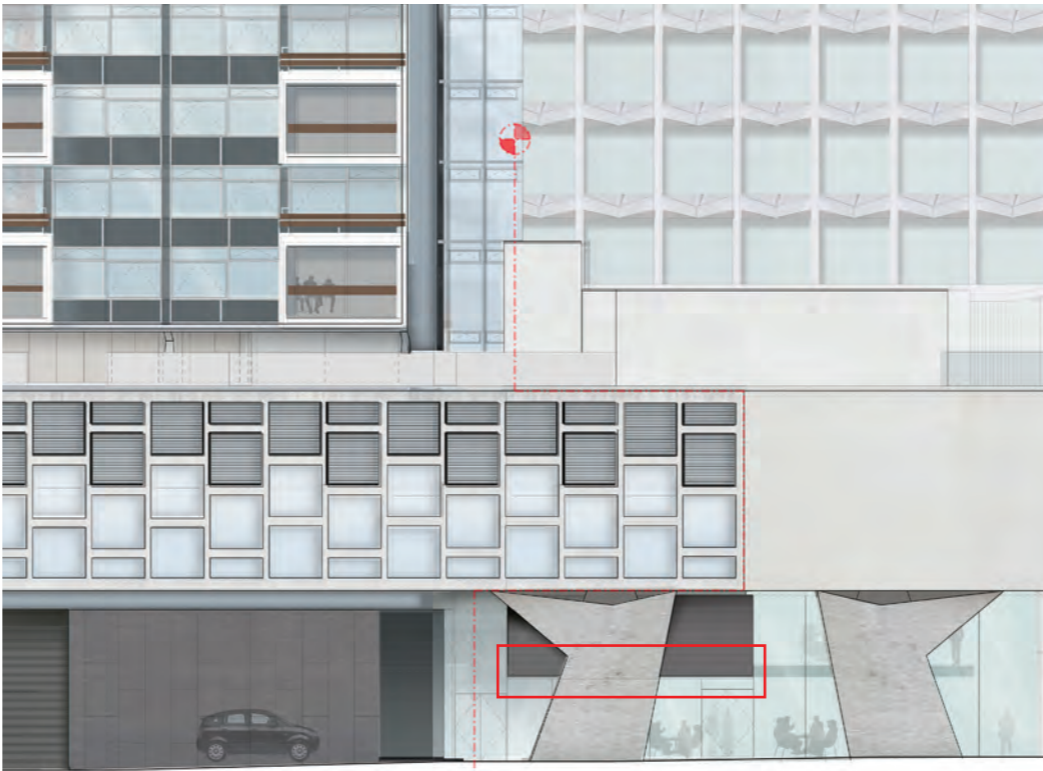
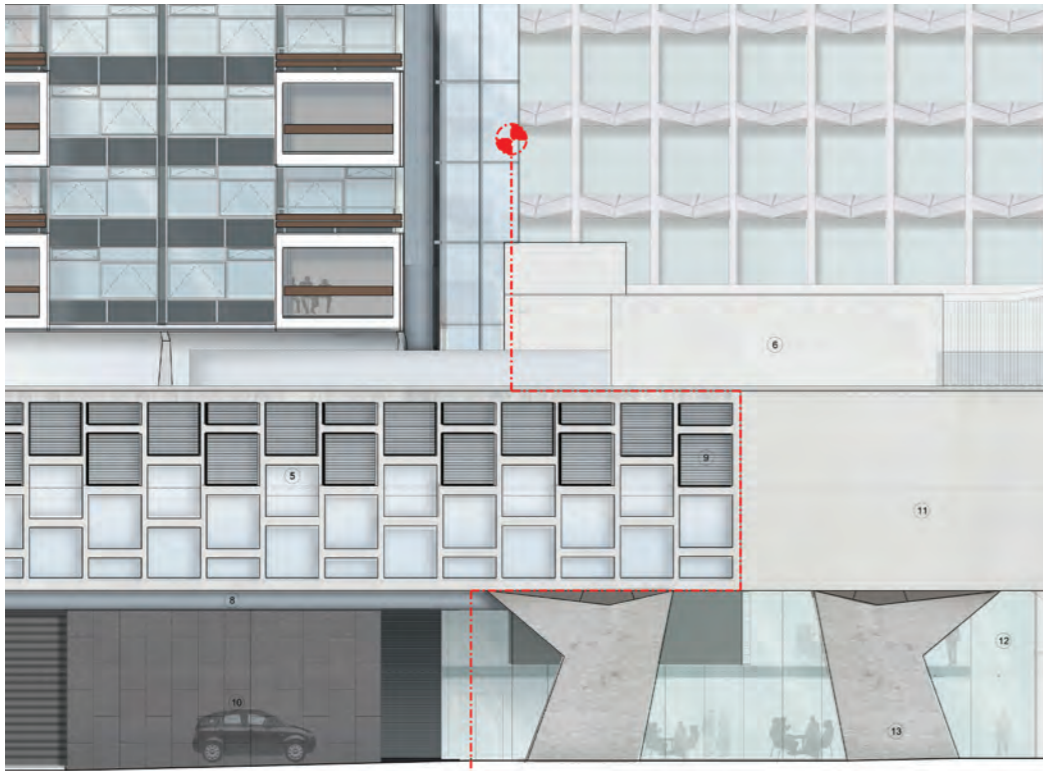


**2.3.2 AMENDMENT 14: CPL**

**Louvres extended to underside of level 00M slab**

Following stage E design development, there was a requirement to provide a structural movement joint in the East facade running along the underside of the mezzanine slab. It was felt that this joint in the facade would be visually unsightly, breaking the continuous facade plane, particularly when viewed from pedestrian level. Therefore, in order to conceal this, it is proposed to extend the louvres down by approximately 350mm to the underside of the existing mezzanine slab. The joint is then concealed within the louvre / glass junction.



APPROVED ELEVATION  
Drawing: 19556-CPA East Elevation

AMENDED ELEVATION  
Drawing: 19556-CPA East Elevation

